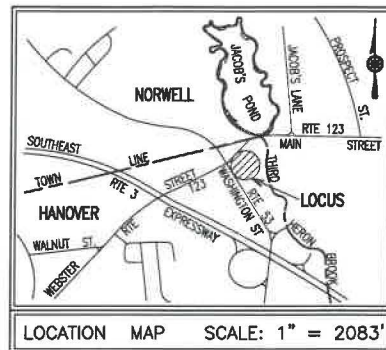
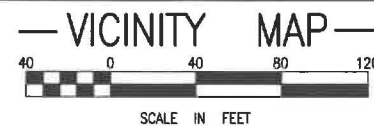
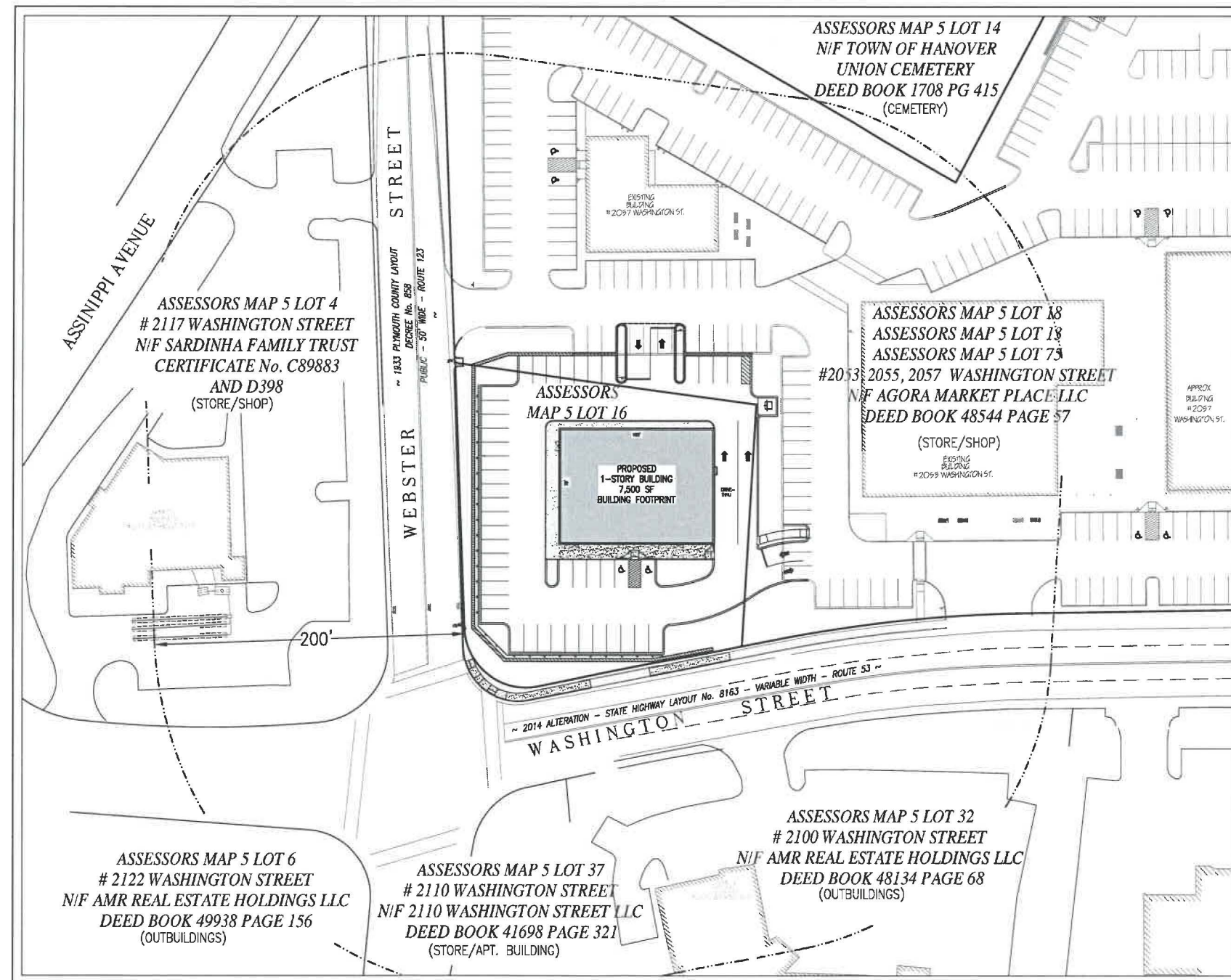


2053, 2055, 2057 & 2103 WASHINGTON STREET
(ASSESSORS MAP 5 - LOTS 13, 16, 18, 75)
HANOVER, MASSACHUSETTS
OCTOBER 16, 2023

TOWN CLERK



INDEX	
<u>SHEET</u>	<u>DESCRIPTION</u>
C1.1	COVER AND INDEX
C2.1	GENERAL NOTES / LEGEND
C3.1	EXISTING CONDITIONS PLAN
C4.1	EROSION CONTROL AND DEMOLITION PLAN
C5.1	ZONING PLAN
C5.2	SITE LAYOUT PLAN
C6.1	GRADING AND DRAINAGE PLAN
C7.1	UTILITY PLAN
C8.1	LANDSCAPE PLAN
C9.1	CONSTRUCTION DETAILS
C9.2	CONSTRUCTION DETAILS
C9.3	CONSTRUCTION DETAILS



ARCHITECT:
STUDIO TROIKA
15 CHANNEL CENTER STREET, SUITE 104
BOSTON, MA 02210
P: 857-991-1021

Merrill Corporation

LEGEND

EXISTING	DESCRIPTION	PROPOSED
	1' CONTOUR	
	SPOT ELEVATION	
	PROPERTY LINE	
	EDGE OF PAVEMENT	
	VERTICAL GRANITE CURB	
	SLOPE GRANITE CURB	
	CAPE COD BERM	
	VERTICAL BITUMINOUS CURB	
	VERTICAL CONCRETE CURB	
	EDGE OF GRAVEL	
	BRICK WALKWAY	
	RETAINING WALL	
	WATER LINE	
	GAS LINE	
	TELEPHONE & CABLE	
	ELECTRIC & TELEPHONE CABLE	
	ELECTRIC SERVICE	
	UNDERGROUND ELECTRIC SERVICE	
	OVERHEAD WIRE	
	OVERHEAD ELECTRIC WIRE	
	COMMUNICATIONS LINE	
	UNDERGROUND TELECOM	
	ROOF DRAIN LINE	
	SEWER LINE	
	DRAIN LINE	
	STONE WALL	
	FENCE	
	GUARDRAIL	
	100YR FEMA FLOOD PLAIN	
	100 FT WETLAND BUFFER	
	50 FT WETLAND BUFFER	
	WETLAND LINE	
	TOP OF BANK	
	100 FT RIVERFRONT AREA	
	200 FT RIVERFRONT AREA	
	EROSION CONTROL BARRIER	
	CONCRETE PAD	
	CONCRETE RETAINING WALL	
	EDGE OF GRAVEL	
	DETECTABLE MAT	
	BRICK WALKWAY	
	STONE RETAINING WALL	

UTILITIES - WATER

UTILITIES - GAS

UTILITIES - ELECTRIC

UTILITIES - SEWER

UTILITIES - DRAINAGE

LANDSCAPING

TRAFFIC MARKINGS

TOP OF BANK

100 FT RIVERFRONT AREA

200 FT RIVERFRONT AREA

CONCRETE PAD

CONCRETE RETAINING WALL

EDGE OF GRAVEL

DETECTABLE MAT

BRICK WALKWAY

STONE RETAINING WALL

CONCRETE PAD

CONC. RET. WALL

EDGE OF GRAVEL

DETECTABLE MAT

BRICK WALKWAY

STONE RET. WALL

CONCRETE PAD

CONC. RET. WALL

EDGE OF GRAVEL

DETECTABLE MAT

BRICK WALKWAY

STONE RET. WALL

CONCRETE PAD

CONC. RET. WALL

EDGE OF GRAVEL

DETECTABLE MAT

BRICK WALKWAY

STONE RET. WALL

CONCRETE PAD

CONC. RET. WALL

EDGE OF GRAVEL

DETECTABLE MAT

BRICK WALKWAY

STONE RET. WALL

CONCRETE PAD

CONC. RET. WALL

EDGE OF GRAVEL

DETECTABLE MAT

BRICK WALKWAY

STONE RET. WALL

CONCRETE PAD

CONC. RET. WALL

EDGE OF GRAVEL

DETECTABLE MAT

BRICK WALKWAY

STONE RET. WALL

CONCRETE PAD

CONC. RET. WALL

EDGE OF GRAVEL

DETECTABLE MAT

BRICK WALKWAY

STONE RET. WALL

CONCRETE PAD

CONC. RET. WALL

EDGE OF GRAVEL

DETECTABLE MAT

BRICK WALKWAY

STONE RET. WALL

CONCRETE PAD

CONC. RET. WALL

EDGE OF GRAVEL

DETECTABLE MAT

BRICK WALKWAY

STONE RET. WALL

CONCRETE PAD

CONC. RET. WALL

EDGE OF GRAVEL

DETECTABLE MAT

BRICK WALKWAY

STONE RET. WALL

CONCRETE PAD

CONC. RET. WALL

EDGE OF GRAVEL

DETECTABLE MAT

BRICK WALKWAY

STONE RET. WALL

CONCRETE PAD

CONC. RET. WALL

EDGE OF GRAVEL

DETECTABLE MAT

BRICK WALKWAY

STONE RET. WALL

CONCRETE PAD

CONC. RET. WALL

EDGE OF GRAVEL

DETECTABLE MAT

BRICK WALKWAY

STONE RET. WALL

CONCRETE PAD

CONC. RET. WALL

EDGE OF GRAVEL

DETECTABLE MAT

BRICK WALKWAY

STONE RET. WALL

CONCRETE PAD

CONC. RET. WALL

EDGE OF GRAVEL

DETECTABLE MAT

BRICK WALKWAY

STONE RET. WALL

CONCRETE PAD

CONC. RET. WALL

EDGE OF GRAVEL

DETECTABLE MAT

BRICK WALKWAY

STONE RET. WALL

CONCRETE PAD

CONC. RET. WALL

EDGE OF GRAVEL

DETECTABLE MAT

BRICK WALKWAY

STONE RET. WALL

CONCRETE PAD

CONC. RET. WALL

EDGE OF GRAVEL

DETECTABLE MAT

BRICK WALKWAY

STONE RET. WALL

CONCRETE PAD

CONC. RET. WALL

EDGE OF GRAVEL

DETECTABLE MAT

BRICK WALKWAY

STONE RET. WALL

CONCRETE PAD

CONC. RET. WALL

EDGE OF GRAVEL

DETECTABLE MAT

BRICK WALKWAY

STONE RET. WALL

CONCRETE PAD

CONC. RET. WALL

EDGE OF GRAVEL

DETECTABLE MAT

BRICK WALKWAY

STONE RET. WALL

CONCRETE PAD

CONC. RET. WALL

EDGE OF GRAVEL

DETECTABLE MAT

BRICK WALKWAY

STONE RET. WALL

CONCRETE PAD

CONC. RET. WALL

EDGE OF GRAVEL

DETECTABLE MAT

BRICK WALKWAY

STONE RET. WALL

CONCRETE PAD

CONC. RET. WALL

EDGE OF GRAVEL

DETECTABLE MAT

BRICK WALKWAY

STONE RET. WALL

CONCRETE PAD

CONC. RET. WALL

EDGE OF GRAVEL

DETECTABLE MAT

BRICK WALKWAY

STONE RET. WALL

CONCRETE PAD

CONC. RET. WALL

EDGE OF GRAVEL

DETECTABLE MAT

BRICK WALKWAY

STONE RET. WALL

CONCRETE PAD

CONC. RET. WALL

EDGE OF GRAVEL

DETECTABLE MAT

BRICK WALKWAY

STONE RET. WALL

CONCRETE PAD

CONC. RET. WALL

EDGE OF GRAVEL

DETECTABLE MAT

BRICK WALKWAY

STONE RET. WALL

CONCRETE PAD

CONC. RET. WALL

EDGE OF GRAVEL

DETECTABLE MAT

BRICK WALKWAY

STONE RET. WALL

CONCRETE PAD

CONC. RET. WALL

EDGE OF GRAVEL

DETECTABLE MAT

BRICK WALKWAY

STONE RET. WALL

CONCRETE PAD

CONC. RET. WALL

EDGE OF GRAVEL

DETECTABLE MAT

BRICK WALKWAY

STONE RET. WALL

CONCRETE PAD

CONC. RET. WALL

EDGE OF GRAVEL

DETECTABLE MAT

BRICK WALKWAY

STONE RET. WALL

CONCRETE PAD

CONC. RET. WALL

EDGE OF GRAVEL

DETECTABLE MAT

BRICK WALKWAY

STONE RET. WALL

CONCRETE PAD

CONC. RET. WALL

EDGE OF GRAVEL

DETECTABLE MAT

BRICK WALKWAY

STONE RET. WALL

CONCRETE PAD

CONC. RET. WALL

EDGE OF GRAVEL

DETECTABLE MAT

BRICK WALKWAY

STONE RET. WALL

CONCRETE PAD

CONC. RET. WALL

EDGE OF GRAVEL

DETECTABLE MAT

BRICK WALKWAY

STONE RET. WALL

CONCRETE PAD

CONC. RET. WALL

EDGE OF GRAVEL

DETECTABLE MAT

BRICK WALKWAY

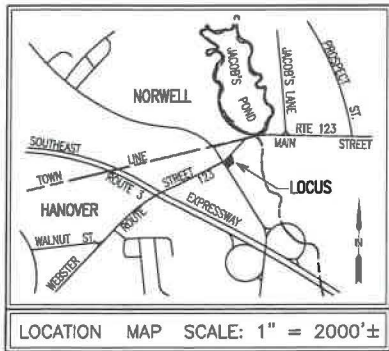
STONE RET. WALL

CONCRETE PAD

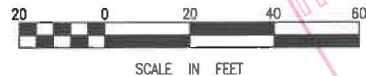
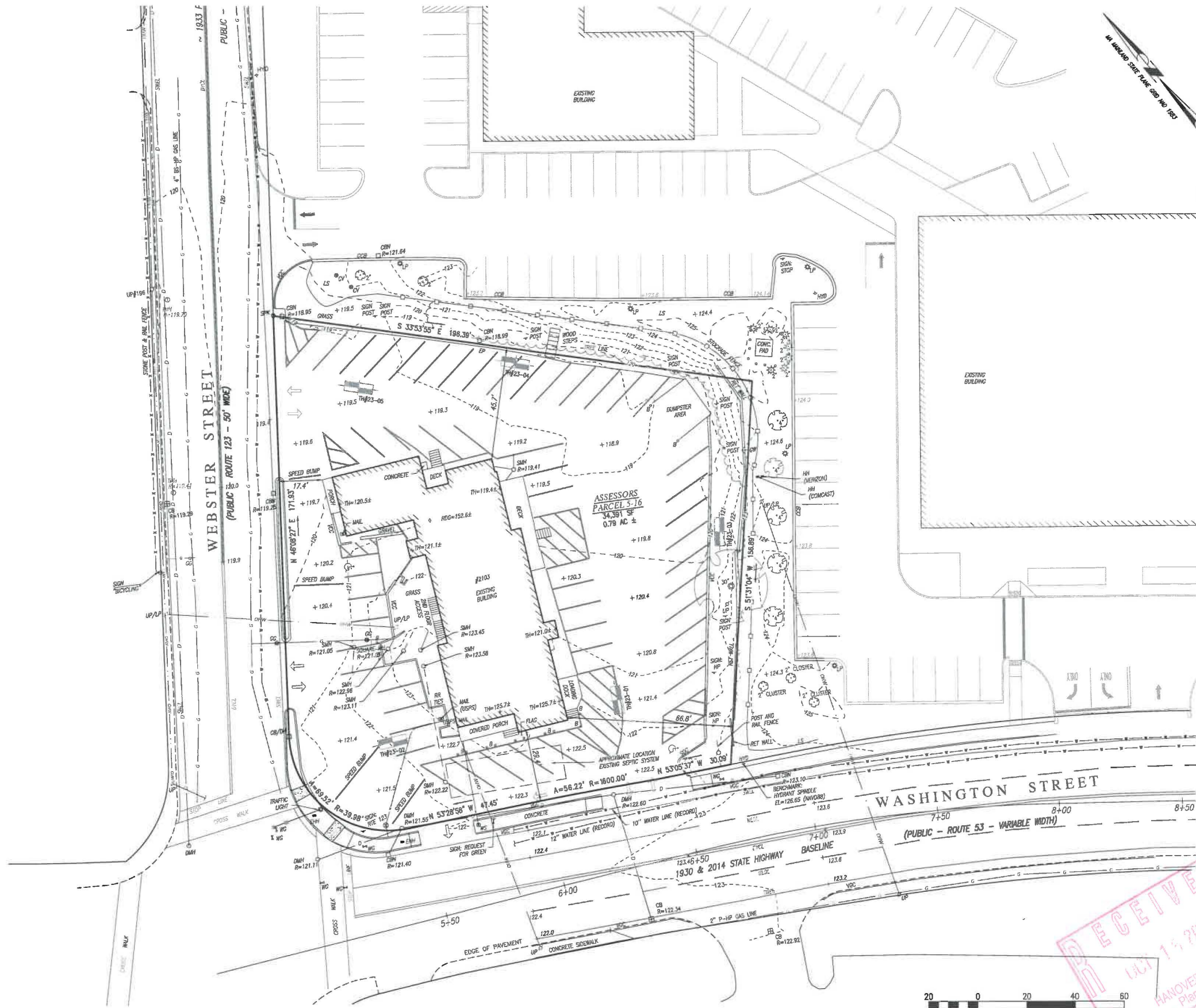
CONC. RET. WALL

EDGE OF GRAVEL

DE



TEST HOLE NOTE:
* REFER TO GENERAL NOTES/ INDEX SHEET
FOR TEST HOLE INFORMATION & RESULTS



merrillinc.com

REVISIONS:

DRAWN BY:

NC

DESIGNED BY:

DWK

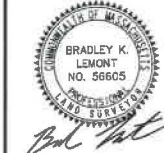
CHECKED BY:

DWK

SCALE:

1" = 20'

STAMP:



Engineers and Land Surveyors

427 Columbia Road
Hanover, MA 02339
781-826-9200

40 Court Street, Suite 2A
Plymouth, MA 02360
508-746-6060

448 N. Falmouth Highway
North Falmouth, MA 02556
508-563-2183

Marine Division:
26 Union Street
Plymouth, MA 02360
508-746-6060

PROJECT #:

22-188

PROJECT:

**DEFINITIVE
SITE PLAN**

2053, 2055, 2057 & 2103
WASHINGTON STREET
HANOVER, MASSACHUSETTS

CLIENT:

2103 WASHINGTON ST LLC
552 ADAMS STREET
MILTON, MA 02186
(781) 982-1144

DRAWING PATH:

H:\22-188\DESIGN\22-188 EX, DEMO.DWG

DATE:

OCTOBER 16, 2023

**EXISTING CONDITIONS
PLAN**

C3.1

© Merrill Corporation

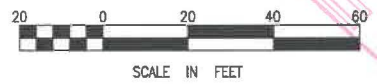
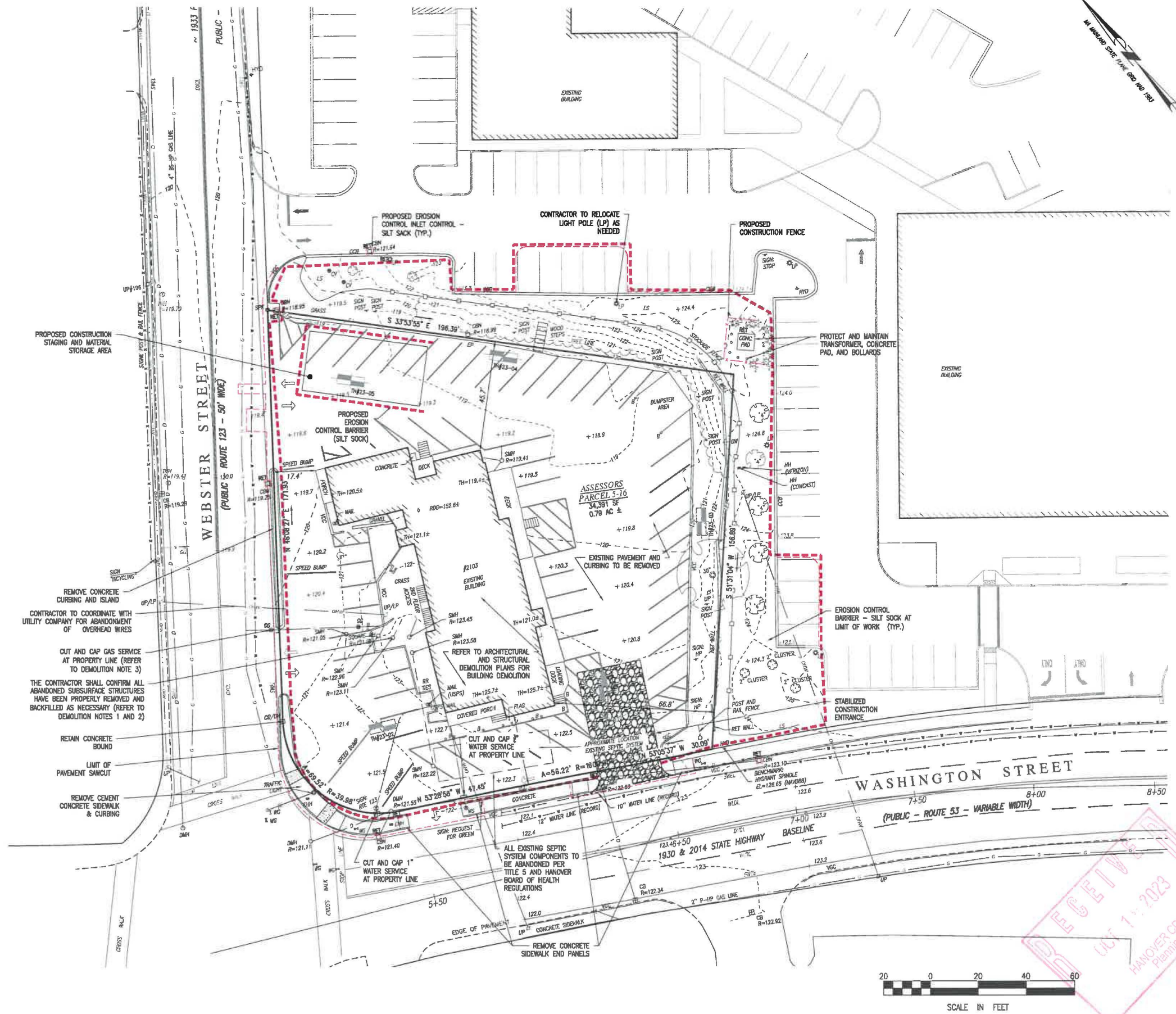
COPYRIGHT © BY MERRILL CORPORATION
NO PART OF THIS DOCUMENT MAY BE REPRODUCED, STORED IN A RETRIEVAL SYSTEM, OR TRANSMITTED IN ANY FORM OR BY ANY MEANS, ELECTRONIC, MECHANICAL, PHOTOCOPYING, RECORDING, OR BY ANY INFORMATION STORAGE AND RETRIEVAL SYSTEM, WITHOUT THE WRITTEN PERMISSION OF MERRILL CORPORATION. ANY VIOLATIONS MADE TO THIS DOCUMENT WITHOUT THE WRITTEN PERMISSION OF MERRILL CORPORATION SHALL BE SUBJECT TO LITIGATION.

DEMOLITION NOTES:

1. ALL MANMADE FEATURES TO BE DEMOLISHED AND REMOVED WITHIN THE SITE IN THEIR ENTIRETY UNLESS OTHERWISE NOTED. EXISTING FEATURES TO INCLUDE BUT NOT LIMITED TO UNDERGROUND DRAINAGE STRUCTURES, ABANDONED SEPTIC SYSTEMS COMPONENTS, FENCING, ALL DISCARDED RUBBISH AND/OR TRASH AROUND THE PROPERTY, CURBING, PLANTERS, ASPHALT, SIGNAGE, BOLLARDS, CONCRETE SLABS, AND LIGHTING. ALL DEBRIS TO BE DISPOSED OF IN ACCORDANCE WITH FEDERAL, STATE AND LOCAL REGULATIONS.
2. COMPLETELY FILL BELOW GRADE AREAS AND VOIDS RESULTING FROM THE DEMOLITION ACTIVITIES WITH SOIL MATERIALS CONSISTING OF STONE, GRAVEL AND SAND, FREE FROM DEBRIS, TRASH, FROZEN MATERIALS, ROOTS AND OTHER ORGANIC MATTER. STONES USED WILL NOT BE LARGER THAN 6 INCHES IN DIMENSION. MATERIAL FROM DEMOLITION MAY NOT BE USED AS FILL. PRIOR TO PLACEMENT OF FILL MATERIALS, UNDER TAKE ALL NECESSARY ACTION IN ORDER TO ENSURE THAT AREAS TO BE FILLED ARE FREE OF STANDING WATER, FROZEN MATERIAL, TRASH, DEBRIS. PLACE FILL MATERIALS IN HORIZONTAL LAYERS NOT EXCEEDING 6 INCHES LOOSE DEPTH AND COMPACT EACH LAYER AT PLACEMENT TO 95% OPTIMUM DENSITY, GRADE THE SURFACE TO MEET ADJACENT CONTOURS.
3. ALL GAS CUT AND CAP WORK TO BE PERFORMED BY THE GAS COMPANY. ALL EXCAVATION, REMOVAL AND BACKFILLING OF GAS SERVICE LINES ON SITE SHALL BE PERFORMED BY THE CONTRACTOR.
4. CONTRACTOR SHALL BE SOLELY RESPONSIBLE FOR SITE SECURITY AND JOB SAFETY. ALL CONSTRUCTION ACTIVITY SHALL BE IN ACCORDANCE WITH OSHA STANDARDS AND LOCAL REQUIREMENTS.
5. ALL WORK PERFORMED WITHIN THE PUBLIC RIGHT-OF-WAY SHALL CONFORM TO ALL LOCAL MUNICIPAL STANDARDS. CONDUCT DEMOLITION SERVICES IN SUCH A MANNER TO ENSURE MINIMUM INTERFERENCE WITH STREETS, WALKS AND OTHER ADJACENT FACILITIES.
6. THE LOCATIONS OF EXISTING UNDERGROUND UTILITIES ARE IN AN APPROXIMATE WAY ONLY AND HAVE NOT BEEN INDEPENDENTLY VERIFIED BY THE OWNER OR ITS REPRESENTATIVE. THE CONTRACTOR SHALL DETERMINE THE EXACT LOCATION OF ALL EXISTING UTILITIES BEFORE COMMENCING WORK, AND AGREES TO BE FULLY RESPONSIBLE FOR ANY AND ALL DAMAGES WHICH MIGHT BE OCCASIONED BY THE CONTRACTOR'S FAILURE TO EXACTLY LOCATE AND PRESERVE ANY AND ALL UNDERGROUND UTILITIES. ALL REPAIRS SHALL BE MADE AT THE CONTRACTOR'S EXPENSE. THE CONTRACTOR IS TO CONTACT "DIG-SAFE" 72 HOURS PRIOR TO ANY EXCAVATION AT 1-888-344-7233.
7. ALL DOMESTIC WATER AND FIRE PROTECTION SERVICES MUST BE CUT AND CAPPED AT THE PROPERTY LINE. GATE VALVE, FRAME AND COVER AND ALL APPURTENANCES MUST BE REMOVED IN ACCORDANCE WITH THE TOWN WATER DEPARTMENT SPECIFICATIONS AND STANDARD DETAILS.

EROSION AND SEDIMENTATION CONTROL NOTES:

1. THE CONTRACTOR SHALL COORDINATE A PRE CONSTRUCTION MEETING AT LEAST 48 HOURS PRIOR TO ANY CONSTRUCTION ACTIVITY WITH THE DEVELOPER, TOWN PLANNER, AND ANY INTERESTED TOWN DEPARTMENT REPRESENTATIVES.
2. CONTRACTOR SHALL INSTALL EROSION CONTROL MEASURES PRIOR TO EARTHWORK OPERATION AND MAINTAIN ALL EROSION MEASURES DURING CONSTRUCTION. EROSION CONTROL MEASURES SHALL BE REMOVED ONLY UPON THE ESTABLISHMENT OF ALL LANDSCAPED AREAS AND FINAL PAVEMENT IS INSTALLED.
3. IF EXISTING DRAINAGE STRUCTURES ARE TO BE USED DURING CONSTRUCTION, SILT SACKS SHALL BE INSTALLED PRIOR TO THE COMMENCEMENT OF WORK.
4. STEEP SLOPES, WHERE POSSIBLE, WILL NOT BE DISTURBED.
5. NATURAL WATERWAYS WILL BE PRESERVED AND PROTECTED, AND EXISTING VEGETATION WILL BE RETAINED AND PROTECTED TO THE EXTENT PRACTICABLE.
6. THE CONTRACTOR SHALL MINIMIZE THE AREAS OF DISTURBED LAND TO THE EXTENT FEASIBLE.
7. SEDIMENT CONTROL MEASURES WILL BE APPLIED TO CONTROL ANY SEDIMENTS THAT MAY BE PRODUCED AS A RESULT OF SITE CONSTRUCTION ACTIVITIES. EROSION AND DEPOSITION OF SEDIMENT WILL BE CLOSELY MONITORED DURING CONSTRUCTION.
8. TEMPORARY EROSION CONTROL MEASURES WILL INCLUDE HAY BALE CHECK DAMS, FILTER FABRIC, SILT FENCES, MULCH SOCKS, SEEDING AND MULCHING, AND SEEDED FILTER TRAPS.
9. TOPSOIL STRIPPED FROM CUT AND FILL AREAS WILL BE STOCKPILED FOR LOAMING AND SEEDING AT LATER CONSTRUCTION STAGES. THE STOCKPILES SHALL BE LOCATED SO AS TO ACT AS TEMPORARY DIVERSIONS, GENERALLY ON THE UPHILL SLOPE.
10. STOCKPILES SHALL BE SURROUNDED ON THEIR PERIMETER WITH SILT SOCK AND/OR SILTATION FENCES TO PREVENT AND/OR CONTROL SILTATION AND EROSION. THE LOCATION OF THE STOCKPILE AREAS MAY BE MODIFIED AS APPROVED BY THE ENGINEER.
11. TOPS OF STOCKPILES SHALL BE COVERED IN SUCH A MANNER SO THAT STORMWATER DOES NOT INFILTRATE THE MATERIALS AND THEREBY RENDER THE SAME UNSUITABLE FOR FILL USE.
12. ALL DISTURBED OR EXPOSED AREAS SUBJECT TO EROSION SHALL BE STABILIZED WITH MULCH OR SEEDING FOR TEMPORARY VEGETATIVE COVER. WHERE CONSTRUCTION ACTIVITIES HAVE PERMANENTLY CEASED OR HAVE TEMPORARILY BEEN SUSPENDED FOR MORE THAN SEVEN DAYS, OR WHEN FINAL GRADES ARE REACHED IN ANY PORTION OF THE SITE, STABILIZATION PRACTICES SHALL BE IMPLEMENTED WITHIN THREE DAYS. AREAS THAT REMAIN DISTURBED BUT INACTIVE FOR AT LEAST THIRTY DAYS SHALL RECEIVE TEMPORARY SEEDING IN ACCORDANCE WITH THE MASSACHUSETTS EROSION AND SEDIMENT CONTROL GUIDELINES.
13. EARTHWORK ACTIVITY ON THE SITE SHALL BE DONE IN A MANNER SUCH THAT RUNOFF IS DIRECTED TO THE LINE OF SILT SOCK EROSION CONTROL.
14. DURING UTILITY CONSTRUCTION, ALL WATER PUMPED FROM THE EXCAVATED TRENCH SHALL BE DIRECTED TO A "DIRTY BAG" PUMPED SEDIMENT REMOVAL SYSTEM (OR APPROVED EQUAL) AS MANUFACTURED BY ACF ENVIRONMENTAL.
15. CULVERT/PIPE INLETS AND OUTFALLS SHALL BE PROTECTED BY HAYBALE FILTERS UNTIL DISTURBED AREAS ARE PERMANENTLY STABILIZED.
16. SILT SACKS SHALL BE UTILIZED AT ALL EXISTING AND PROPOSED TREE BOX FILTERS SUBJECT TO STORMWATER RUNOFF FROM PROPOSED FILL AREAS DURING CONSTRUCTION, OR AS DIRECTED BY THE OWNER/ENGINEER. NO SEDIMENT SHALL ENTER THE ON-SITE DRAINAGE SYSTEMS AT ANY TIME.
17. ALL EROSION CONTROL MEASURES SHALL BE ROUTINELY INSPECTED, CLEANED, REPAIRED, AND REPLACED AS NECESSARY THROUGHOUT ALL PHASES OF CONSTRUCTION. IN ADDITION, INSPECTION SHALL TAKE PLACE AFTER EACH RAINFALL EVENT.
18. ALL PROPOSED SLOPES (EXCLUDING THE RIPRAP SLOPE) STEEPER THAN 3:1 SHALL BE STABILIZED WITH A CURLEX EROSION CONTROL MATTING BY AMERICAN EXCELSIOR COMPANY (OR APPROVED EQUAL) AND PROTECTED FROM EROSION.
19. THE CONTRACTOR SHALL KEEP ON SITE AT ALL TIMES ADDITIONAL SILT SOCK AND EXTRA SILTATION FENCING FOR INSTALLATION AT THE DIRECTION OF THE ENGINEER, THE CONSERVATION COMMISSION OR THE PLANNING BOARD TO MITIGATE ANY EMERGENCY CONDITION.



merrillinc.com

REVISIONS:

DRAWN BY:

NC

DESIGNED BY:

DWK

CHECKED BY:

DWK

SCALE:

1" = 20'

STAMP:



Merrill
Engineers and Land Surveyors

427 Columbia Road
Hanover, MA 02339
781-829-9200

40 Court Street, Suite 2A
Plymouth, MA 02360
508-746-6080

448 N. Falmouth Highway
North Falmouth, MA 02556
508-563-2183

Martha Division:
26 Union Street
Plymouth, MA 02360
508-746-6080

PROJECT #:

22-188

PROJECT:

**DEFINITIVE
SITE PLAN**

2053, 2055, 2057 & 2103
WASHINGTON STREET
HANOVER, MASSACHUSETTS

CLIENT:
2103 WASHINGTON ST LLC
552 Adams Street
WILTON, MA 02186
(781) 982-1144

DRAWING PATH:
H:\22-188\DESIGN\22-188 EX DEMO.DWG

DATE:

OCTOBER 16, 2023

**EROSION CONTROL
AND DEMOLITION PLAN**

C4.1
© Merrill Corporation

ZONING DATA:

DISTRICT: COMMERCIAL DISTRICT WITH ADULT USE, MEDICAL MARIJUANA & WIRELESS TELECOMMUNICATIONS OVERLAYS					
USE: BANK ATM & RETAIL	ASSESSORS MAP 5 LOT 16		MERGE OF MAP 5 LOTS 13, 16, 18, 75		
CRITERIA	REQUIRED	EXISTING	PROPOSED	EX. MERCHANTS ROW	PROPOSED LOT MERGE
LOT AREA (TOTAL)	44,000 SF (MIN.)	34,391± SF	NO CHANGE	438,303± SF	472,694± SF
BUILDABLE UPLAND WETLAND		34,391± SF		302,787± SF	337,178± SF
LOT FRONTAGE ²	200 FT (MIN.)			135,516± SF	135,516± SF
WASHINGTON ST		181.01 FT	NO CHANGE	618.82 FT	797.71 FT
WEBSTER ST		219.28 FT	NO CHANGE	311.05 FT	523.4 FT
FRONT SETBACK	75 FT (MIN.)				
WASHINGTON ST		29.4 FT	68.4 FT	75.1 FT	68.4 FT
WEBSTER ST		17.4 FT	63.6 FT	87.7 FT	63.6 FT
REAR SETBACK	25 FT (MIN.)	N/A	N/A	244.8 FT	244.8 FT
SIDE SETBACK	15 FT (MIN.)	45.7 FT	18.9 FT	33.0 FT	33.0 FT
BUILDING HEIGHT ³	35 FT (MAX.)	33.2 FT	1 STORY, < 35 FT	< 35 FT	NO CHANGE
BUILDING COVERAGE ^{2,4}	12%-15%	15.1%	21.1%	20.5%	20.4%
LOT COVERAGE ⁴	60% (MAX.)	89.9%	79.9%	73.9%	75.3%

ZONING NOTES:

- WHEN THE USE IS FOR A BANK, RESTAURANT, SERVICE STATION OR ANY OPERATION WHICH GENERATES SIMILAR HIGH TRAFFIC COUNTS, MAXIMUM BUILDING COVERAGE SHALL NOT EXCEED TWELVE PERCENT (12%) OF THE LOT AREA. (SECTION 7.540.A)
- WHEN THE USE IS FOR GENERAL RETAILING OF GOODS WITHIN A STRUCTURE, THE MAXIMUM BUILDING COVERAGE SHALL NOT EXCEED FIFTEEN PERCENT (15%) OF THE LOT AREA. (SECTION 7.540.B)
- THE HEIGHT OF ANY BUILDING OR STRUCTURE SHALL NOT EXCEED THIRTY-FIVE (35) FEET AT ANY FACE MEASURED FROM THE AVERAGE GRADE FOR EACH SUCH FACE, AND SHALL NOT EXCEED THREE (3) STORIES ABOVE THE AVERAGE GRADE AT THE FOUNDATION LINES. (SECTION 7.110)
- IN ALL ZONING DISTRICTS, ANY PORTION OF A LOT WHICH IS LOCATED IN A WETLANDS RESOURCE AREA OR IN A WELL PROTECTION ZONE SHALL NOT BE USED TO MEET ANY OF THE DIMENSIONAL REGULATIONS OF SECTION 7 EXCEPT IN ACCORDANCE WITH SECTIONS 8.110 OF THIS BYLAW AND EXCEPT THAT TEN PERCENT (10%) OF THAT AREA OF THE LOT WHICH IS LOCATED WITHIN THE 200 FOOT RIVERFRONT AREA MAY BE UTILIZED TO MEET THE LOT AREA REQUIREMENTS OF SAID SECTION 7. (SECTION 7.220)
- IF A LOT HAS FRONTAGE ON TWO (2) WAYS, BOTH FRONTAGES SHALL MEET THE REQUIREMENTS OF MINIMUM LOT FRONTAGE AND MINIMUM FRONT SETBACKS APPROPRIATE FOR THE ZONING DISTRICT IN WHICH THE LOT LIES. IN SUCH A CASE, THOSE LOT LINES CONSIDERED NOT TO BE FRONT LOT LINES SHALL BE DEEMED TO BE SIDE LOT LINES. A LOT SHALL BE CONSIDERED TO HAVE FRONTAGE ON TWO (2) WAYS IF THE FRONTAGE OF THE LOT INCLUDES ANY POINT ALONG THE ROUNDED CORNER BETWEEN THE TWO (2) INTERSECTING WAYS. IN SUCH A CASE, FRONTAGE SHALL BE MEASURED FROM THE POINT OF INTERSECTION OF THE EXTENDED WAYLINES AND ALONG EACH WAYLINE TO THE POINT WHERE A SIDE LOT LINE INTERSECTS THAT WAYLINE.

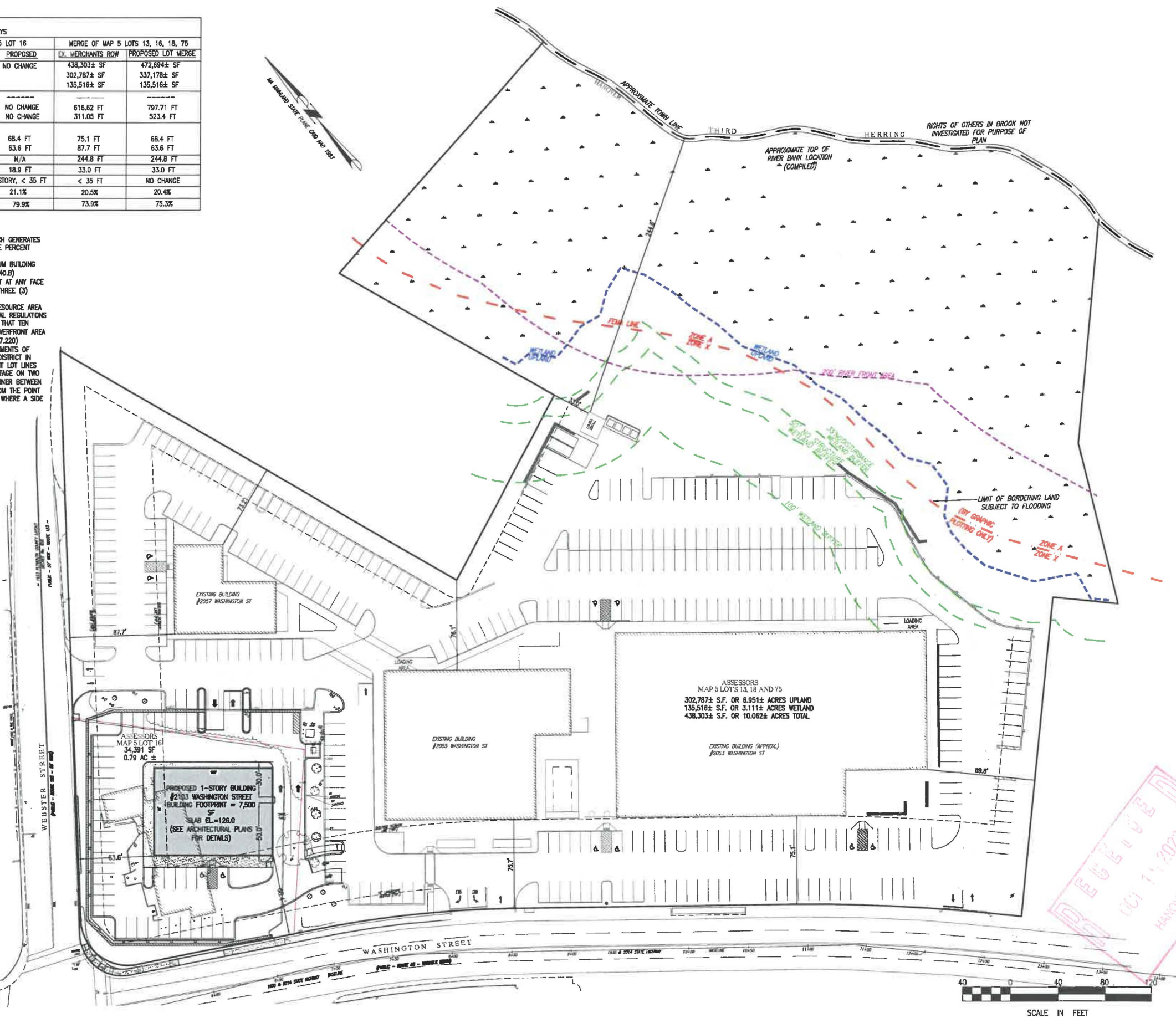
VARIANCE REQUESTS:

- LOT COVERAGE - SECTIONS 4.340
REQUEST: INCREASE FROM 73.9% TO 75.3%, (ALLOWS FOR ADEQUATE PARKING SPACES AND DRIVEWAY DIMENSIONS).

SPECIAL PERMIT REQUESTS:

- LOT SETBACKS (FRONT YARD) - SECTION 4.220.A.3.d
REQUEST: 63.6 FT, (CONFORMS MORE THAN EXISTING)
BUILDING COVERAGE - SECTION 4.220.A.3.d
REQUEST: 20.4%, (CONFORMS MORE THAN EXISTING)
PARKING SPACE SIZE - SECTION 9.110.E
REQUEST: 9' X 18' PARKING SPACES, (PROVIDES ADEQUATE PARKING SPACES)
- DRIVE THRU INGRESS & EGRESS - SECTION 9.030
REQUEST: 30 FT ON EGRESS.
- LANDSCAPE BUFFERS - SECTION 8.130
REQUEST: LANDSCAPE BUFFERS ON THE FRONT YARD WILL NOT MEET THE MINIMUM REQUIRED BUFFER OF 20' IN MANY AREAS OF THE SITE. (CONFORMS MORE THAN EXISTING).
- FRONT YARD PARKING - SECTION 9.060
REQUEST: 36 SPACES IN FRONT YARDS
(PROVIDES ADEQUATE PARKING FOR SITE AND SIMILAR TO ADJUTING PROPERTY).
- SITE GRADING - (SECTION 7.660)
REQUEST: THE PROPOSED SITE WILL REQUIRE GRADING OF 1 FOOT FOR MORE THAN 500 SF OF LAND.

COPYRIGHT © BY MERRILL CORPORATION
NO PART OF THIS DOCUMENT MAY BE REPRODUCED, STORED IN A RETRIEVAL SYSTEM, OR TRANSMITTED IN ANY FORM OR BY ANY MEANS, ELECTRONIC, MECHANICAL, PHOTOCOPYING, RECORDING, OR BY ANY INFORMATION STORAGE AND RETRIEVAL SYSTEM, WITHOUT THE WRITTEN PERMISSION OF MERRILL CORPORATION.
ANY MODIFICATIONS MADE TO THIS DOCUMENT WITHOUT THE EXPRESS WRITTEN CONSENT OF MERRILL CORPORATION SHALL RENDER IT INVALID.



merrillinc.com

REVISIONS:

DRAWN BY:

NC

DESIGNED BY:

DWK

CHECKED BY:

DWK

SCALE:

1" = 40'

STAMP:



Nicholas J. Keller



Merrill
Engineers and Land Surveyors

427 Columbia Road
Hanover, MA 02339
781-826-9200

40 Court Street, Suite 2A
Plymouth, MA 02360
508-746-6060

448 N. Falmouth Highway
North Falmouth, MA 02556
508-563-2183

Marine Division:
28 Union Street
Plymouth, MA 02360
508-746-6060

PROJECT #:

22-188

PROJECT:

**DEFINITIVE
SITE PLAN**

2053, 2055, 2057 & 2103
WASHINGTON STREET
HANOVER, MASSACHUSETTS

CLIENT:

2103 WASHINGTON ST LLC
552 ADAMS STREET
MILTON, MA 02186
(781) 982-1144

DRAWING PATH:
H:\22-188\DESIGN\22-188 10, 11, 12, 13, 14, 15, 16, 17, 18, 19, 20, 21, 22, 23, 24, 25, 26, 27, 28, 29, 30, 31, 32, 33, 34, 35, 36, 37, 38, 39, 40, 41, 42, 43, 44, 45, 46, 47, 48, 49, 50, 51, 52, 53, 54, 55, 56, 57, 58, 59, 60, 61, 62, 63, 64, 65, 66, 67, 68, 69, 70, 71, 72, 73, 74, 75, 76, 77, 78, 79, 80, 81, 82, 83, 84, 85, 86, 87, 88, 89, 90, 91, 92, 93, 94, 95, 96, 97, 98, 99, 100, 101, 102, 103, 104, 105, 106, 107, 108, 109, 110, 111, 112, 113, 114, 115, 116, 117, 118, 119, 120, 121, 122, 123, 124, 125, 126, 127, 128, 129, 130, 131, 132, 133, 134, 135, 136, 137, 138, 139, 140, 141, 142, 143, 144, 145, 146, 147, 148, 149, 150, 151, 152, 153, 154, 155, 156, 157, 158, 159, 160, 161, 162, 163, 164, 165, 166, 167, 168, 169, 170, 171, 172, 173, 174, 175, 176, 177, 178, 179, 180, 181, 182, 183, 184, 185, 186, 187, 188, 189, 190, 191, 192, 193, 194, 195, 196, 197, 198, 199, 200, 201, 202, 203, 204, 205, 206, 207, 208, 209, 210, 211, 212, 213, 214, 215, 216, 217, 218, 219, 220, 221, 222, 223, 224, 225, 226, 227, 228, 229, 230, 231, 232, 233, 234, 235, 236, 237, 238, 239, 240, 241, 242, 243, 244, 245, 246, 247, 248, 249, 250, 251, 252, 253, 254, 255, 256, 257, 258, 259, 260, 261, 262, 263, 264, 265, 266, 267, 268, 269, 270, 271, 272, 273, 274, 275, 276, 277, 278, 279, 280, 281, 282, 283, 284, 285, 286, 287, 288, 289, 290, 291, 292, 293, 294, 295, 296, 297, 298, 299, 300, 301, 302, 303, 304, 305, 306, 307, 308, 309, 310, 311, 312, 313, 314, 315, 316, 317, 318, 319, 320, 321, 322, 323, 324, 325, 326, 327, 328, 329, 330, 331, 332, 333, 334, 335, 336, 337, 338, 339, 340, 341, 342, 343, 344, 345, 346, 347, 348, 349, 350, 351, 352, 353, 354, 355, 356, 357, 358, 359, 360, 361, 362, 363, 364, 365, 366, 367, 368, 369, 370, 371, 372, 373, 374, 375, 376, 377, 378, 379, 380, 381, 382, 383, 384, 385, 386, 387, 388, 389, 390, 391, 392, 393, 394, 395, 396, 397, 398, 399, 400, 401, 402, 403, 404, 405, 406, 407, 408, 409, 410, 411, 412, 413, 414, 415, 416, 417, 418, 419, 420, 421, 422, 423, 424, 425, 426, 427, 428, 429, 430, 431, 432, 433, 434, 435, 436, 437, 438, 439, 440, 441, 442, 443, 444, 445, 446, 447, 448, 449, 450, 451, 452, 453, 454, 455, 456, 457, 458, 459, 460, 461, 462, 463, 464, 465, 466, 467, 468, 469, 470, 471, 472, 473, 474, 475, 476, 477, 478, 479, 480, 481, 482, 483, 484, 485, 486, 487, 488, 489, 490, 491, 492, 493, 494, 495, 496, 497, 498, 499, 500, 501, 502, 503, 504, 505, 506, 507, 508, 509, 510, 511, 512, 513, 514, 515, 516, 517, 518, 519, 520, 521, 522, 523, 524, 525, 526, 527, 528, 529, 530, 531, 532, 533, 534, 535, 536, 537, 538, 539, 540, 541, 542, 543, 544, 545, 546, 547, 548, 549, 550, 551, 552, 553, 554, 555, 556, 557, 558, 559, 560, 561, 562, 563, 564, 565, 566, 567, 568, 569, 570, 571, 572, 573, 574, 575, 576, 577, 578, 579, 580, 581, 582, 583, 584, 585, 586, 587, 588, 589, 590, 591, 592, 593, 594, 595, 596, 597, 598, 599, 600, 601, 602, 603, 604, 605, 606, 607, 608, 609, 610, 611, 612, 613, 614, 615, 616, 617, 618, 619, 620, 621, 622, 623, 624, 625, 626, 627, 628, 629, 630, 631, 632, 633, 634, 635, 636, 637, 638, 639, 640, 641, 642, 643, 644, 645, 646, 647, 648, 649, 650, 651, 652, 653, 654, 655, 656, 657, 658, 659, 660, 661, 662, 663, 664, 665, 666, 667, 668, 669, 670, 671, 672, 673, 674, 675, 676, 677, 678, 679, 680, 681, 682, 683, 684, 685, 686, 687, 688, 689, 690, 691, 692, 693, 694, 695, 696, 697, 698, 699, 700, 701, 702, 703, 704, 705, 706, 707, 708, 709, 710, 711, 712, 713, 714, 715, 716, 717, 718, 719, 720, 721, 722, 723, 724, 725, 726, 727, 728, 729, 730, 731, 732, 733, 734, 735, 736, 737, 738, 739, 740, 741, 742, 743, 744, 745, 746, 747, 748, 749, 750, 751, 752, 753, 754, 755, 756, 757, 758, 759, 760, 761, 762, 763, 764, 765, 766, 767, 768, 769, 770, 771, 772, 773, 774, 775, 776, 777, 778, 779, 780, 781, 782, 783, 784, 785, 786, 787, 788, 789, 790, 791, 792, 793, 794, 795, 796, 797, 798, 799, 800, 801, 802, 803, 804, 805, 806, 807, 808, 809, 810, 811, 812, 813, 814, 815, 816, 817, 818, 819, 820, 821, 822, 823, 824, 825, 826, 827, 828, 829, 830, 831, 832, 833, 834, 835, 836, 837, 838, 839, 840, 841, 842, 843, 844, 845, 846, 847, 848, 849, 850, 851, 852, 853, 854, 855, 856, 857, 858, 859, 860, 861, 862, 863, 864, 865, 866, 867, 868, 869, 870, 871, 872, 873, 874, 875, 876, 877, 878, 879, 880, 881, 882, 883, 884, 885, 886, 887, 888, 889, 890, 891, 892, 893, 894, 895, 896, 897, 898, 899, 900, 901, 902, 903, 904, 905, 906, 907, 908, 909, 910, 911, 912, 913, 914, 915, 916, 917, 918, 919, 920, 921, 922, 923, 924, 925, 926, 927, 928, 929, 930, 931, 932, 933, 934, 935, 936, 937, 938, 939, 940, 941, 942, 943, 944, 945, 946, 947, 948, 949, 950, 951, 952, 953, 954, 955, 956, 957, 958, 959, 960, 961, 962, 963, 964, 965, 966, 967, 968, 969, 970, 971, 972, 973, 974, 975, 976, 977, 978, 979, 980, 981, 982, 983, 984, 985, 986, 987, 988, 989, 990, 991, 992, 993, 994, 995, 996, 997, 998, 999, 1000

DATE:

OCTOBER 16, 2023

ZONING PLAN

C5.1
© Merrill Corporation

[illegible]

DRAWN BY:	NC
DESIGNED BY:	DWK
CHECKED BY:	DWK
SCALE:	1" = 20'
STAMP:	



427 Columbia Road
Hanover, MA 02339
781-826-9200

40 Court Street Suite 2A
Plymouth, MA 02360
508-746-6060

448 N. Falmouth Highway
North Falmouth, MA 02556
508-563-2183

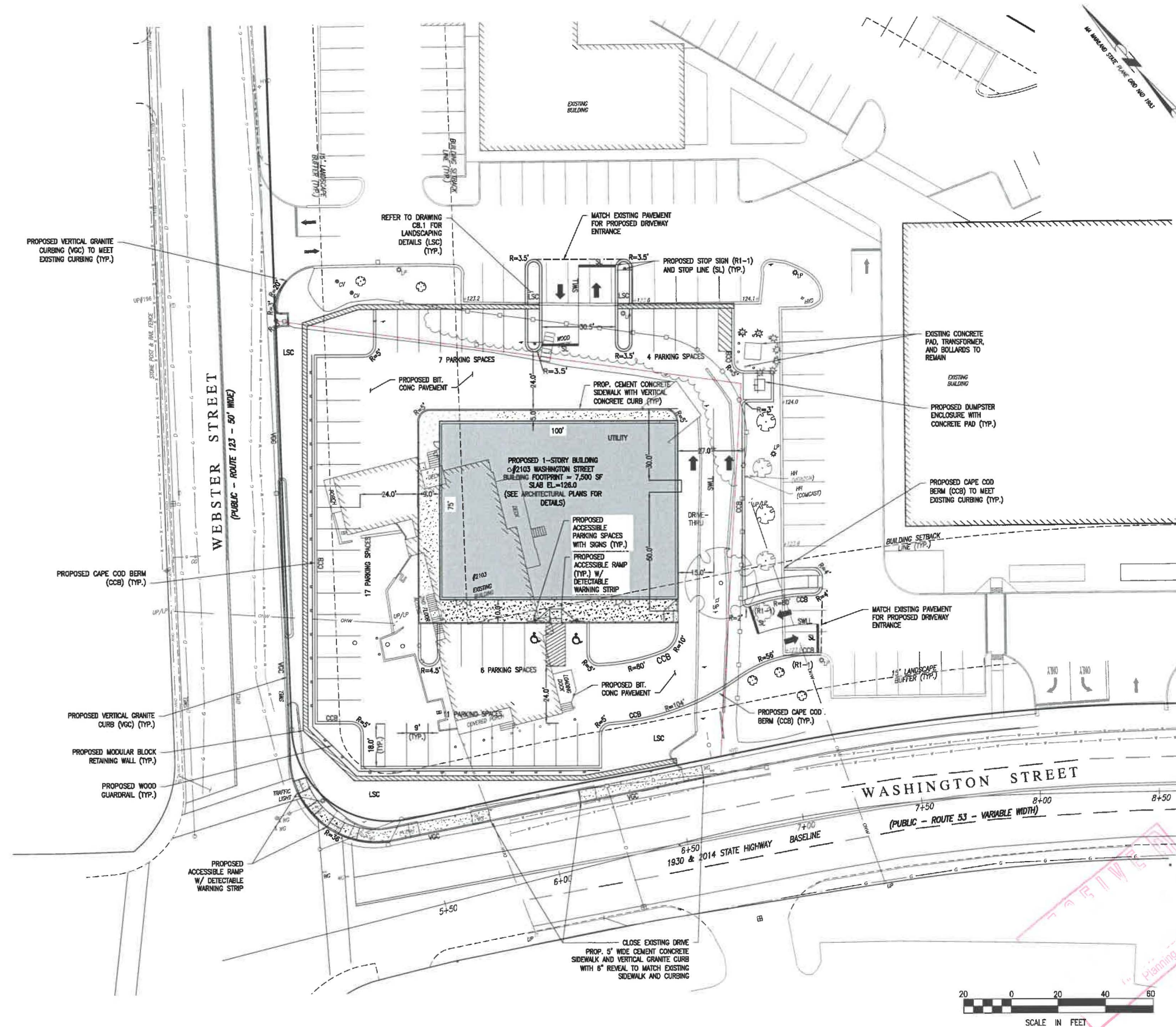
Marine Division:
26 Union Street
Plymouth, MA 02360
508-746-6060

PROJECT # _____
22-188
PROJECT:
**DEFINITIVE
SITE PLAN**
2053, 2055, 2057 & 2103
WASHINGTON STREET
HANOVER, MASSACHUSETTS

CLIENT:
2103 WASHINGTON ST LLC
552 ADAMS STREET
MILTON, MA 02186
(781) 982-1144

DRAWING PATH: \\122-188\DESIGN\122-188 LO, LT, LSC, ZUNING.DWG
DATE: OCTOBER 16, 2023
SITE LAYOUT PLAN

C5.2
© Merrill Corporation



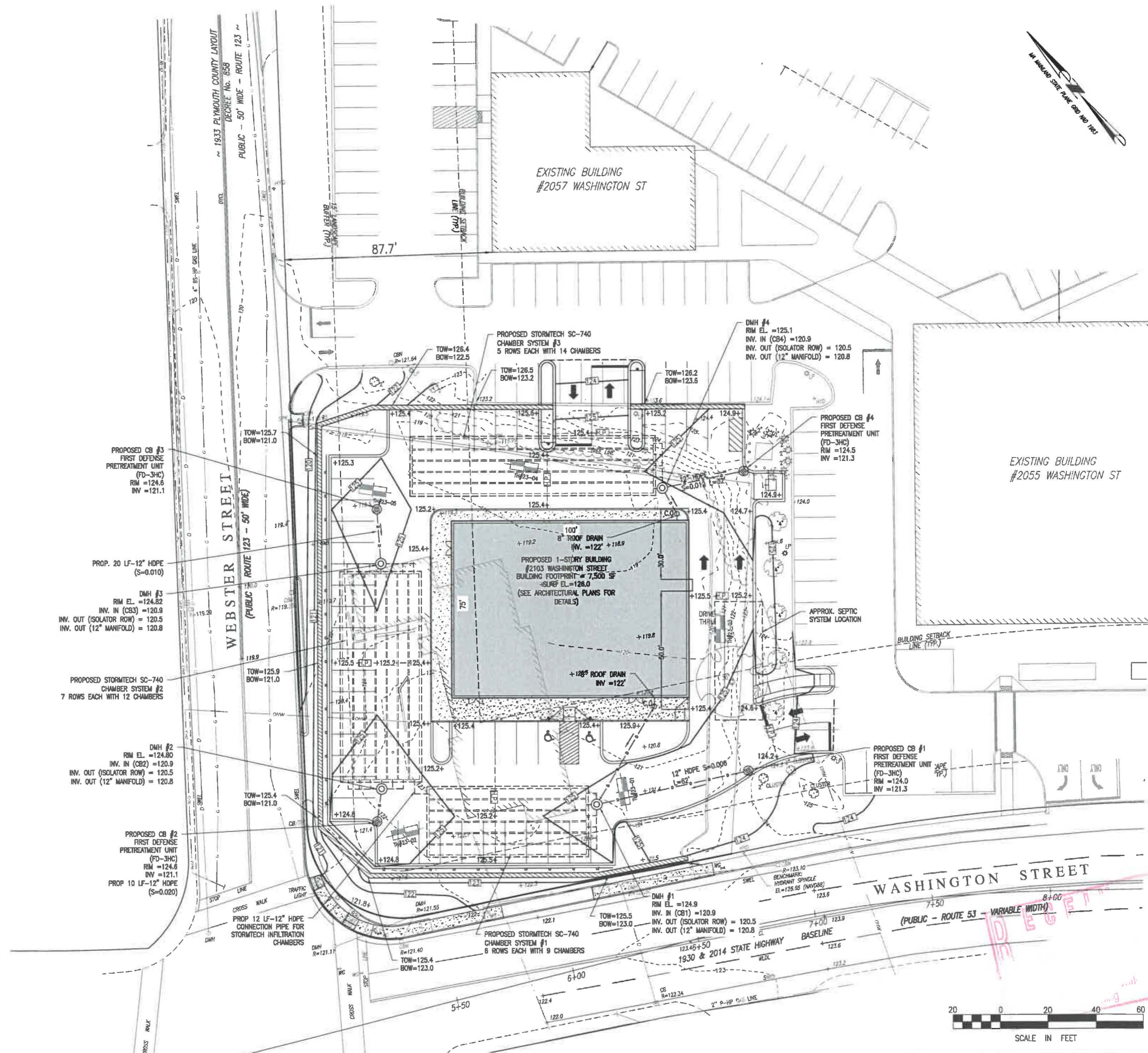
COPYRIGHT © BY MERRILL CORPORATION
NO PART OF THIS DOCUMENT MAY BE REPRODUCED, STORED IN A RETRIEVAL SYSTEM, OR TRANSMITTED IN ANY FORM OR BY ANY MEANS, ELECTRONIC, MECHANICAL, PHOTOCOPYING, RECORDING OR OTHERWISE, WITHOUT THE EXPRESS WRITTEN CONSENT OF MERRILL CORPORATION WITH THE EXCEPTION THAT ANY REPRODUCTION OF THIS DOCUMENT FOR PERSONAL OR INTERNAL USE OF AN INDIVIDUAL OR A COMPANY OR FOR THE PERSONAL OR INTERNAL USE OF ANY REGULATORY AGENCY IN CONNECTION WITH THE PERFORMANCE OF OFFICIAL BUSINESS UNDER ITS JURISDICTION, OR ANY REPRODUCTIONS MADE TO THIS DOCUMENT WITHOUT THE EXPRESS WRITTEN CONSENT OF MERRILL CORPORATION SHALL BE DEEMED IT UNLAWFUL.

1. THE CONTRACTOR SHALL BE RESPONSIBLE FOR ESTABLISHING AND MAINTAINING ALL CONTROL POINTS AND BENCH MARKS NECESSARY FOR THE WORK.
2. ALL ON-SITE STORM DRAINAGE PIPES SHALL BE HDPE ADS (N-12) CORRUGATED POLYETHYLENE (SMOOTH INTERIOR) PIPE, UNLESS NOTED OTHERWISE.
3. REINFORCED CONCRETE MANHOLES & CATCHBASINS SHALL BE MANUFACTURED IN ACCORDANCE WITH ASTM SPECIFICATION C478 AND MS&STO DESIGNATION M199. ALL CONCRETE STRUCTURES SHALL MEET THE LATEST MASS HIGHWAY DEPARTMENT SPECIFICATIONS AND HANOVER SUBDIVISION STANDARDS.
4. CORRUGATED POLYETHYLENE PIPE AND STRUCTURES SHALL CONFORM WITH MS&STO DESIGNATIONS M199 AND M252. PIPE SHALL BE MANUFACTURED WITH HIGH DENSITY POLYETHYLENE PLASTIC AND SHALL BE ADS N-12 PIPE AS MANUFACTURED BY ADVANCE DRAINAGE SYSTEM, INC. OR HANCOR HI Q PIPE AS MANUFACTURED BY HANCOR, INC. OR APPROVED EQUAL UNLESS OTHERWISE NOTED OR DETAILD.
5. BACKFILL SHALL BE COMPACTED TO 95% MAXIMUM DRY DENSITY BY MS&STO T-1800 METHOD. SHEETING, IF USED, SHALL BE REMOVED PRIOR TO BACKFILLING TRENCH. UNSUITABLE SOIL BELOW THE INVERT SHALL BE REMOVED AND REPLACED WITH APPROVED MATERIAL AND SHALL NOT BE USED AS BACKFILL.
7. A MINIMUM OF 18" VERTICAL CLEARANCE SHALL BE MAINTAINED WHERE WATER SERVICES CROSS STORM DRAIN LINES.
8. ALL SERVICE CONNECTIONS (I.E. ROOF AND CANOPY DRAINS) SHALL BE DIRECTED TOWARDS THE ON SITE DRAINAGE FACILITIES. COORDINATE WITH THE ARCHITECTURAL PLANS FOR CONNECTIONS. THE ROOF DRAINS FROM THE BUILDING SHALL CONNECT TO INFILTRATION CHAMBERS 1 AND 3.

DURING CONSTRUCTION OF THE DRAINAGE INFILTRATION SYSTEMS, THE FOLLOWING MEASURES SHALL BE TAKEN:

1. ALL STOCKPILES SHALL BE STORED DOWN GRADIENT OF THE EXCAVATION TO ENSURE ANY POTENTIAL SEDIMENT DOES NOT REACH THE INFILTRATION AREA.
2. ALL EQUIPMENT FOR EXCAVATION AND PLACEMENT OF STONE AND STRUCTURES SHALL BE KEPT OUTSIDE THE AREA OF THE SYSTEM.
3. ALL WATER RESULTING FROM DENATURING ACTIVITIES SHALL BE DIRECTED AWAY FROM THE INFILTRATION AREAS.
4. NO STORMWATER SHALL BE DISCHARGED INTO THESE FACILITIES UNTIL THE CONTRIBUTING AREAS ARE FULLY STABILIZED WITH PAVEMENT, VEGETATION OR OTHER PERMANENT TREATMENT.

COPYRIGHT © BY MERRILL CORPORATION



REVISIONS:

DRAWN BY:

1

DESIGNED BY:

1

CHECKED BY:

1

SCALE:

1'

STAMP:



427 Columbia Road
Hanover, MA 02339
781-826-9200

40 Court Street, Suite 2A
Plymouth, MA 02360
508-746-6060

448 N. Falmouth Highway
North Falmouth, MA 02556
508-563-2183

Marine Division:
25 Union Street
Plymouth, MA 02360

PROJECT #	
-----------	--

PROJECT:

**DEFINITIVE
SITE PLAN**

2053, 2055, 2057 & 2103
WASHINGTON STREET
HANOVER, MASSACHUSETTS

CLIENT:
2103 WASHINGTON ST LLC
552 ADAMS STREET
MILTON, MA 02186
(781) 982-1144

DRAWING PATH:
H:\22-188\DESIGN\22-188 GR.DWG

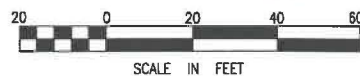
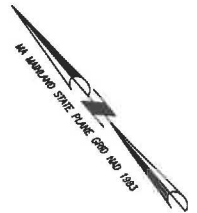
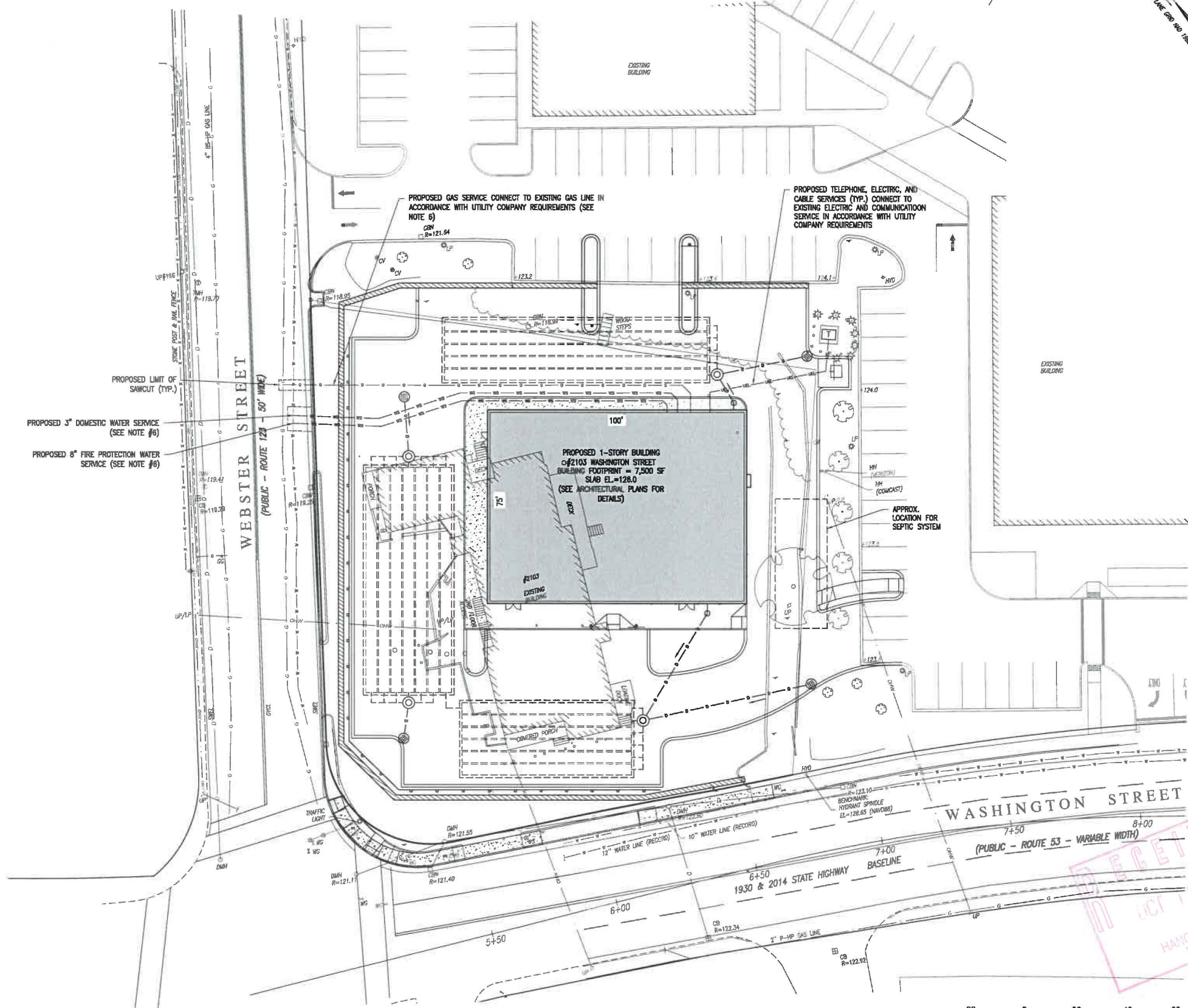
DATE:
OCTOBER 16, 2023

GRADING AND DRAINAGE PLAN

C6.1
© Merrill Corporation

UTILITY NOTES:

- BACKFILL SHALL BE COMPACTED TO 95% MAXIMUM DRY DENSITY BY AASHTO T-1800 METHOD. SHEETING, IF USED, SHALL BE REMOVED PRIOR TO BACKFILLING TRENCH.
- UNSATURABLE SOIL BELOW THE INVERT SHALL BE REMOVED AND REPLACED WITH APPROVED MATERIAL AND SHALL NOT BE USED AS BACKFILL.
- ALL ROOF RUNOFF WILL BE DIRECTED TO RELATIVE INFILTRATION CHAMBERS.
- THE CONTRACTOR SHALL BE RESPONSIBLE FOR ESTABLISHING AND MAINTAINING ALL CONTROL POINTS AND BENCHMARKS NECESSARY FOR THE WORK.
- THE CONTRACTOR IS SPECIFICALLY CAUTIONED THAT THE LOCATION AND/OR ELEVATION OF EXISTING UTILITIES AND STRUCTURES AS SHOWN ON THESE PLANS IS BASED ON RECORDS OF VARIOUS UTILITY COMPANIES AND WHERE POSSIBLE, MEASUREMENTS TAKEN IN THE FIELD. THIS INFORMATION IS NOT TO BE RELIED UPON AS BEING EXACT OR COMPLETE. THE LOCATION OF ALL UNDERGROUND UTILITIES AND STRUCTURES SHALL BE VERIFIED IN THE FIELD BY THE CONTRACTOR PRIOR TO THE START OF CONSTRUCTION. THE CONTRACTOR MUST CONTACT THE APPROPRIATE UTILITY COMPANY, ANY GOVERNING PERMITTING AUTHORITY, AND "DIGSAFE" AT LEAST 72 HOURS PRIOR TO ANY EXCAVATION WORK TO REQUEST EXACT FIELD LOCATION OF UTILITIES AND THE ENGINEER SHALL BE NOTIFIED IN WRITING OF ANY UTILITIES INTERFERING WITH THE PROPOSED CONSTRUCTION AND APPROPRIATE REMEDIAL ACTION SHALL BE TAKEN BEFORE PROCEEDING WITH THE WORK. IT SHALL BE THE RESPONSIBILITY OF THE CONTRACTOR TO RELOCATE ALL EXISTING UTILITIES WHICH CONFLICT WITH THE PROPOSED IMPROVEMENTS SHOWN ON THE PLAN.
- FINAL SIZE, LOCATION AND MATERIAL OF GAS, DOMESTIC WATER, AND FIRE SERVICE TO BE DESIGNED BY THE MEP ENGINEER FOR THE BUILDING PRIOR TO CONSTRUCTION. THE PROPOSED GAS SERVICE LOCATION AND CAPACITY SHALL BE VERIFIED WITH THE GAS COMPANY. THE CONTRACTOR SHALL CONFIRM WITH THE GAS COMPANY THAT GAS LINE INSTALLATION SHALL BE BY THE LOCAL GAS COMPANY. THE CONTRACTOR SHALL GIVE THE GAS COMPANY ADVANCE NOTICE OF WHEN THE GAS LINE CAN BE INSTALLED. THE CONTRACTOR IS RESPONSIBLE FOR ALL EXCAVATION AND BACKFILL AND COMPACTION FOR THE GAS LINE.
- THE CONTRACTOR SHALL EXCAVATE THE TEST PITS IN THE LOCATION SHOWN ON THE PLAN PRIOR TO COMMENCING WORK TO VERIFY THE ELEVATIONS AND LOCATIONS OF EXISTING UTILITIES. THE CONTRACTOR SHALL PROVIDE THE OWNER AND ENGINEER WITH THE RESULTS PRIOR TO COMMENCING WORK.
- THE CONTRACTOR SHALL COORDINATE WITH THE ELECTRIC, CABLE, AND TELEPHONE COMPANIES TO VERIFY LOCATION, SIZE, AND TYPE OF SAID UTILITIES PRIOR TO CONSTRUCTION. THE CONTRACTOR SHALL GIVE SAID UTILITY COMPANIES ADVANCE NOTICE OF WHEN UTILITY LINES WILL BE INSTALLED.
- ALL WATER MAINS SHALL BE INSTALLED WITH A MINIMUM OF 5 FEET OF COVER AND A MAXIMUM OF 6 FEET OF COVER EXCEPT AS NOTED OR DETAILED OTHERWISE. GREATER DEPTHS ARE PERMITTED WHERE REQUIRED TO AVOID CONFLICTS WITH OTHER UTILITIES.
- GENERALLY, WATER MAIN FITTINGS IDENTIFIED ON THIS DRAWING ARE SHOWN FOR INSTALLATION LOCATION PURPOSES. THE CONTRACTOR SHALL NOTE THAT NOT ALL FITTINGS ARE NOTED, SHOWN OR INDICATED.
- ALL WATER MAIN FITTINGS, TEES, HYDRANTS, ETC. SHALL BE RESTRAINED WITH CONCRETE THRUST BLOCKS.
- DOMESTIC WATER SERVICES 2.5" AND SMALLER SHALL BE TYPE K COPPER TUBING AND SHALL BE INSTALLED WITH APPROPRIATELY SIZED CORPORATION STOP WITH APPROVED SADDLE CURB STOP, AND BOX. DOMESTIC WATER SERVICES SHALL BE INSTALLED WITH APPROPRIATELY SIZED GATE, BOX AND TEE FITTINGS.
- ALL WATER MAINS 3" AND LARGER SHALL BE CEMENT LINED DUCTILE IRON - CLASS 52 AND SHALL BE INSTALLED WITH APPROPRIATELY SIZED FITTINGS AND GATE VALVES. ALL GATE VALVES SHALL BE MUELLER, OPEN LEFT.
- ALL WATER MAIN APPURTENANCES, MATERIALS, METHODS OF INSTALLATION AND TESTING REQUIREMENTS SHALL MEET OR EXCEED ALL LOCAL MUNICIPAL REQUIREMENTS.
- PRESSURE AND LEAKAGE TEST, DISINFECTION AND FLUSHING SHALL BE IN ACCORDANCE WITH ALL LOCAL MUNICIPAL STANDARDS AND REQUIREMENTS. CONTRACTOR SHALL BE RESPONSIBLE FOR ALL COSTS IN CONNECTION WITH UTILITY TESTS, FLUSHING AND INSPECTIONS AS REQUIRED BY THE LOCAL MUNICIPALITY.
- PRIMARY WATER METER AND BACKFLOW PREVENTER SHALL BE LOCATED AT THE POINT WHERE THE WATER LINE ENTERS EACH BUILDING UNLESS OTHERWISE NOTED OR DETAILED IN THE DRAWINGS.
- REFER TO THE WASTEWATER TREATMENT SYSTEM DESIGN PLANS FOR ALL GRAVITY SEWER CONNECTIONS. A: GRAVITY SANITARY SEWER PIPE SHALL BE POLYVINYL CHLORIDE PIPE (PVC) SDR 35 AND SHALL CONFORM WITH ASTM-D3034 UNLESS NOTED OTHERWISE.
- WHERE SANITARY SEWERS CROSS WATER MAINS, THE SEWER SHALL BE LAID AS SUCH AN ELEVATION THAT THE CROWN OF THE SEWER IS AT LEAST EIGHTEEN INCHES BELOW THE INVERT OF THE WATER MAIN. IF THE ELEVATION OF THE SEWER CANNOT BE VARIED TO MEET THIS REQUIREMENT, THE WATER MAIN SHALL BE RELOCATED TO PROVIDE THIS SEPARATION OR CONSTRUCTED WITH MECHANICAL JOINT PIPE FOR A DISTANCE OF TEN FEET ON EACH SIDE OF THE SEWER. ONE FULL LENGTH OF WATER MAIN SHALL BE CENTERED OVER THE SEWER SO THAT BOTH JOINTS WILL BE AS FAR FROM THE SEWER AS POSSIBLE. IF MECHANICAL JOINT PIPE IS NOT USED THEN BOTH WATER MAIN AND SANITARY SEWER SHALL BE ENCASED IN CONCRETE FOR A MINIMUM DISTANCE OF 10 FEET FROM THE CROSSING POINT OF THE OTHER PIPE AS MEASURED NORMALLY FROM ALL POINTS ALONG THE PIPE.
- DUE TO THE SMALL SCALE OF THE SITE WORK DRAWINGS, EXACT LOCATION OF UTILITY STUBS FOR BUILDING CONNECTIONS SHALL BE VERIFIED WITH THE ARCHITECTURAL DRAWINGS. SERVICE STUBS TO THE BUILDING SHALL BE INSTALLED TO A POINT 10 FEET FROM THE BUILDING WALL UNLESS OTHERWISE NOTED OR DETAILED.



merrillinc.com

REVISIONS:

NO.	DATE	DESCRIPTION

DRAWN BY:

NC

DESIGNED BY:

DWK

CHECKED BY:

DWK

SCALE:

1" = 20'

STAMP:



Merrill
Engineers and Land Surveyors

427 Columbia Road
Hanover, MA 02339
781-826-9200

40 Court Street, Suite 2A
Plymouth, MA 02360
508-746-6060

443 N. Falmouth Highway
North Falmouth, MA 02556
508-563-2183

Marine Division:
26 Union Street
Plymouth, MA 02360
508-746-6060

PROJECT #:

22-188

PROJECT:

**DEFINITIVE
SITE PLAN**

2053, 2055, 2057 & 2103
WASHINGTON STREET
HANOVER, MASSACHUSETTS

CLIENT:

2103 WASHINGTON ST LLC
552 ADAMS STREET
MILTON, MA 02186
(781) 982-1144

DRAWING PATH:

H:\22-188\DESIGN\22-188 1D, UT, LSC,
Planning.dwg

DATE:

OCTOBER 16, 2023

UTILITY PLAN

C7.1

© Merrill Corporation

Copyright © by Merrill Corporation. No part of this document may be reproduced, stored in a retrieval system, or transmitted in any form or by any means, electronic, mechanical, photocopying, recording or otherwise, without the express written consent of Merrill Corporation. The design, construction, and any modifications made to this document without the express written consent of Merrill Corporation shall render it unusable.

LANDSCAPE SCHEDULE:

KEY	BOTANICAL NAME	COMMON NAME	SIZE
DECIDUOUS TREES:			
HL	GLADSTIA TRIACANTHOS	HONEYLOCUST	3-5" CAL
RM	ACER RUBRUM	RED SUNSET MAPLE	3-5" CAL
SMAG	MAGNOLIA STELLATA	STAR MAGNOLIA	8-10' H

EVERGREEN SHRUBS:

AJ	JUNIPERUS HORIZONTALIS	ANDORRA JUNIPER	18-24"
DAV	THUJA OCCIDENTALIS	DARK AMERICAN ARBORVITAE	6-7'
ERC	JUNIPERUS VIRGINIANA	EASTERN RED CEDAR	7-8'
IG	ILEX GLABRA	SHAMROCK INKBERRY	3'
SGJ	JUNIPERUS CHINENSIS	SEA GREEN JUNIPER	3'
WBX	BUXUS	WINTERGEM BOXWOOD	3'

DECIDUOUS SHRUBS:

BAY	MYRICA PENSYLVANICUM	NORTHERN BAYBERRY	3'
CL	CLETHRA ALNIFOLIA	SWEET PEPPER	3'
POT	POTENTILLA	ABBOTSWOOD POTENTILLA	1.5-2'
RTD	CORNUS ALBA	VARIGATED RED TWIG DOGWOOD	3'
SYM	SYMPHORICARPOS ALBA	SNOWBERRY	3'
VIT	VIBURNUM TRILOBUM	CRANBERRYBUSH	3'

PERENIAL/GROUNDCOVERS:

BE	ARCTOSTAPHYLOS UVA	BEARBERRY	4" POT
SDY	MEEROCALLIS	STELLA D'ORO DAYLILY	1 GAL
V	VINCA MINOR	PERIWINKLE	4" POT

LANDSCAPE NOTES:

- ALL PLANT MATERIALS SHALL CONFORM TO THE MINIMUM GUIDELINES ESTABLISHED BY THE AMERICAN STANDARD FOR NURSERY STOCK PUBLISHED BY THE AMERICAN ASSOCIATION OF NURSERMEN, INC.
- ALL PLANTS SHALL BE NATIVE TO NEW ENGLAND AND HEALTHY, VIGOROUS, FREE OF DISEASE, INSECTS AND PESTS.
- PLANT VARIETIES ARE SUBJECT TO CHANGE DUE TO AVAILABILITY. COORDINATION WITH THE LANDSCAPE ARCHITECT FOR ALL PLANT VARIETY SUBSTITUTIONS.
- FINAL LANDSCAPE LAYOUT TO BE PREPARED BY A REGISTERED LANDSCAPE ARCHITECT.

COPYRIGHT © BY MERRILL CORPORATION
NO PART OF THIS DOCUMENT SHALL BE REPRODUCED, STORED IN A RETRIEVAL SYSTEM, OR TRANSMITTED IN ANY FORM OR BY ANY MEANS, ELECTRONIC, MECHANICAL, PHOTOCOPYING, RECORDING, OR BY ANY INFORMATION STORAGE AND RETRIEVAL SYSTEM, WITHOUT THE WRITTEN PERMISSION OF MERRILL CORPORATION. ANY VIOLATION OF THIS COPYRIGHT SHALL BE SUBJECT TO LEGAL ACTION.

PROPOSED EVERGREEN OR
DECIDUOUS SHRUBS (TYP.)PROPOSED PERENNIAL
GROUNDCOVERPROPOSED DECIDUOUS TREE
(TYP.)WEBSTER STREET
(PUBLIC - ROUTE 123 - 50' WIDE)

STONE POST & RAIL FENCE

PUBLIC

4" P-HP GAS LINE

PUBLIC

DRAIN

DRAIN

DRAIN

DRAIN

DRAIN

DRAIN

TRAFFIC LIGHT

TRAFFIC LIGHT

TRAFFIC LIGHT

TRAFFIC LIGHT

TRAFFIC LIGHT

TRAFFIC LIGHT

TRAFFIC LIGHT

TRAFFIC LIGHT

TRAFFIC LIGHT

TRAFFIC LIGHT

TRAFFIC LIGHT

TRAFFIC LIGHT

TRAFFIC LIGHT

TRAFFIC LIGHT

TRAFFIC LIGHT

TRAFFIC LIGHT

TRAFFIC LIGHT

TRAFFIC LIGHT

TRAFFIC LIGHT

TRAFFIC LIGHT

TRAFFIC LIGHT

TRAFFIC LIGHT

TRAFFIC LIGHT

TRAFFIC LIGHT

TRAFFIC LIGHT

TRAFFIC LIGHT

TRAFFIC LIGHT

TRAFFIC LIGHT

TRAFFIC LIGHT

TRAFFIC LIGHT

TRAFFIC LIGHT

TRAFFIC LIGHT

TRAFFIC LIGHT

TRAFFIC LIGHT

TRAFFIC LIGHT

TRAFFIC LIGHT

TRAFFIC LIGHT

TRAFFIC LIGHT

TRAFFIC LIGHT

TRAFFIC LIGHT

TRAFFIC LIGHT

TRAFFIC LIGHT

TRAFFIC LIGHT

TRAFFIC LIGHT

TRAFFIC LIGHT

TRAFFIC LIGHT

TRAFFIC LIGHT

TRAFFIC LIGHT

TRAFFIC LIGHT

TRAFFIC LIGHT

TRAFFIC LIGHT

TRAFFIC LIGHT

TRAFFIC LIGHT

TRAFFIC LIGHT

TRAFFIC LIGHT

TRAFFIC LIGHT

TRAFFIC LIGHT

TRAFFIC LIGHT

TRAFFIC LIGHT

TRAFFIC LIGHT

TRAFFIC LIGHT

TRAFFIC LIGHT

TRAFFIC LIGHT

TRAFFIC LIGHT

TRAFFIC LIGHT

TRAFFIC LIGHT

TRAFFIC LIGHT

TRAFFIC LIGHT

TRAFFIC LIGHT

TRAFFIC LIGHT

TRAFFIC LIGHT

TRAFFIC LIGHT

TRAFFIC LIGHT

TRAFFIC LIGHT

TRAFFIC LIGHT

TRAFFIC LIGHT

TRAFFIC LIGHT

TRAFFIC LIGHT

TRAFFIC LIGHT

TRAFFIC LIGHT

TRAFFIC LIGHT

TRAFFIC LIGHT

TRAFFIC LIGHT

TRAFFIC LIGHT

TRAFFIC LIGHT

TRAFFIC LIGHT

TRAFFIC LIGHT

TRAFFIC LIGHT

TRAFFIC LIGHT

TRAFFIC LIGHT

TRAFFIC LIGHT

TRAFFIC LIGHT

TRAFFIC LIGHT

TRAFFIC LIGHT

TRAFFIC LIGHT

TRAFFIC LIGHT

TRAFFIC LIGHT

TRAFFIC LIGHT

TRAFFIC LIGHT

TRAFFIC LIGHT

TRAFFIC LIGHT

TRAFFIC LIGHT

TRAFFIC LIGHT

TRAFFIC LIGHT

TRAFFIC LIGHT

TRAFFIC LIGHT

TRAFFIC LIGHT

TRAFFIC LIGHT

TRAFFIC LIGHT

TRAFFIC LIGHT

TRAFFIC LIGHT

TRAFFIC LIGHT

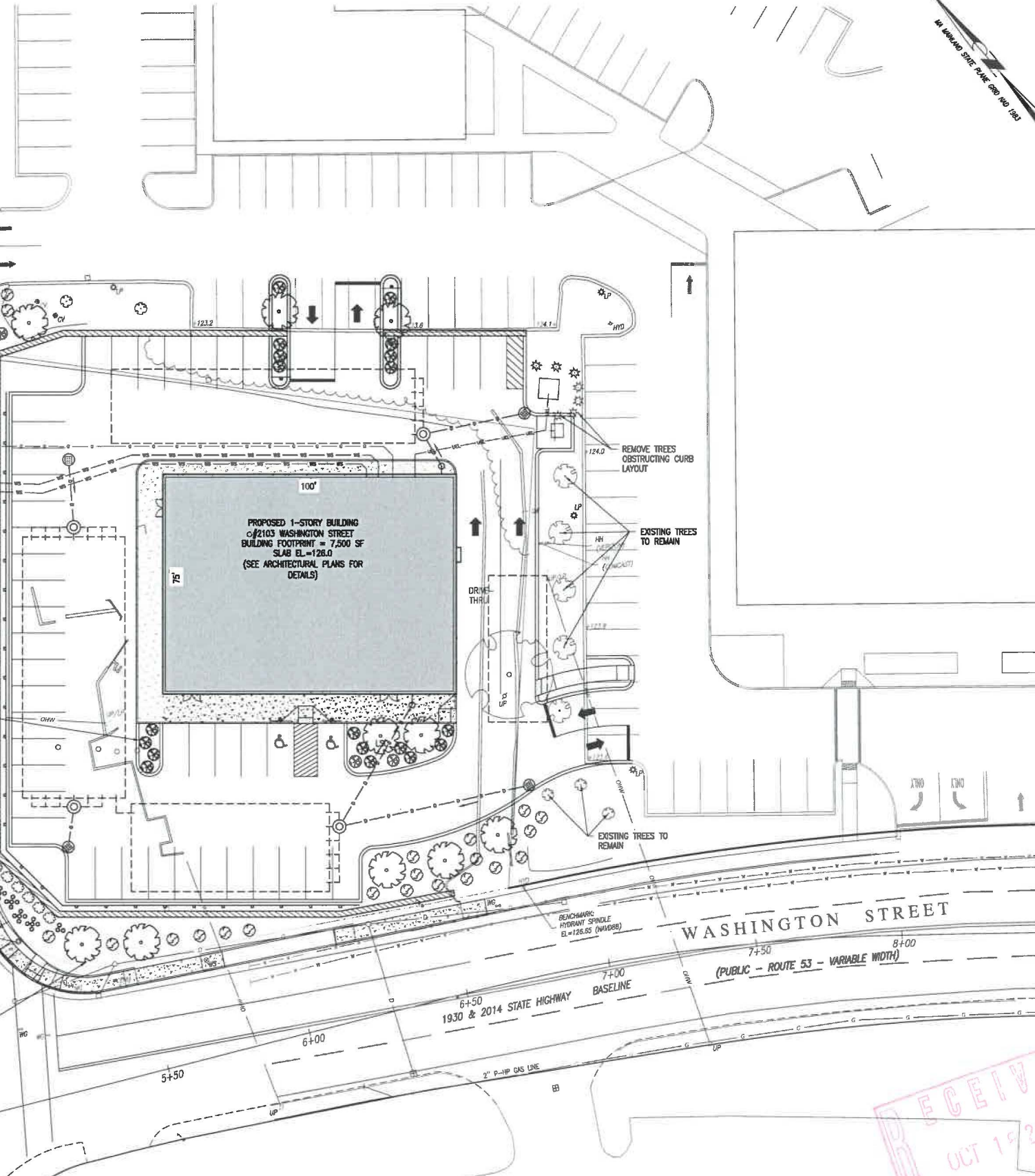
TRAFFIC LIGHT

TRAFFIC LIGHT

TRAFFIC LIGHT

TRAFFIC LIGHT

TRAFFIC LIGHT



merrillinc.com

REVISIONS:

DRAWN BY:

NC

DESIGNED BY:

DWK

CHECKED BY:

DWK

SCALE:

1" = 20'

STAMP:

427 Columbia Road
Hanover, MA 02339
781-826-920040 Court Street, Suite 2A
Plymouth, MA 02360
508-745-6060448 N. Falmouth Highway
North Falmouth, MA 02556
508-563-2183Marine Division:
26 Union Street
Plymouth, MA 02360
508-745-6060

PROJECT #:

22-188

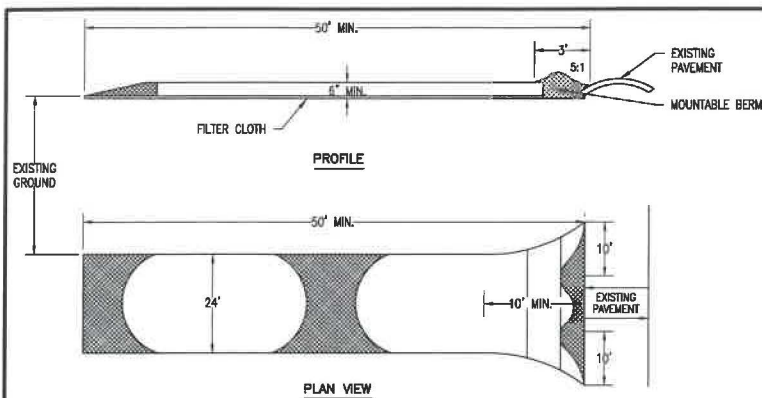
PROJECT:

DEFINITIVE
SITE PLAN2053, 2055, 2057 & 2103
WASHINGTON STREET
HANOVER, MASSACHUSETTSCLIENT:
2103 WASHINGTON ST LLC
552 ADAMS STREET
MILTON, MA 02186
(781) 982-1144DRAWING PATH:
H:\22-188\DESIGN\22-188 LO, VI, LSC,
ZONING.DWGDATE:
OCTOBER 16, 2023

LANDSCAPING PLAN

C8.1
© Merrill Corporation

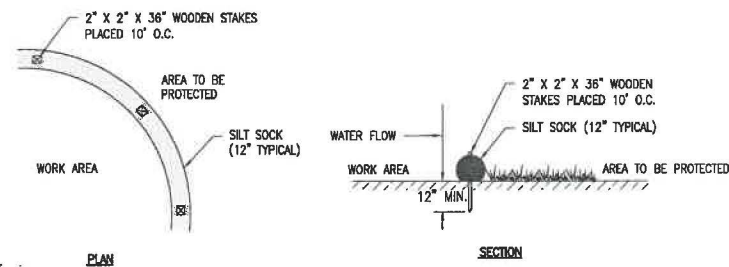
COPYRIGHT © BY MERRILL CORPORATION. NO PART OF THIS DOCUMENT MAY BE REPRODUCED, STORED IN A RETRIEVAL SYSTEM, OR TRANSMITTED IN ANY FORM OR BY ANY MEANS, ELECTRONIC, MECHANICAL, PHOTOCOPYING, RECORDING, OR BY ANY INFORMATION STORAGE AND RETRIEVAL SYSTEM, WITHOUT THE WRITTEN PERMISSION OF MERRILL CORPORATION. ANY VIOLATION OF THIS COPYRIGHT SHALL BE SUBJECT TO THE FULL ENFORCEMENT OF THE LAW. ANY UNAUTHORIZED USE OF THIS DOCUMENT SHALL BE SUBJECT TO THE FULL ENFORCEMENT OF THE LAW.



STABILIZED CONSTRUCTION ENTRANCE
(NOT TO SCALE)

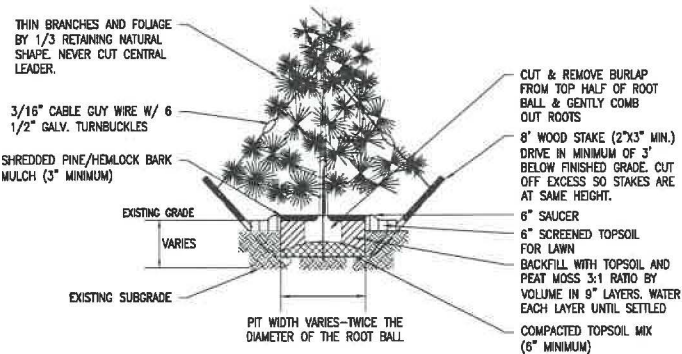
SPECIFICATIONS

1. STONE SIZE - USE 2" STONE, OR RECLAIMED OR RECYCLED CONCRETE EQUIVALENT.
2. LENGTH - AS REQUIRED, BUT NOT LESS THAN 50 FT.(EXCEPT ON A SINGLE RESIDENCE LOT WHERE A 30' MINIMUM LENGTH WOULD APPLY).
3. THICKNESS - NOT LESS THAN SIX (6) INCHES.
4. WIDTH - TEN (10) FOOT MINIMUM, BUT NOT LESS THAN THE FULL WIDTH AT POINTS WHERE INGRESS OR EGRESS OCCURS.
5. FILTER CLOTH - WILL BE PLACED OVER THE ENTIRE AREA PRIOR TO PLACING OF STONE. FILTER WILL NOT BE REQUIRED ON A SINGLE FAMILY RESIDENCE LOT.
6. SURFACE WATER - ALL SURFACE WATER FLOWING OR DIVERTED TOWARD CONSTRUCTION ENTRANCES SHALL BE PIPED ACROSS THE ENTRANCE. IF PIPING IS IMPRACTICAL, A MOUNTABLE BERM WITH 5:1 SLOPES WILL BE PERMITTED.
7. MAINTENANCE - THE ENTRANCE SHALL BE MAINTAINED IN A CONDITION WHICH WILL PREVENT TRACKING OR FLOWING OF SEDIMENT ONTO PUBLIC RIGHTS-OF-WAY. THIS MAY REQUIRE PERIODIC TOP DRESSING WITH ADDITIONAL STONE AS CONDITIONS DEMAND AND REPAIR AND/OR CLEANOUT OF ANY MEASURES USED TO TRAP SEDIMENT. ALL SEDIMENT SPILLED, DROPPED, WASHED OR TRACKED ONTO PUBLIC RIGHTS-OF-WAYS MUST BE REMOVED IMMEDIATELY.
8. WASHING - WHEELS SHALL BE CLEANED TO REMOVE SEDIMENT PRIOR TO ENTRANCE ONTO PUBLIC RIGHTS OF WAY. WHEN WASHING IS REQUIRED, IT SHALL BE DONE ON AN AREA STABILIZED WITH STONE AND WHICH DRAINS INTO AN APPROVED SEDIMENT TRAPPING DEVICE.
9. PERIODIC INSPECTION AND NEEDED MAINTENANCE SHALL BE PROVIDED AFTER EACH RAIN.

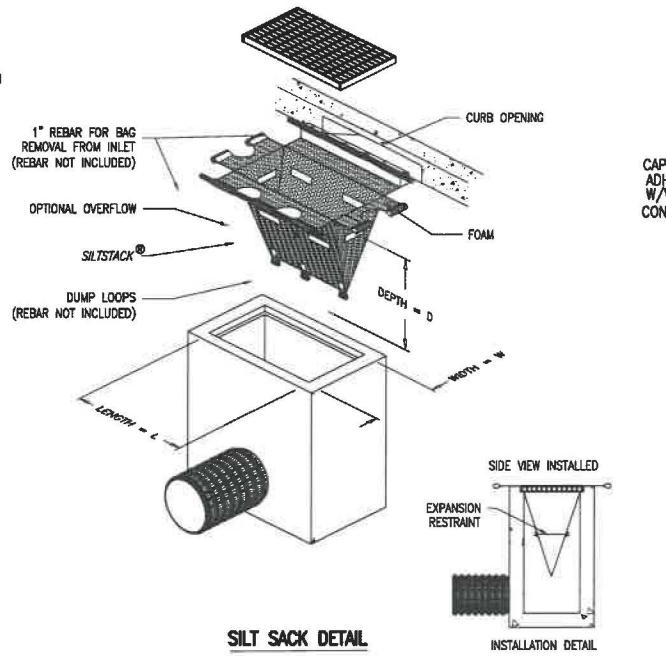


NOTE: REFER TO THE PLAN FOR PROPOSED LOCATION.

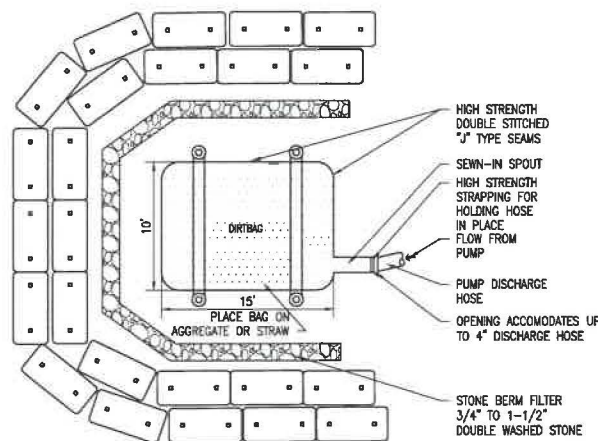
SILT SOCK DETAIL
(NOT TO SCALE)



EVERGREEN TREE PLANTING
(NOT TO SCALE)

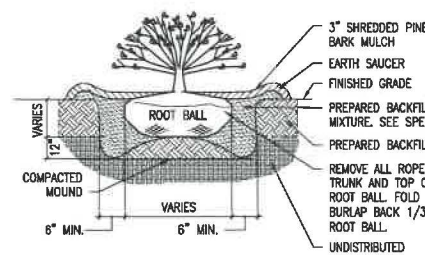


SILT SACK DETAIL
(NOT TO SCALE)



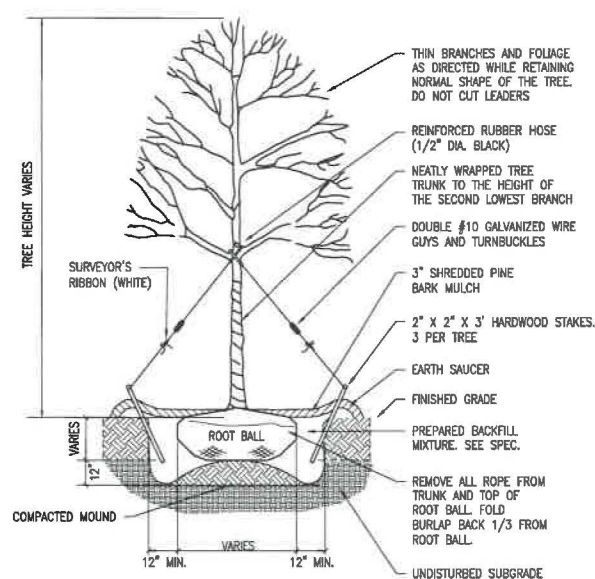
DIRTBAG DETAIL
(NOT TO SCALE)

NOTE: CONTRACTOR WILL KEEP A SUFFICIENT SUPPLY OF HAY BALES, CLEAN STONE AND DIRTBAGS TO ENSURE SITUATION IS CONTROLLED ON SITE. A MINIMUM OF TWO TIMES THE HAY BALES AND STONE ARE NEEDED AND FOUR DIRTBAGS WILL BE KEPT ON SITE.



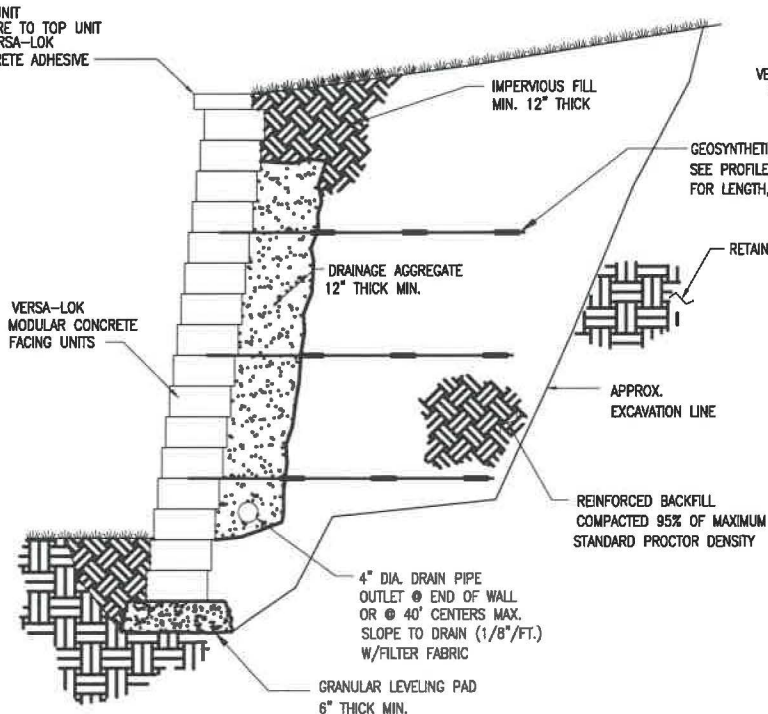
SHRUB PLANTING
(NOT TO SCALE)

- NOTES:
1. NO SOIL OR MULCH SHALL BE PLACED AGAINST ROOT COLLAR OF PLANT.
 2. PLANTING DEPTH SHALL BE THE SAME OR HIGHER AS GROWN IN NURSERY.

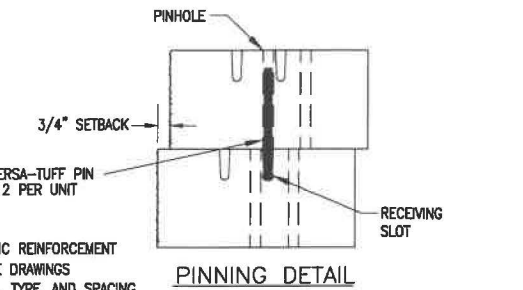


DECIDUOUS TREE PLANTING
(NOT TO SCALE)

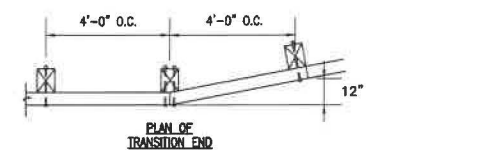
- NOTES:
1. NO SOIL OR MULCH SHALL BE PLACED AGAINST ROOT COLLAR OF PLANT.
 2. PLANTING DEPTH SHALL BE THE SAME OR HIGHER AS GROWN IN NURSERY.



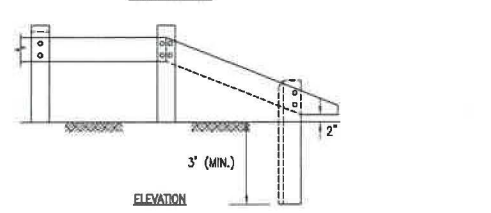
TYPICAL SECTION-REINFORCED RETAINING WALL
(NOT TO SCALE)



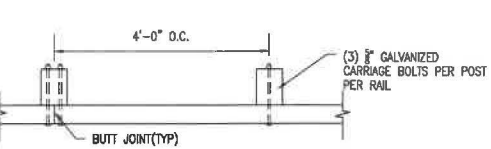
PINNING DETAIL



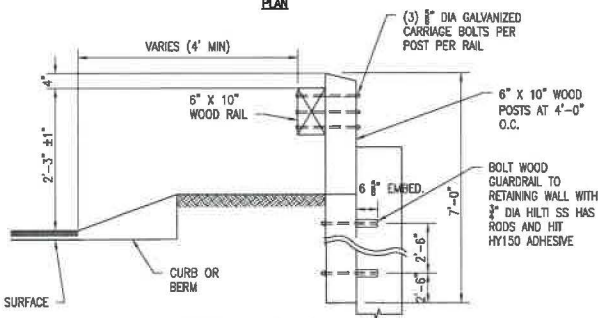
PLAN OF TRANSITION END



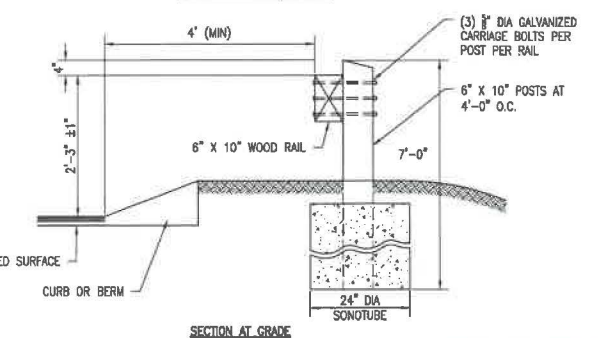
ELEVATION



BUTT JOINT(TYP)



SECTION AT RETAINING WALL



SECTION AT GRADE

- NOTES:
1. ALL RAIL AND POST SECTIONS TO BE PRESSURE TREATED #1 SOUTHERN YELLOW PINE OR EQUAL.
 2. BOLT CONNECTIONS TO BE DESIGNED BY A REGISTERED PROFESSIONAL STRUCTURAL ENGINEER PRIOR TO CONSTRUCTION.

WOOD GUARDRAIL DETAIL
(NOT TO SCALE)

merrillinc.com

REVISIONS:

DRAWN BY:

NC

DESIGNED BY:

DWK

CHECKED BY:

DWK

SCALE:

NOT TO SCALE

STAMP:



Merrill
Engineers and Land Surveyors

427 Columbia Road
Hanover, MA 02339
781-826-9200

40 Court Street, Suite 2A
Plymouth, MA 02360
508-746-6080

448 N. Falmouth Highway
North Falmouth, MA 02556
508-563-2183

Marine Division:
26 Union Street
Plymouth, MA 02360
508-746-6080

PROJECT #:

22-188

PROJECT:

DEFINITIVE SITE PLAN

2053, 2055, 2057 & 2103
WASHINGTON STREET
HANOVER, MASSACHUSETTS

CLIENT:
2103 WASHINGTON ST LLC
552 ADAMS STREET
MILTON, MA 02186
(781) 982-1144

DRAWING PATH:

H:\22-188\PROJECT\22-188 DET.DWG

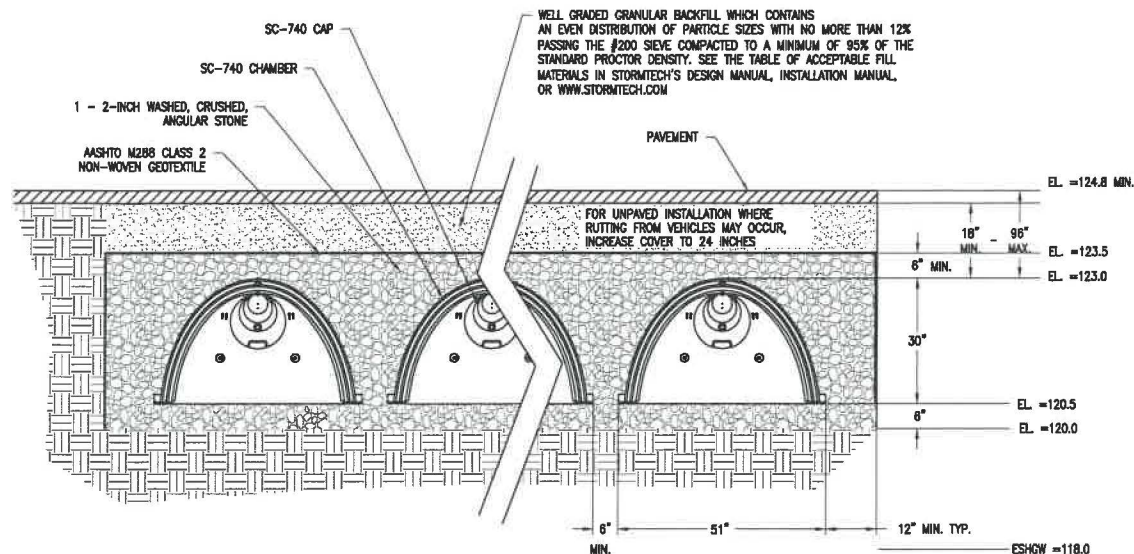
DATE:

OCTOBER 16, 2023

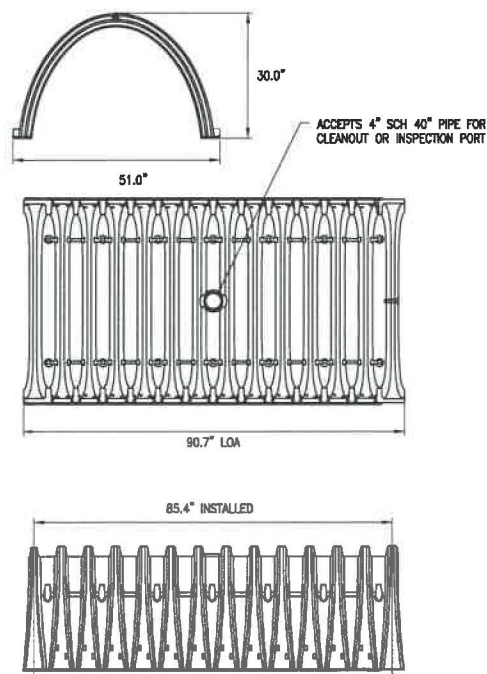
CONSTRUCTION DETAILS

C9.2

© Merrill Corporation



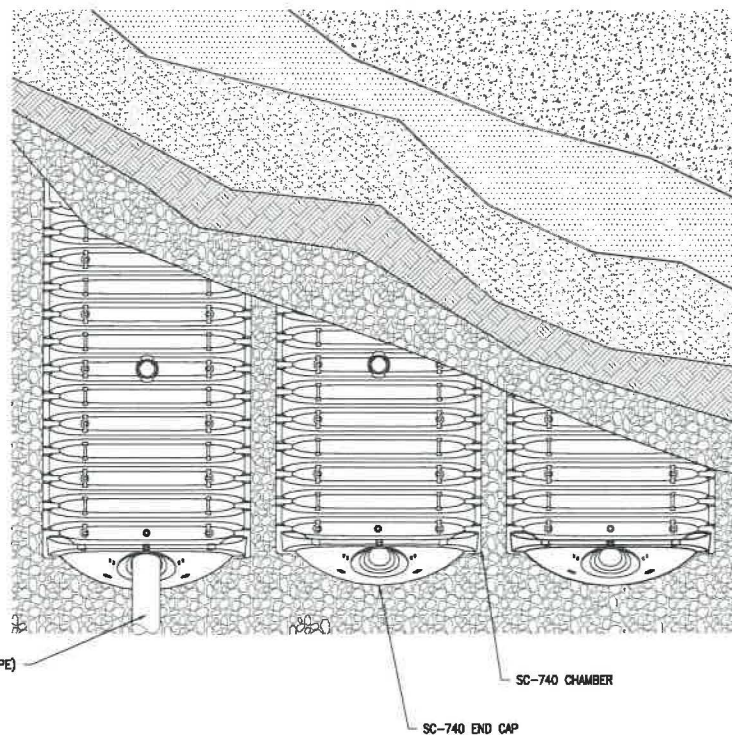
STORMTECH SC-740 CHAMBER SYSTEM
CROSS SECTION DETAIL
(NOT TO SCALE)



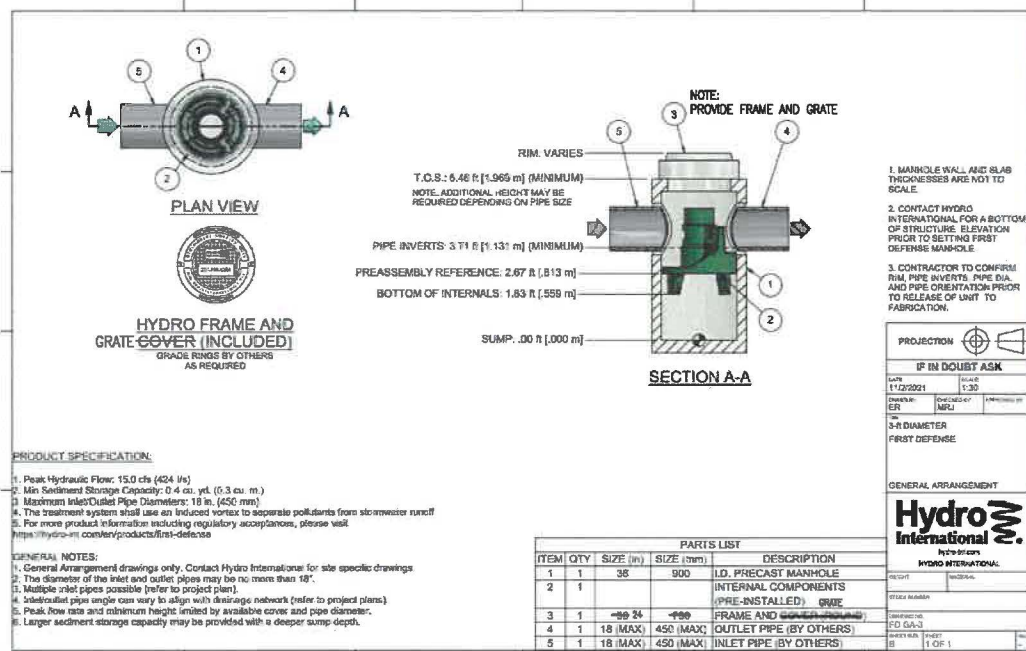
STORMTECH SC-740 CHAMBER
(NOT TO SCALE)

NOMINAL CHAMBER SPECIFICATIONS
SIZE (W x H x INSTALLED LENGTH)
CHAMBER STORAGE
MINIMUM INSTALLED STORAGE
WEIGHT

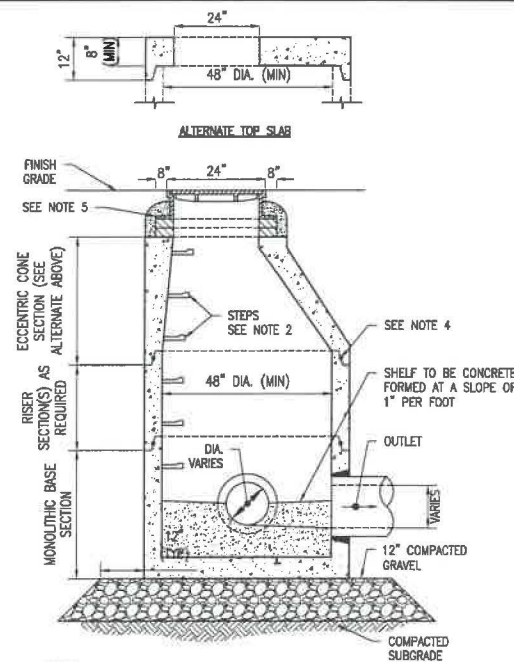
51.0" x 30.0" x 85.4"
45.9 CUBIC FEET
74.9 CUBIC FEET
75 LBS.



STORMTECH SC-740 CHAMBER SYSTEM
PLAN VIEW DETAIL
(NOT TO SCALE)

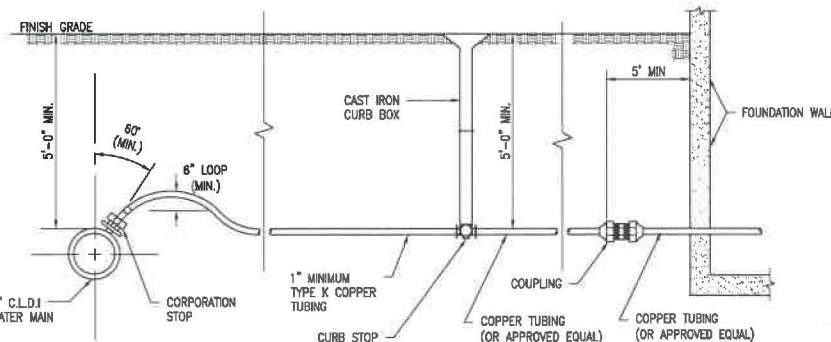


3-FT DIAMETER FIRST DEFENSE UNIT
(NOT TO SCALE)



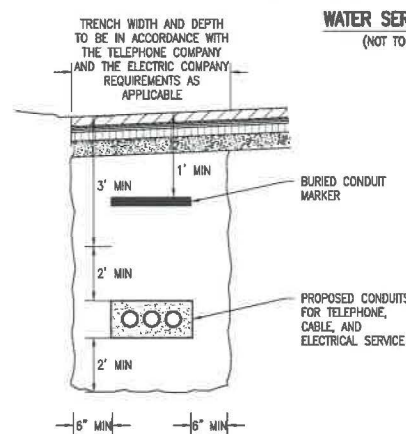
- NOTES:**
- ALL SECTIONS SHALL BE DESIGNED FOR HS-20 LOADING.
 - COPOLYMER MANHOLE STEPS SHALL BE INSTALLED AT 12" O.C. FOR THE FULL DEPTH OF THE STRUCTURE.
 - PROVIDE "V" KNOCKOUTS FOR PIPES WITH 2" MAX. CLEARANCE TO OUTSIDE OF PIPE. MORTAR ALL PIPE CONNECTIONS.
 - JOINT SEALANT BETWEEN PRECAST SECTIONS SHALL BE PREFORMED BUTYL RUBBER.
 - DRAIN MANHOLE FRAME AND GRATE SHALL BE SET IN FULL MORTAR BED. ADJUST TO GRADE WITH CLAY BRICK AND MORTAR. (2 BRICK COURSES TYPICALLY, 5 BRICK COURSES MAXIMUM)

PRECAST CONCRETE MANHOLE DETAIL
(NOT TO SCALE)

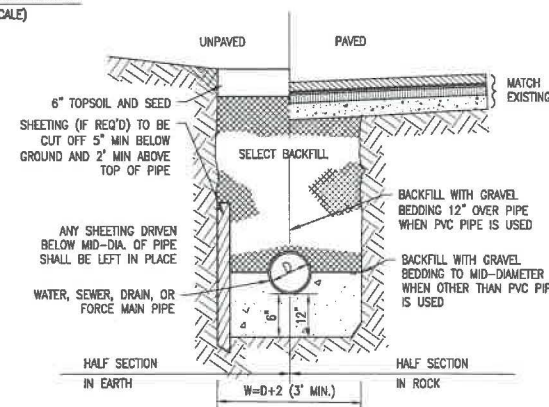


NOTE:
VERIFY MATERIALS AND TAPPING AND INSTALLATION REQUIREMENTS WITH THE TOWN WATER DEPARTMENT

WATER SERVICE DETAIL
(NOT TO SCALE)



TYPICAL ELECTRIC/TELEPHONE/CABLE CONDUIT (US-UTILITY SERVICE) DETAIL
(NOT TO SCALE)



TYPICAL UTILITY TRENCH
(NOT TO SCALE)

merrillinc.com

REVISIONS:

DRAWN BY:

NC

DESIGNED BY:

DWK

CHECKED BY:

DWK

SCALE:

NOT TO SCALE

STAMP:



Merrill
Engineers and Land Surveyors
427 Columbia Road
Haverhill, MA 02339
781-826-9200
40 Court Street, Suite 2A
Plymouth, MA 02360
508-746-6060
448 N. Falmouth Highway
North Falmouth, MA 02556
508-563-2183

Marine Division:
26 Union Street
Plymouth, MA 02360
508-746-6060

PROJECT #

22-188

PROJECT:

DEFINITIVE SITE PLAN

2053, 2055, 2057 & 2103
WASHINGTON STREET
HANOVER, MASSACHUSETTS

CLIENT:
2103 WASHINGTON ST LLC
552 ADAMS STREET
MILTON, MA 02186
(781) 982-1144

DRAWING PATH:

H:\22-188\DESIGN\22-188 DET.DWG

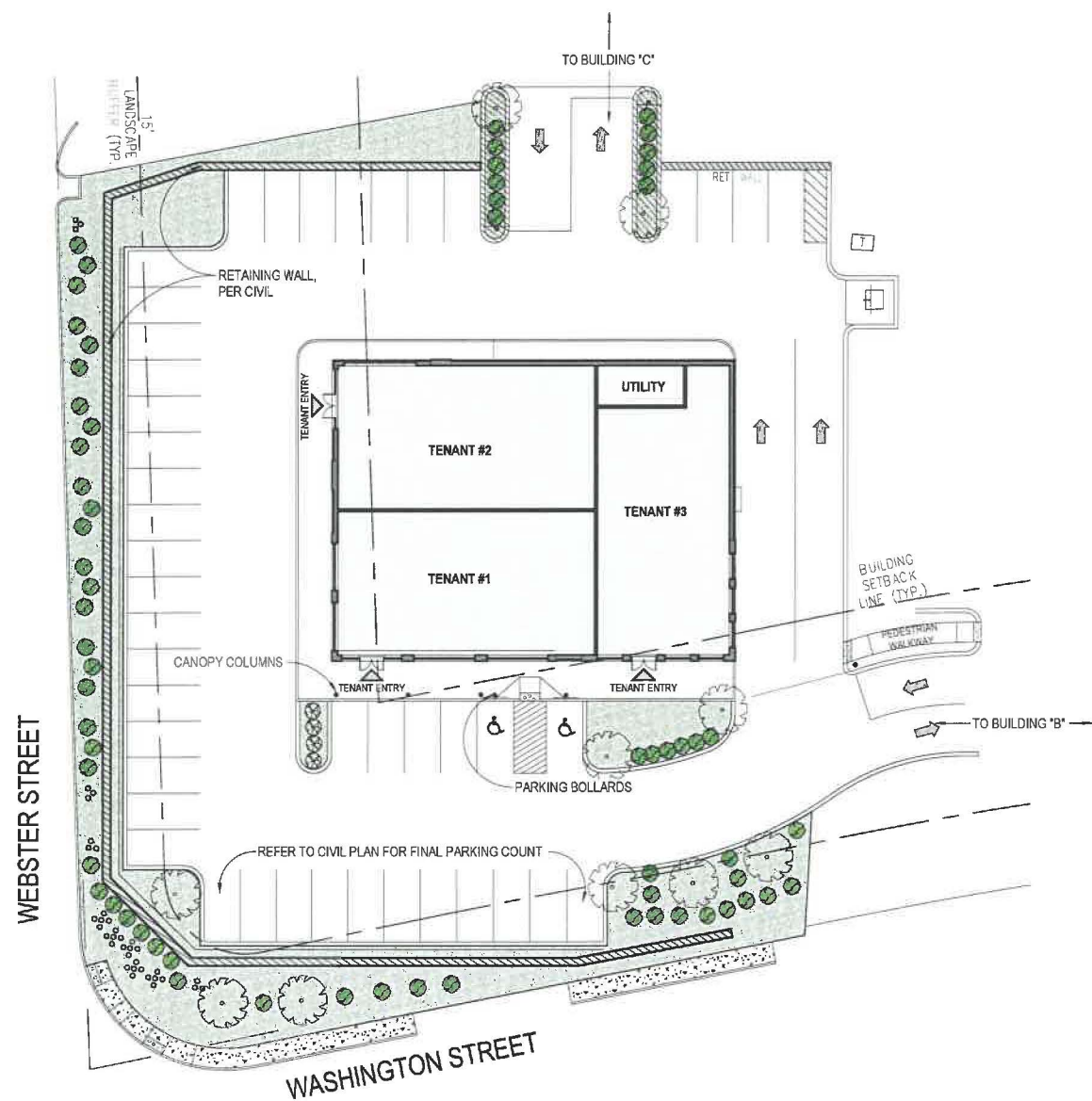
DATE:

OCTOBER 16, 2023

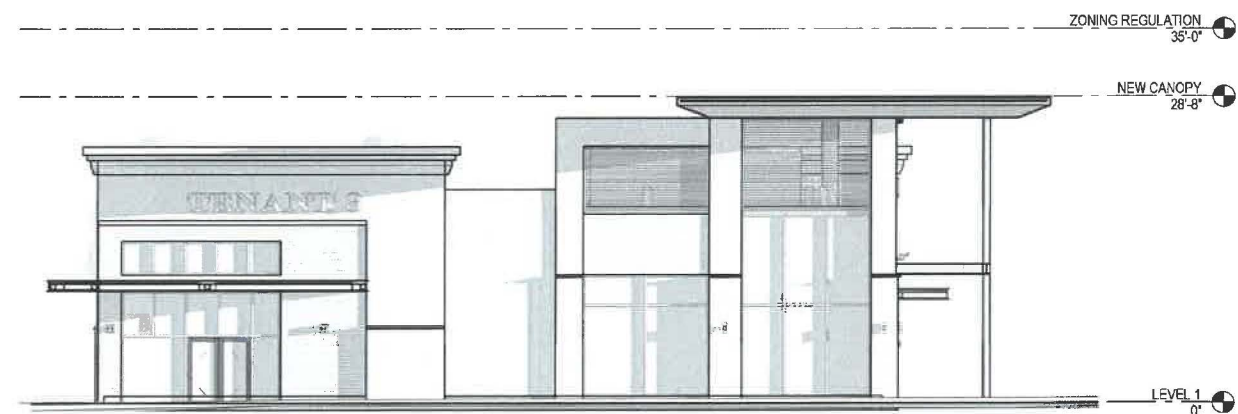
CONSTRUCTION DETAILS

C9.3

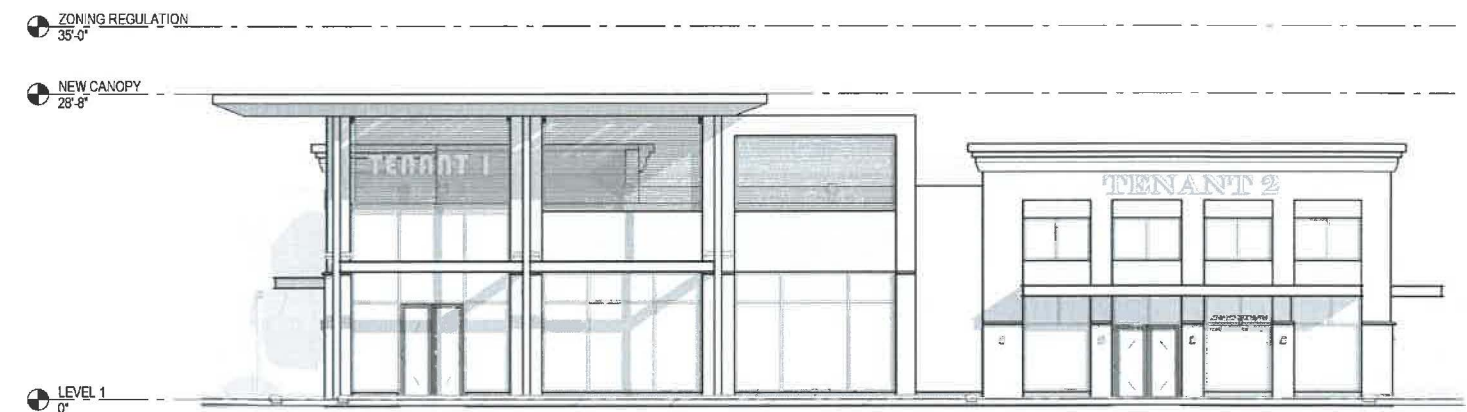
© Merrill Corporation



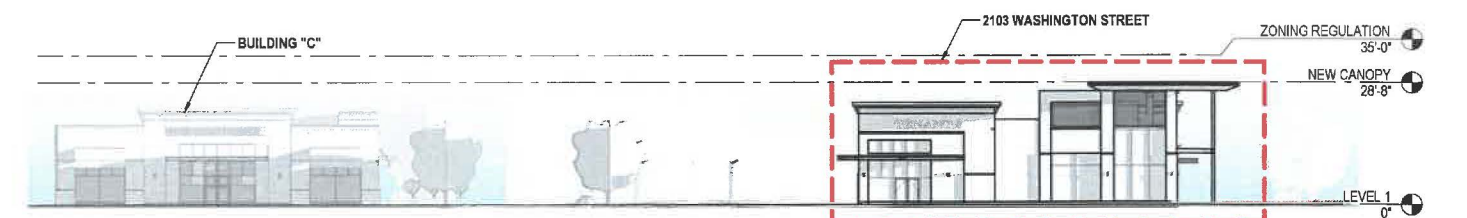
SITE - PROJECT NORTH
1" = 20'-0"



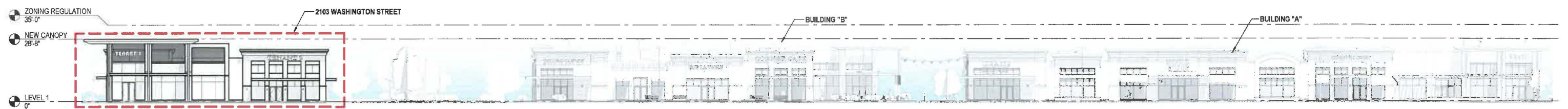
WEST ELEVATION
1/8" = 1'-0"



SOUTH ELEVATION
1/8" = 1'-0"



WEST ELEVATION - FULL CONTEXT
1" = 20'-0"



SOUTH ELEVATION - FULL CONTEXT
1" = 20'-0"







RECEIVED
OCT 15 2023
HANOVER CD/M
Planning