

Forge Pond Park Lighting Project

Article 30

Hanover Annual Town Meeting - 2023



Forge Pond Park Lighting Project

Project Scope

- ✓ LED Athletic Field Lighting
 - **ONE** Baseball Field and **ONE** Softball Field
 - ✓ Necessary/Appropriate Roadway Lighting
 - ✓ Necessary/Appropriate Parking Area Lighting
 - ✓ Will Incorporate Adjacent Walkway Lighting
 - ✓ Will allow hard-wired electric to service *existing* Scoreboards
-
- *Lights will be manually operated*
 - *Per ZBA Approval, lights must be OFF at 10:00pm*

Forge Pond Park Lighting Project

Project aligned with Hanover Master Plan

- Goal 4 “Maintain and improve public access to conservation parcels and their recreational use.”
- Goal 6 “....repair and update existing sports fields.”
- *These goals deemed important to 92% of the respondents*

Increase Field Availability and Scheduling Options

- Adds flexibility to Baseball and Softball schedules which eases schedule conflicts for other sports and activities

Increased field usage demands now vs. 2014 when FPP was opened

- Youth Baseball and Softball
- Growing Men’s and Women’s Softball Program
- High School Athletics
- Increased Field Permits/Usage at Forge Pond Park....food trucks, etc.



Forge Pond Park Lighting Project

- Unanimously Approved by Zoning Board of Appeals
 - Public Hearing(s) and Site Visits
 - Engineered Plans
 - Geotechnical (Soil) Survey
 - Pole Locations – Fields, Roadway and Parking
 - Photometric Plans – Spill Over/Glare
 - Letters of Support submitted by multiple neighbors
- Approved by:
 - Community Preservation Committee
 - Conservation Commission
- Supported by Advisory Committee



Forge Pond Park Lighting Project

Item	Cost
Field Lighting and Controls	\$256,000
Parking Lighting and Controls	\$45,000
Electrical Equipment/Supplies	\$80,000
Conduit Trenching	\$30,000
Site Work/Excavating/Installation	\$70,000
Total	\$481,000

Forge Pond Park Lighting Project

Additional Budget Information

- Costs are Estimated but Verified by Vendor(s)
- Request is to utilize the Community Preservation Fund for this project
 - These funds can only be used for specific projects, by law
- National Grid/Other Incentives are Expected to be Available
- In-Kind Services, Fundraising and Grants Used Wherever Possible
- All planning work to date completed with Grant Funding
- \$12,000 CPC Appropriation from 2022 NOT used
 - Expected to be turned back in the future

Forge Pond Park Lighting Project

Future Costs?

Electrical Costs

- Estimated at NO MORE than \$10,000/year
 - Based on 4 hours/night EVERY night (365 nights)
 - Off-Set by HYAA, Program Permit/User Fees, etc.

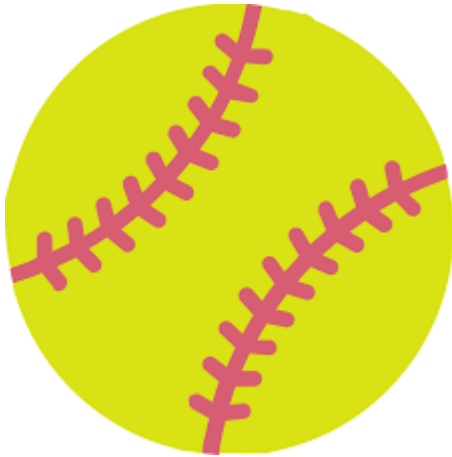
Maintenance Costs

- Minimal – LED is “gold standard”
- Maintenance Needs for HHS Lights are “Uncommon”

Future Expansion?

- Scope is ONE Baseball and ONE Softball (no longer a phased approach)
- ZBA Approval was all six fields
- Any future expansion will be financially driven AT THAT TIME

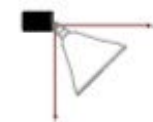
Thank You!



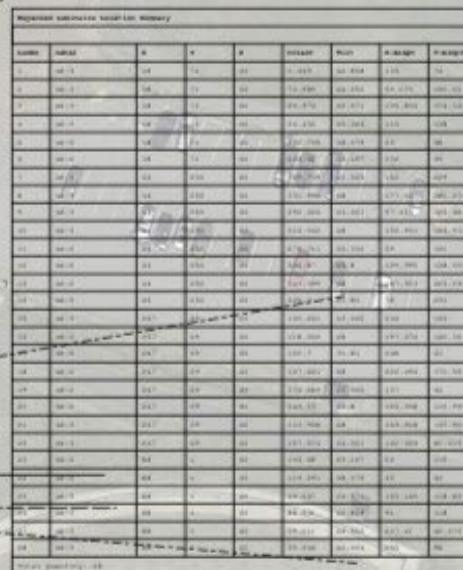


Information Summary		Information						
Project	Project ID	Name	Age	Sex	Race	Age/Mo	Height/In	Weight/Lb
Project 1	1000000001	Information	10	M	W	10/00	60.0	100.0
Project 2	1000000002	Information	10	M	W	10/00	60.0	100.0
Project 3	1000000003	Information	10	M	W	10/00	60.0	100.0

FPA - IF YOU HAVE AN EXTENDED INFELD OR SINGLINE, THE FPA AVERAGE SHOULD BE SIMILAR TO THE OUTLIER.



TILT OF FLOOD



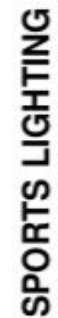
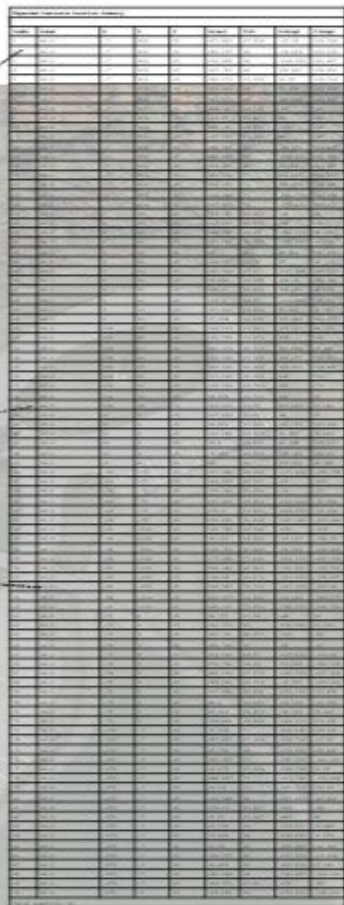
Sunday 5 October 2014



EPH
Forge Park
Fields

 $1'' = 30$

JR

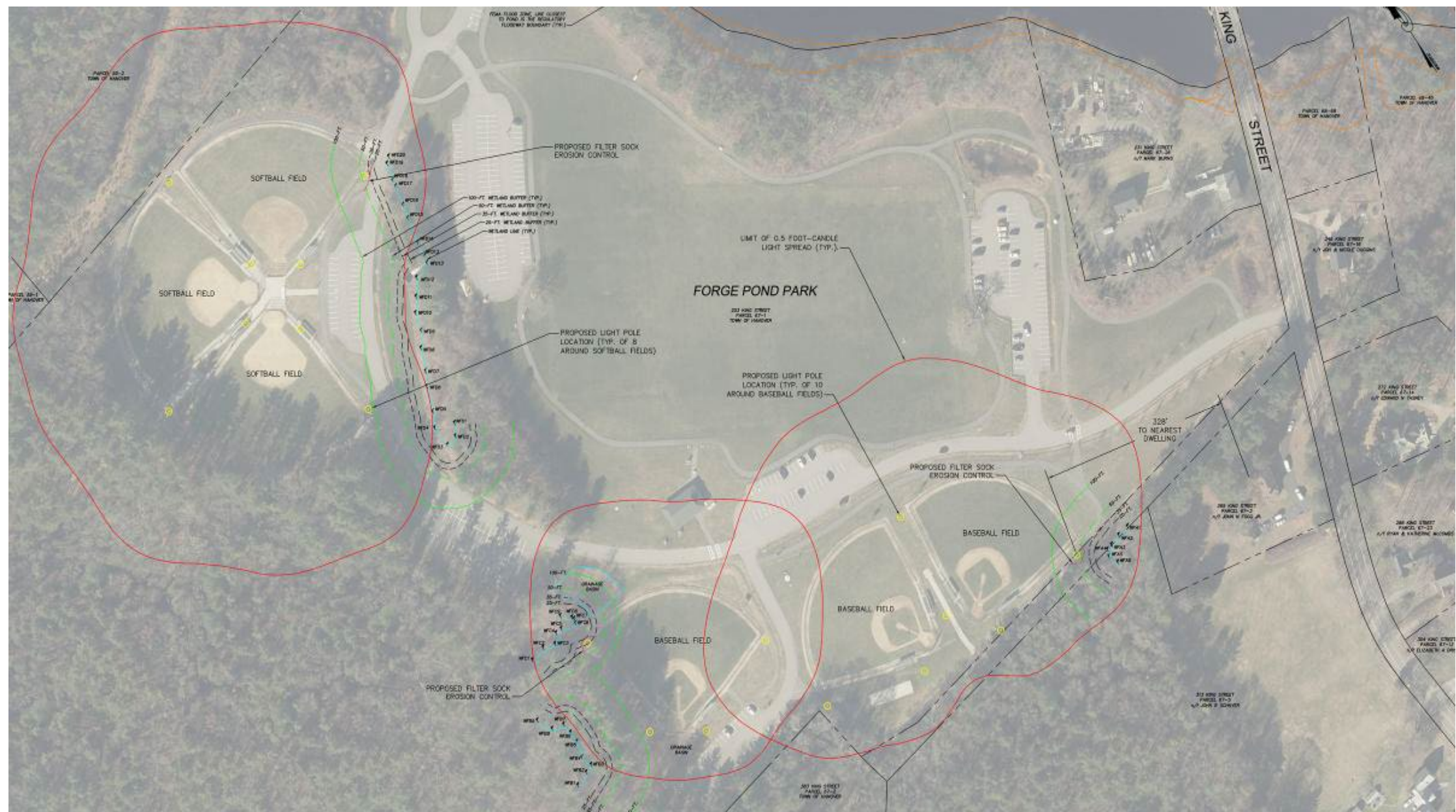
[illegible]

EPH
Forge Park
Fields

1/21/2022

 $\Gamma = 30$

JR





Luminaire Schedule					
Symbol	Qty	Label	Description	Tag	
	5	S1	LAS100S-T4-Switch-2	Lumark	
	13	S2	LAS45S-T4	Lumark	
	7	S1	LAS45S-T3	Lumark	

Calculation Summary						
Label	Units	Avg	Max	Min	Avg/Min	Max/Min
SITE Planar	Fc	0.26	8.9	0.0	N.A.	N.A.