



ssrcoop.info

Too bad for the trash?

Bring it to a

SOUTH SHORE RECYCLING COOPERATIVE

HOUSEHOLD HAZARDOUS WASTE COLLECTION

FALL 2021 9 am-1 pm

9/11 East Bridgewater, with **Abington, Hanson, & Whitman** NO LATEX PAINT

9/25 Braintree NO LATEX PAINT, copay required†

10/2 Hanover, with **Norwell & Rockland**
Usable latex paint accepted (see over)

10/30 Plymouth NO LATEX PAINT

11/6 Middleboro NO LATEX PAINT



11/13 Hull NO LATEX PAINT


Locations are revealed on the Registration Form, required for

ALL attendees. Scan QR code, (TBD) go to ssrcoop.info, or call 781.329.8318



† Ends at **noon**. Braintree residents need not register for this event. Cash copay for **ALL** attendees: \$5 - 50 based on amount.

☞ If you live in the **host/co-host** town , OR in a town listed  with a "□", just **register** and bring proof of residency.

☞ Visitors from the towns listed  with an "*" **NEED AN AUTHORIZATION FORM** from their town's DPW, or to bring a check. Subsidized quantities may be limited. **Registration** and proof of residency are also required.

☞ Visitors **not subsidized by their town ("†")** must **register** and bring a check to ACV Enviro. Cost is up to \$52 per 25 gallons if liquid (based on container size) or 25 lbs. if solid.

- | | |
|---------------------|--------------------|
| ABINGTON □ | NORWELL □ |
| BRAINTREE †† | PEMBROKE □ |
| COHASSET □ | PLYMOUTH □ |
| DUXBURY □ | ROCKLAND □ |
| EAST BRIDGE- | SCITUATE □ |
| WATER □ | WEYMOUTH □ |
| HANOVER* | WHITMAN □ |
| HANSON □ | * bring authori- |
| HINGHAM* | zation form or |
| HULL* | check to out of |
| KINGSTON* | town events |
| MIDDLEBORO* | †† bring check to |
| | out of town events |

**TO PROTECT STAFF & KEEP
LINE MOVING:**

- ✓ Bring items in labeled, closed containers.
- ✓ Box, **don't bag** materials.
- ✓ Place in **trunk / rear** of vehicle.
- ✓ Have **proof of residency, authorization if needed** or a **check to ACV Enviro ready**
- ✓ Follow CDC mask recommendations

Accepted at all events:

From the workbench:

oil based paint and stains *
hobby/artist supplies
photography chemicals
fiberglass resins
adhesives
solvents

From the garage:

flammable liquids and aerosols
gasoline, gas / oil mixtures
other automotive fluids*
tire and carburetor cleaners, degreasers
marine and auto paints

From the shed:

pesticides, herbicides, fungicides
fertilizers containing pesticides
pool chemicals
cesspool cleaners
wood preservatives

From the house:

elemental mercury
mercury-containing products *
drain cleaners
moth balls and crystals
hazardous cleaners and polishes
poisons
acids and bases

Accepted at some events:

motor oil* antifreeze*
lead acid batteries * rechargeable batteries*
prescription medications *
compact & straight fluorescent tubes *
latex paint **
asbestos flares

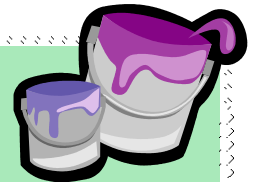
Asbestos and elemental mercury need special packaging. **CALL AHEAD 781.329.8318**

Materials not accepted include:

pressurized gas cylinders *
industrial waste
radioactive materials (*smoke detectors may be disposed in trash*)
pathological and medical waste
explosives (*contact your fire department*)

*** These materials are collected regularly by many retailers and/or towns**

**** Latex paint is messy, but not hazardous**



If your paint is still usable (stored indoors, smooth, not smelly), Recolor Paint will accept it at the Hanover HHW event. Recolor also recycles it into new paint at their Hanover facility. Fee: \$2/can.

Go to www.RecolorPaint.com or call **833.732.6567** for details.

If your paint's not that great: remove lid. Absorb liquid with cat litter or paint hardener, and dispose with trash.

For more info, go to ssrcoop.info, click on

Hazardous Waste Collection ▾

or call the South Shore Recycling Cooperative at **781.329.8318**