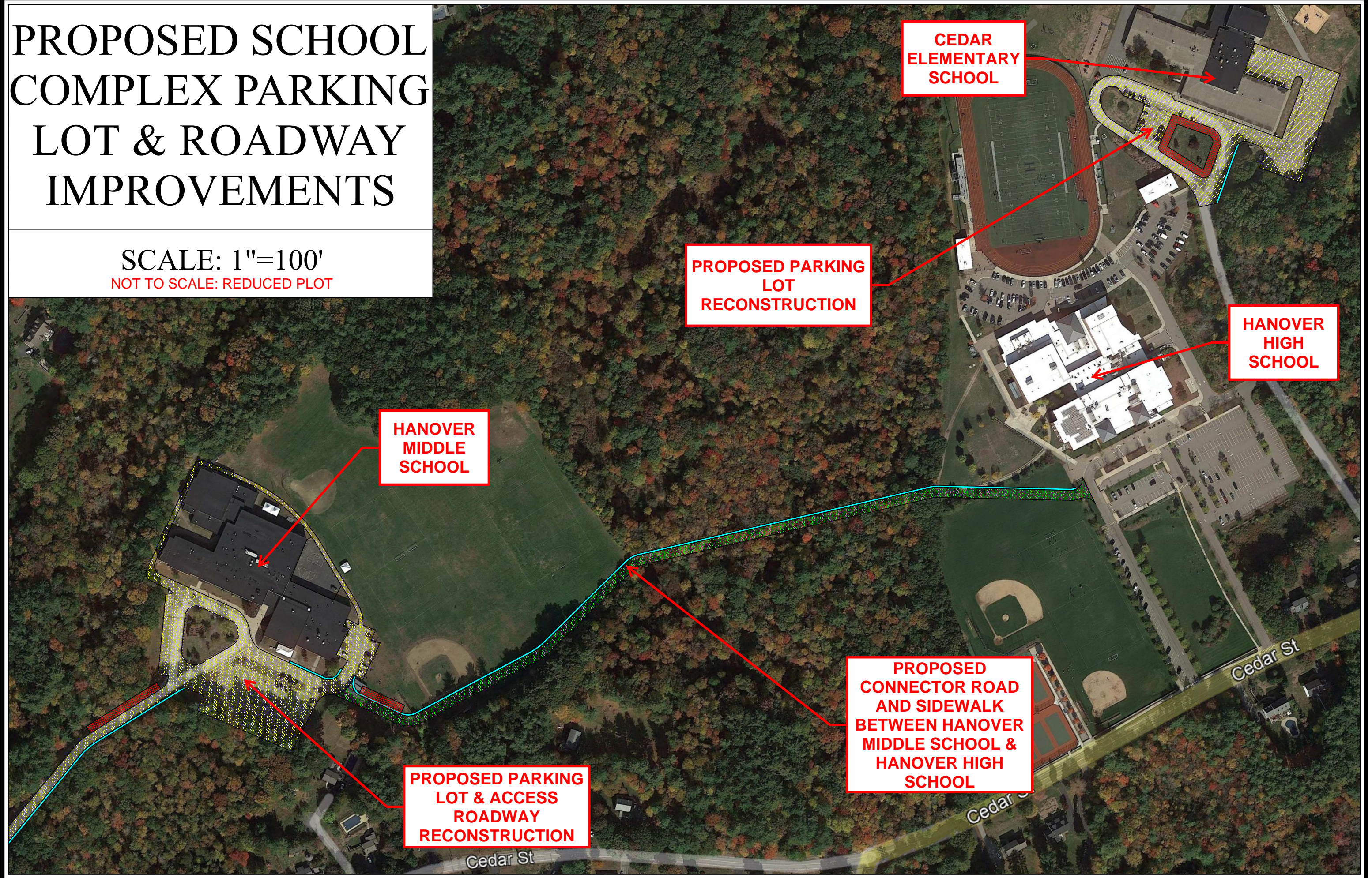


PROPOSED SCHOOL COMPLEX PARKING LOT & ROADWAY IMPROVEMENTS

SCALE: 1"=100'
NOT TO SCALE: REDUCED PLOT



CEDAR
ELEMENTARY
SCHOOL

PROPOSED PARKING
LOT
RECONSTRUCTION

HANOVER
HIGH
SCHOOL

HANOVER
MIDDLE
SCHOOL

PROPOSED
CONNECTOR ROAD
AND SIDEWALK
BETWEEN HANOVER
MIDDLE SCHOOL &
HANOVER HIGH
SCHOOL

PROPOSED PARKING
LOT & ACCESS
ROADWAY
RECONSTRUCTION

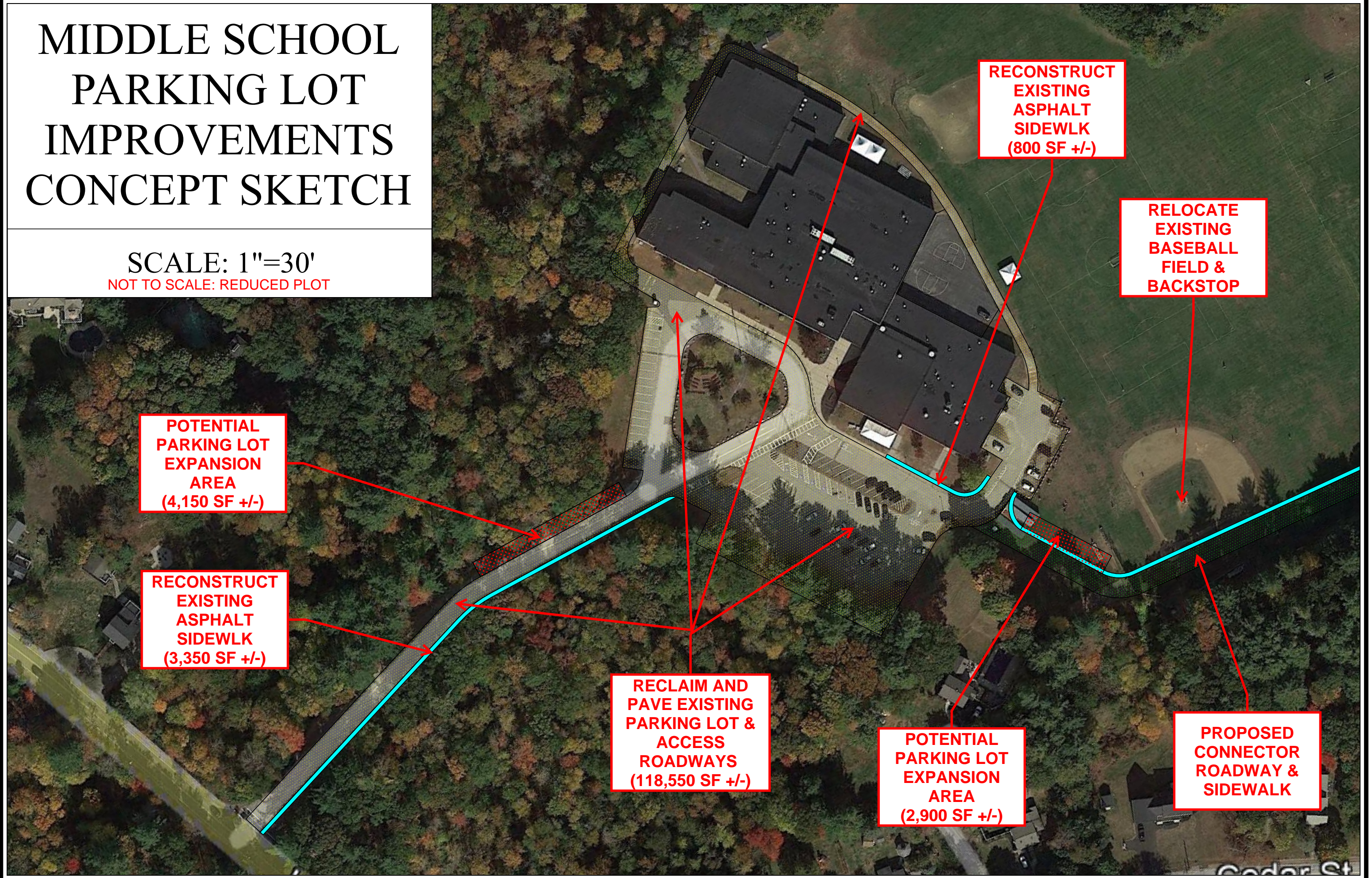
Cedar St

Cedar St

Cedar St

MIDDLE SCHOOL PARKING LOT IMPROVEMENTS CONCEPT SKETCH

SCALE: 1"=30'
NOT TO SCALE: REDUCED PLOT



RECONSTRUCT
EXISTING
ASPHALT
SIDEWALK
(800 SF +/-)

RELOCATE
EXISTING
BASEBALL
FIELD &
BACKSTOP

POTENTIAL
PARKING LOT
EXPANSION
AREA
(4,150 SF +/-)

RECONSTRUCT
EXISTING
ASPHALT
SIDEWALK
(3,350 SF +/-)

RECLAIM AND
PAVE EXISTING
PARKING LOT &
ACCESS
ROADWAYS
(118,550 SF +/-)

POTENTIAL
PARKING LOT
EXPANSION
AREA
(2,900 SF +/-)

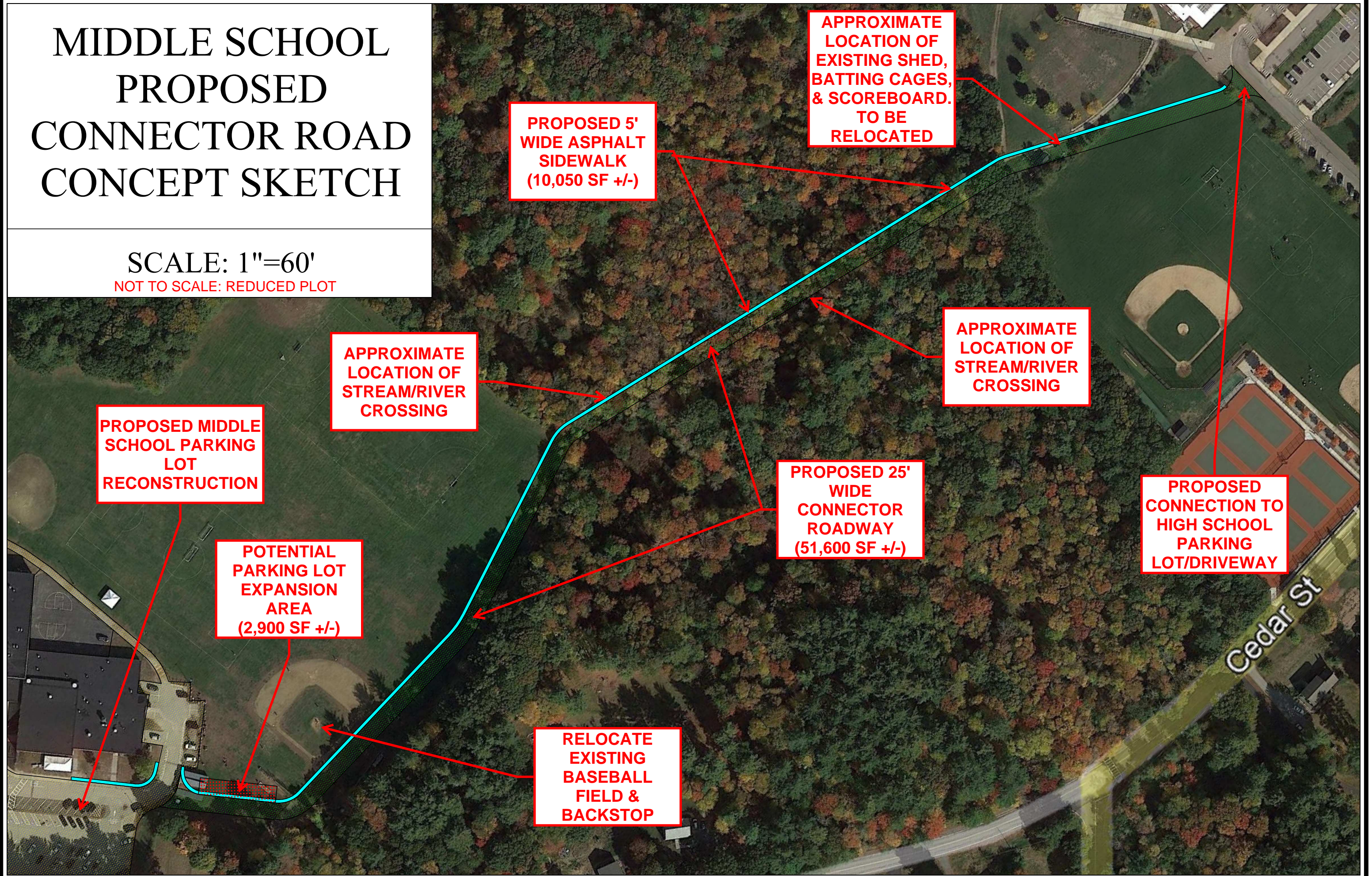
PROPOSED
CONNECTOR
ROADWAY &
SIDEWALK

Cedar St

MIDDLE SCHOOL PROPOSED CONNECTOR ROAD CONCEPT SKETCH

SCALE: 1"=60'

NOT TO SCALE: REDUCED PLOT



PROPOSED 5'
WIDE ASPHALT
SIDEWALK
(10,050 SF +/-)

APPROXIMATE
LOCATION OF
EXISTING SHED,
BATTING CAGES,
& SCOREBOARD.
TO BE
RELOCATED

APPROXIMATE
LOCATION OF
STREAM/RIVER
CROSSING

APPROXIMATE
LOCATION OF
STREAM/RIVER
CROSSING

PROPOSED MIDDLE
SCHOOL PARKING
LOT
RECONSTRUCTION

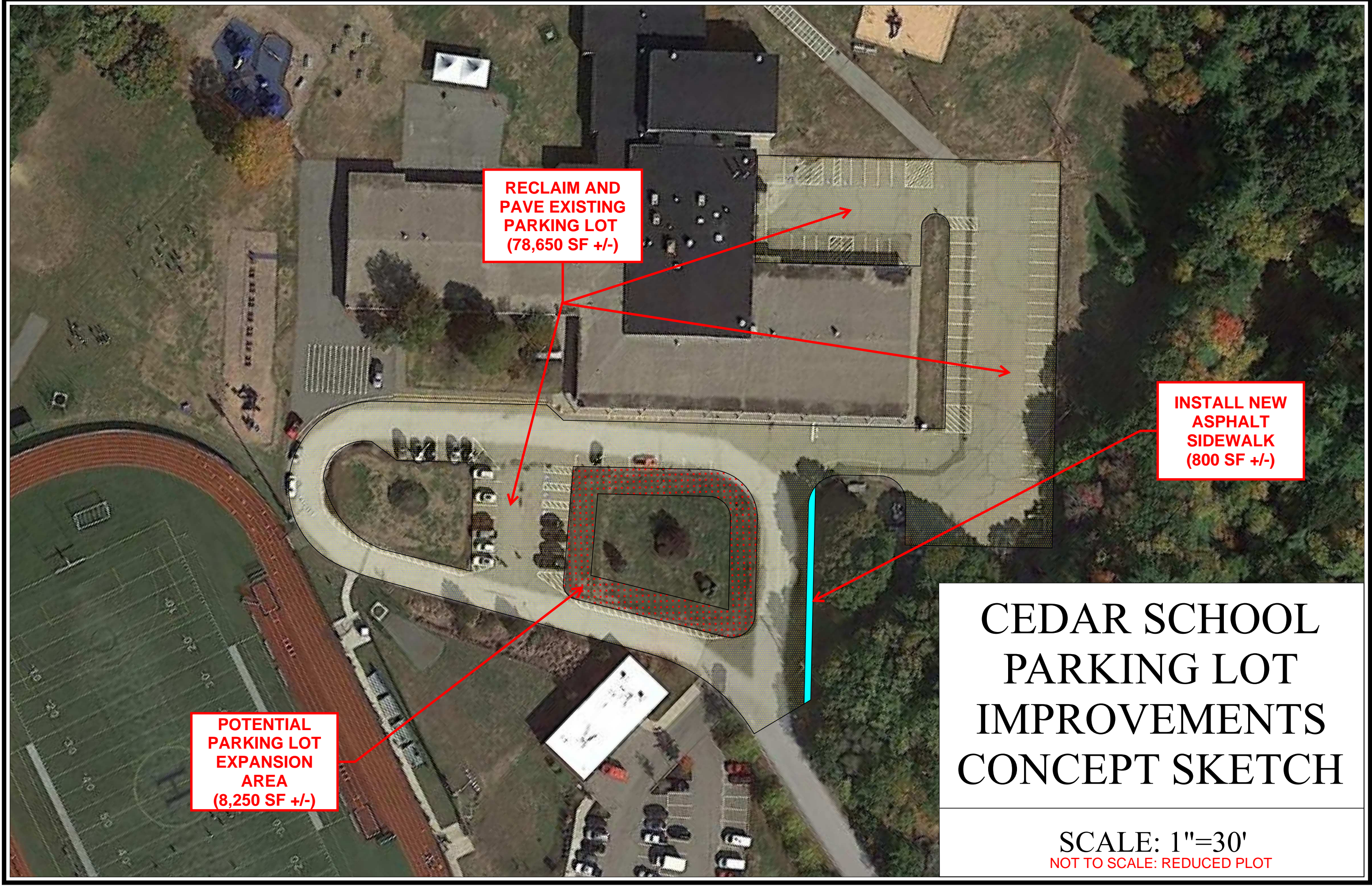
PROPOSED 25'
WIDE
CONNECTOR
ROADWAY
(51,600 SF +/-)

PROPOSED
CONNECTION TO
HIGH SCHOOL
PARKING
LOT/DRIVEWAY

POTENTIAL
PARKING LOT
EXPANSION
AREA
(2,900 SF +/-)

RELOCATE
EXISTING
BASEBALL
FIELD &
BACKSTOP

Cedar St



**RECLAIM AND
PAVE EXISTING
PARKING LOT
(78,650 SF +/-)**

**INSTALL NEW
ASPHALT
SIDEWALK
(800 SF +/-)**

**POTENTIAL
PARKING LOT
EXPANSION
AREA
(8,250 SF +/-)**

CEDAR SCHOOL PARKING LOT IMPROVEMENTS CONCEPT SKETCH

SCALE: 1"=30'
NOT TO SCALE: REDUCED PLOT