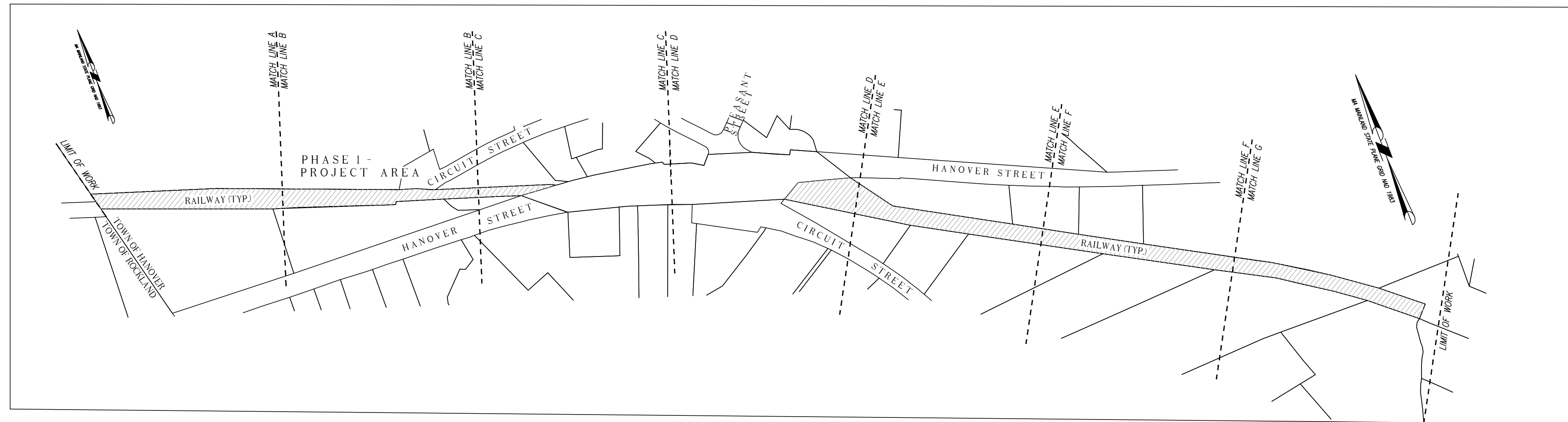
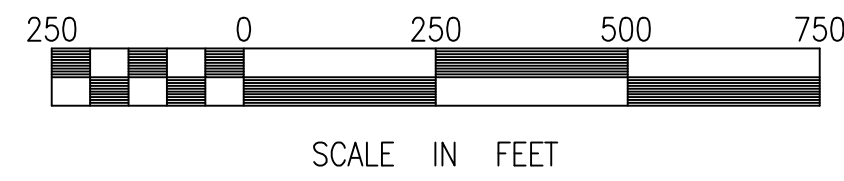


RECORD OWNER:

PARCEL ID: 43-64
 WEST HANOVER LOT 29
 COMMONWEALTH OF MASSACHUSETTS
 ON BEHALF OF THE DEPARTMENT OF
 CONSERVATION AND RECREATION
 ONE ASHBURTON PLACE
 BOSTON, MA 02108
 DEED BOOK 35155 PAGE 120
 PLAN #655 OF 2007,
 BOOK 53 PAGE 670-685



KEY PLAN



LEGEND

—○—○—○—○—○—○—	POST AND RAIL FENCE
---	CONTOUR LINE
---	LANDSCAPE AREA
---	EDGE OF POND
---	WATERMAIN
CB	CONCRETE BOUND FOUND
CB/DH	CONCRETE BOUND W/DRILL HOLE FOUND
MHB	MASS. HIGHWAY BOUND FOUND
SB	STONE BOUND FOUND
SB/DH	STONE BOUND W/DRILL HOLE FOUND
TBM	BENCHMARK
EHH	ELECTRIC HAND HOLE
HYD	FIRE HYDRANT
INV	INVERT
MH	MANHOLE (UNKNOWN)
SIGN	SIGN
WF	FLAGGED WETLAND LINE
TLP	TRAFFIC LIGHT POLE
WG	WATER GATE
---	LIMIT OF WETLAND RESOURCE AREA
---	35' WETLAND BUFFER ZONE
---	100' WETLAND BUFFER ZONE
---	100' & 200' RIVERFRONT AREA
---	EROSION CONTROL BARRIER

NOTES:

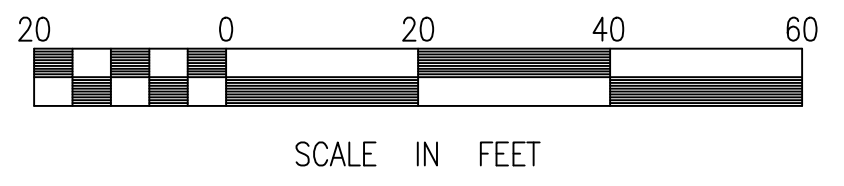
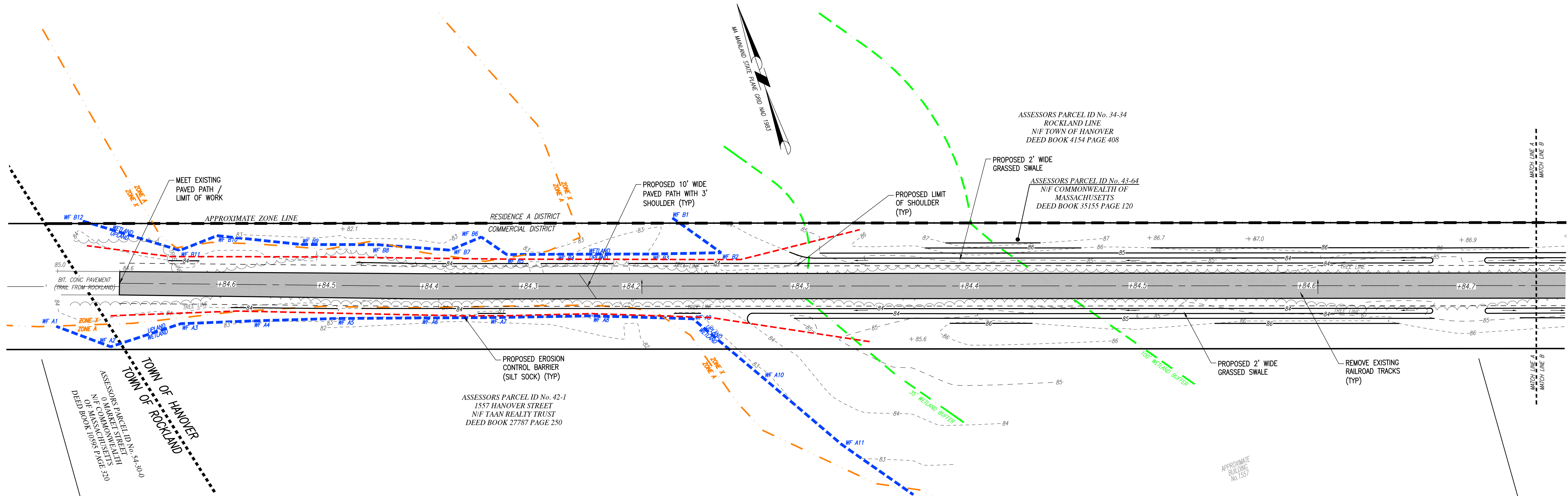
- PROPERTY LINE, STREET LINE AND OWNER INFORMATION WAS COMPILED FROM RECORDS ON FILE AT THE PLYMOUTH COUNTY REGISTRY OF DEEDS AND THE TOWN OF HANOVER ASSESSORS DEPARTMENT.
- TOPOGRAPHIC AND DETAIL INFORMATION SHOWN HEREON IS BASED UPON AN ON THE GROUND SURVEY PERFORMED BY MERRILL ENGINEERS AND LAND SURVEYORS DURING APRIL OF 2022.
- ALL ELEVATIONS ARE BASED ON THE NORTH AMERICAN VERTICAL DATUM OF 1988.
- WETLAND RESOURCE AREAS SHOWN ON THIS PLAN WERE DELINEATED BY ENVIRONMENTAL CONSULTING AND RESTORATION, LLC ON MARCH 31, 2022 AND FIELD LOCATED BY MERRILL ENGINEERS AND LAND SURVEYORS.
- PROJECT AREAS ARE IN THE "COMMERCIAL DISTRICT", "BUSINESS DISTRICT", "RESIDENCE A DISTRICT", "INDUSTRIAL DISTRICT", AND THE TELECOMMUNICATIONS OVERLAY DISTRICT AS DEPICTED ON THE TOWN OF HANOVER ZONING MAP.
- THE SUBJECT PARCEL SHOWN HEREON IS INTENDED TO REPRESENT THE LAND IN HANOVER, MA DEPICTED ON THE "MBTA LAND TRANSFER PLAN" DATED 9/06/06 AND FILED AS PLAN No. 655 OF 2007. ABUTTER SIDELINES WERE COMPILED FROM RECORD DATA.
- EXISTING UTILITIES, WHERE SHOWN, HAVE BEEN COMPILED BASED ON OBSERVED ABOVE GROUND EVIDENCE AND AVAILABLE RECORD PLANS AND ARE TO BE CONSIDERED APPROXIMATE. MERRILL ENGINEERS AND LAND SURVEYORS DOES NOT GUARANTEE THE LOCATION OF THE UNDERGROUND UTILITIES SHOWN OR THAT ALL EXISTING UTILITIES AND/OR SUBSURFACE STRUCTURES ARE SHOWN.

ENVIRONMENTAL NOTES:

- SITE IS NOT WITHIN AN A.C.E.C. (AREA OF CRITICAL ENVIRONMENTAL CONCERN).
- SITE IS NOT WITHIN AN AREA OF ESTIMATED HABITAT OF RARE WILDLIFE PER NHESP MAP AUGUST 1, 2021 "ESTIMATED HABITATS OF RARE WILDLIFE" FOR USE WITH THE MA WETLANDS PROTECTION ACT REGULATIONS (310 CMR 10)."
- SITE DOES NOT CONTAIN A CERTIFIED VERNAL POOL PER NHESP MAP AUGUST 1, 2021 "CERTIFIED VERNAL POOLS."
- SITE IS NOT WITHIN A PRIORITY HABITAT PER NHESP MAP AUGUST 1, 2021 "PRIORITY HABITATS OF RARE SPECIES" FOR SPECIES UNDER THE MASSACHUSETTS ENDANGERED SPECIES ACT, REGULATIONS (321 CMR10).
- SITE IS NOT LOCATED WITHIN A STATE APPROVED ZONE II GROUND WATER RECHARGE PROTECTION AREA.

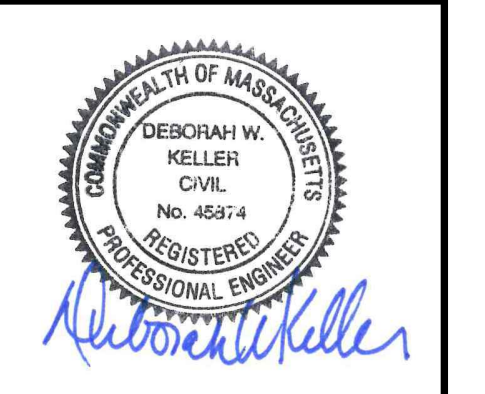
FLOOD NOTE:

BY GRAPHIC PLOTTING ONLY, PORTIONS OF THIS PROJECT ARE LOCATED IN ZONE X, ZONE AE, AND ZONE A OF THE FLOOD INSURANCE RATE MAP, AS SHOWN ON COMMUNITY MAP No. 25023C0182K, WHICH BEARS AN EFFECTIVE DATE OF JULY 6, 2021, AND PORTIONS OF THIS PROJECT ARE IN A SPECIAL FLOOD HAZARD AREA.



COPYRIGHT © BY MERRILL CORPORATION
 NO PART OF THIS DOCUMENT MAY BE REPRODUCED, STORED IN A RETRIEVAL SYSTEM, OR TRANSMITTED IN ANY FORM OR BY ANY MEANS, ELECTRONIC, MECHANICAL, PHOTOCOPIING, RECORDING OR OTHERWISE, WITHOUT THE EXPRESS WRITTEN CONSENT OF MERRILL CORPORATION WITH THE EXCEPTION OF ANY REGULATORY AUTHORITY WHICH MAY REPRODUCE IT IN CONJUNCTION WITH THE PERFORMANCE OF OFFICIAL BUSINESS UNDER ITS JURISDICTION. ANY MODIFICATIONS MADE TO THIS DOCUMENT WITHOUT THE EXPRESS WRITTEN CONSENT OF MERRILL CORPORATION SHALL RENDER IT UNUSABLE.

REVISIONS



DRAWN BY: VC

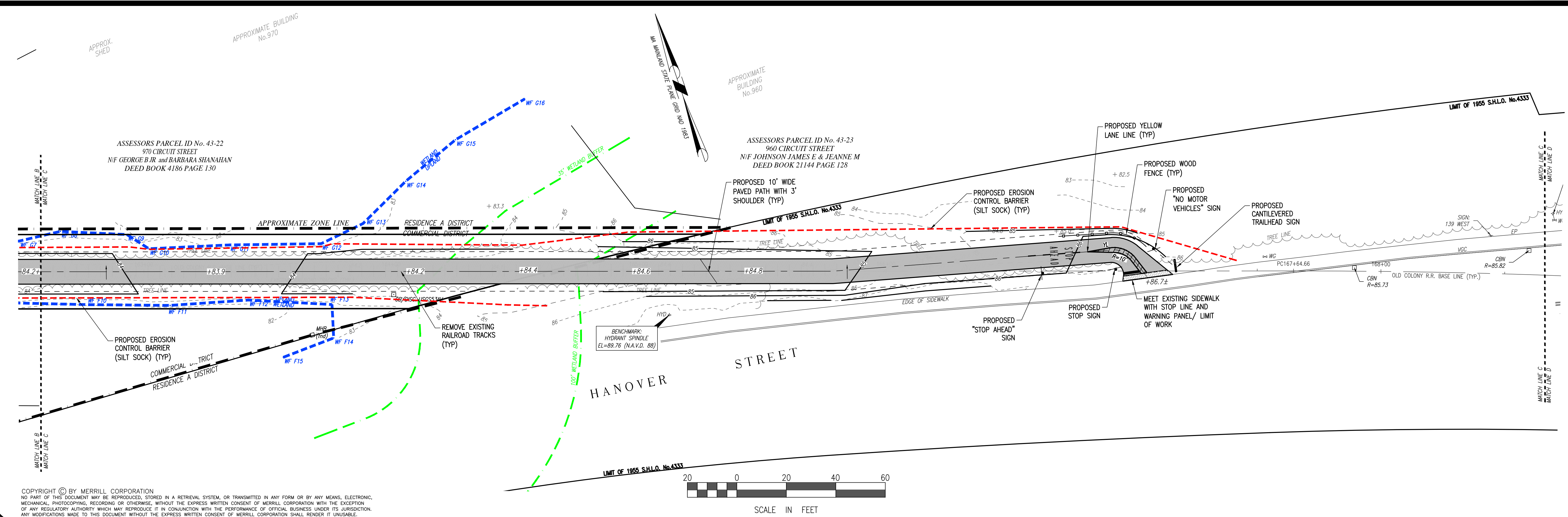
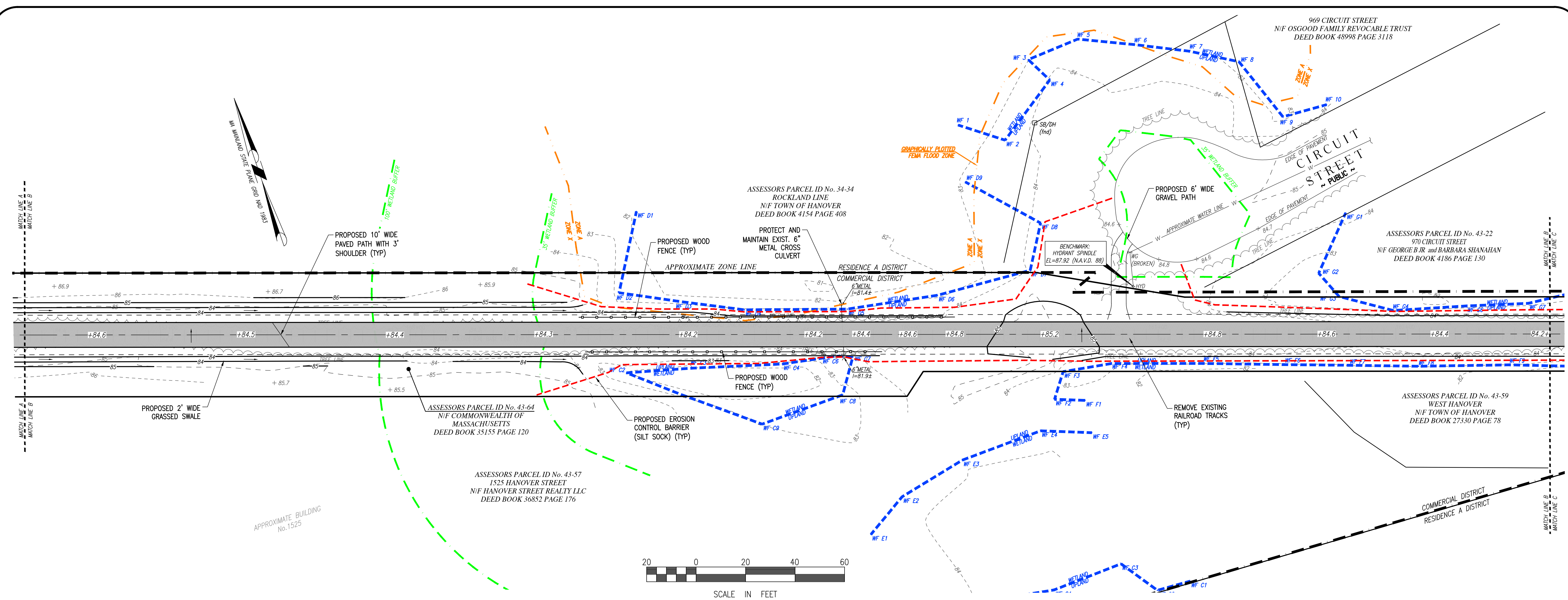
DESIGNED BY:

CHECKED BY: DK

Merrill
 Engineers and Land Surveyors
 427 COLUMBIA ROAD, HANOVER, MA 02339 / T: (781) 826-9200
 26 UNION STREET, PLYMOUTH MA 02360 / T: (508) 746-6060
 WWW.MERRILLINC.COM

SHARED USE PATH - PHASE 1
 HANOVER RAILS TO TRAILS
 HANOVER, MASSACHUSETTS
 OWNER/APPLICANT
 TOWN OF HANOVER, DEPARTMENT OF PUBLIC WORKS
 40 POND STREET
 HANOVER, MASSACHUSETTS 02339

AUGUST 26, 2022
 SCALE: 1"=20'
 JOB NO. 20-055
 LATEST REVISION:



COPYRIGHT © BY MERRILL CORPORATION
NO PART OF THIS DOCUMENT MAY BE REPRODUCED, STORED IN A RETRIEVAL SYSTEM, OR TRANSMITTED IN ANY FORM OR BY ANY MEANS, ELECTRONIC, MECHANICAL, PHOTOCOPIING, RECORDING OR OTHERWISE, WITHOUT THE EXPRESS WRITTEN CONSENT OF MERRILL CORPORATION WITH THE EXCEPTION OF ANY REGULATORY AUTHORITY WHICH MAY REPRODUCE IT IN CONJUNCTION WITH THE PERFORMANCE OF OFFICIAL BUSINESS UNDER ITS JURISDICTION. ANY MODIFICATIONS MADE TO THIS DOCUMENT WITHOUT THE EXPRESS WRITTEN CONSENT OF MERRILL CORPORATION SHALL RENDER IT UNUSABLE.

REVISIONS

DEBORAH W. KELLER
CIVIL ENGINEER
NO. 48674
REGISTERED PROFESSIONAL ENGINEER

DRAWN BY: VC

DESIGNED BY:

CHECKED BY: DK

Merrill
Engineers and Land Surveyors
427 COLUMBIA ROAD, HANOVER, MA 02339 / T: (781) 826-9200
26 UNION STREET, PLYMOUTH MA 02360 / T: (508) 746-6060
WWW.MERRILLINC.COM

SHARED USE PATH - PHASE 1

HANOVER RAILS TO TRAILS
HANOVER, MASSACHUSETTS

OWNER/APPLICANT
TOWN OF HANOVER, DEPARTMENT OF PUBLIC WORKS
40 POND STREET
HANOVER, MASSACHUSETTS 02339

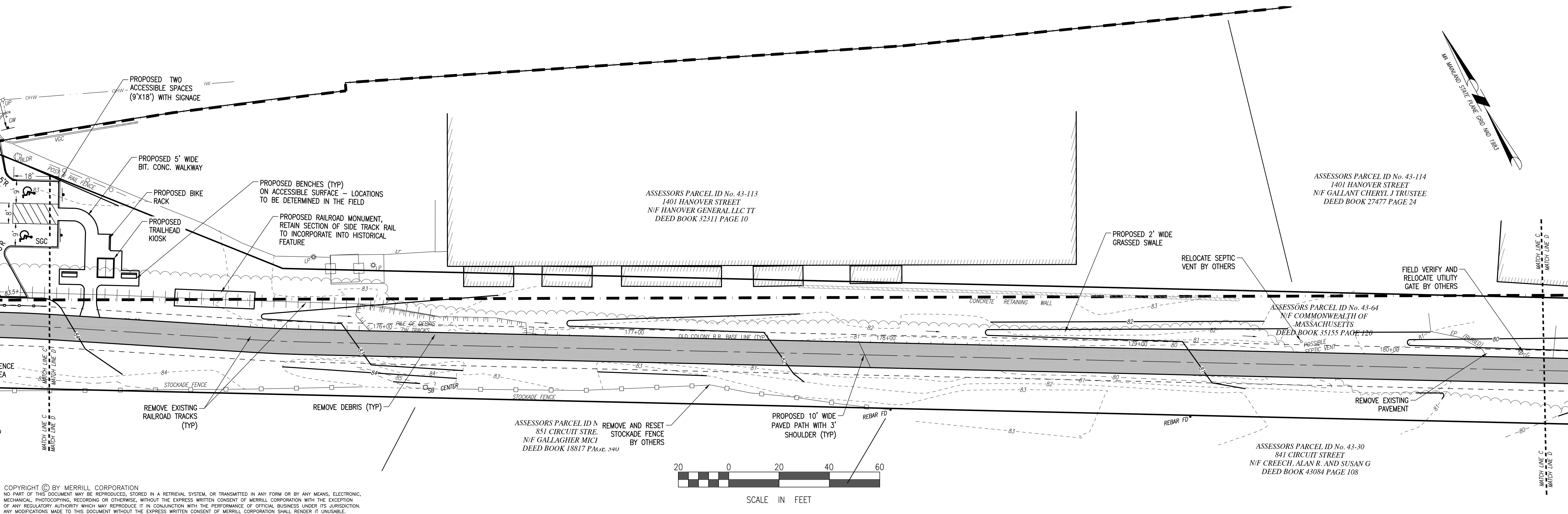
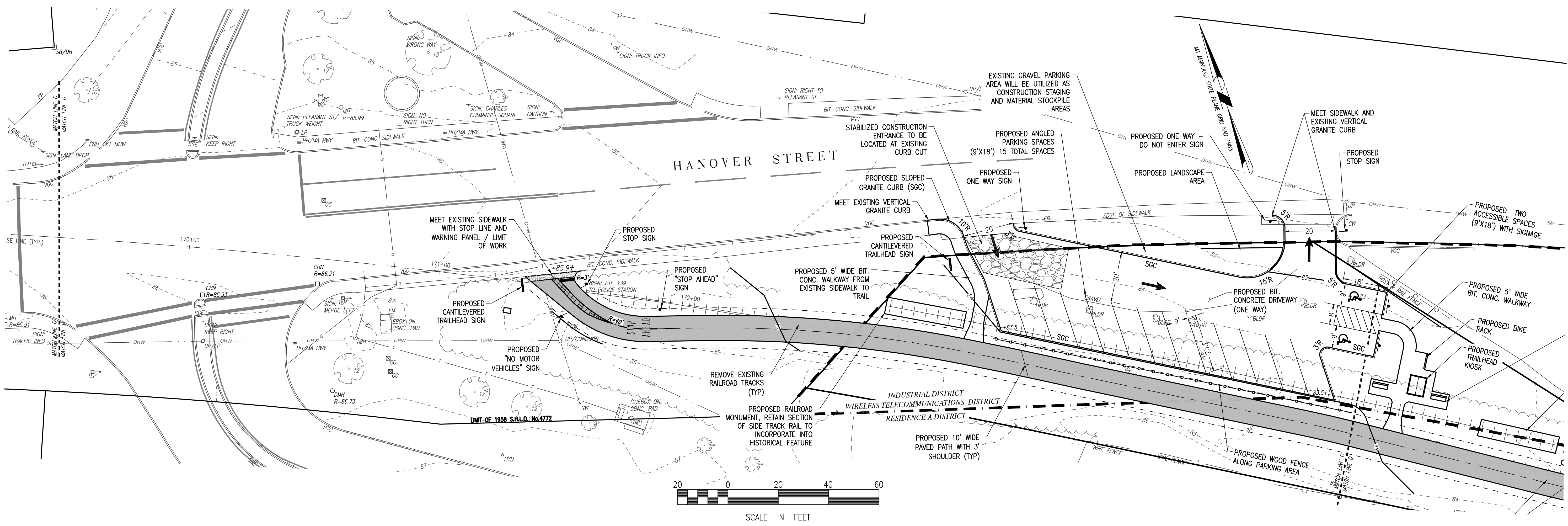
AUGUST 26, 2022

SCALE: 1"=20'

JOB NO. 20-055

LATEST REVISION:

SHEET 2 OF 7



COPYRIGHT © BY MERRILL CORPORATION
 NO PART OF THIS DOCUMENT MAY BE REPRODUCED, STORED IN A RETRIEVAL SYSTEM, OR TRANSMITTED IN ANY FORM OR BY ANY MEANS, ELECTRONIC, MECHANICAL, PHOTOCOPIING, RECORDING OR OTHERWISE, WITHOUT THE EXPRESS WRITTEN CONSENT OF MERRILL CORPORATION WITH THE EXCEPTION OF ANY REGULATORY AUTHORITY WHICH MAY REPRODUCE IT IN CONJUNCTION WITH THE PERFORMANCE OF OFFICIAL BUSINESS UNDER ITS JURISDICTION. ANY MODIFICATIONS MADE TO THIS DOCUMENT WITHOUT THE EXPRESS WRITTEN CONSENT OF MERRILL CORPORATION SHALL RENDER IT UNUSABLE.

REVISIONS

NO.	DATE	DESCRIPTION



DRAWN BY: VC

DESIGNED BY:

CHECKED BY: DK

Merrill
 Engineers and Land Surveyors
 427 COLUMBIA ROAD, HANOVER, MA 02339 / T: (781) 826-9200
 26 UNION STREET, PLYMOUTH MA 02360 / T: (508) 746-6060
 WWW.MERRILLINC.COM

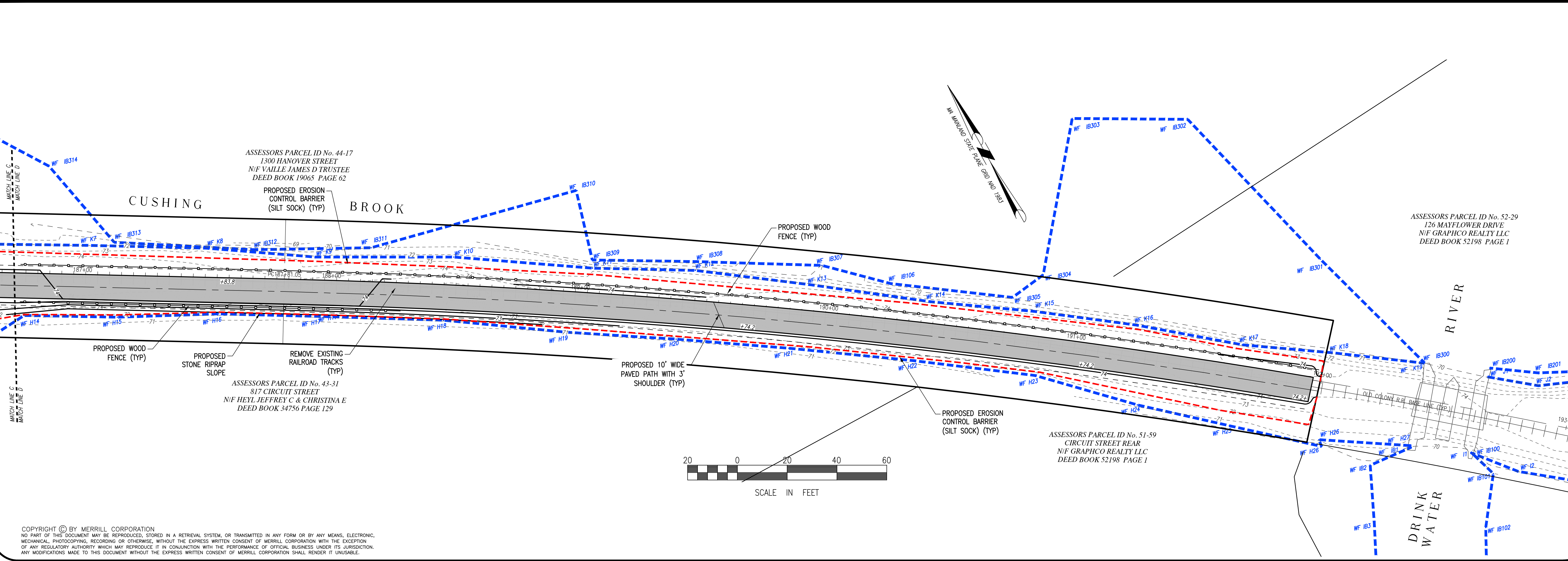
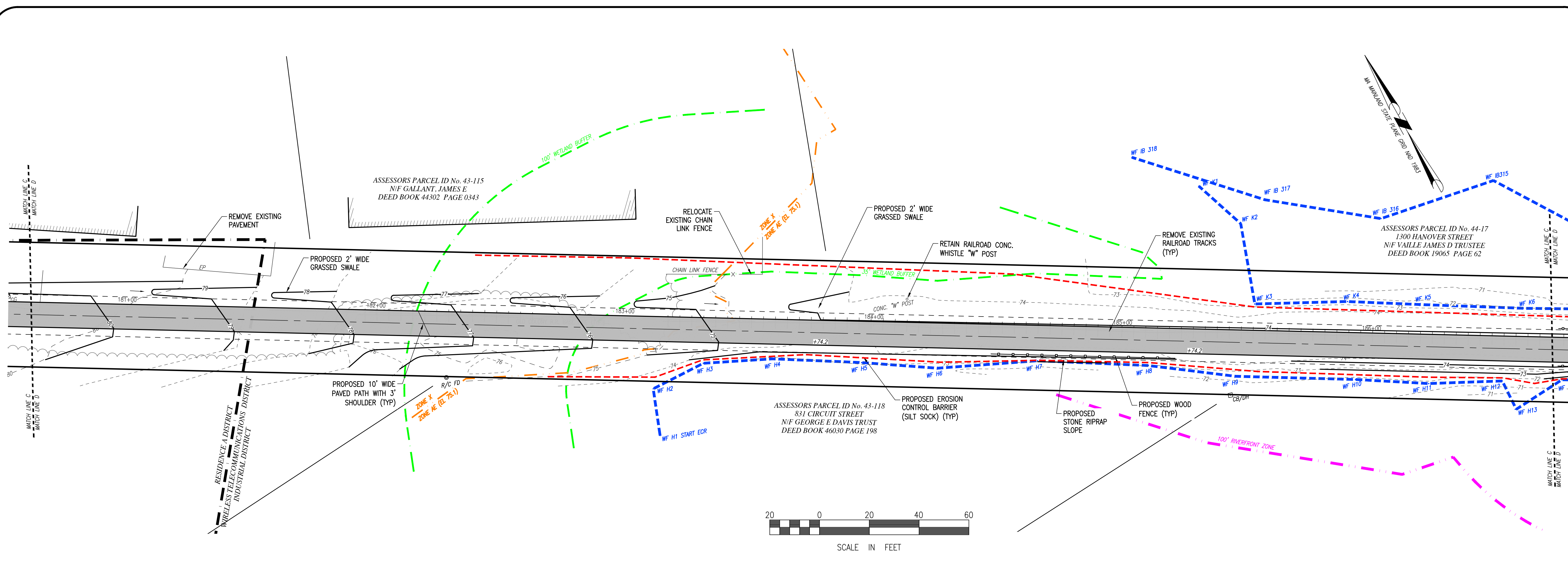
SHARED USE PATH - PHASE 1
HANOVER RAILS TO TRAILS
HANOVER, MASSACHUSETTS
 OWNER/APPLICANT
 TOWN OF HANOVER, DEPARTMENT OF PUBLIC WORKS
 40 POND STREET
 HANOVER, MASSACHUSETTS 02339

AUGUST 26, 2022

SCALE: 1"=20'

JOB NO. 20-055

LATEST REVISION:



COPYRIGHT © BY MERRILL CORPORATION
 NO PART OF THIS DOCUMENT MAY BE REPRODUCED, STORED IN A RETRIEVAL SYSTEM, OR TRANSMITTED IN ANY FORM OR BY ANY MEANS, ELECTRONIC, MECHANICAL, PHOTOCOPIING, RECORDING OR OTHERWISE, WITHOUT THE EXPRESS WRITTEN CONSENT OF MERRILL CORPORATION WITH THE EXCEPTION OF ANY REGULATORY AUTHORITY WHICH MAY REPRODUCE IT IN CONJUNCTION WITH THE PERFORMANCE OF OFFICIAL BUSINESS UNDER ITS JURISDICTION. ANY MODIFICATIONS MADE TO THIS DOCUMENT WITHOUT THE EXPRESS WRITTEN CONSENT OF MERRILL CORPORATION SHALL RENDER IT UNUSABLE.

REVISIONS



DRAWN BY: VC

DESIGNED BY:

CHECKED BY: DK

Merrill
 Engineers and Land Surveyors
 427 COLUMBIA ROAD, HANOVER, MA 02339 / T: (781) 826-9200
 26 UNION STREET, PLYMOUTH MA 02360 / T: (508) 746-6060
 WWW.MERRILLINC.COM

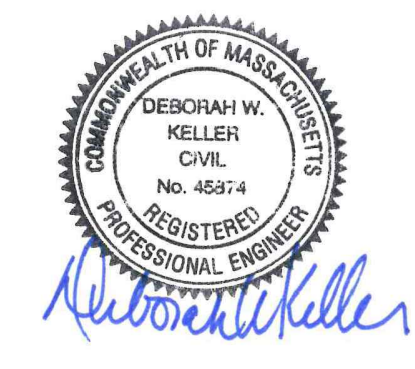
SHARED USE PATH - PHASE 1
 HANOVER RAILS TO TRAILS
 HANOVER, MASSACHUSETTS
 OWNER/APPLICANT
 TOWN OF HANOVER, DEPARTMENT OF PUBLIC WORKS
 40 POND STREET
 HANOVER, MASSACHUSETTS 02339

AUGUST 26, 2022

SCALE: 1"=20'

JOB NO. 20-055

LATEST REVISION:



DRAWN BY: VC

DESIGNED BY:

CHECKED BY: DK

Merrill
 Engineers and Land Surveyors
 427 COLUMBIA ROAD, HANOVER, MA 02339 / T: (781) 826-9200
 26 UNION STREET, PLYMOUTH MA 02360 / T: (508) 746-6060
 WWW.MERRILLINC.COM

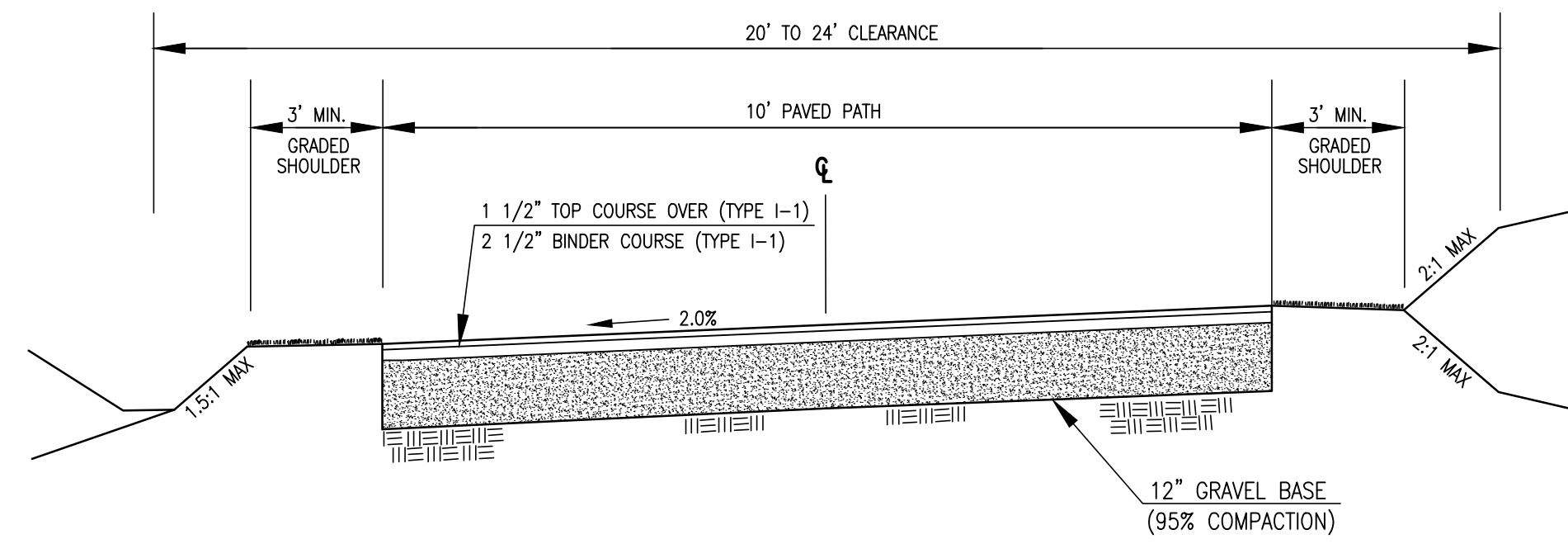
SHARED USE PATH - PHASE 1
 HANOVER RAILS TO TRAILS
 HANOVER, MASSACHUSETTS
 OWNER/APPLICANT
 TOWN OF HANOVER, DEPARTMENT OF PUBLIC WORKS
 40 POND STREET
 HANOVER, MASSACHUSETTS 02339

AUGUST 26, 2022

SCALE: 1"=20'

JOB NO. 20-055

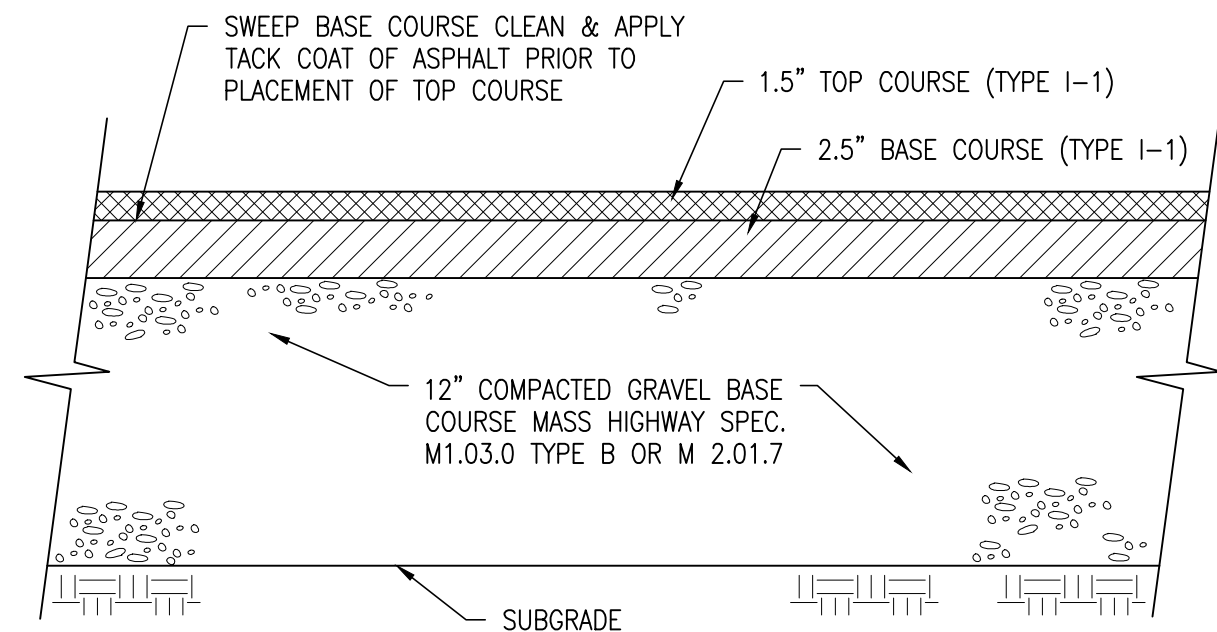
LATEST REVISION:



- TYPICAL PATH SECTION NOTES:**
- SUBGRADE SHALL BE CRUSHER RUN GRAVEL, CONSISTING OF INERT MATERIAL THAT IS HARD, DURABLE STONE, AND COURSE SAND, FREE FROM LOAM AND CLAY, SURFACE COATING AND DELETERIOUS MATERIALS. IT SHALL MEET THE FOLLOWING GRADATION:

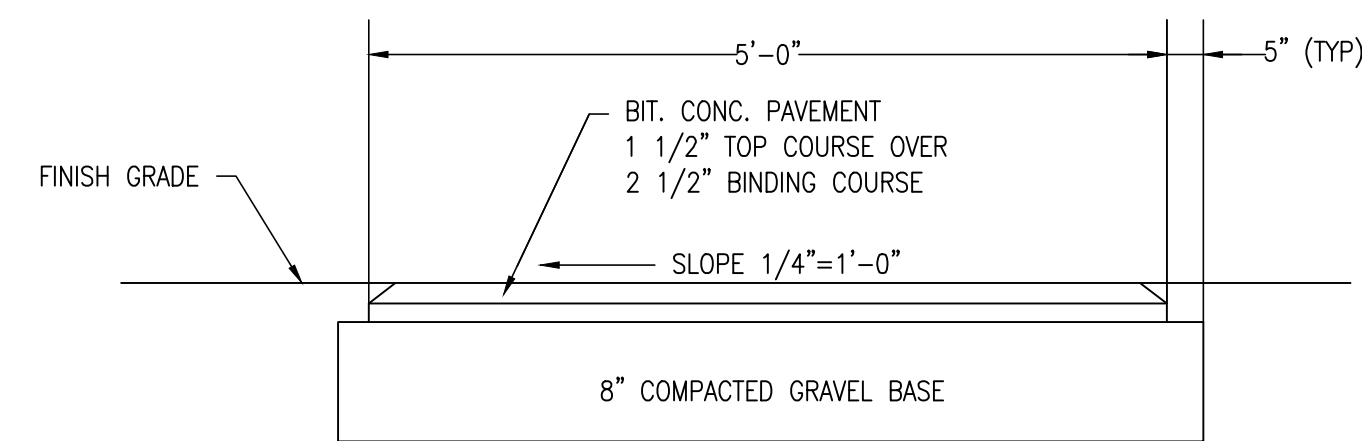
SIEVE	PERCENT PASSING
3"	100
1.5"	70-100
.75"	50-85
#4	30-60
#200	0-12
 - ALL PAVING MATERIAL TO BE BITUMINOUS CONCRETE TYPE I-1 PER MASS DOT STANDARDS.
 - ALL WORK SHALL BE PERFORMED IN ACCORDANCE WITH HANOVER DPW RULES AND REGULATIONS.

TYPICAL CROSS SECTION OF SHARED USE PATH
 (NOT TO SCALE)

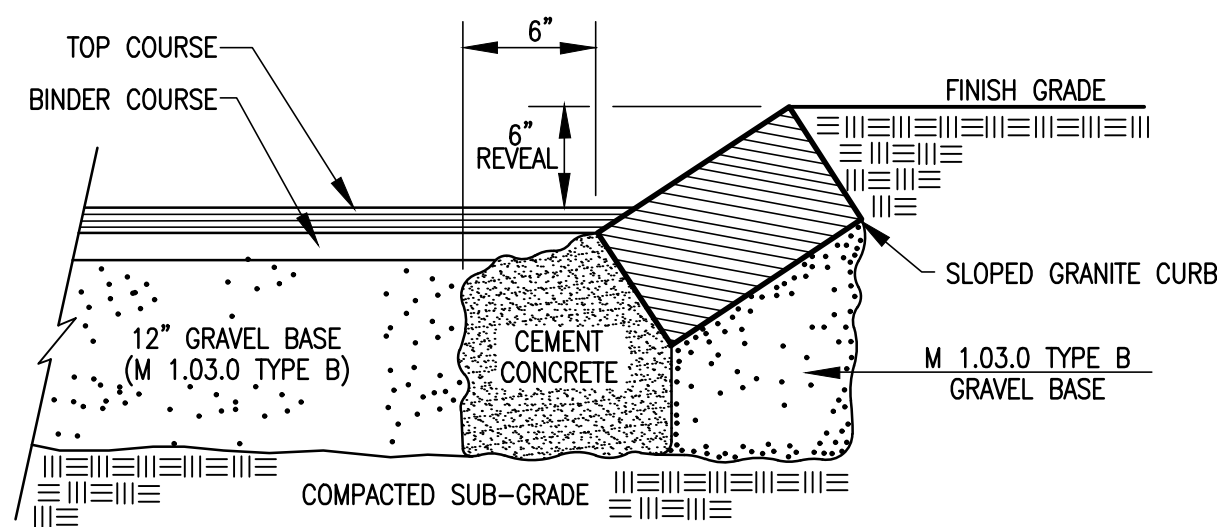


- NOTE:**
- ALL UNSUITABLE MATERIAL SHALL BE REMOVED AND REPLACED WITH CLEAN GRAVEL BASE (95% COMPACTION)
 - ALL DRIVEWAY AND PARKING AREAS SHALL BE CONSTRUCTED IN ACCORDANCE WITH GEOTECHNICAL ENGINEERS SPECIFICATIONS.

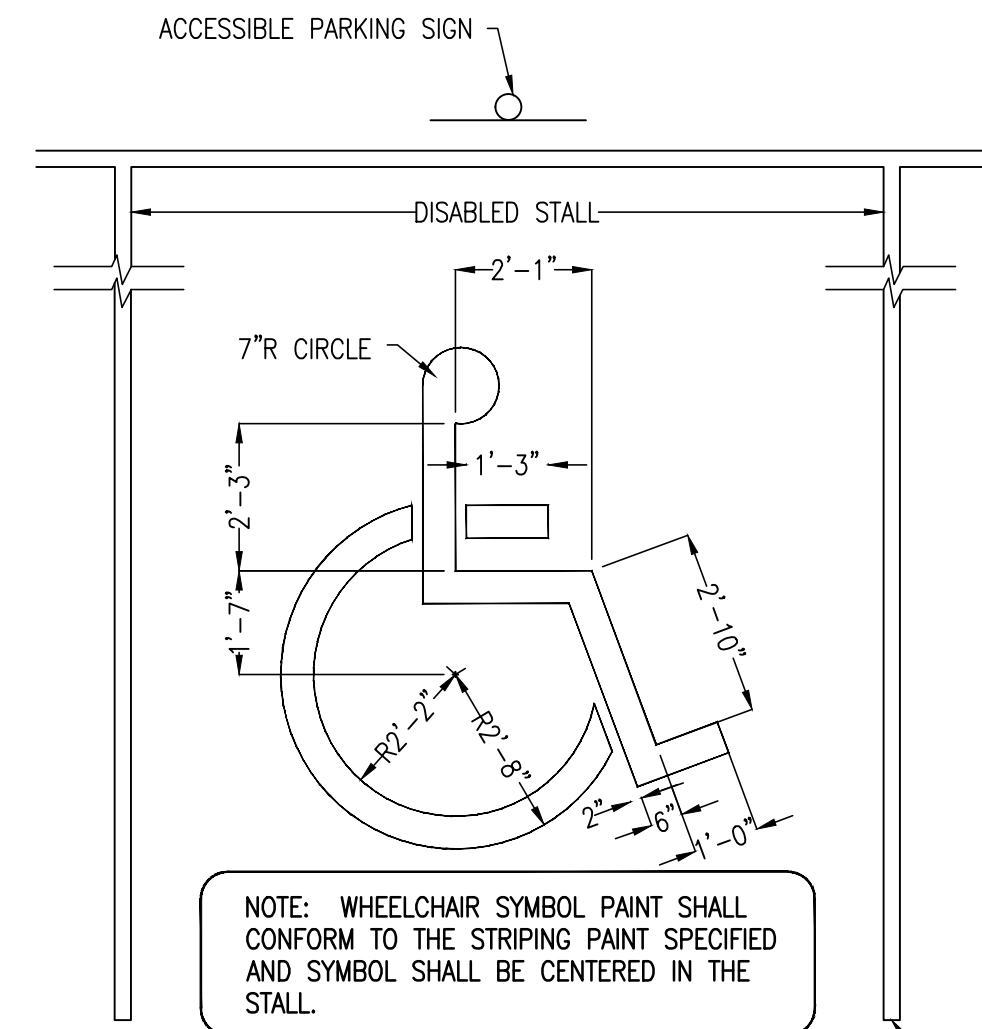
BITUMINOUS CONCRETE PARKING PAVEMENT
 (NOT TO SCALE)



TYPICAL BITUMINOUS CONCRETE SIDEWALK SECTION
 (NOT TO SCALE)

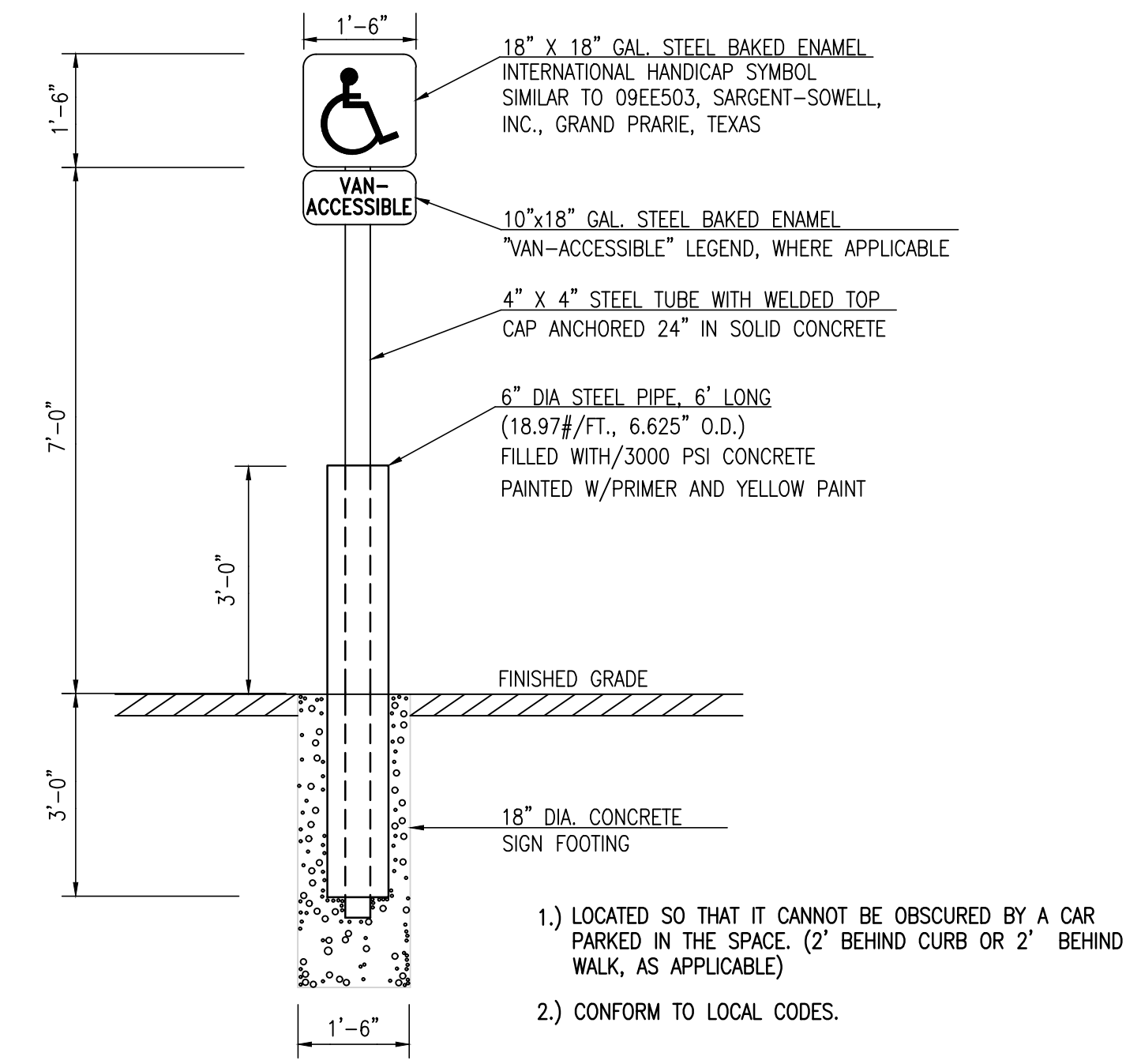


SLOPED GRANITE CURB
 (NOT TO SCALE)



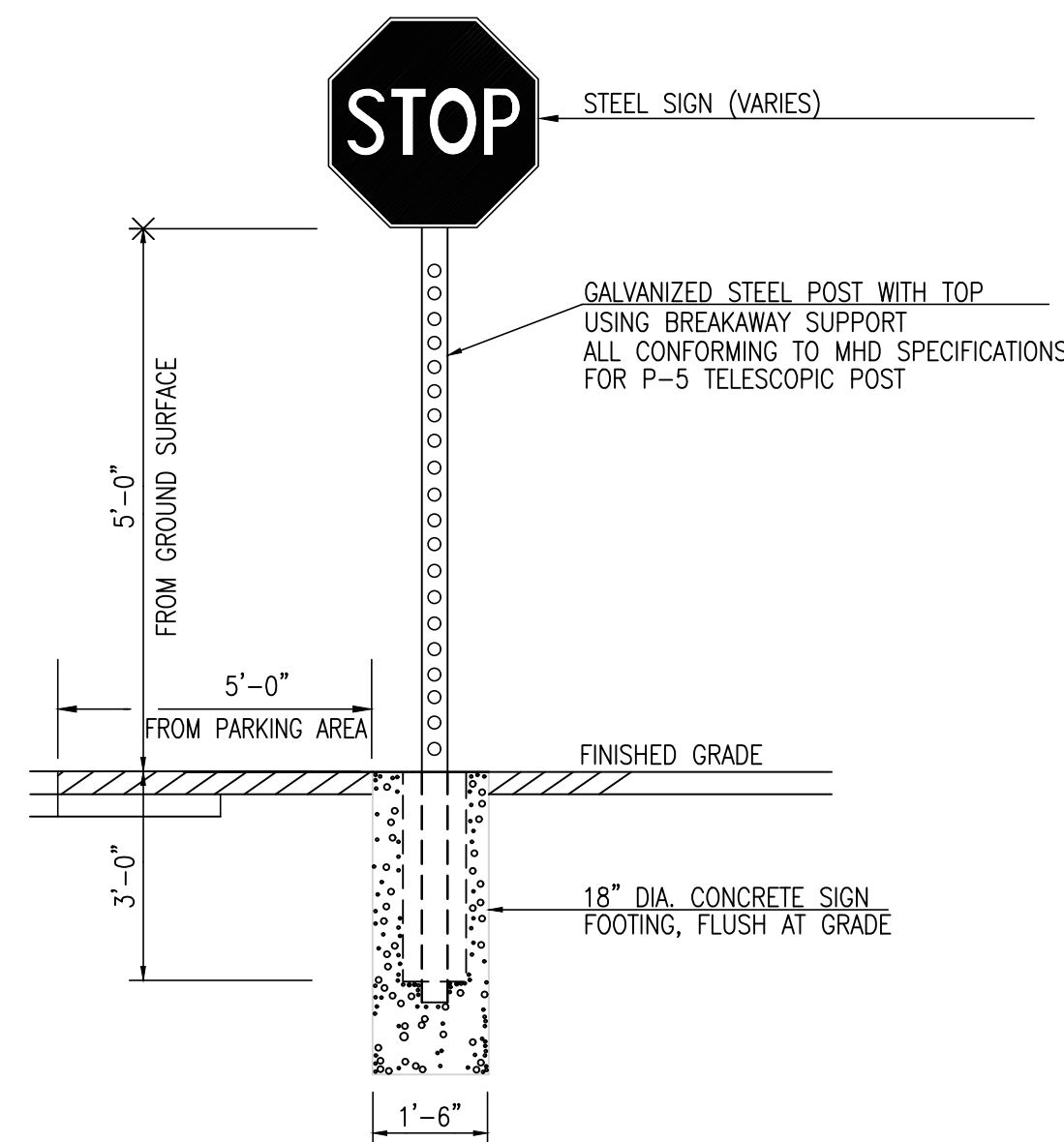
- 12'x18', 5' TO BOTTOM OF SYMBOL
- LOCATED SO THAT IT CANNOT BE OBTAINED BY A CAR PARKED IN THE SPACE. (2' BEHIND CURB OR 2' BEHIND WALK, AS APPLICABLE)
- CONFORM TO LOCAL CODES.

ACCESSIBLE PARKING SPACE PAINTING DETAIL
 (NOT TO SCALE)

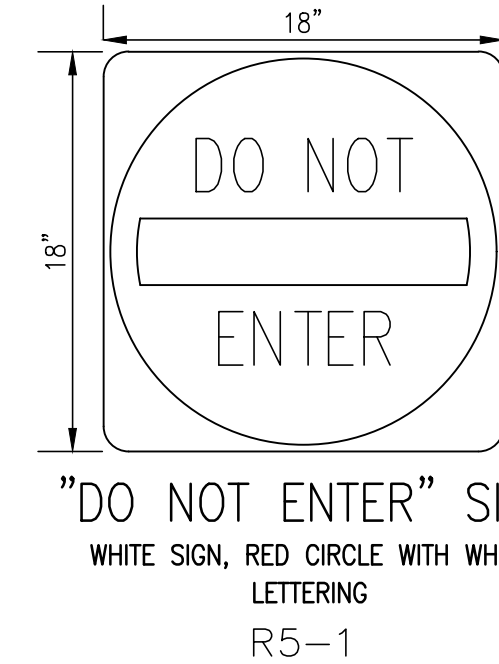


- LOCATED SO THAT IT CANNOT BE OBTAINED BY A CAR PARKED IN THE SPACE. (2' BEHIND CURB OR 2' BEHIND WALK, AS APPLICABLE)
- CONFORM TO LOCAL CODES.

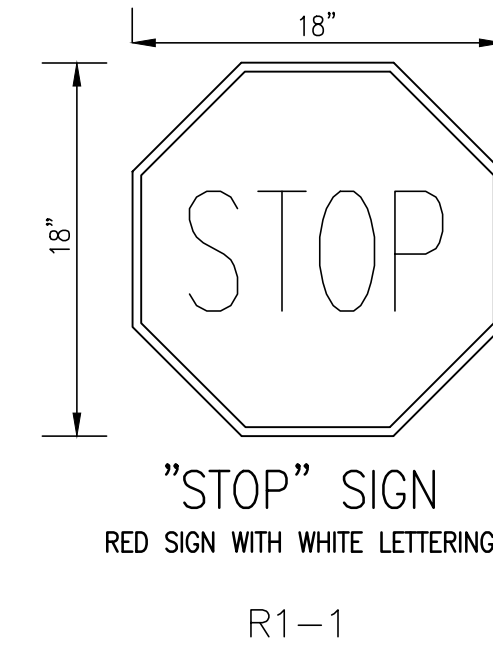
ACCESSIBLE PARKING SIGN DETAIL
 (NOT TO SCALE)



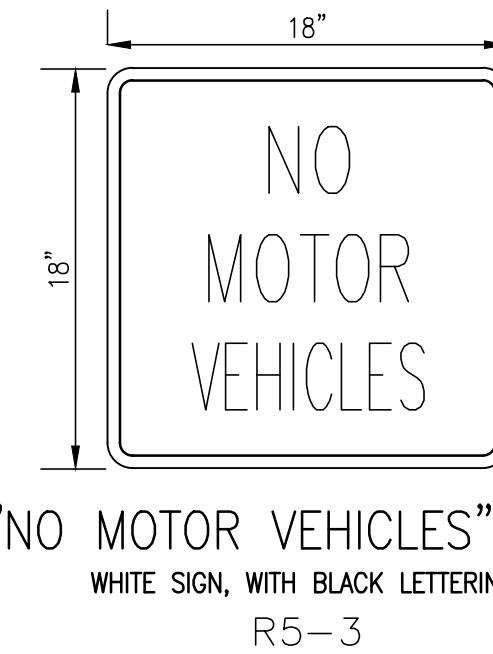
SIGN DETAIL
 (NOT TO SCALE)



"DO NOT ENTER" SIGN
 WHITE SIGN, RED CIRCLE WITH WHITE LETTERING
 R5-1



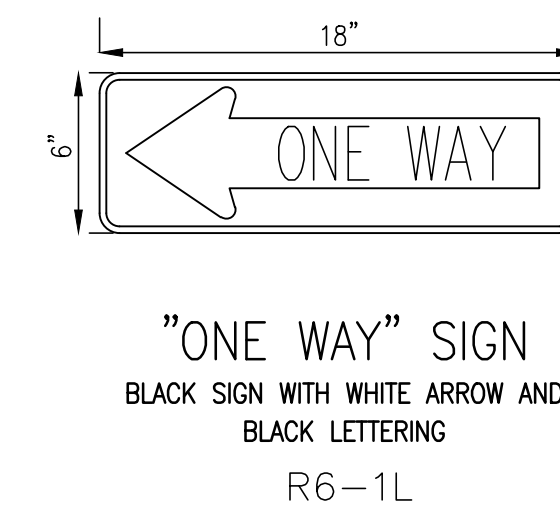
"STOP" SIGN
 RED SIGN WITH WHITE LETTERING
 R1-1



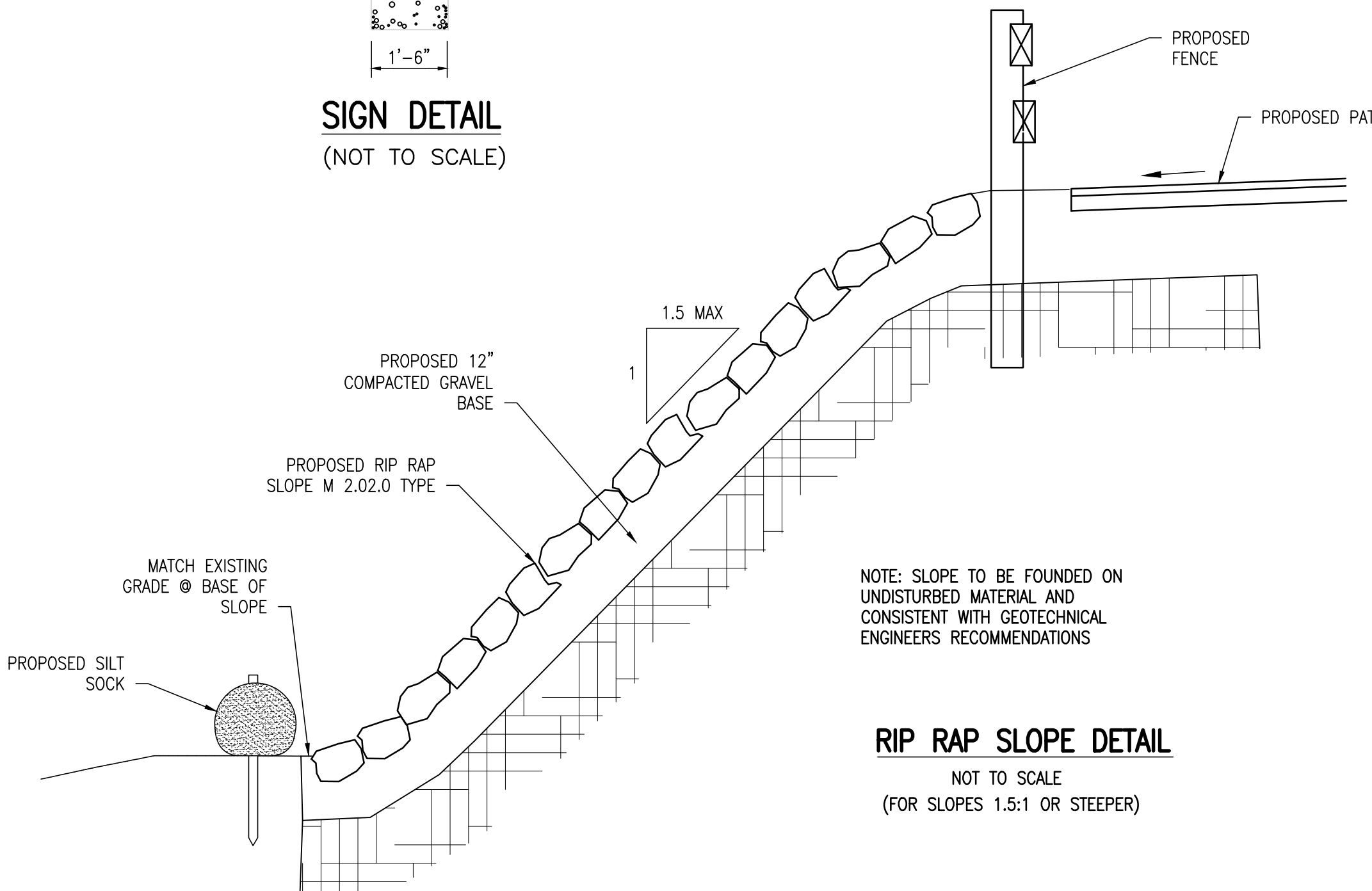
"NO MOTOR VEHICLES" SIGN
 WHITE SIGN, WITH BLACK LETTERING
 R5-3



"STOP AHEAD" SIGN
 YELLOW SIGN WITH BLACK LETTERING
 W3-1a

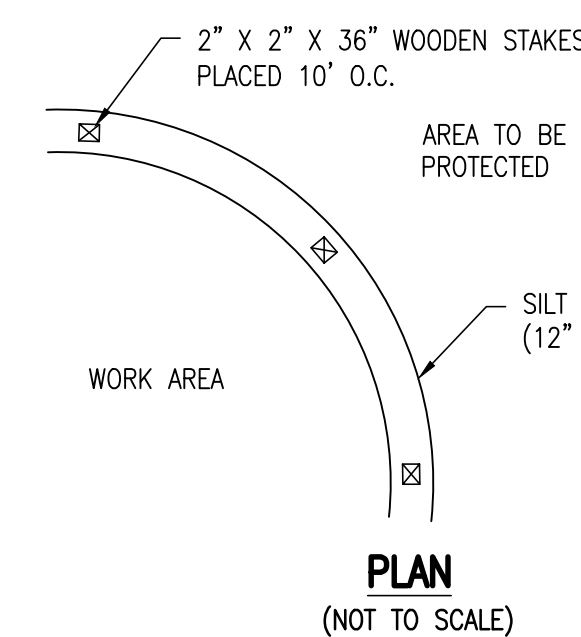


"ONE WAY" SIGN
 BLACK SIGN WITH WHITE ARROW AND BLACK LETTERING
 R6-1L

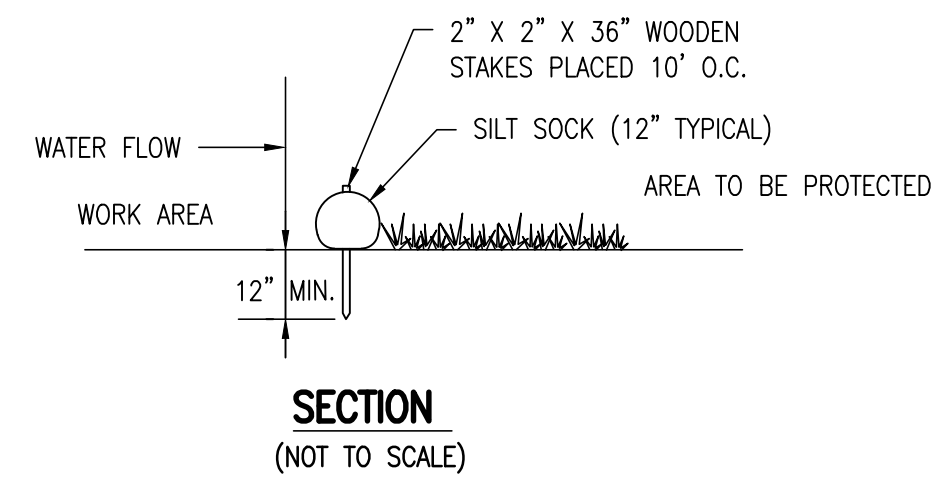


- NOTE:** SLOPE TO BE FOUND ON UNDISTURBED MATERIAL AND CONSISTENT WITH GEOTECHNICAL ENGINEERS RECOMMENDATIONS

RIP RAP SLOPE DETAIL
 NOT TO SCALE
 (FOR SLOPES 1.5:1 OR STEEPER)



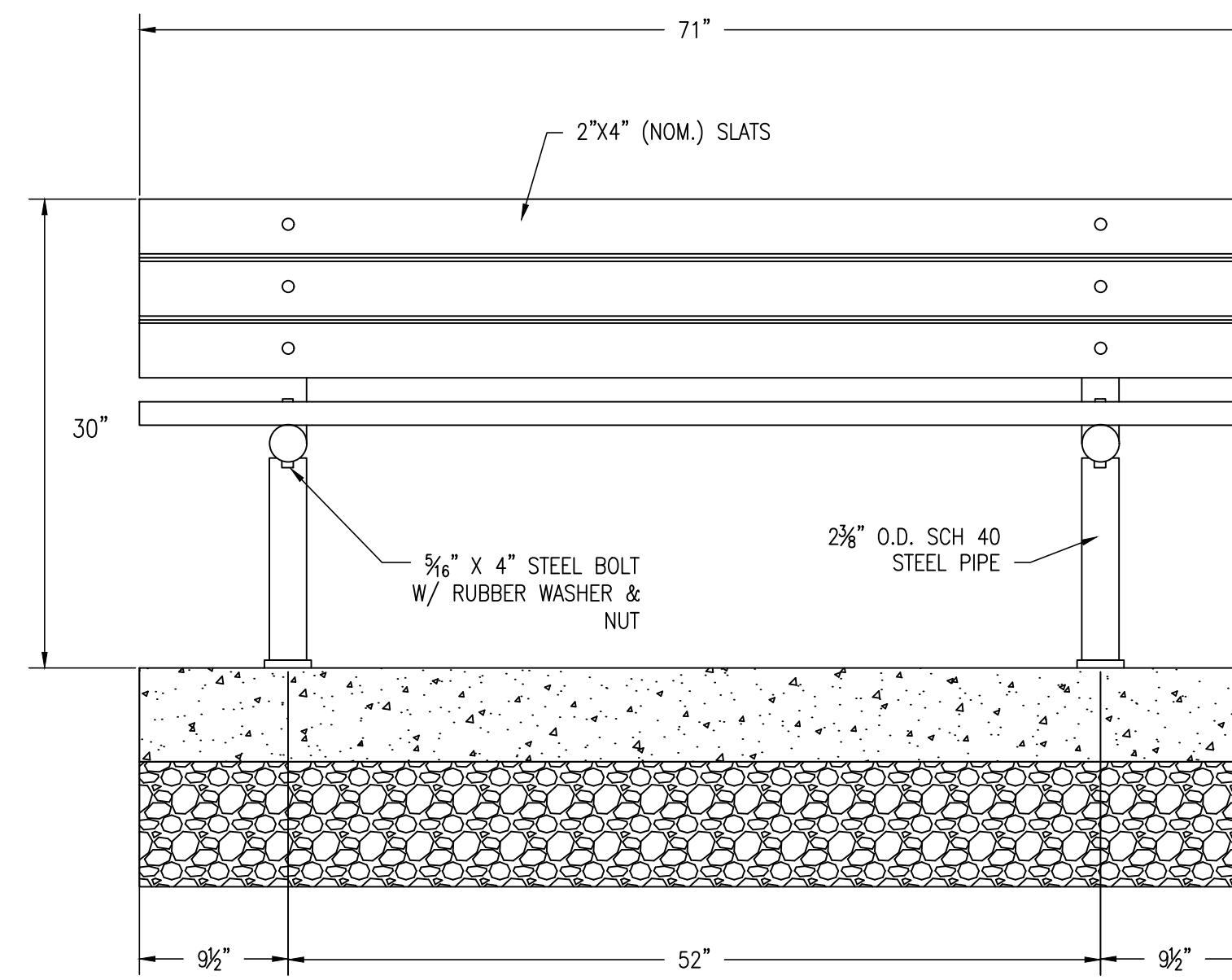
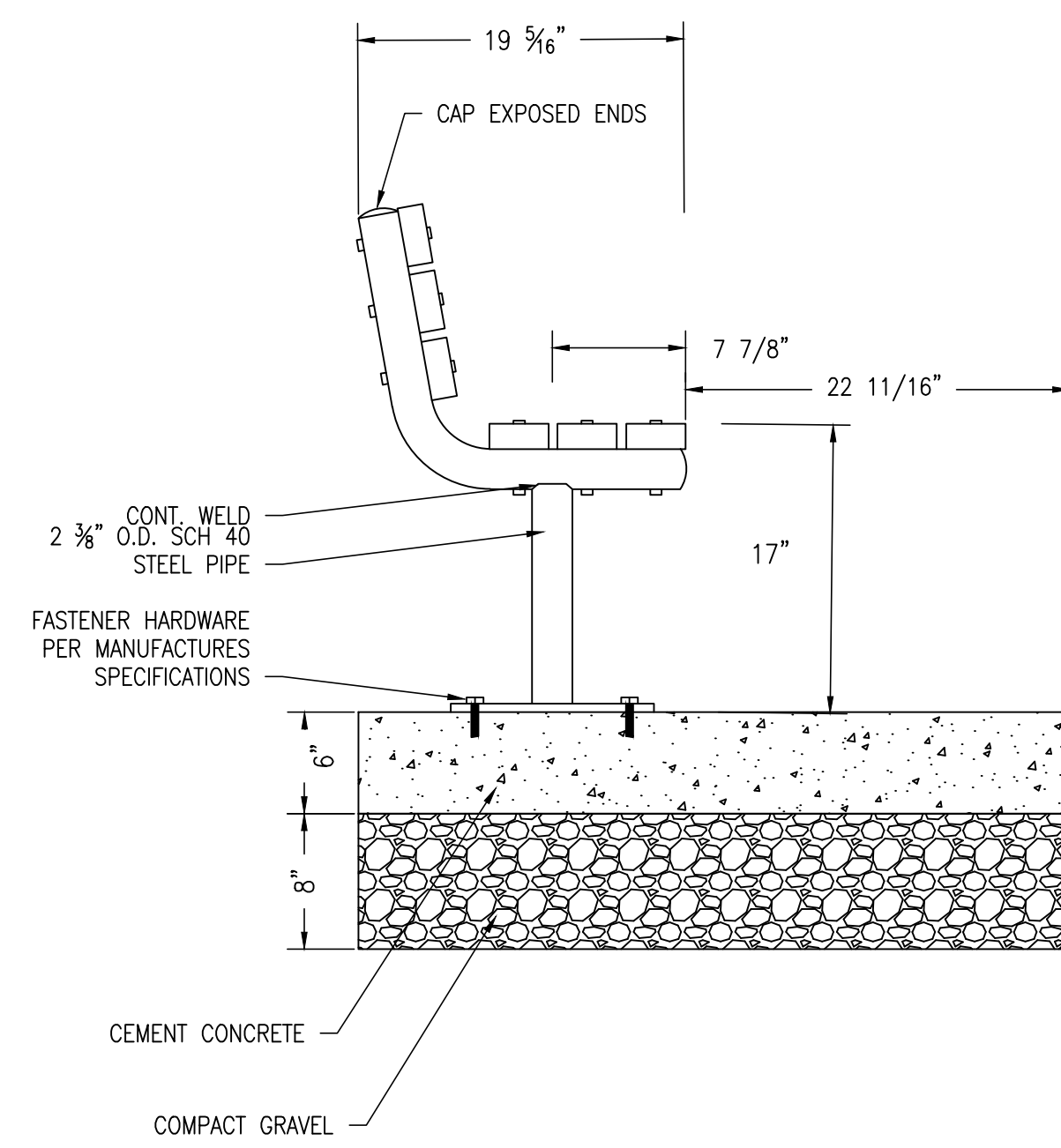
PLAN
 (NOT TO SCALE)



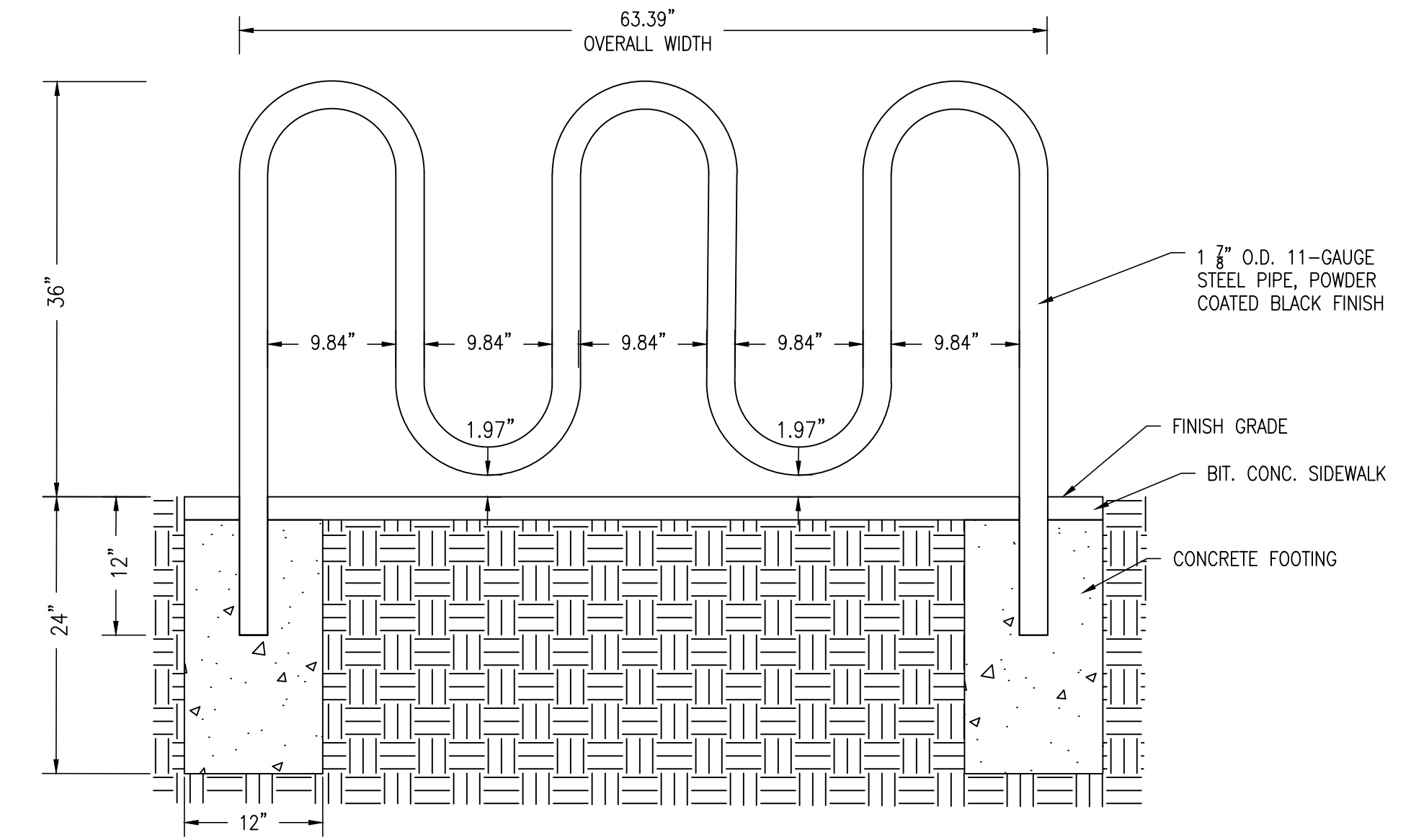
SECTION
 (NOT TO SCALE)

- NOTES:**
- REFER TO THE PLAN FOR PROPOSED LOCATION.
 - SILT SOCKS TO BE NATURAL FIBERS ONLY.

SILT SOCK DETAIL
 (NOT TO SCALE)

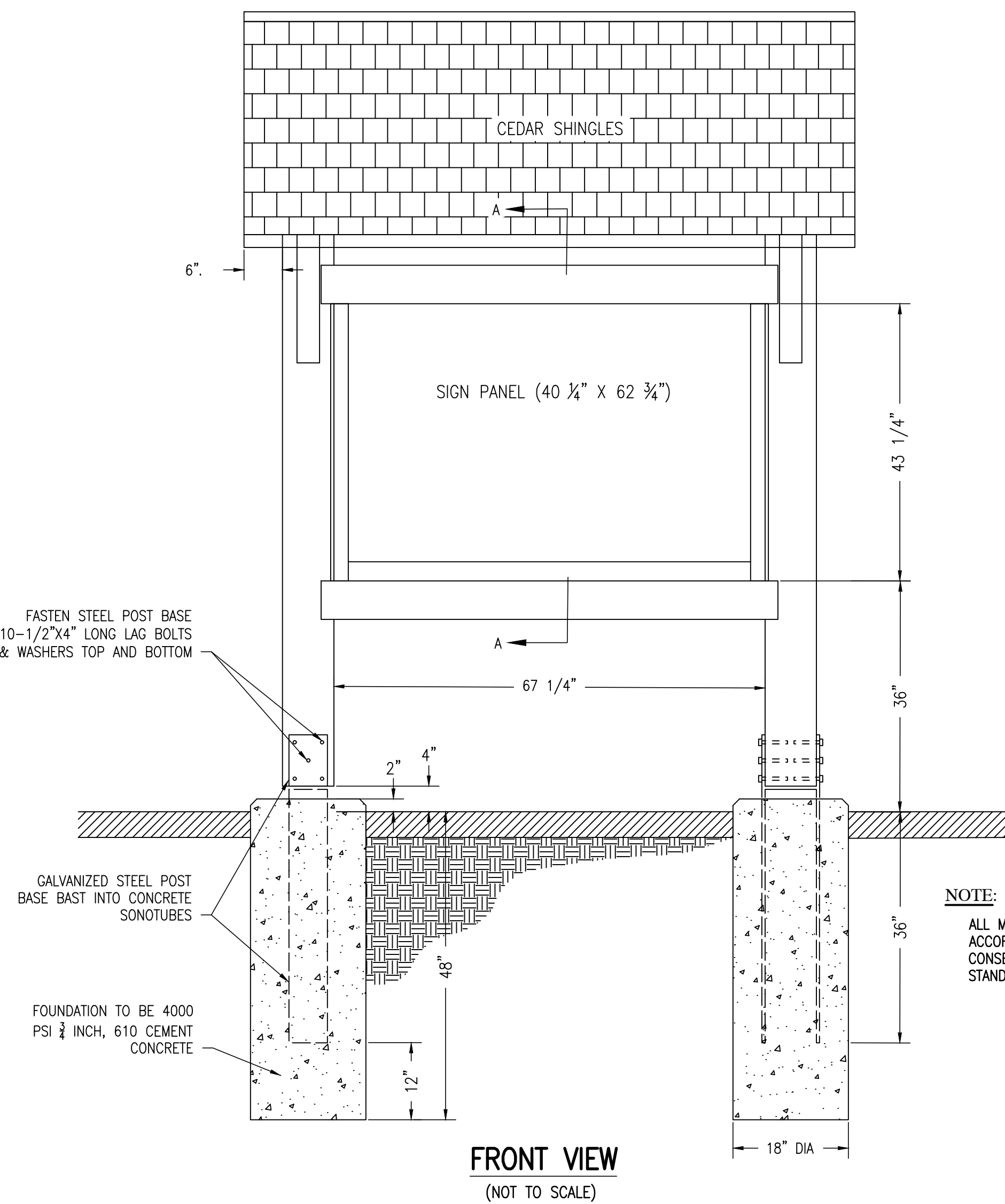


- BENCH NOTES:**
1. STEEL PIPING SHALL BE POWDER COATED BLACK FINISH.
 2. SLATS SHALL BE 2"x4" (NOM.). MATERIAL AND FINISH TO BE PER TOWN OF HANOVER REQUIREMENTS.
 3. ALL HARDWARE SHALL BE STAINLESS STEEL UNLESS OTHERWISE NOTED.



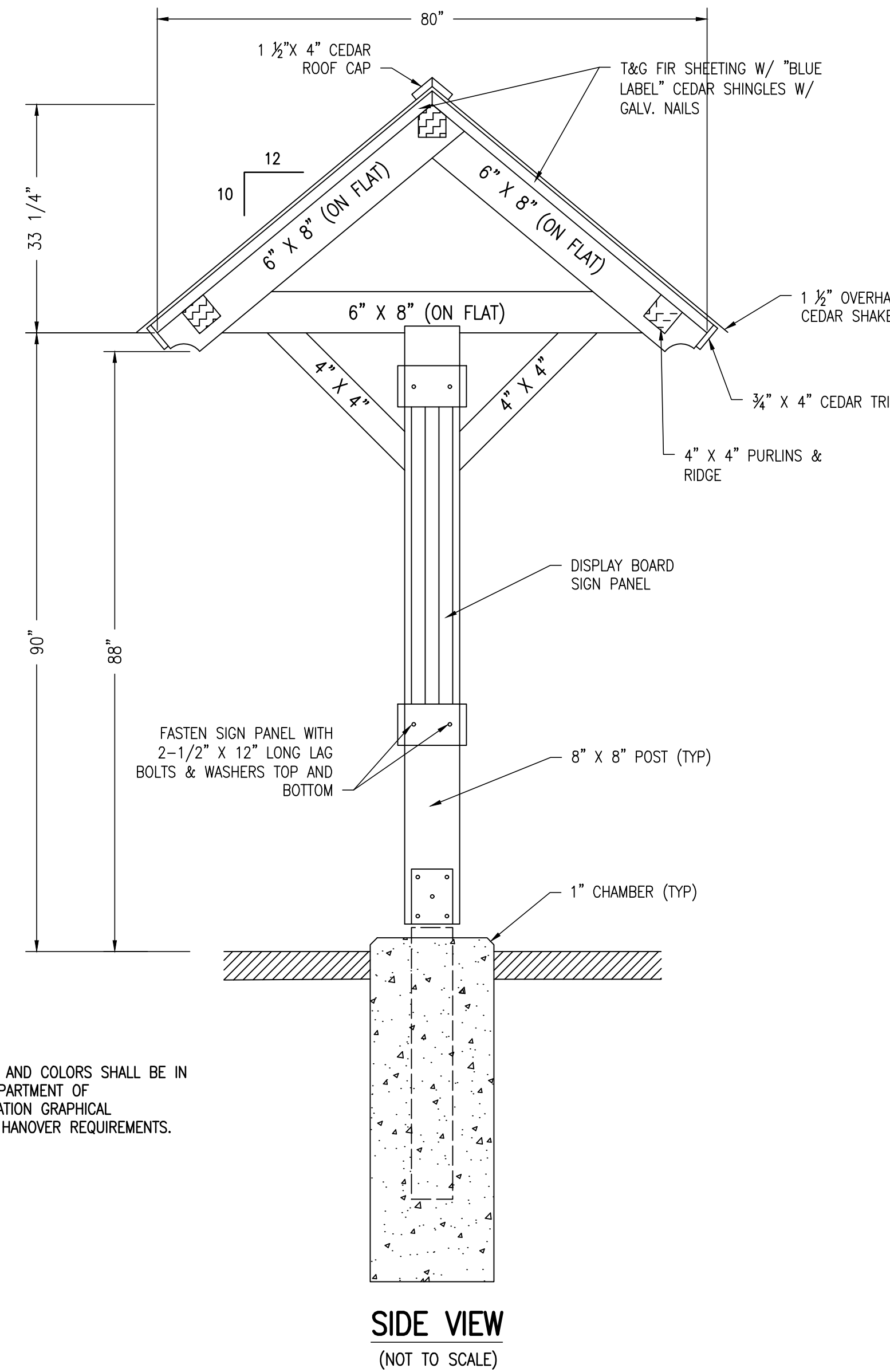
PARK BENCH
(NOT TO SCALE)

BICYCLE RACK - 7 BICYCLE CAPACITY
(NOT TO SCALE)

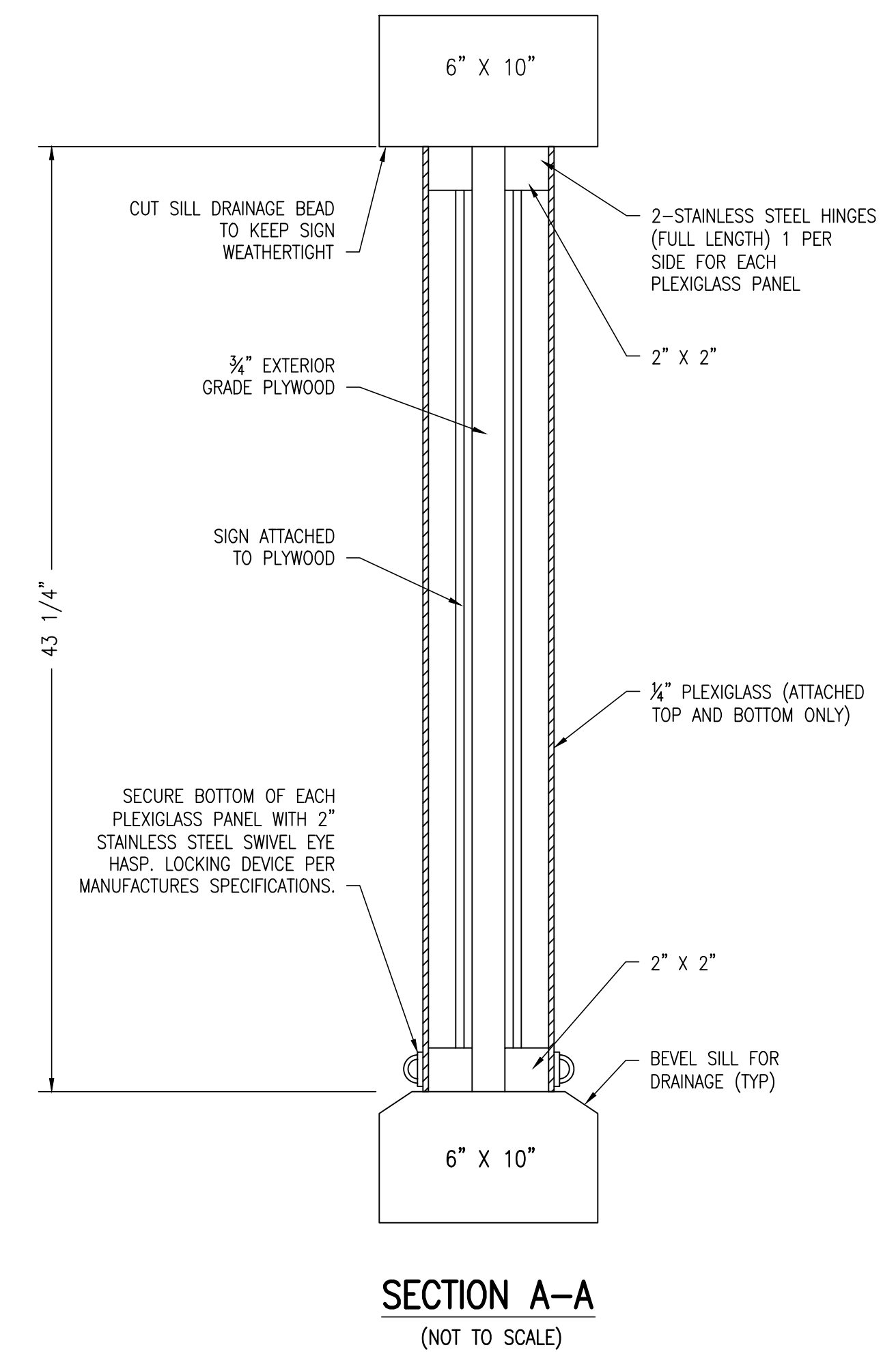


NOTE:
ALL MATERIALS, LETTERING, AND COLORS SHALL BE IN ACCORDANCE WITH THE DEPARTMENT OF CONSERVATION AND RECREATION GRAPHICAL STANDARDS AND TOWN OF HANOVER REQUIREMENTS.

FRONT VIEW
(NOT TO SCALE)



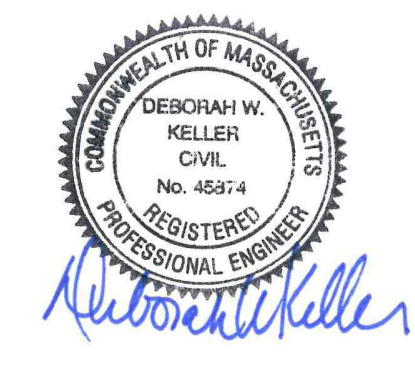
SIDE VIEW
(NOT TO SCALE)



SECTION A-A
(NOT TO SCALE)

TRAILHEAD KIOSK
(NOT TO SCALE)

REVISIONS



DRAWN BY: VC

DESIGNED BY:

CHECKED BY: DK

Merrill
Engineers and Land Surveyors
427 COLUMBIA ROAD, HANOVER, MA 02339 / T: (781) 826-9200
26 UNION STREET, PLYMOUTH MA 02360 / T: (508) 746-6060
WWW.MERRILLINC.COM

SHARED USE PATH - PHASE 1

HANOVER RAILS TO TRAILS
HANOVER, MASSACHUSETTS

OWNER/APPLICANT
TOWN OF HANOVER, DEPARTMENT OF PUBLIC WORKS
40 POND STREET
HANOVER, MASSACHUSETTS 02339

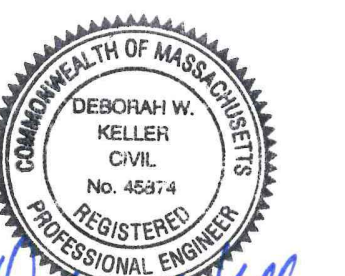
AUGUST 26, 2022

SCALE: 1"=20'

JOB NO. 20-055

LATEST REVISION:

COPYRIGHT © BY MERRILL CORPORATION
NO PART OF THIS DOCUMENT MAY BE REPRODUCED, STORED IN A RETRIEVAL SYSTEM, OR TRANSMITTED IN ANY FORM OR BY ANY MEANS, ELECTRONIC, MECHANICAL, PHOTOCOPIING, RECORDING OR OTHERWISE, WITHOUT THE EXPRESS WRITTEN CONSENT OF MERRILL CORPORATION WITH THE EXCEPTION OF ANY REGULATORY AUTHORITY WHICH MAY REPRODUCE IT IN CONJUNCTION WITH THE PERFORMANCE OF OFFICIAL BUSINESS UNDER ITS JURISDICTION. ANY MODIFICATIONS MADE TO THIS DOCUMENT WITHOUT THE EXPRESS WRITTEN CONSENT OF MERRILL CORPORATION SHALL RENDER IT UNUSABLE.



DRAWN BY: VC

DESIGNED BY:

CHECKED BY: DK

Merrill
 Engineers and Land Surveyors
 427 COLUMBIA ROAD, HANOVER, MA 02339 / T: (781) 826-9200
 26 UNION STREET, PLYMOUTH MA 02360 / T: (508) 746-6060
 WWW.MERRILLINC.COM

SHARED USE PATH - PHASE 1

HANOVER RAILS TO TRAILS
 HANOVER, MASSACHUSETTS

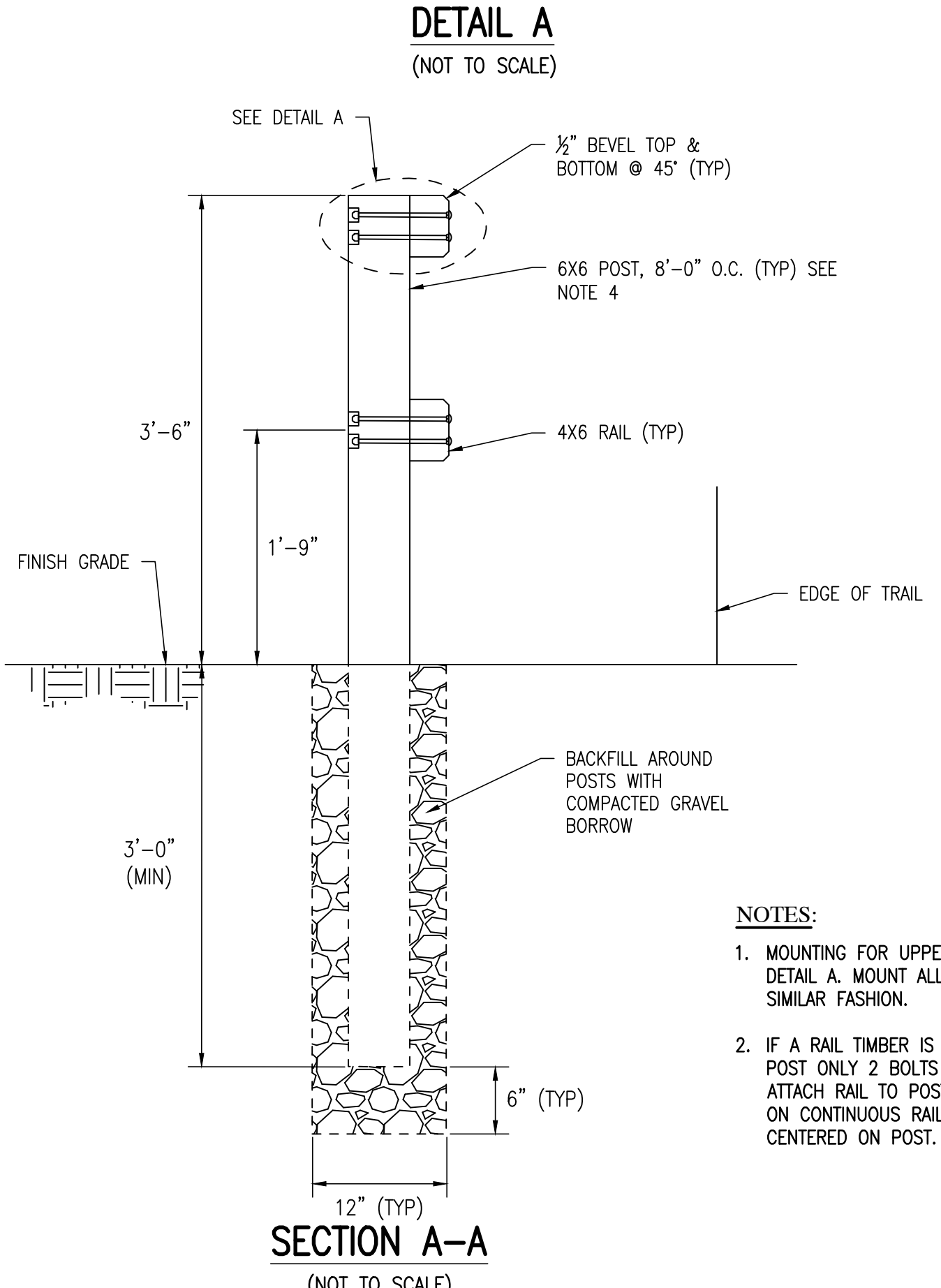
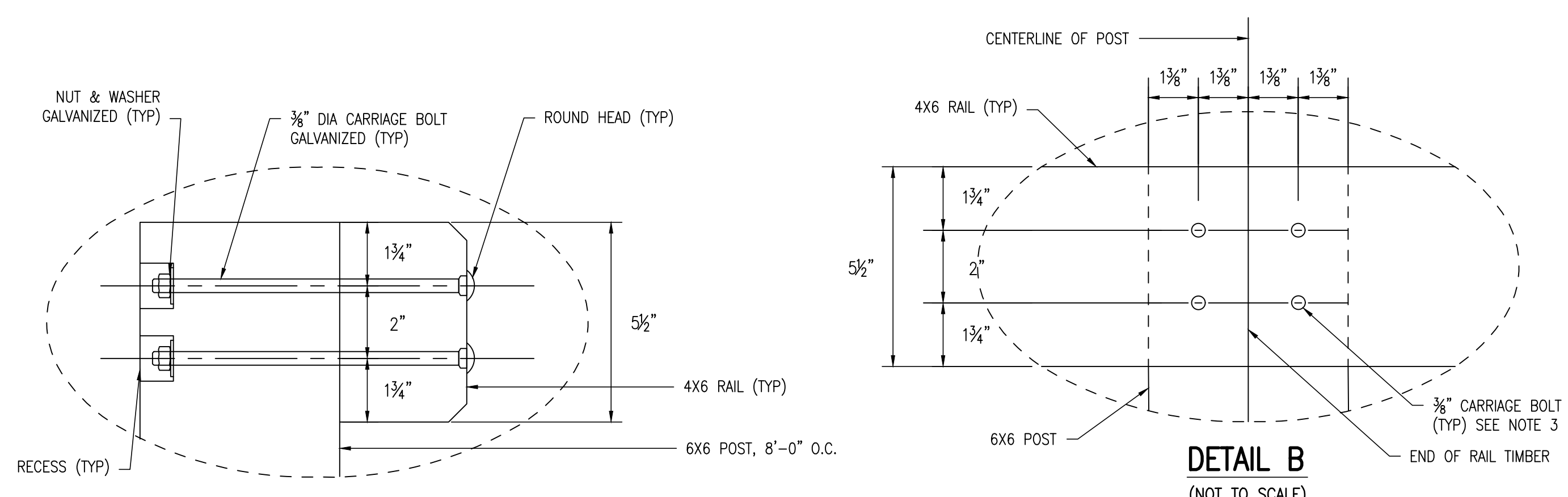
OWNER/APPLICANT
 TOWN OF HANOVER, DEPARTMENT OF PUBLIC WORKS
 40 POND STREET
 HANOVER, MASSACHUSETTS 02339

AUGUST 26, 2022

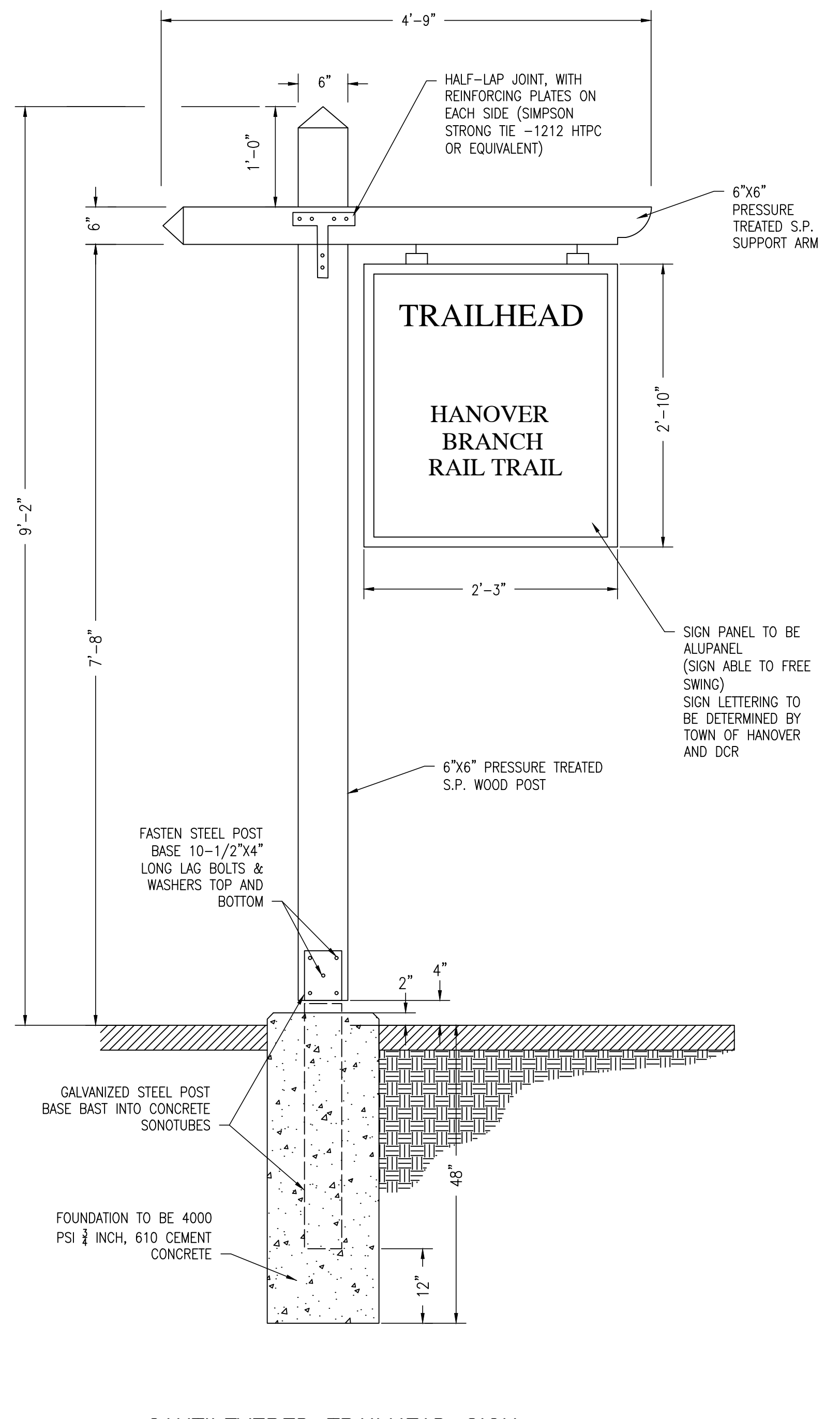
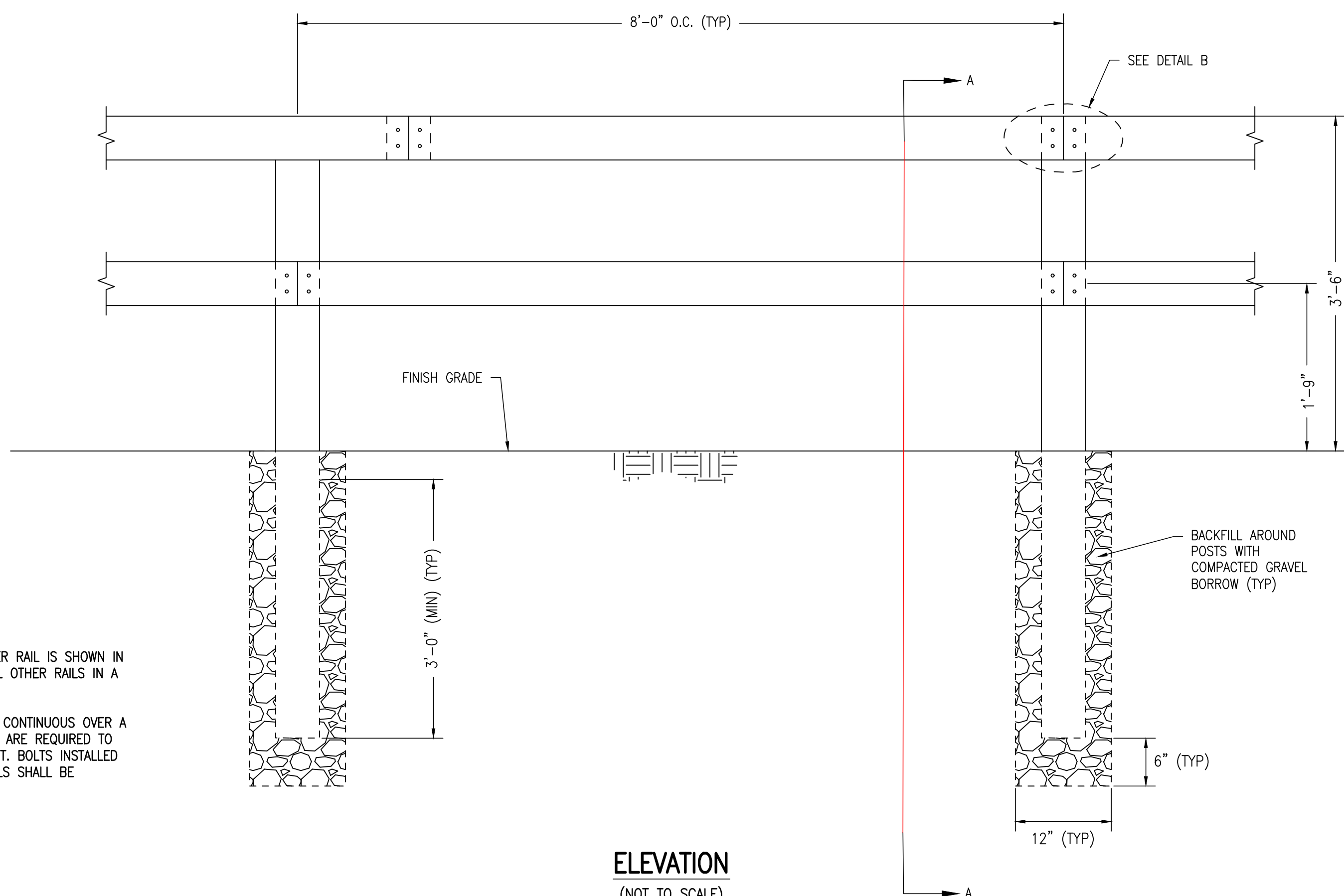
SCALE: 1"=20'

JOB NO. 20-055

LATEST REVISION:

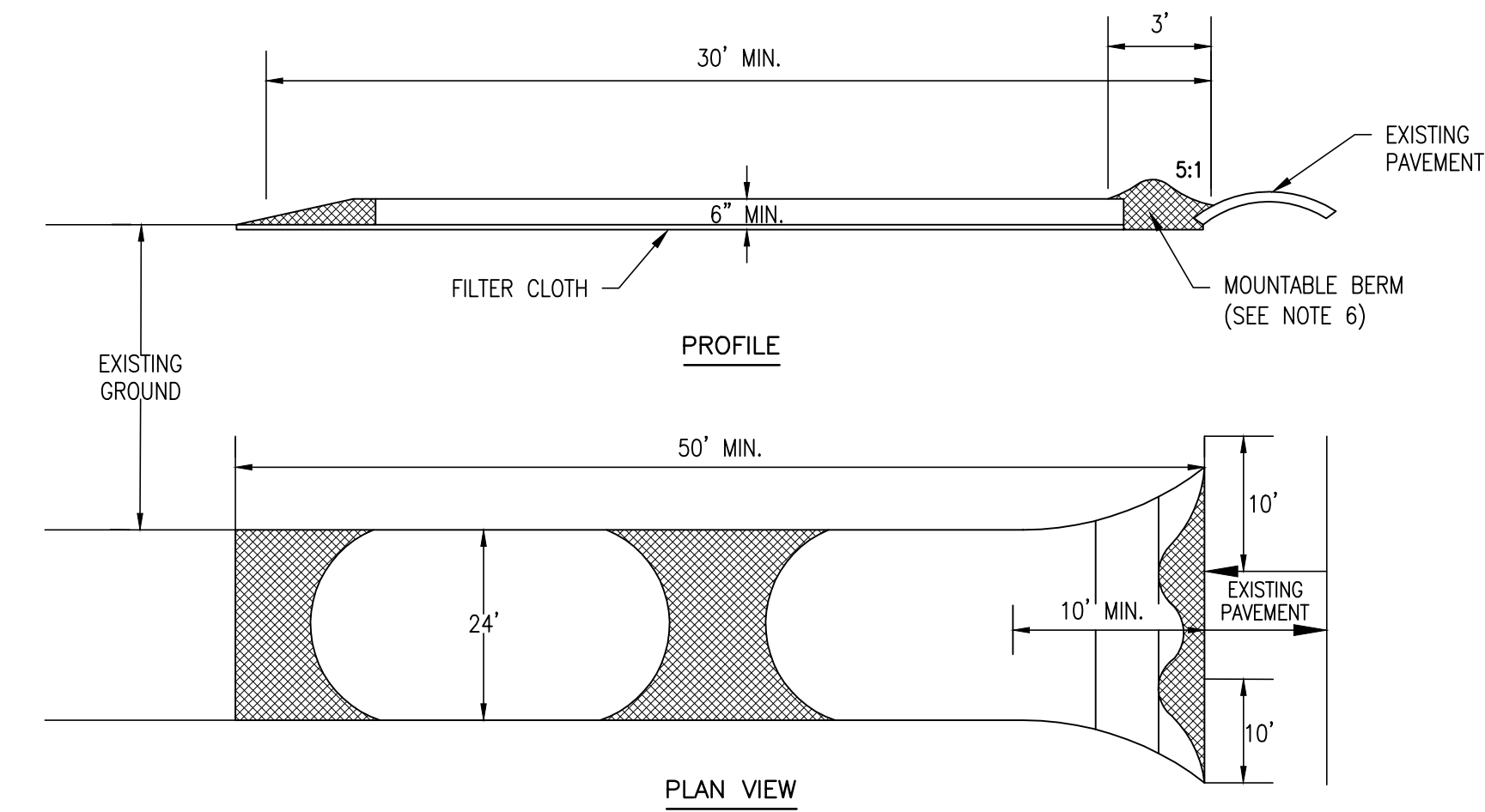


- NOTES:**
1. MOUNTING FOR UPPER RAIL IS SHOWN IN DETAIL A. MOUNT ALL OTHER RAILS IN A SIMILAR FASHION.
 2. IF A RAIL TIMBER IS CONTINUOUS OVER A POST ONLY 2 BOLTS ARE REQUIRED TO ATTACH RAIL TO POST. BOLTS INSTALLED ON CONTINUOUS RAILS SHALL BE CENTERED ON POST.



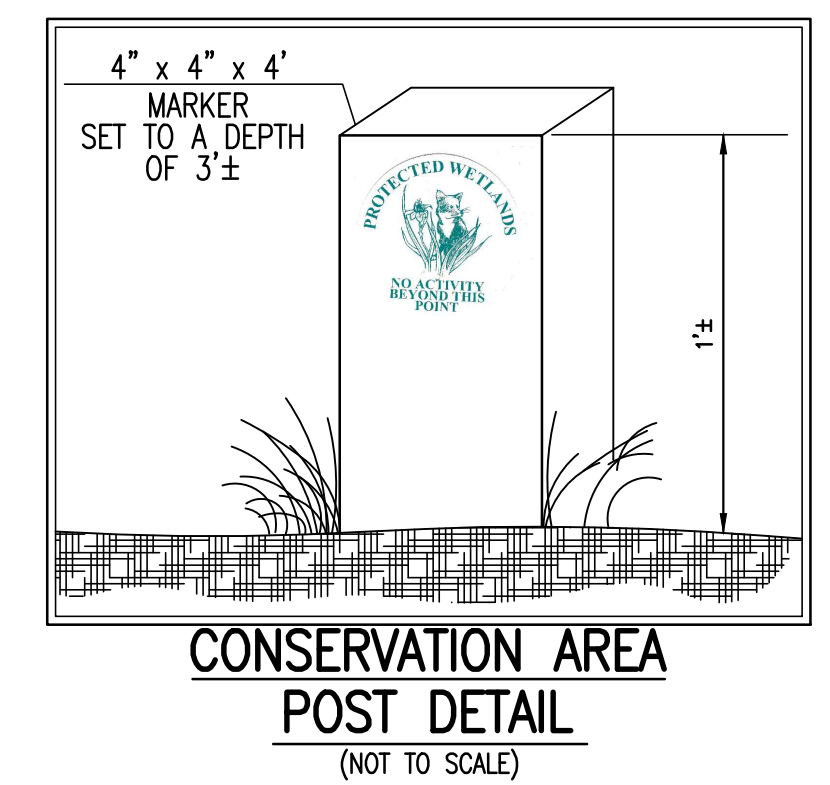
GENERAL SEEDING NOTES

1. PERMANENT SEEDING SHALL CONSIST OF THE FOLLOWING LOW MOW GRASS SEED MIXES OR APPROVED EQUAL FOR OVERSEEDING PASSIVE RECREATION AREAS THAT NEED TO STAY AT A LOW HEIGHT. MIX SHALL BE SELECTED FROM THOSE INCLUDED BELOW BY REQUIRED SITE CONDITIONS - OPTIMUM SEEDING DATES ARE BETWEEN APRIL 1, AND MAY 31 AND AUGUST 16 AND OCTOBER 15.
- NATURAL PERFECTION MIX, BY LAVOIE HORTICULTURE - A LOW MOW MIX THAT INCLUDES NATIVE FESCUES INTENDED TO BE MOWED 1x PER YEAR AFTER SEED ESTABLISHMENT, WITH NO REQUIREMENT FOR FERTILIZER OR WATER AFTER ESTABLISHMENT.
- FLEUR DE LAWN(PT 755) - DEVELOPED BY OREGON STATE UNIVERSITY - A MIX OF LOW GROWING FLOWERS, CLOVERS AND GRASSES. THE CLOVERS NATURALLY SELF FEED THE LAWN WITH NITROGEN AND THE LOW GROWING FLOWERS PROVIDE POLLINATOR HABITAT. MAINTAIN AS HIGH AS 5" FOR A MINI-MEADOW LOOK, OR 3" FOR A MORE MANICURED LAWN.
- ECO-TURF MIX - TOLERANT GRASSES AND MICROCOVER HOLDS UP WELL TO WEAR - FOR HIGH TRAFFIC AREAS. LOW MAINTENANCE AND LOW INPUT, MORE SHADE TOLERANT THAN MANY OTHER LAWN ALTERNATIVES. ONCE ESTABLISHED THIS MIX REQUIRES LITTLE SUPPLEMENTAL IRRIGATION OR FERTILIZER AND TOLERATES ACIDIC AND SHADY SITES. MICROCOVER FEEDS THE COMPANION GRASSES WITH NITROGEN. THE EXTREMELY DROUGHT-TOLERANT MICROCOVER MAINTAINS A NICE DARK GREEN COLOR ONCE ESTABLISHED AND SHOULD NOT REQUIRE IRRIGATION IN MOST CLIMATES. ITS INCLUSION WITH THE GRASSES ALLOWS THE SOIL TO RETAIN MORE MOISTURE IN DRY PERIODS WHICH SUSTAINS AN OVERALL GREEN APPEARANCE OF GRASS THROUGH THE SUMMER. MOW ABOUT ONCE A MONTH TO MAINTAIN THIS LAWN AT A HEIGHT BETWEEN 2 AND 5 INCHES.
- VERDANT LAWN - RICHLY VEGETATIVE, THIS LAWN IS MULTI-TEXTURED WITH MICROCOVER AND WHITE YARROW TOT ENHANCE WEAR TOLERANCE AND PROVIDE YEAR ROUND GREEN COVER. PERFORMS WELL IN BOTH SUN AND SHADE. DIVERSITY WITHOUT FLOWERS.
- AMERICAN MEADOWS-CREEPING RED DESCUE OR ERNST SEEDS-FESTUCA RUBRA 'PENNLAWN' - LOW MAINTENANCE GRASS GROUND COVER. IT IS BENEFICIAL FOR EROSION CONTROL AND WILL ATTRACT WILDLIFE. SINGLE VARIETY, LESS RESILIENT IF SEED DOESN'T TAKE.



SPECIFICATIONS - FOR CONSTRUCTION ENTRANCE

1. STONE SIZE - USE 1 1/2" STONE OR EQUIVALENT.
2. LENGTH - AS REQUIRED, BUT NOT LESS THAN 30 FT.
3. THICKNESS - NOT LESS THAN SIX (6) INCHES.
4. WIDTH - TEN (10) FOOT MINIMUM, BUT NOT LESS THAN THE FULL WIDTH AT POINTS WHERE INGRESS OR EGRESS OCCURS.
5. FILTER CLOTH - WILL BE PLACED OVER THE ENTIRE AREA PRIOR TO PLACING OF STONE.
6. SURFACE WATER - ALL SURFACE WATER FLOWING OR DIVERTED TOWARD CONSTRUCTION ENTRANCES SHALL BE PIPED ACROSS THE ENTRANCE. IF PIPING IS IMPRACTICAL, A MOUNTABLE BERM WITH 5:1 SLOPES WILL BE PERMITTED.
7. MAINTENANCE - THE ENTRANCE SHALL BE MAINTAINED IN A CONDITION WHICH WILL PREVENT TRACKING OR FLOWING OF SEDIMENT ONTO PUBLIC RIGHTS-OF-WAY. THIS MAY REQUIRE PERIODIC TOP DRESSING WITH ADDITIONAL STONE AS CONDITIONS DEMAND AND REPAIR AND/OR CLEANOUT OF ANY MEASURES USED TO TRAP SEDIMENT. ALL SEDIMENT SPILLED, DROPPED, WASHED OR TRACKED ONTO PUBLIC RIGHTS-OF-WAYS MUST BE REMOVED IMMEDIATELY.
8. WASHING - WHEELS SHALL BE CLEANED TO REMOVE SEDIMENT PRIOR TO ENTRANCE ONTO PUBLIC RIGHTS OF WAY. WHEN WASHING IS REQUIRED, IT SHALL BE DONE ON AN AREA STABILIZED WITH STONE AND WHICH DRAINS INTO AN APPROVED SEDIMENT TRAPPING DEVICE.
9. PERIODIC INSPECTION AND NEEDED MAINTENANCE SHALL BE PROVIDED AFTER EACH RAIN.



COPYRIGHT © BY MERRILL CORPORATION
 NO PART OF THIS DOCUMENT MAY BE REPRODUCED, STORED IN A RETRIEVAL SYSTEM, OR TRANSMITTED IN ANY FORM OR BY ANY MEANS, ELECTRONIC, MECHANICAL, PHOTOCOPIING, RECORDING OR OTHERWISE, WITHOUT THE EXPRESS WRITTEN CONSENT OF MERRILL CORPORATION WITH THE EXCEPTION OF ANY REGULATORY AUTHORITY WHICH MAY REPRODUCE IT IN CONJUNCTION WITH THE PERFORMANCE OF OFFICIAL BUSINESS UNDER ITS JURISDICTION. ANY MODIFICATIONS MADE TO THIS DOCUMENT WITHOUT THE EXPRESS WRITTEN CONSENT OF MERRILL CORPORATION SHALL RENDER IT UNUSABLE.