

STARBUCKS COFFEE #11630
1972 WASHINGTON ST.
HANOVER, MA 02339



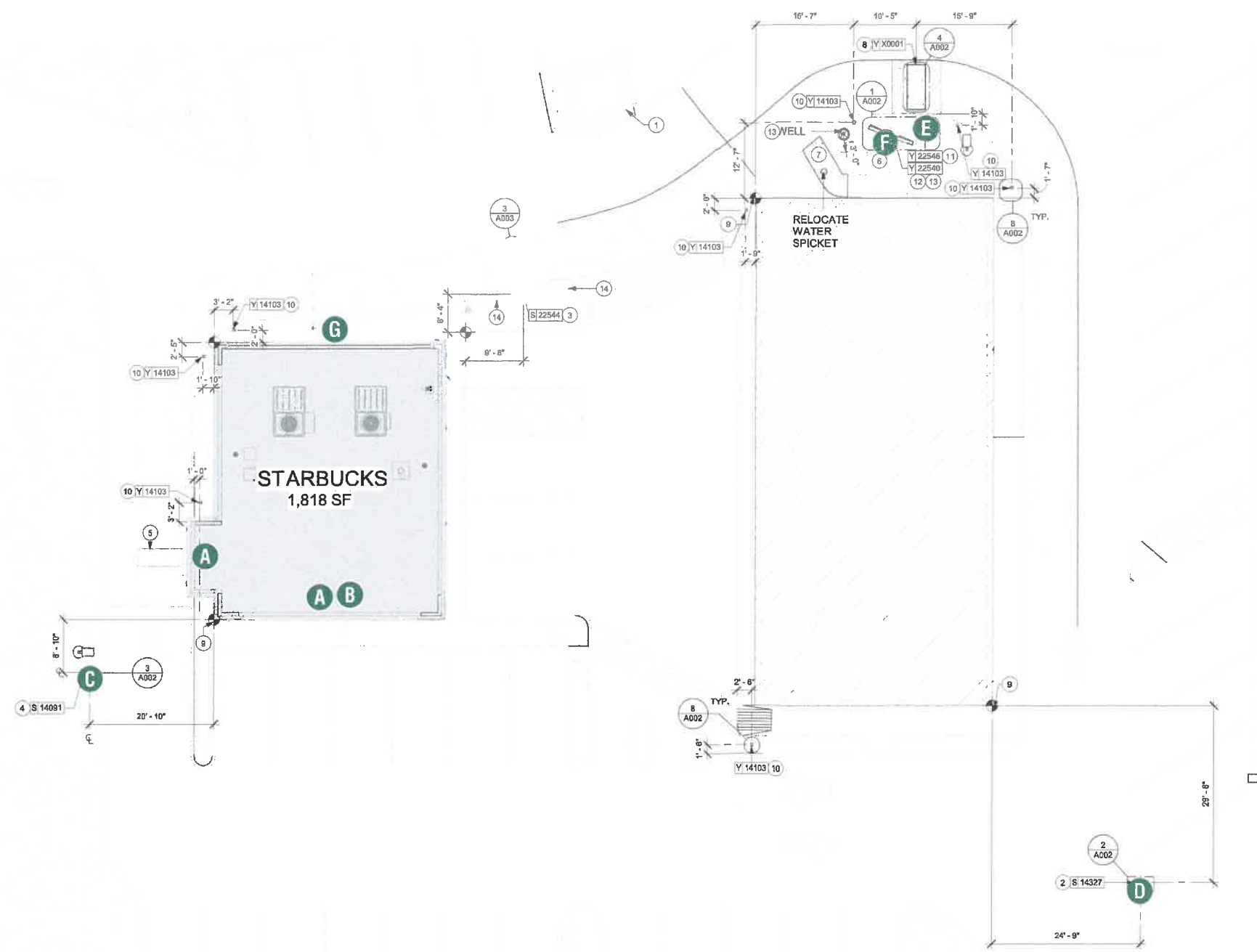
22-60327

HILTONDISPLAYS

125 HILLSIDE DRIVE • GREENVILLE SC 29607
P 800 353 9132 • F 864 242 2204
www.hiltondisplays.com

SITE PLAN

- A** 48" SIREN
- B** DT WALL CABINET
- C** DIRECTIONAL TY/EO
- D** DIRECTIONAL DT
- E** DOS
- F** MENU BOARD
- G** CLEARANCE BAR



HILTONDISPLAYS
125 HILLSIDE DRIVE • GREENVILLE SC 29607
P 800 353 9132 • F 864 242 2204
www.hiltondisplays.com

QID 22-60327

JOB NAME

Starbucks 11630

LOCATION

**1972 Washington St.
Hanover, MA 02339**

CUSTOMER CONTACT

SALESMAN / PM

Joe Nolasco

DESIGNER

Brady Taylor

DWG. DATE

4-4-22

REV. DATE / REVISION

4-6-22 BT

3-31-23 BT

5-2-23 BT

5-4-23/AS

SCALE

As Noted

FILE

**2022/Starbucks/Locations/
Hanover MA/22-60327/
SB Hanover MA 22-60327**

DESIGN SPECIFICATIONS ACCEPTED BY:

EST: CLIENT:

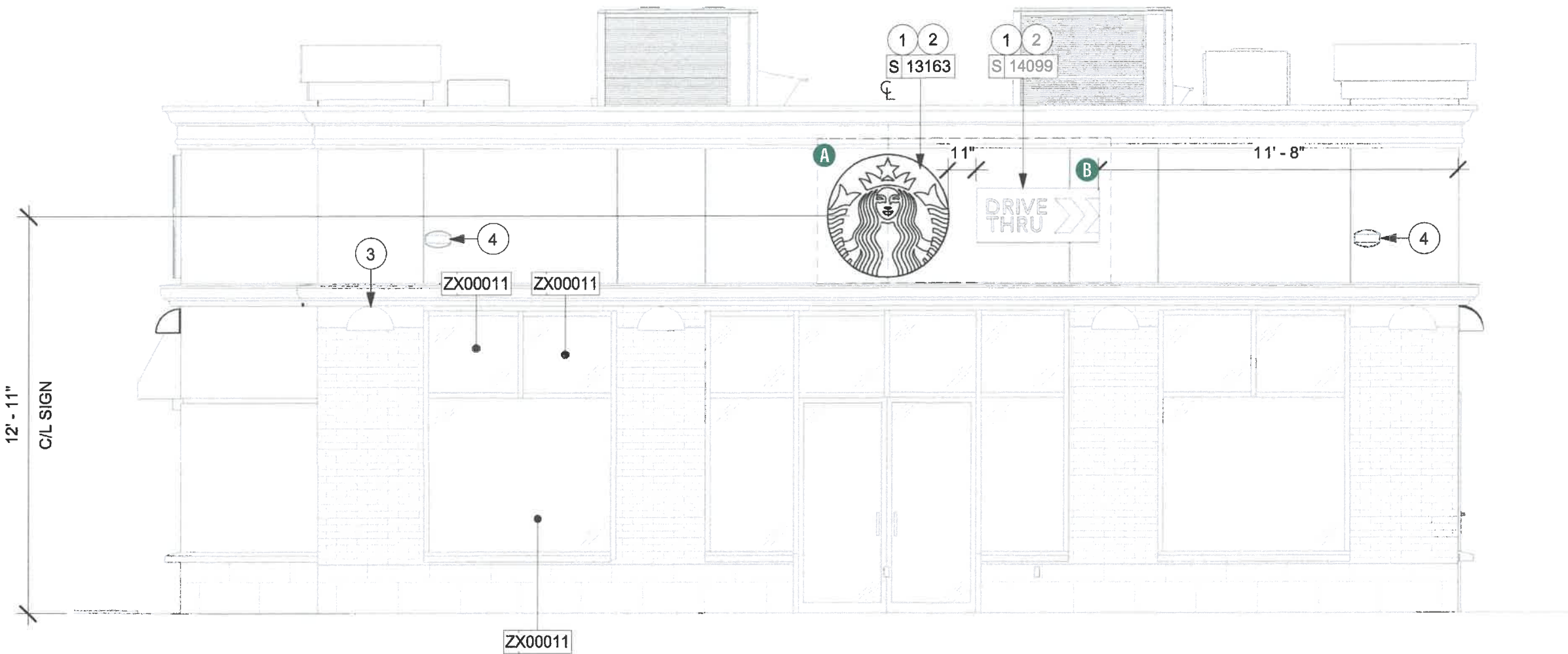
SLS/PM: LANDLORD:

THE INTENT OF THIS DRAWING IS TO SHOW A CONCEPTUAL REPRESENTATION OF THE PROPOSED SIGNAGE. DUE TO VARIATIONS IN PRINTING DEVICES AND SUBSTRATES, THE FINISHED PRODUCT MAY DIFFER SLIGHTLY FROM DRAWING.



ELEVATION

- A 48" SIREN
- B DT WALL CABINET
- C DIRECTIONAL TY/EO
- D DIRECTIONAL DT
- E DOS
- F MENU BOARD
- G CLEARANCE BAR



SOUTH EXTERIOR ELEVATION

Scale: 1/4" = 1'-0"



HILTONDISPLAYS
125 HILLSIDE DRIVE • GREENVILLE SC 29607
P 800 353 9132 • F 864 242 2204
www.hiltondisplays.com

QID 22-60327

JOB NAME

Starbucks 11630

LOCATION

1972 Washington St.
Hanover, MA 02339

CUSTOMER CONTACT

SALESMAN / PM

Joe Nolasco

DESIGNER

Brady Taylor

DWG. DATE

4-4-22

REV. DATE / REVISION

4-6-22 BT

3-31-23 BT

5-2-23 BT

5-4-23/AS

SCALE

As Noted

FILE

2022/Starbucks/Locations/
Hanover MA/22-60327/
SB Hanover MA 22-60327

DESIGN SPECIFICATIONS ACCEPTED BY:

EST: CLIENT:

SLS/PM: LANDLORD:

THE INTENT OF THIS DRAWING IS TO SHOW A CONCEPTUAL REPRESENTATION OF THE PROPOSED SIGNAGE. DUE TO VARIATIONS IN PRINTING DEVICES AND SUBSTRATES, THE FINISHED PRODUCT MAY DIFFER SLIGHTLY FROM DRAWING.



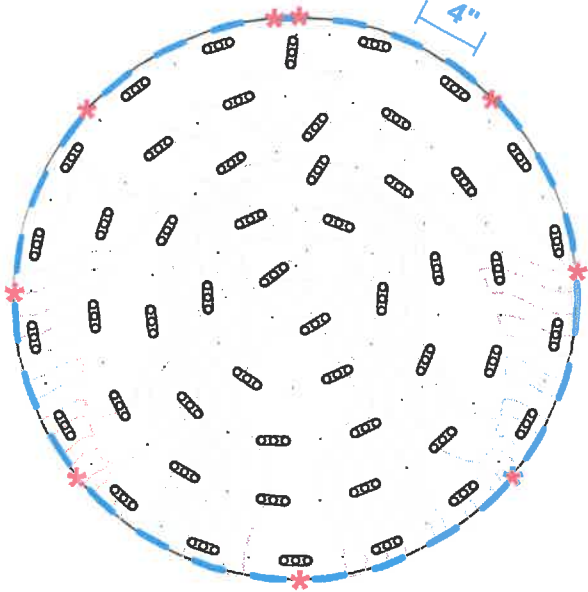
S/F EXTERIOR TRIMLESS FLEX FACE SIREN WALL SIGN

Qty. 1

SBC-S13163-48-FF

A

Excellart Face Retention
clips spaced at
4" on center.



50

* #6 PAN HEAD SCREWS

- 1) ACTUAL CHANNEL LETTER POPULATION AND PRODUCT PLACEMENT MAY VARY FROM THIS LAYOUT
- 2) PRISM ENLIGHTEN WHITE 6500K LAID OUT AT 1.5 MODULES PER FOOT, 5.0" ON CENTER
- 3) EACH 60W3 POWER SUPPLY CAN RUN UP TO 72 PRISM ENLIGHTEN WHITE 6500K MODULES
- 4) LAYOUT BASED ON A 2.125" CAN DEPTH
- 5) DIMENSIONS ARE IN INCHES UNLESS STATED OTHERWISE
- 6) 701269-6WEJ1-MB WATTS PER MODULE: .75
- 7) PRIMARY SYSTEM POWER: 46.88 WATTS
- 8) LED MODULE POWER USAGE (secondary): 57.90 WATTS

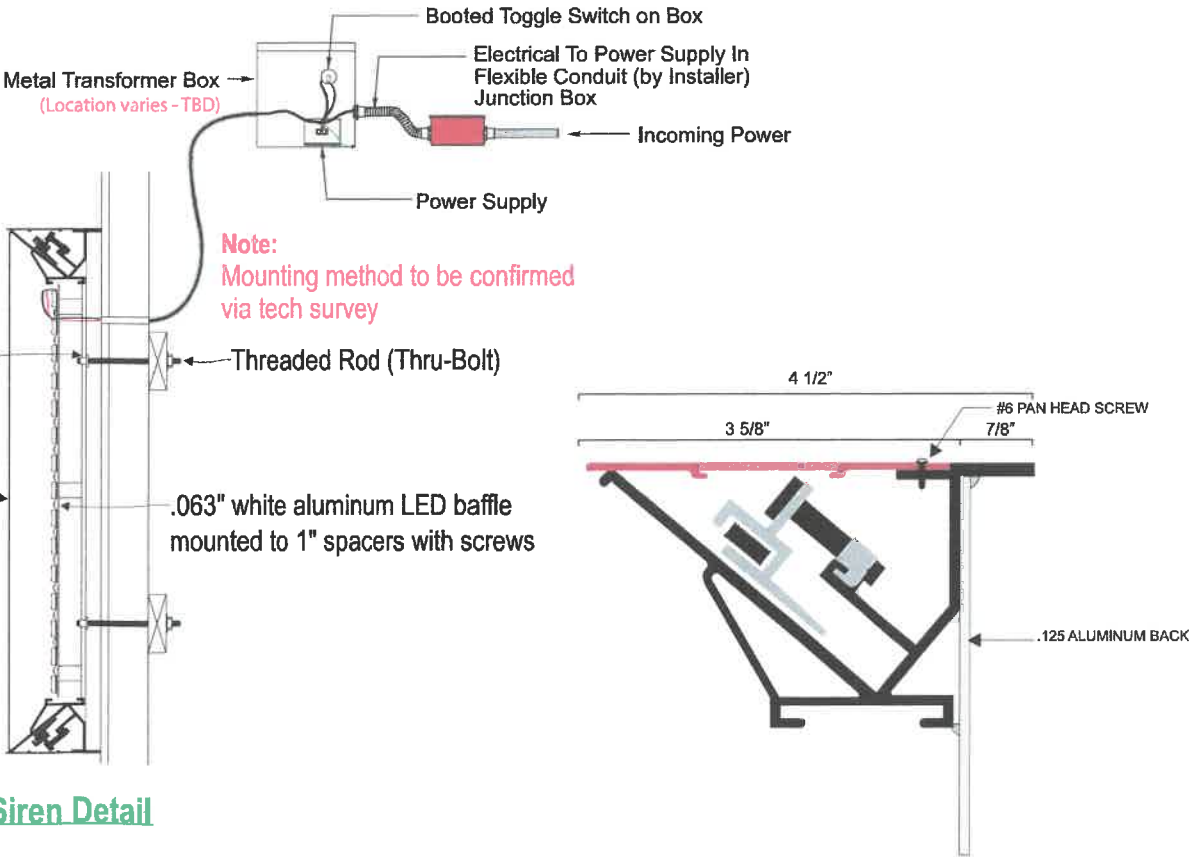
ESTIMATED PRODUCT B.O.M. PER SIGN:
50 Each Prism Enlighten White 6500K Modules - 34'
PN: 701269-6WEJ1-MB
1 Each 60C2 (Damp/Dry locations) or 60W3 (Wet location) 60W Power Supply 12VDC
1 Each 100' Roll of Jacketed Cable

1 FRONT VIEW

Scale: 3/4" = 1' (11x17 Paper)

Specifications:

- A Single face internally illuminated Excellart EC-Flex Standard flex face cabinet with bleed trim cover.
- B White 3M 19 oz Panagraphics III Flex Faces with 3M 3630-126 Dark Emerald Green vinyl. Face retention clips spaced every 4".
- C Interior of cabinet painted reflective white and exterior painted satin black.
- D Internally illuminated with 6500K Sloan Prism Enlighten LEDs with remote power supply.
- E 1/4" drain holes located at the bottom of cabinet as required by UL 48 for Electric Signs.
- F Drain holes to be covered with drain hole covers to reduce light leaks.



Siren Detail

Excellart EC-Flex Standard with Bleed Trim Cover



HILTONDISPLAYS
125 HILLSIDE DRIVE • GREENVILLE SC 29607
P 800 353 9132 • F 864 242 2204
www.hiltondisplays.com

QID 22-60327

JOB NAME

Starbucks 11630

LOCATION

1972 Washington St.
Hanover, MA 02339

CUSTOMER CONTACT

SALESMAN / PM

Joe Nolasco

DESIGNER

Brady Taylor

DWG. DATE

4-4-22

REV. DATE / REVISION

4-6-22 BT

3-31-23 BT

5-2-23 BT

5-4-23/AS

SCALE

As Noted

FILE

2022/Starbucks/Locations/
Hanover MA/22-60327/
SB Hanover MA 22-60327

DESIGN SPECIFICATIONS ACCEPTED BY:

EST: CLIENT:

SLS/PM: LANDLORD:

THE INTENT OF THIS DRAWING IS TO SHOW A CONCEPTUAL REPRESENTATION OF THE PROPOSED SIGNAGE. DUE TO VARIATIONS IN PRINTING DEVICES AND SUBSTRATES, THE FINISHED PRODUCT MAY DIFFER SLIGHTLY FROM DRAWING.

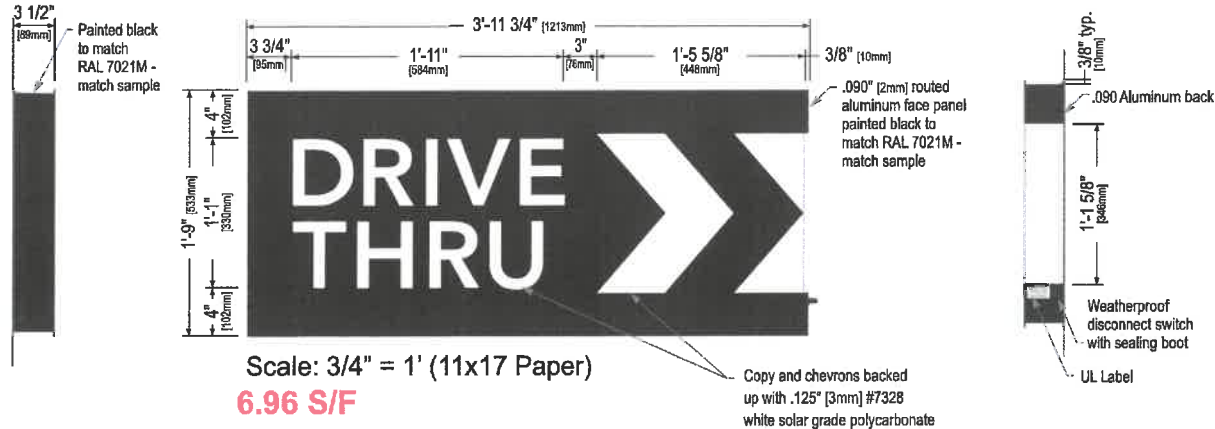


COLOR LEGEND		
PMS/PAINT	VINYL	
PMS 3425 C	3M 3630-126	
SATIN BLACK	NA	
PMS WHITE	NA	

48" DT WALL SIGN-RH

Qty. 1 SBC-S14099-SL

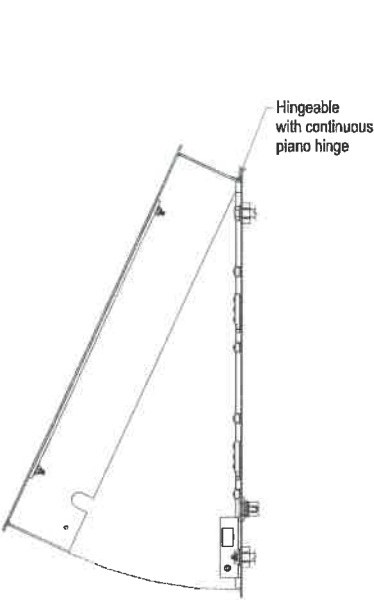
B



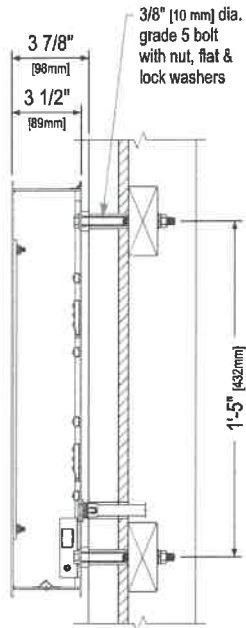
Left Side View

Front Elevation View

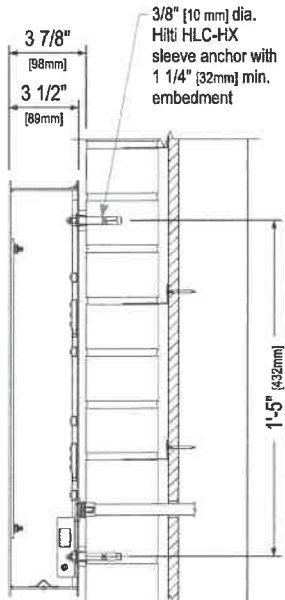
Right Side View



Service Position View
NOT TO SCALE



Section View at Installation Detail
NOT TO SCALE



Brick wall

Sign Specifications:

Cabinet:

- Fabricated .090" [2mm] aluminum housing painted black to match RAL 7021M with 3M #180-10 white vinyl end cap as shown.
- Directional copy and chevrons backed up with .125" white polycarb. All polycarb face elements to be attached to aluminum face panel with weld studs.
- Welded aluminum construction with no visible fasteners. Fasteners retaining the hinged face will be located on the bottom such that they are not visible. All fasteners used in the assembly of internal components shall be coated to prevent corrosion.
- Internal structure of cabinet shall be per approved shop drawings.
- Graphic elements are internally illuminated using Sloan Prism Enlighten LEDs. LED's to be mounted on back panel with self-contained power supply. All electrical components are removable for service.

Regulatory:

- Sign must meet all regulations in the National Electric Code as well as any local or state electrical codes.
 - As per NEC 600.6, sign is equipped with a service disconnect switch.
 - Sign must be listed as an Electric Sign per Underwriters Laboratories UL48 and/or CSA and bear the appropriate UL, CUL or CSA relevant certification marks.
- Primary power by electrical contractor per NEC.

Size	Sq. Ft. ¹	Sq. Ft. ²	Volts	Amps
21"	4.52	6.96	120/277	0.85

1: Figured as illuminated center part
2: Figured as complete signage



HILTONDISPLAYS
125 HILLSIDE DRIVE • GREENVILLE SC 29607
P 800 353 9132 • F 864 242 2204
www.hiltondisplays.com

QID 22-60327

JOB NAME

Starbucks 11630

LOCATION

1972 Washington St.
Hanover, MA 02339

CUSTOMER CONTACT

SALESMAN / PM

Joe Nolasco

DESIGNER

Brady Taylor

DWG. DATE

4-4-22

REV. DATE / REVISION

4-6-22 BT

3-31-23 BT

5-2-23 BT

5-4-23/AS

SCALE

As Noted

FILE

2022/Starbucks/Locations/
Hanover MA/22-60327/
SB Hanover MA 22-60327

DESIGN SPECIFICATIONS ACCEPTED BY:

EST: CLIENT:

SLS/PM: LANDLORD:

THE INTENT OF THIS DRAWING IS TO SHOW A CONCEPTUAL REPRESENTATION OF THE PROPOSED SIGNAGE. DUE TO VARIATIONS IN PRINTING DEVICES AND SUBSTRATES, THE FINISHED PRODUCT MAY DIFFER SLIGHTLY FROM DRAWING.

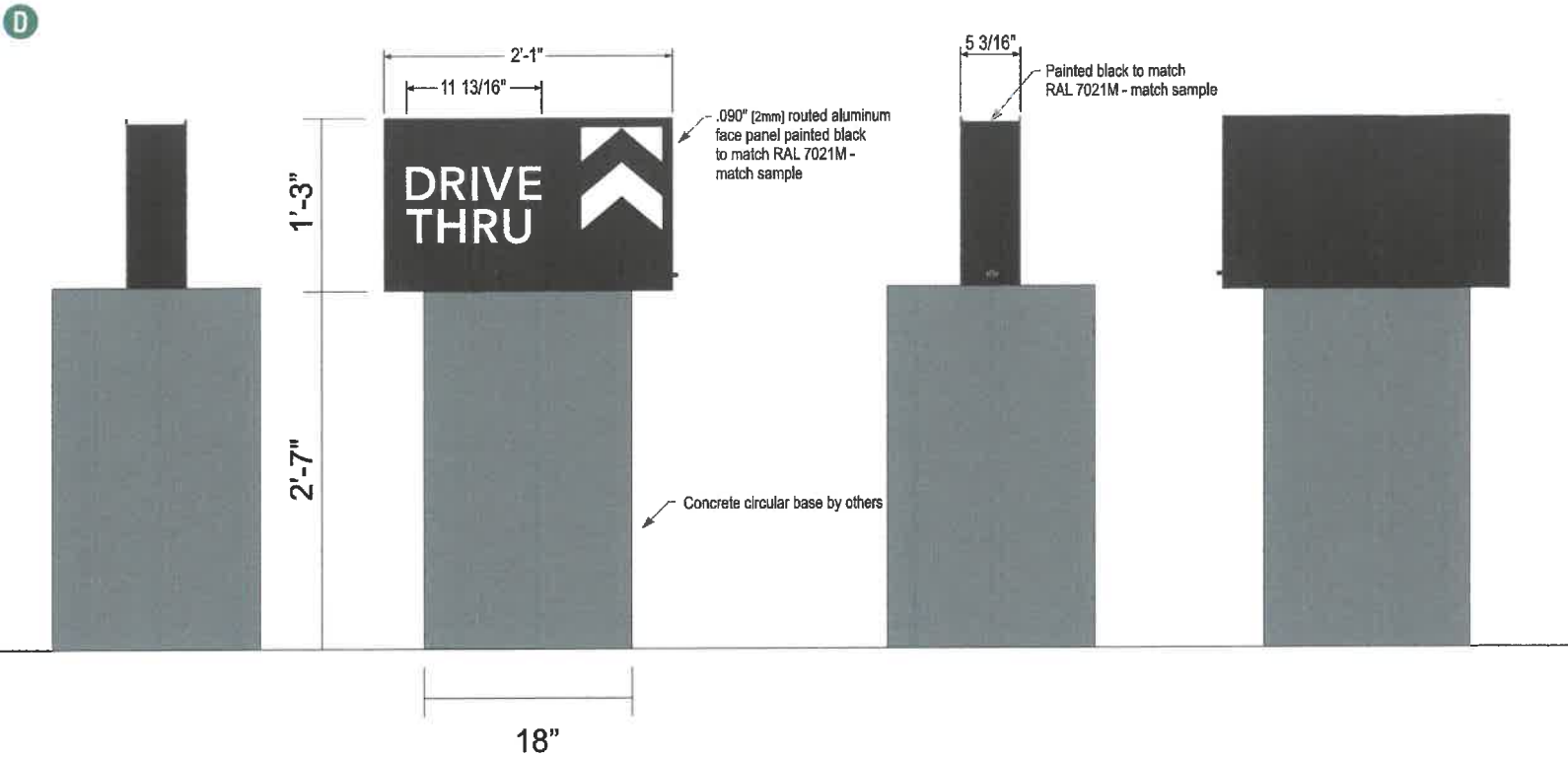


COLOR LEGEND	
PMS/PAINT	VINYL
PMS 3425 C	3M 3630-76
RAL 7021M	3M 3630-22
PMS WHITE	3M 3630-20/ 7725-10 TRANSLUCENT OPAQUE
PMS 369 C	NA
REFL. WHITE	3M 680-10

46" ILLUMINATED DIRECTIONAL < DT/DT> - No Logo

Qty. 1

SBC-

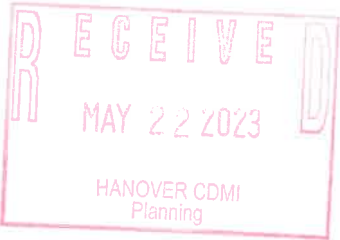


Scale: 1:16

Sign Specifications:

Fabricated .090" Aluminum cabinet painted black to match RAL 7021 with white end cap as shown. Directional copy and chevrons backed up with 1/8" white polycarbonate. All polycarbonate face elements to be attached to interior face panels with welded studs. All interior portions of sign cabinet painted white. Graphic elements illuminated with Sloan Prism Enlighten LEDs. LEDs mounted on internal baffle with self contained LED power supply. All components accessible through face of cabinet.

Support:
Support structure to be circular concrete base Plate to be constructed to be retro-fittable to existing sign foundations. All foundations new and used to be analyzed for suitability and must meet all local city or state code regulations.



HILTONDISPLAYS

125 HILLSIDE DRIVE • GREENVILLE SC 29607
P 800 353 9132 • F 864 242 2204
www.hiltondisplays.com

QID 22-60327

JOB NAME

Starbucks 11630

LOCATION

**1972 Washington St.
Hanover, MA 02339**

CUSTOMER CONTACT

SALESMAN / PM

Joe Nolasco

DESIGNER

Brady Taylor

DWG. DATE

4-4-22

REV. DATE / REVISION

4-6-22 BT

3-31-23 BT

5-2-23 BT

5-4-23/AS

SCALE

As Noted

FILE

**2022/Starbucks/Locations/
Hanover MA/22-60327/
SB Hanover MA 22-60327**

DESIGN SPECIFICATIONS ACCEPTED BY:

EST: CLIENT:

SLS/PM: LANDLORD:

THE INTENT OF THIS DRAWING IS TO SHOW A CONCEPTUAL REPRESENTATION OF THE PROPOSED SIGNAGE. DUE TO VARIATIONS IN PRINTING DEVICES AND SUBSTRATES, THE FINISHED PRODUCT MAY DIFFER SLIGHTLY FROM DRAWING.



COLOR LEGEND		
	PMS/PAINT	VINYL
	PMS 3425 C	3M 3630-76
	RAL 7021M	3M 3630-22
	PMS WHITE	3M 3630-20/ 7725-10 TRANSLUCENT OPAQUE
	PMS 369 C	NA
	REFL. WHITE	3M 680-10

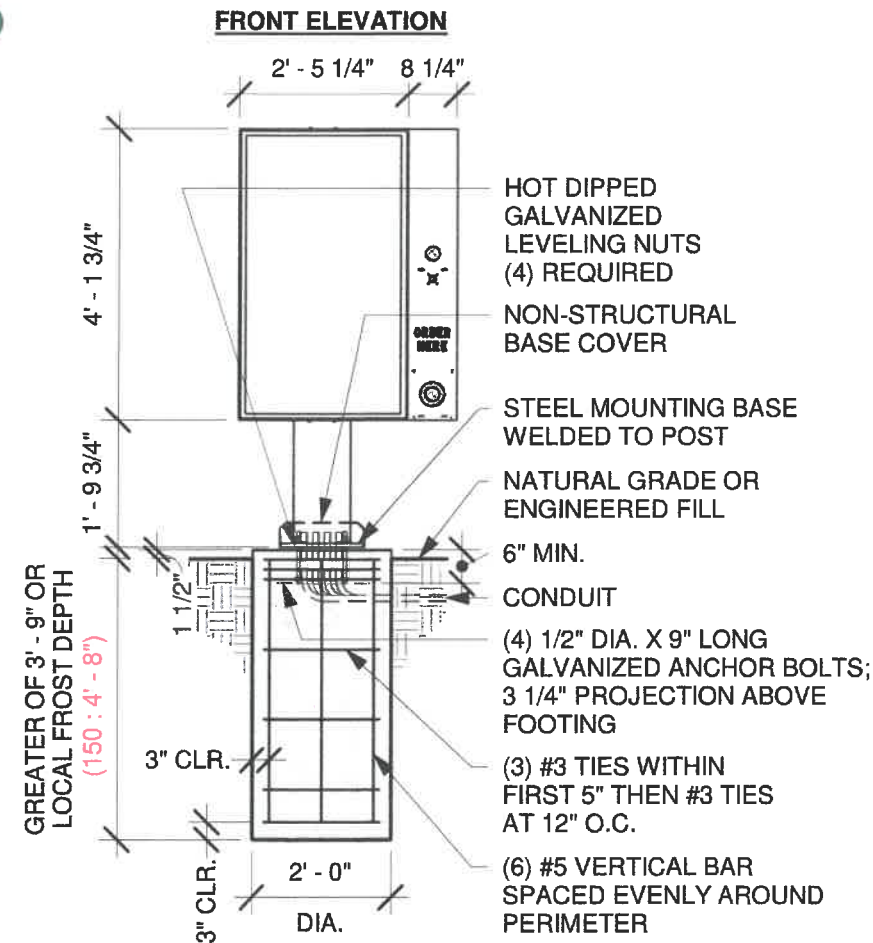
Size	Sq. Ft. ¹	Sq. Ft. ²	Volts	Amps
46" (1168mm)	2.60	8.31	120	0.85

SPECS TBD

DOS - INSTALL ONLY **Note:** - All steel shall be galvanized

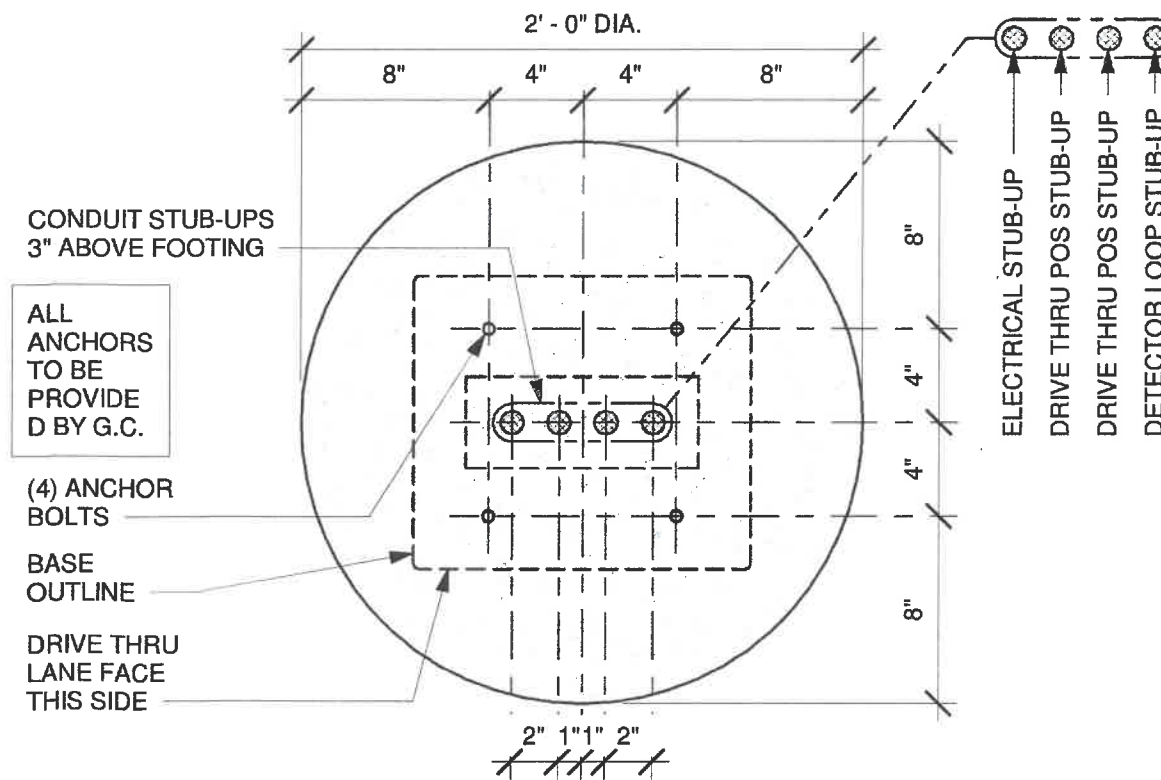
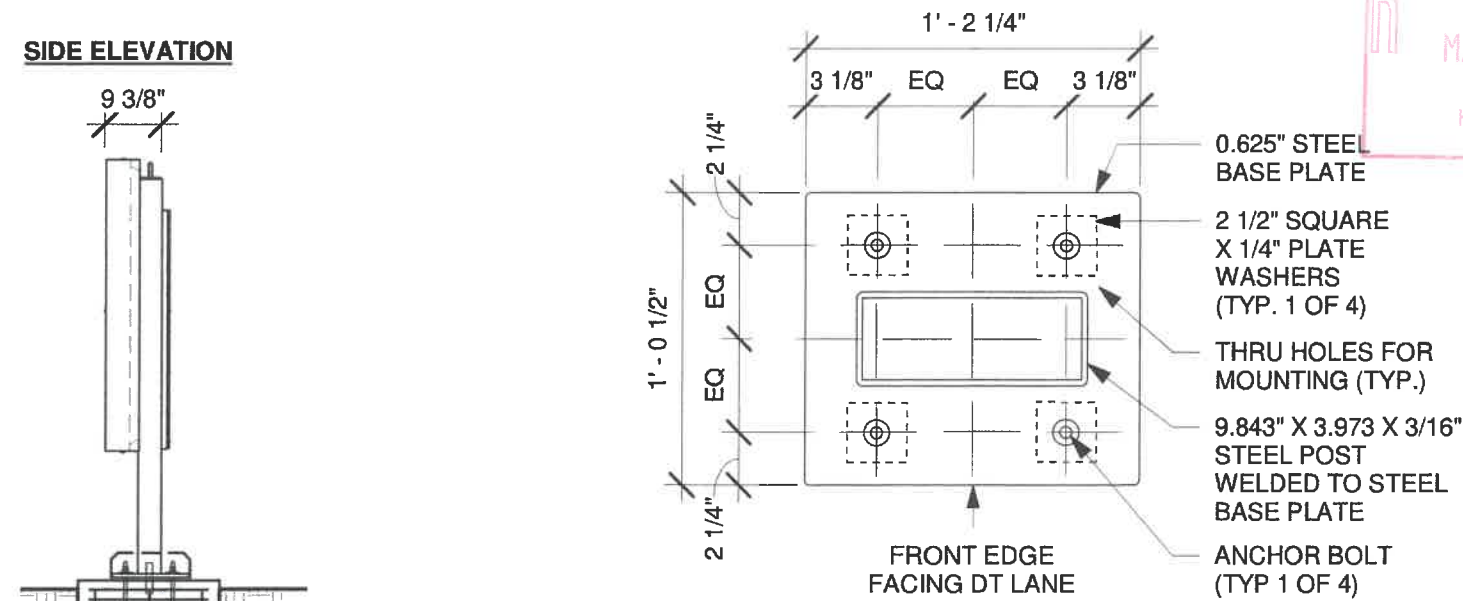
Qty. 1

E



DT DIGITAL ORDER SCREEN POST GROUND FOOTING

Scale: 3/8" = 1'-0"



HILTONDISPLAYS
125 HILLSIDE DRIVE • GREENVILLE SC 29607
P 800 353 9132 • F 864 242 2204
www.hiltondisplays.com

QID 22-60327

JOB NAME

Starbucks 11630

LOCATION

1972 Washington St.
Hanover, MA 02339

CUSTOMER CONTACT

SALESMAN / PM

Joe Nolasco

DESIGNER

Brady Taylor

DWG. DATE

4-4-22

REV. DATE / REVISION

4-6-22 BT

3-31-23 BT

5-2-23 BT

5-4-23/AS

SCALE

As Noted

FILE

2022/Starbucks/Locations/
Hanover MA/22-60327/
SB Hanover MA 22-60327

DESIGN SPECIFICATIONS ACCEPTED BY:

EST: CLIENT:

SLS/PM: LANDLORD:

THE INTENT OF THIS DRAWING IS TO SHOW A CONCEPTUAL REPRESENTATION OF THE PROPOSED SIGNAGE. DUE TO VARIATIONS IN PRINTING DEVICES AND SUBSTRATES, THE FINISHED PRODUCT MAY DIFFER SLIGHTLY FROM DRAWING.

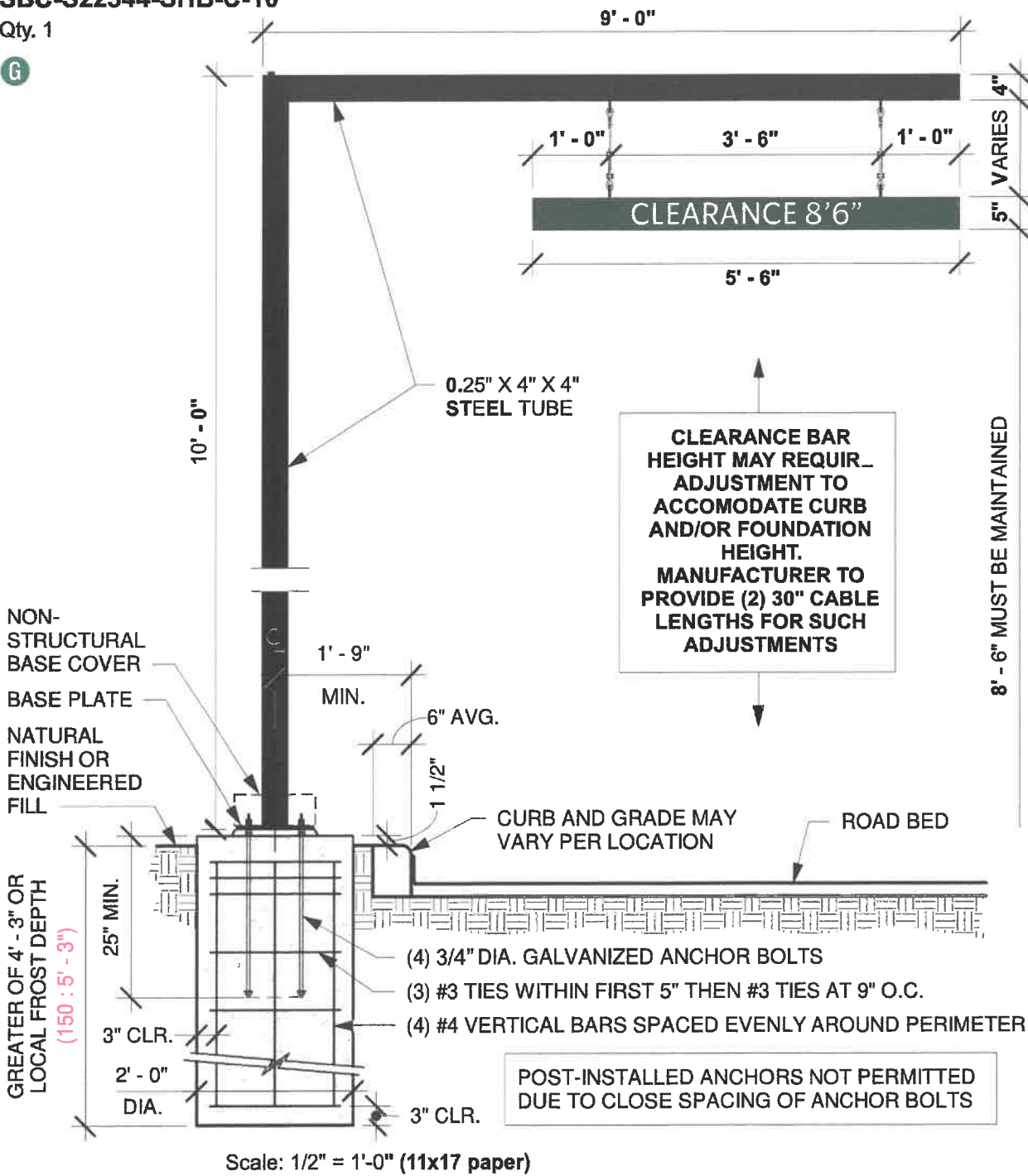


REVOLUTION CLEARANCE BAR

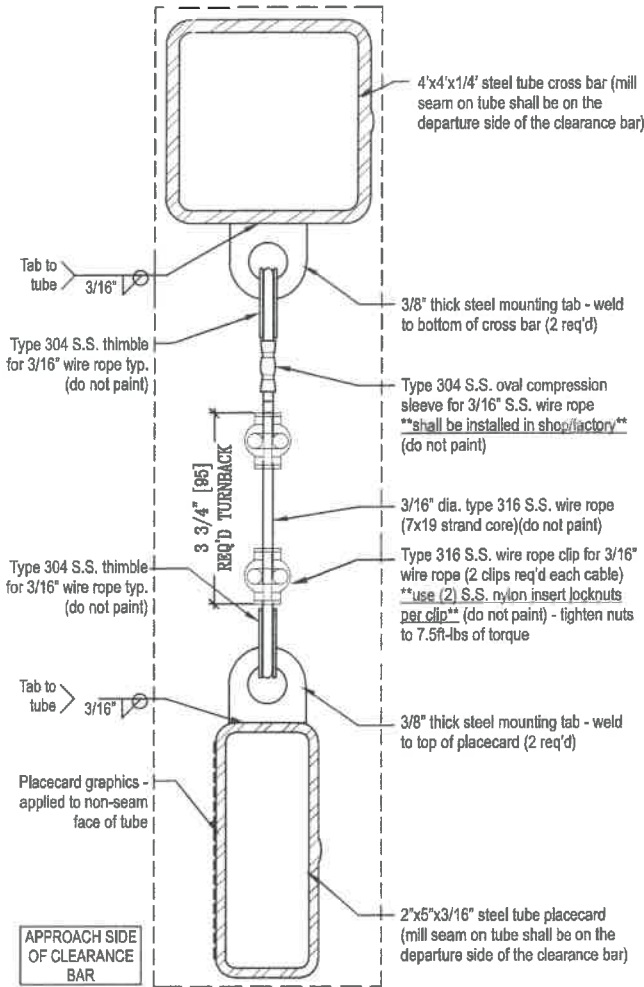
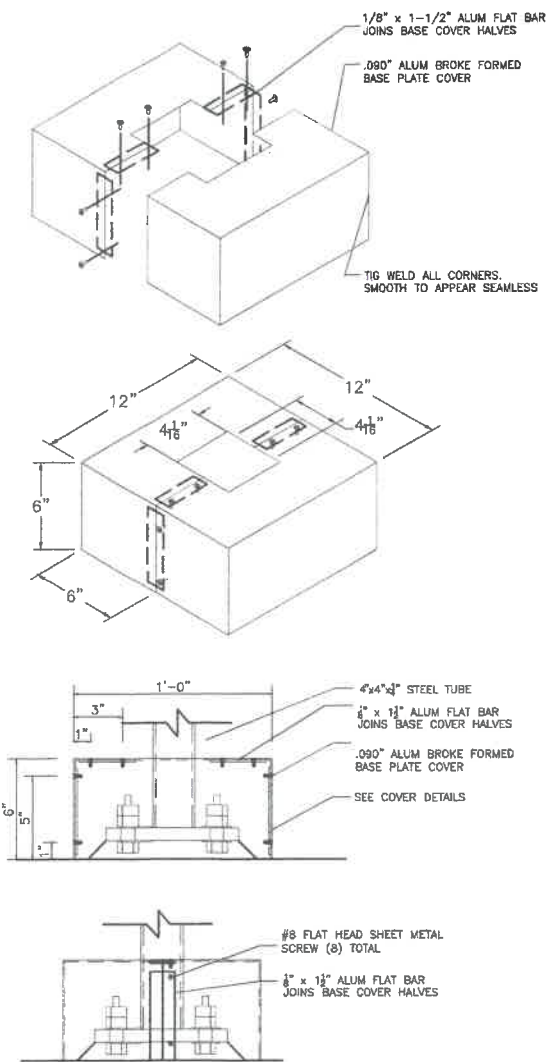
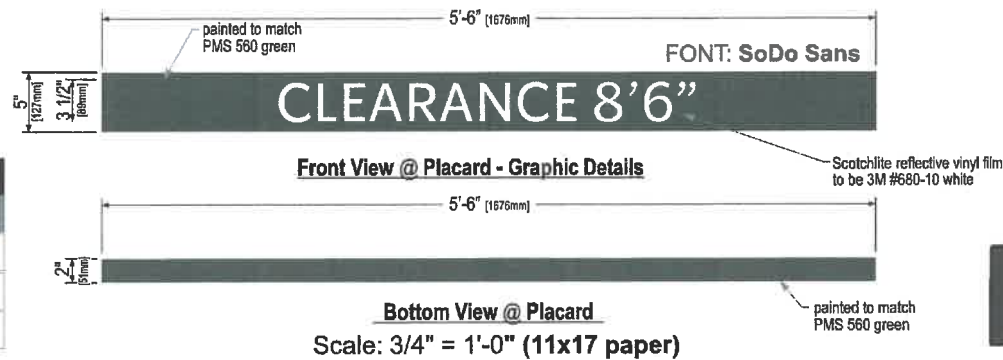
SBC-S22544-SHB-C-10

Qty. 1

G

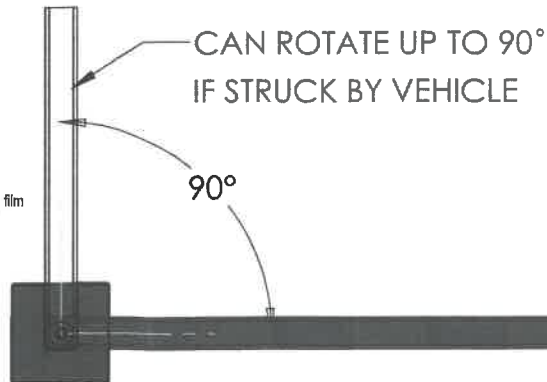


COLOR LEGEND	
PMS/PAINT	VINYL
PMS 560 C	NA
PSB 6865/ SATIN BLACK	3M 3630-22
REFL. WHITE	3M 680-10



End Section View

ASSUMED CONDITIONS	
DESIGN LOADS	
<ul style="list-style-type: none"> 115 MPH wind load (150 MPH Wind Load) Category II, Exposure C Est. Combined Weight of Canopy & DOS: 993 Lbs. Concrete Strength: MN 3000 PSI @ 28 Days 2012 International Building Code, ASCE 7-10 Vertical Soil Bearing Pressure: 2000 PSF 	
Rotate Footing Bolt pattern Relative To Drive Lane Per Site Plan & Signage Configuration Details.	
Route Conduit Per Electrical Site Plan Provide 3\" Stub-Up	GC Responsible For Foundations & Footings On All Menu Boards & Drive-Thru Elements. Signage Vendor To Supply Templates & Install Menu Boards Only.



Dimensions in Red Are For 150 MPH Wind Load

HILTONDISPLAYS

125 HILLSIDE DRIVE • GREENVILLE SC 29607
 P 800 353 9132 • F 864 242 2204
 www.hiltondisplays.com

QID 22-60327

JOB NAME

Starbucks 11630

LOCATION

1972 Washington St.
 Hanover, MA 02339

CUSTOMER CONTACT

SALESMAN / PM

Joe Nolasco

DESIGNER

Brady Taylor

DWG. DATE

4-4-22

REV. DATE / REVISION

4-6-22 BT

3-31-23 BT

5-2-23 BT

5-4-23/AS

SCALE

As Noted

FILE

2022/Starbucks/Locations/
 Hanover MA/22-60327/
 SB Hanover MA 22-60327

DESIGN SPECIFICATIONS ACCEPTED BY:

EST: CLIENT:

SLS/PM: LANDLORD:

THE INTENT OF THIS DRAWING IS TO SHOW A CONCEPTUAL REPRESENTATION OF THE PROPOSED SIGNAGE. DUE TO VARIATIONS IN PRINTING DEVICES AND SUBSTRATES, THE FINISHED PRODUCT MAY DIFFER SLIGHTLY FROM DRAWING.

