

SITE DEVELOPMENT PLANS

FOR

TACO BELL

BETWEEN 1167 & 1207 WASHINGTON ST.
HANOVER, MA

SEPTEMBER 26, 2022

SHEET INDEX						
SHEET No.	DESCRIPTION	LATEST REVISED DATE	CONSTRUCTION	REVISIONS		
1	COVER SHEET	11/27/23				
2	OVERALL LAYOUT PLAN	11/27/23				
3	EXISTING CONDITIONS PLAN	11/27/23				
4	LAYOUT PLAN	11/27/23				
5	GRADING PLAN	11/27/23				
6	SEWER, DRAIN & UTILITY PLAN	11/27/23				
7	DETAIL SHEET	11/27/23				
8	DETAIL SHEET	11/27/23				

OWNER/ APPLICANT:
HANOVER WASHINGTON LIMITED PARTNERSHIP
625 MT. AUBURN ST.
SUITE 210
CAMBRIDGE, MA 02138

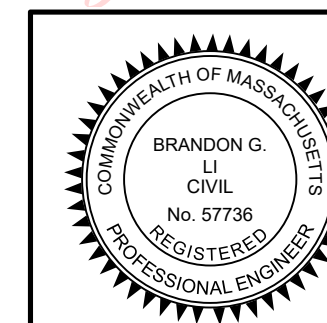
CIVIL ENGINEERS:
KELLY ENGINEERING GROUP, INC.
0 CAMPANELLI DRIVE
BRAINTREE, MA 02184

ARCHITECTS:
GLMV ARCHITECTURE
1525 E. DOUGLAS AVENUE
WICHITA, KS 67211



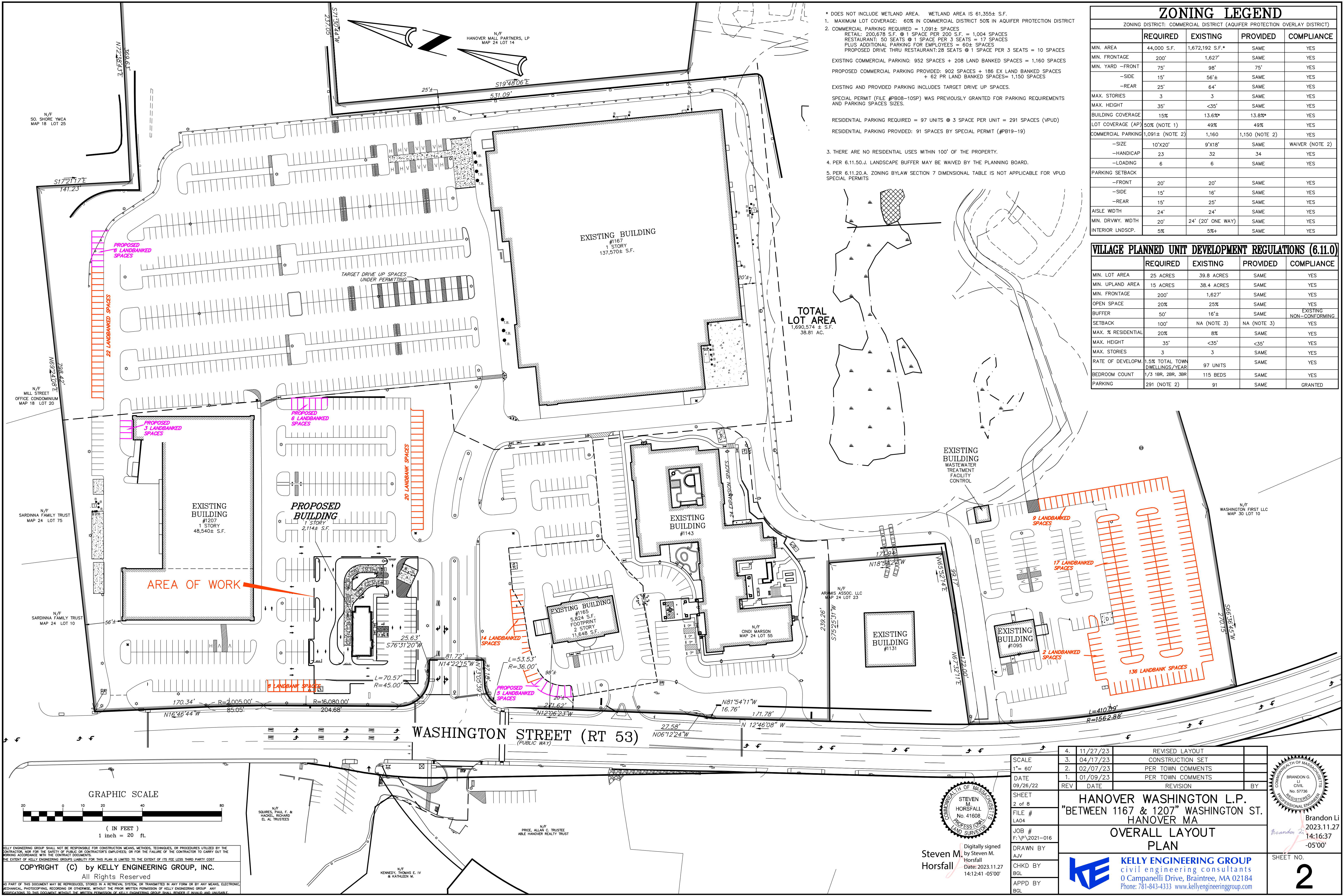
LOCATION MAP

Brandon Li
2023.11.27
13:58:04
-05'00'



SCALE	JOB #
NA	F:\P\2021-016
DATE	DRAWN BY
11/27/23	AJV
SHEET	CHKD BY
1 of 8	BGL
FILE #	APPD BY
TS04	BGL

BETWEEN 1167 & 1207 WASHINGTON ST. HANOVER, MA		SHEET NO.
 KELLY ENGINEERING GROUP civil engineering consultants 0 Campanelli Drive, Braintree, MA 02184 Phone: 781-843-4333 www.kellyengineeringgroup.com		1



* DOES NOT INCLUDE WETLAND AREA. WETLAND AREA IS 61,355± S.F.

1. MAXIMUM LOT COVERAGE: 60% IN COMMERCIAL DISTRICT 50% IN AQUIFER PROTECTION DISTRICT

2. COMMERCIAL PARKING REQUIRED = 1,091± SPACES
RETAIL: 200,678 S.F. @ 1 SPACE PER 200 S.F. = 1,004 SPACES
RESTAURANT: 50 SEATS @ 1 SPACE PER 3 SEATS = 17 SPACES
PLUS ADDITIONAL PARKING FOR EMPLOYEES = 60± SPACES
PROPOSED DRIVE THRU RESTAURANT: 28 SEATS @ 1 SPACE PER 3 SEATS = 10 SPACES

EXISTING COMMERCIAL PARKING: 952 SPACES + 208 LAND BANKED SPACES = 1,160 SPACES
PROPOSED COMMERCIAL PARKING PROVIDED: 902 SPACES + 186 EX LAND BANKED SPACES + 62 PR LAND BANKED SPACES = 1,150 SPACES

EXISTING AND PROVIDED PARKING INCLUDES TARGET DRIVE UP SPACES.

SPECIAL PERMIT (FILE #PB08-10SP) WAS PREVIOUSLY GRANTED FOR PARKING REQUIREMENTS AND PARKING SPACES SIZES.

RESIDENTIAL PARKING REQUIRED = 97 UNITS @ 3 SPACE PER UNIT = 291 SPACES (VPUD)
RESIDENTIAL PARKING PROVIDED: 91 SPACES BY SPECIAL PERMIT (#PB19-19)

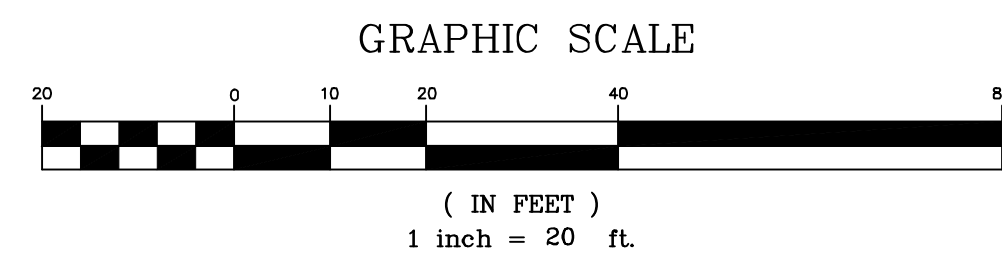
3. THERE ARE NO RESIDENTIAL USES WITHIN 100' OF THE PROPERTY.

4. PER 6.11.50.J. LANDSCAPE BUFFER MAY BE WAIVED BY THE PLANNING BOARD.

5. PER 6.11.20.A. ZONING BYLAW SECTION 7 DIMENSIONAL TABLE IS NOT APPLICABLE FOR VPUD SPECIAL PERMITS.

ZONING LEGEND				
ZONING DISTRICT: COMMERCIAL DISTRICT (AQUIFER PROTECTION OVERLAY DISTRICT)				
	REQUIRED	EXISTING	PROVIDED	COMPLIANCE
MIN. AREA	44,000 S.F.	1,672,192 S.F.*	SAME	YES
MIN. FRONTAGE	200'	1,627'	SAME	YES
MIN. YARD -FRONT	75'	98'	75'	YES
-SIDE	15'	56'±	SAME	YES
-REAR	25'	64'	SAME	YES
MAX. STORIES	3	3	SAME	YES
MAX. HEIGHT	35'	<35'	SAME	YES
BUILDING COVERAGE	15%	13.6%*	13.8%*	YES
LOT COVERAGE (AP)	50% (NOTE 1)	49%	49%	YES
COMMERCIAL PARKING	1,091± (NOTE 2)	1,160	1,150 (NOTE 2)	YES
-SIZE	10'X20'	9'X18'	SAME	WAIVER (NOTE 2)
-HANDICAP	23	32	34	YES
-LOADING	6	6	SAME	YES
PARKING SETBACK				
-FRONT	20'	20'	SAME	YES
-SIDE	15'	16'	SAME	YES
-REAR	15'	25'	SAME	YES
aisle width	24'	24'	SAME	YES
MIN. DRVWY. WIDTH	20'	24' (20' ONE WAY)	SAME	YES
INTERIOR LANDSCAP.	5%	5%+	SAME	YES

VILLAGE PLANNED UNIT DEVELOPMENT REGULATIONS (6.11.0)				
	REQUIRED	EXISTING	PROVIDED	COMPLIANCE
MIN. LOT AREA	25 ACRES	39.8 ACRES	SAME	YES
MIN. UPLAND AREA	15 ACRES	38.4 ACRES	SAME	YES
MIN. FRONTAGE	200'	1,627'	SAME	YES
OPEN SPACE	20%	25%	SAME	YES
BUFFER	50'	16'±	SAME	EXISTING NON-COMFORMING
SETBACK	100'	NA (NOTE 3)	NA (NOTE 3)	YES
MAX. % RESIDENTIAL	20%	8%	SAME	YES
MAX. HEIGHT	35'	<35'	SAME	YES
MAX. STORIES	3	3	SAME	YES
RATE OF DEVELOPM.	1.5% TOTAL TOWN DWELLINGS/YEAR	97 UNITS	SAME	YES
BEDROOM COUNT	1/3 1BR, 2BR, 3BR	115 BEDS	SAME	YES
PARKING	291 (NOTE 2)	91	SAME	GRANTED



KELLY ENGINEERING GROUP SHALL NOT BE RESPONSIBLE FOR CONSTRUCTION MEANS, METHODS, TECHNIQUES, OR PROCEDURES UTILIZED BY THE CONTRACTOR, NOR FOR THE SAFETY OF PUBLIC OR CONTRACTOR'S EMPLOYEES, OR FOR THE FAILURE OF THE CONTRACTOR TO CARRY OUT THE WORKING ACCORDANCE WITH THE CONTRACT DOCUMENTS.

THE EXTENT OF KELLY ENGINEERING GROUP'S LIABILITY FOR THIS PLAN IS LIMITED TO THE EXTENT OF ITS FEE LESS THIRD PARTY COST

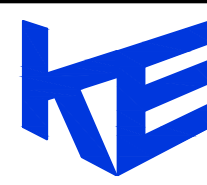
COPYRIGHT (C) by KELLY ENGINEERING GROUP, INC.
All Rights Reserved

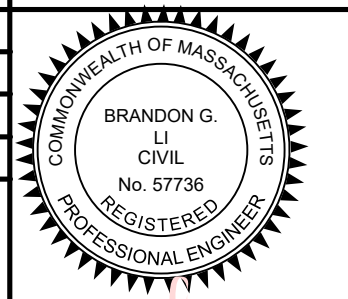
NO PART OF THIS DOCUMENT MAY BE REPRODUCED, STORED IN A RETRIEVAL SYSTEM, OR TRANSMITTED IN ANY FORM OR BY ANY MEANS, ELECTRONIC, MECHANICAL, PHOTOCOPYING, RECORDING OR OTHERWISE, WITHOUT THE PRIOR WRITTEN PERMISSION OF KELLY ENGINEERING GROUP. ANY VIOLATIONS TO THIS DOCUMENT WITHOUT THE WRITTEN PERMISSION OF KELLY ENGINEERING GROUP SHALL SUBJECT THE VIOLATOR TO A FINE.

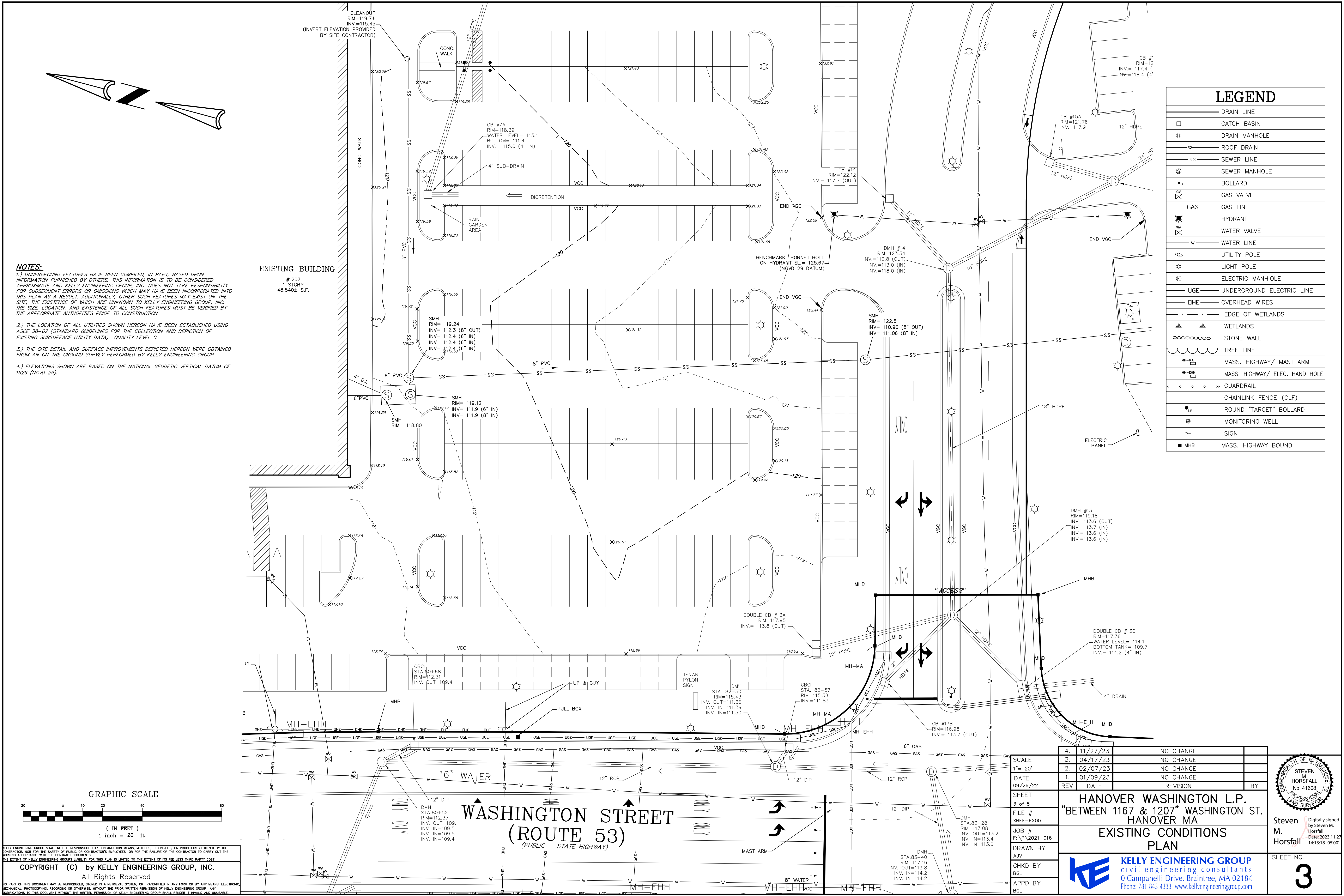


Steven M. Horsfall
Digitally signed by Steven M. Horsfall
Date: 2023.11.27 14:12:41 -05'00'

SCALE	1" = 60'
DATE	09/26/22
SHEET	2 of 8
FILE #	LA04
JOB #	F:\P\2021-016
DRAWN BY	AJV
CHKD BY	BGL
APPD BY	BGL

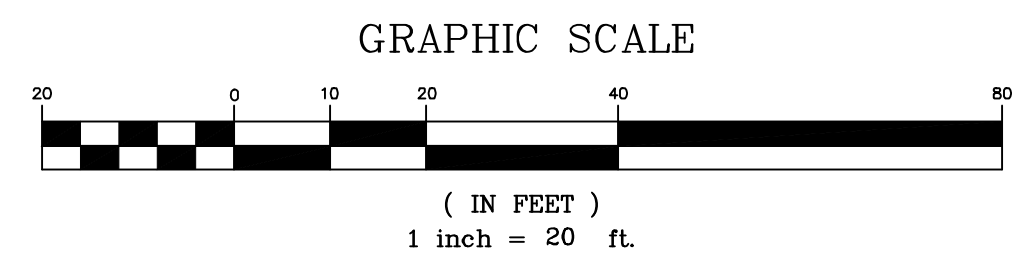
4.	11/27/23	REVISED LAYOUT
3.	04/17/23	CONSTRUCTION SET
2.	02/07/23	PER TOWN COMMENTS
1.	01/09/23	PER TOWN COMMENTS
REV	DATE	REVISION
HANOVER WASHINGTON L.P. "BETWEEN 1167 & 1207" WASHINGTON ST. HANOVER MA OVERALL LAYOUT PLAN		
 KELLY ENGINEERING GROUP civil engineering consultants 0 Campanelli Drive, Braintree, MA 02184 Phone: 781-843-4333 www.kellyengineeringgroup.com		

	Brandon Li 2023.11.27 14:16:37 -05'00'
SHEET NO. 2	



NOTES:
1.) UNDERGROUND FEATURES HAVE BEEN COMPILED, IN PART, BASED UPON INFORMATION FURNISHED BY OTHERS. THIS INFORMATION IS TO BE CONSIDERED APPROXIMATE AND KELLY ENGINEERING GROUP, INC. DOES NOT TAKE RESPONSIBILITY FOR SUBSEQUENT ERRORS OR OMISSIONS WHICH MAY HAVE BEEN INCORPORATED INTO THIS PLAN AS A RESULT. ADDITIONALLY, OTHER SUCH FEATURES MAY EXIST ON THE SITE, THE EXISTENCE OF WHICH ARE UNKNOWN TO KELLY ENGINEERING GROUP, INC. THE SIZE, LOCATION, AND EXISTENCE OF ALL SUCH FEATURES MUST BE VERIFIED BY THE APPROPRIATE AUTHORITIES PRIOR TO CONSTRUCTION.
2.) THE LOCATION OF ALL UTILITIES SHOWN HEREON HAVE BEEN ESTABLISHED USING ASCE 38-02 (STANDARD GUIDELINES FOR THE COLLECTION AND DEPICTION OF EXISTING SUBSURFACE UTILITY DATA) QUALITY LEVEL C.
3.) THE SITE DETAIL AND SURFACE IMPROVEMENTS DEPICTED HEREON WERE OBTAINED FROM AN ON THE GROUND SURVEY PERFORMED BY KELLY ENGINEERING GROUP.
4.) ELEVATIONS SHOWN ARE BASED ON THE NATIONAL GEODETIC VERTICAL DATUM OF 1929 (NGVD 29).

LEGEND	
	DRAIN LINE
	CATCH BASIN
	DRAIN MANHOLE
	ROOF DRAIN
	SEWER LINE
	SEWER MANHOLE
	BOLLARD
	GAS VALVE
	GAS LINE
	HYDRANT
	WATER VALVE
	WATER LINE
	UTILITY POLE
	LIGHT POLE
	ELECTRIC MANHOLE
	UNDERGROUND ELECTRIC LINE
	OVERHEAD WIRES
	EDGE OF WETLANDS
	WETLANDS
	STONE WALL
	TREE LINE
	MASS. HIGHWAY/ MAST ARM
	MASS. HIGHWAY/ ELEC. HAND HOLE
	GUARDRAIL
	CHAINLINK FENCE (CLF)
	ROUND "TARGET" BOLLARD
	MONITORING WELL
	SIGN
	MASS. HIGHWAY BOUND



KELLY ENGINEERING GROUP SHALL NOT BE RESPONSIBLE FOR CONSTRUCTION MEANS, METHODS, TECHNIQUES, OR PROCEDURES UTILIZED BY THE CONTRACTOR, NOR FOR THE SAFETY OF PUBLIC OR CONTRACTOR'S EMPLOYEES; OR FOR THE FAILURE OF THE CONTRACTOR TO CARRY OUT THE WORKING ACCORDANCE WITH THE CONTRACT DOCUMENTS.
THE EXTENT OF KELLY ENGINEERING GROUP'S LIABILITY FOR THIS PLAN IS LIMITED TO THE EXTENT OF ITS FEE LESS THIRD PARTY COST.
COPYRIGHT (C) by KELLY ENGINEERING GROUP, INC.
All Rights Reserved
NO PART OF THIS DOCUMENT MAY BE REPRODUCED, STORED IN A RETRIEVAL SYSTEM, OR TRANSMITTED IN ANY FORM OR BY ANY MEANS, ELECTRONIC, MECHANICAL, PHOTOCOPYING, RECORDING OR OTHERWISE, WITHOUT THE PRIOR WRITTEN PERMISSION OF KELLY ENGINEERING GROUP. ANY VIOLATIONS TO THIS DOCUMENT WITHOUT THE WRITTEN PERMISSION OF KELLY ENGINEERING GROUP SHALL BECAUSE IT IS UNLAWFUL.

SCALE 1" = 20'	4. 11/27/23 NO CHANGE	
DATE 09/26/22	3. 04/17/23 NO CHANGE	
FILE # XREF-EX00	2. 02/07/23 NO CHANGE	
JOB # F:\P\2021-016	1. 01/09/23 NO CHANGE	
DRAWN BY AJV	REV DATE	BY
CHKD BY BGL		
APPD BY BGL		
SHEET 3 of 8		
HANOVER WASHINGTON L.P. "BETWEEN 1167 & 1207" WASHINGTON ST. HANOVER MA		
EXISTING CONDITIONS PLAN		
KELLY ENGINEERING GROUP civil engineering consultants 0 Campanelli Drive, Braintree, MA 02184 Phone: 781-843-4333 www.kellyengineeringgroup.com		

Steven M. Horsfall
Digitally signed by Steven M. Horsfall
Date: 2023.11.27 14:13:18 -0500

SHEET NO. 3

PROPOSED LEGEND

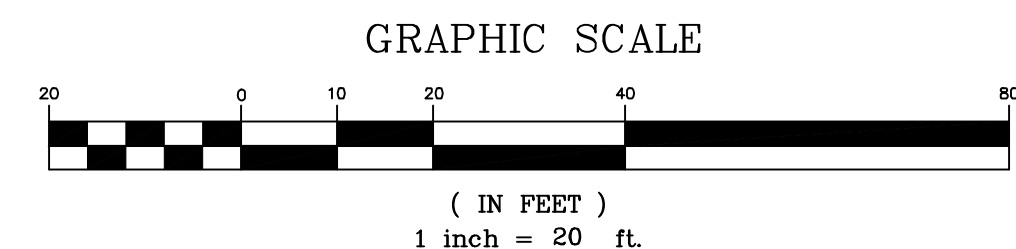
CC	CONCRETE CURB
	HANDICAP SPACE
	VAN HANDICAP SPACE
	HANDICAP RAMP
	CURB STOP
	SAW CUT/ MATCH PAVEMENT LINE
	TRAFFIC FLOW
	SIGN
	SNOW STORAGE
	LIGHT POLES
	WALL MOUNTED LIGHT

EXISTING BUILDING
#1207
1 STORY
48,540± S.F.

AREA OF WORK

NOTE:
REPLACE EXISTING
TREES AND SHRUBS
IN PROPOSED
LANDSCAPE ISLANDS
(TYP.)

NOTE: FOR DETAILS ON TREES,
SHRUBS & GROUNDCOVER SEE
LANDSCAPE PLAN BY KELLY
ENGINEERING GROUP, INC.
LATEST REVISED DATE 7/17/09.



KELLY ENGINEERING GROUP SHALL NOT BE RESPONSIBLE FOR CONSTRUCTION MEANS, METHODS, TECHNIQUES, OR PROCEDURES UTILIZED BY THE CONTRACTOR, NOR FOR THE SAFETY OF PUBLIC OR CONTRACTOR'S EMPLOYEES; OR FOR THE FAILURE OF THE CONTRACTOR TO CARRY OUT THE WORKING ACCORDANCE WITH THE CONTRACT DOCUMENTS.
THE EXTENT OF KELLY ENGINEERING GROUP'S LIABILITY FOR THIS PLAN IS LIMITED TO THE EXTENT OF ITS FEE LESS THIRD PARTY COST

COPYRIGHT (C) by KELLY ENGINEERING GROUP, INC.
All Rights Reserved

NO PART OF THIS DOCUMENT MAY BE REPRODUCED, STORED IN A RETRIEVAL SYSTEM, OR TRANSMITTED IN ANY FORM OR BY ANY MEANS, ELECTRONIC, MECHANICAL, PHOTOCOPYING, RECORDING OR OTHERWISE, WITHOUT THE PRIOR WRITTEN PERMISSION OF KELLY ENGINEERING GROUP. ANY VIOLATIONS TO THIS DOCUMENT WITHOUT THE WRITTEN PERMISSION OF KELLY ENGINEERING GROUP SHALL BECAUSE IT IS UNLAWFUL.

WASHINGTON STREET (RT 53)

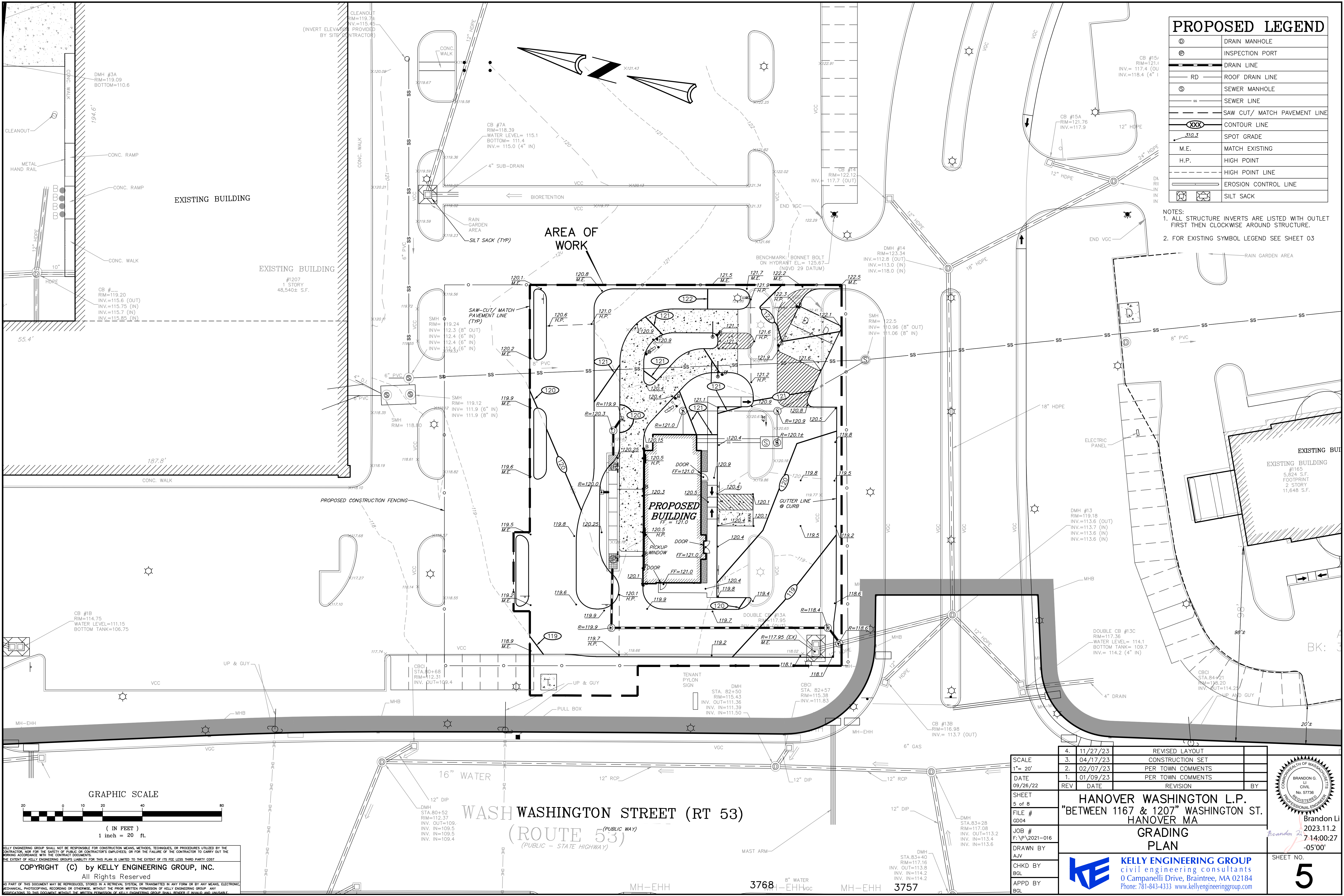
(PUBLIC WAY)

SCALE	4. 11/27/23	REVISED LAYOUT	
1"= 20'	3. 04/17/23	CONSTRUCTION SET	
DATE	2. 02/07/23	PER TOWN COMMENTS	
09/26/22	1. 01/09/23	PER TOWN COMMENTS	
SHEET	REV	DATE	REVISION
4 of 8			
FILE #			
LA04			
JOB #			
F:\P\2021-016			
DRAWN BY			
AJV			
CHKD BY			
BGL			
APPD BY			
BGL			

HANOVER WASHINGTON L.P.
"BETWEEN 1167 & 1207" WASHINGTON ST.
HANOVER MA
LAYOUT
PLAN

KELLY ENGINEERING GROUP
civil engineering consultants
0 Campanelli Drive, Braintree, MA 02184
Phone: 781-843-4333 www.kellyengineeringgroup.com

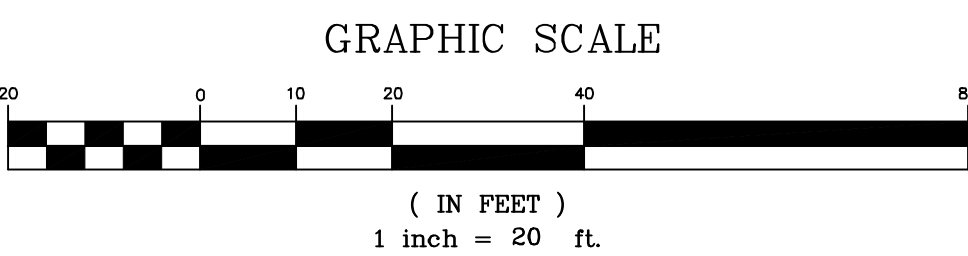
	Brandon Li 2023.11.27 13:59:48 -05'00'
SHEET NO.	4



PROPOSED LEGEND

⊙	DRAIN MANHOLE
⊕	INSPECTION PORT
—	DRAIN LINE
RD	ROOF DRAIN LINE
⊙	SEWER MANHOLE
SS	SEWER LINE
---	SAW CUT/ MATCH PAVEMENT LINE
XXX	CONTOUR LINE
310.3	SPOT GRADE
M.E.	MATCH EXISTING
H.P.	HIGH POINT
---	HIGH POINT LINE
---	EROSION CONTROL LINE
⊠	SILT SACK

- NOTES:
1. ALL STRUCTURE INVERTS ARE LISTED WITH OUTLET FIRST THEN CLOCKWISE AROUND STRUCTURE.
 2. FOR EXISTING SYMBOL LEGEND SEE SHEET 03



KELLY ENGINEERING GROUP SHALL NOT BE RESPONSIBLE FOR CONSTRUCTION MEANS, METHODS, TECHNIQUES, OR PROCEDURES UTILIZED BY THE CONTRACTOR, NOR FOR THE SAFETY OF PUBLIC OR CONTRACTOR'S EMPLOYEES, OR FOR THE FAILURE OF THE CONTRACTOR TO CARRY OUT THE WORKING ACCORDANCE WITH THE CONTRACT DOCUMENTS.

THE EXTENT OF KELLY ENGINEERING GROUP'S LIABILITY FOR THIS PLAN IS LIMITED TO THE EXTENT OF ITS FEE LESS THIRD PARTY COST

COPYRIGHT (C) by KELLY ENGINEERING GROUP, INC.

All Rights Reserved

NO PART OF THIS DOCUMENT MAY BE REPRODUCED, STORED IN A RETRIEVAL SYSTEM, OR TRANSMITTED IN ANY FORM OR BY ANY MEANS, ELECTRONIC, MECHANICAL, PHOTOCOPYING, RECORDING OR OTHERWISE, WITHOUT THE PRIOR WRITTEN PERMISSION OF KELLY ENGINEERING GROUP. ANY VIOLATIONS TO THIS DOCUMENT WITHOUT THE WRITTEN PERMISSION OF KELLY ENGINEERING GROUP SHALL BECAUSE IT IS UNLAWFUL.

SCALE	1" = 20'
DATE	09/26/22
SHEET	5 of 8
FILE #	GD04
JOB #	F:\P\2021-016
DRAWN BY	AJV
CHKD BY	BGL
APPD BY	BGL

4.	11/27/23	REVISED LAYOUT	
3.	04/17/23	CONSTRUCTION SET	
2.	02/07/23	PER TOWN COMMENTS	
1.	01/09/23	PER TOWN COMMENTS	
REV	DATE	REVISION	BY

HANOVER WASHINGTON L.P.	
"BETWEEN 1167 & 1207" WASHINGTON ST.	
HANOVER MA	
GRADING	
PLAN	

KE	KELLY ENGINEERING GROUP
civil engineering consultants	
0 Campanelli Drive, Braintree, MA 02184	
Phone: 781-843-4333 www.kellyengineeringgroup.com	

COMMONWEALTH OF MASSACHUSETTS

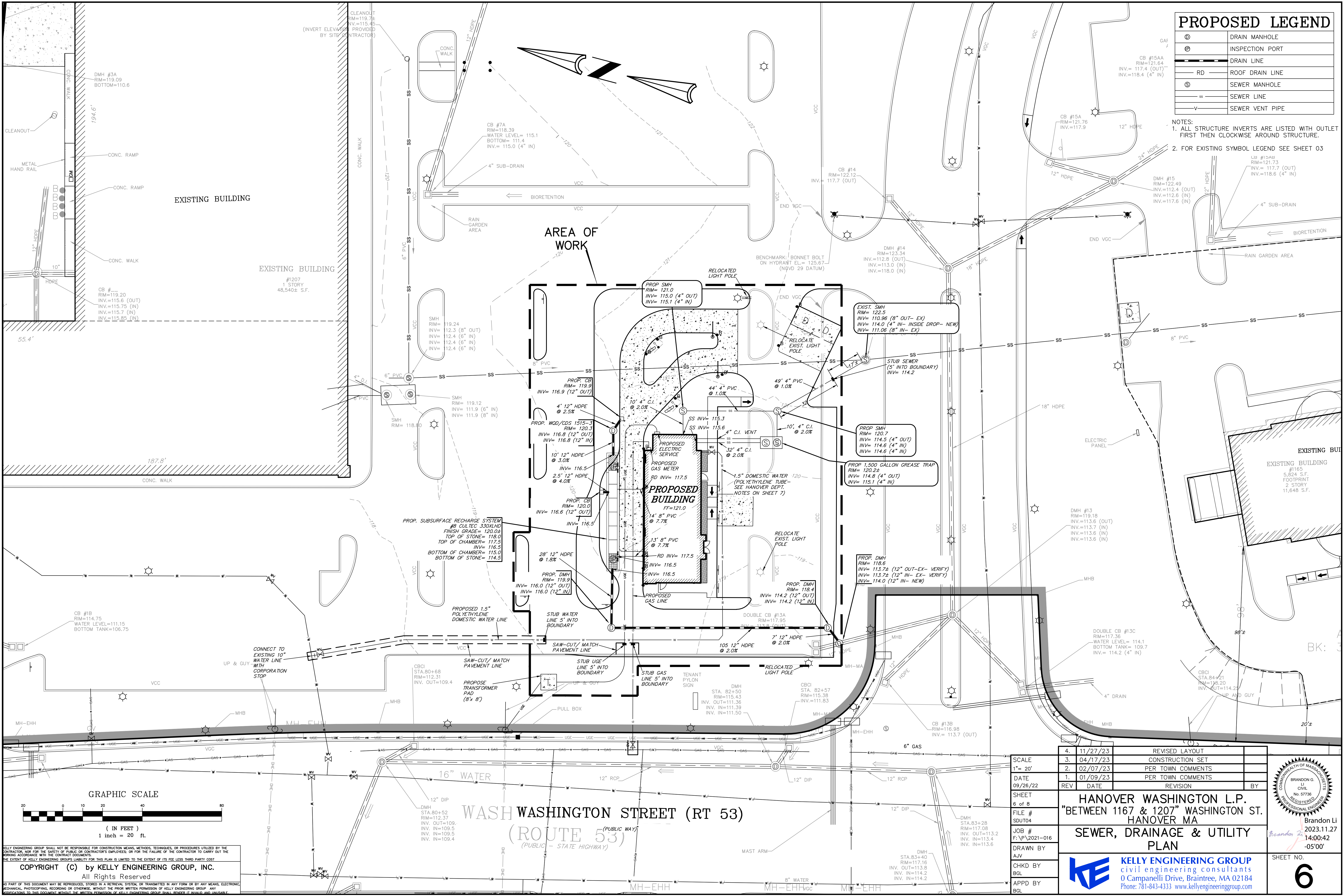
BRANDON G. J. CIVIL No. 57738 REGISTERED PROFESSIONAL ENGINEER

Brandon Li

2023.11.2 7:14:00:27 -05'00'

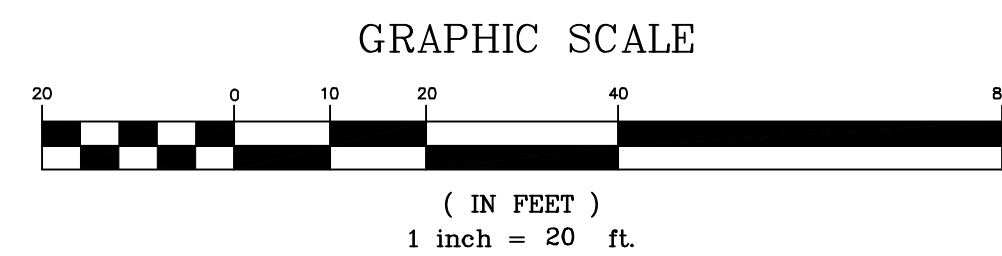
SHEET NO.

5



PROPOSED LEGEND	
⊙	DRAIN MANHOLE
⊕	INSPECTION PORT
—	DRAIN LINE
— RD —	ROOF DRAIN LINE
⊙	SEWER MANHOLE
— SS —	SEWER LINE
— V —	SEWER VENT PIPE

- NOTES:
1. ALL STRUCTURE INVERTS ARE LISTED WITH OUTLET FIRST THEN CLOCKWISE AROUND STRUCTURE.
 2. FOR EXISTING SYMBOL LEGEND SEE SHEET 03




KELLY ENGINEERING GROUP SHALL NOT BE RESPONSIBLE FOR CONSTRUCTION MEANS, METHODS, TECHNIQUES, OR PROCEDURES UTILIZED BY THE CONTRACTOR, NOR FOR THE SAFETY OF PUBLIC OR CONTRACTOR'S EMPLOYEES, OR FOR THE FAILURE OF THE CONTRACTOR TO CARRY OUT THE WORKING ACCORDANCE WITH THE CONTRACT DOCUMENTS.

THE EXTENT OF KELLY ENGINEERING GROUPS LIABILITY FOR THIS PLAN IS LIMITED TO THE EXTENT OF ITS FEE LESS THIRD PARTY COST

COPYRIGHT (C) by KELLY ENGINEERING GROUP, INC.
All Rights Reserved

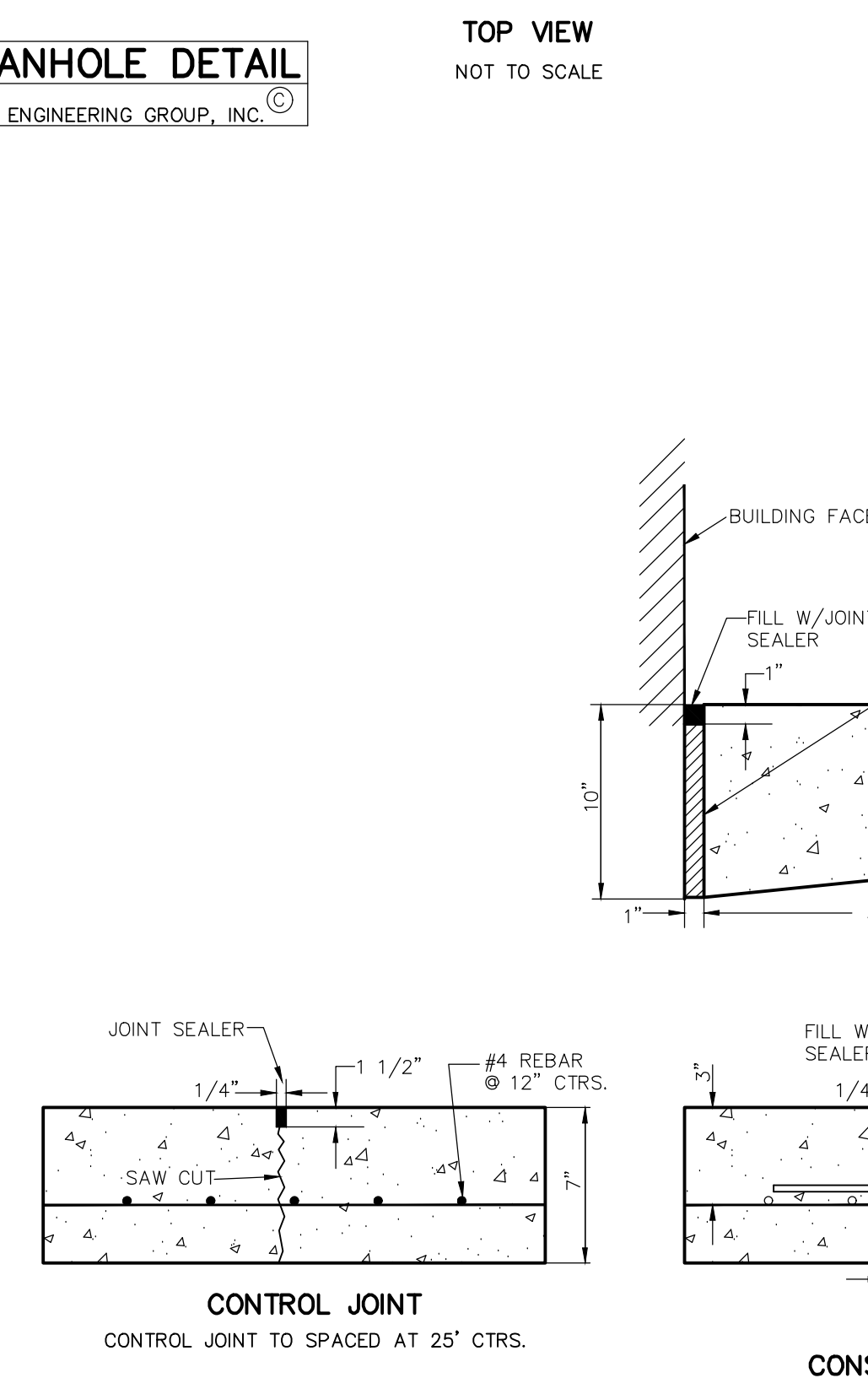
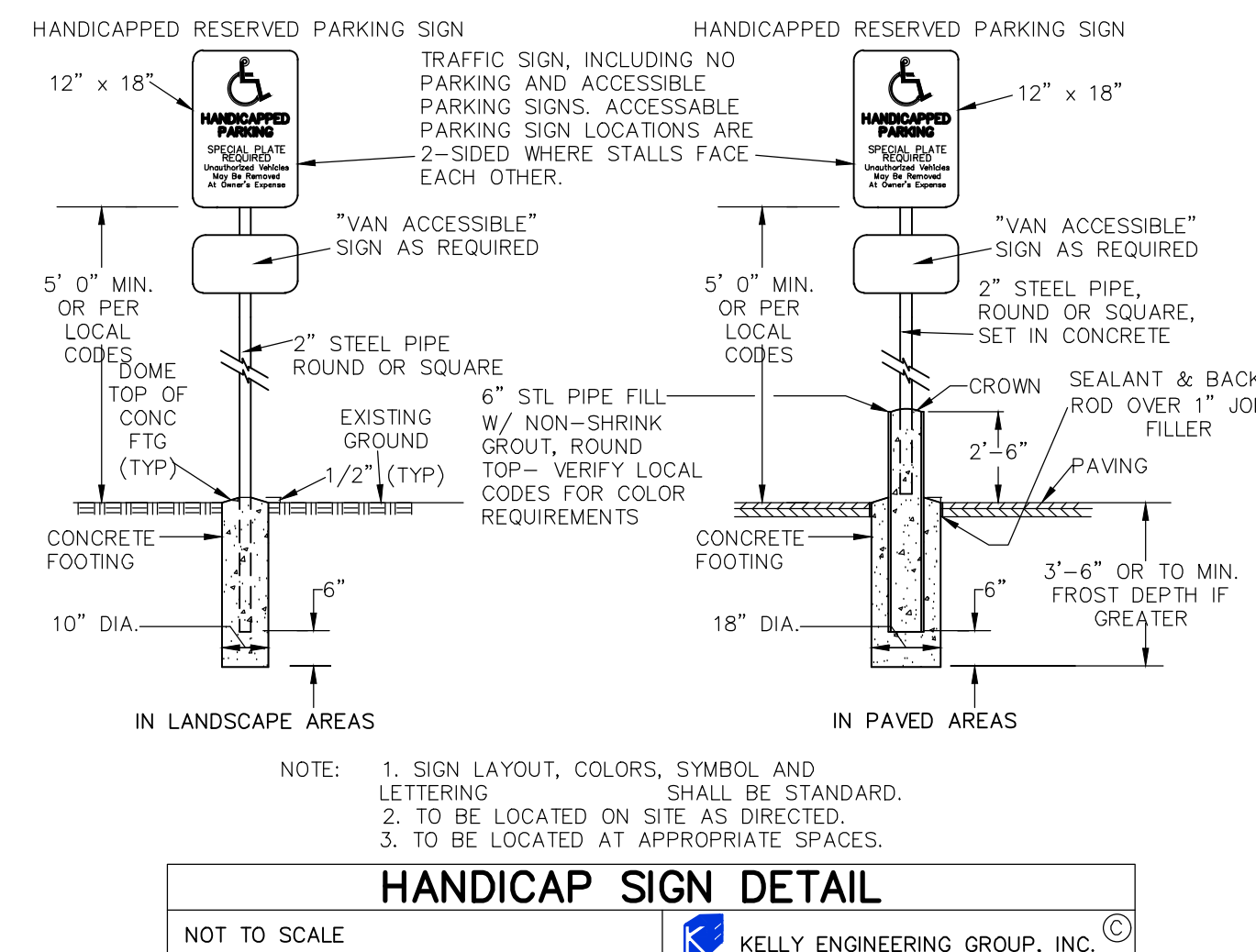
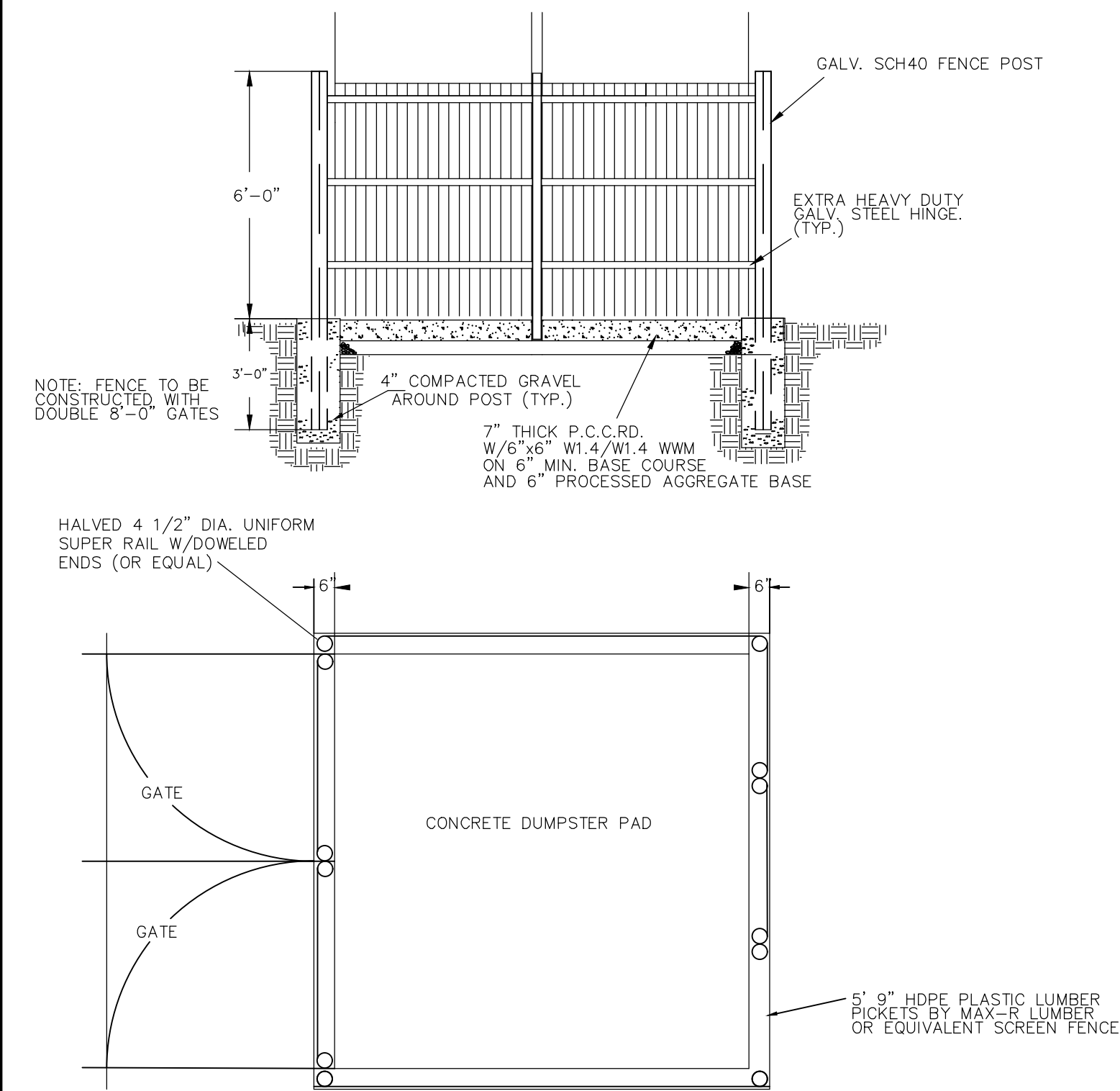
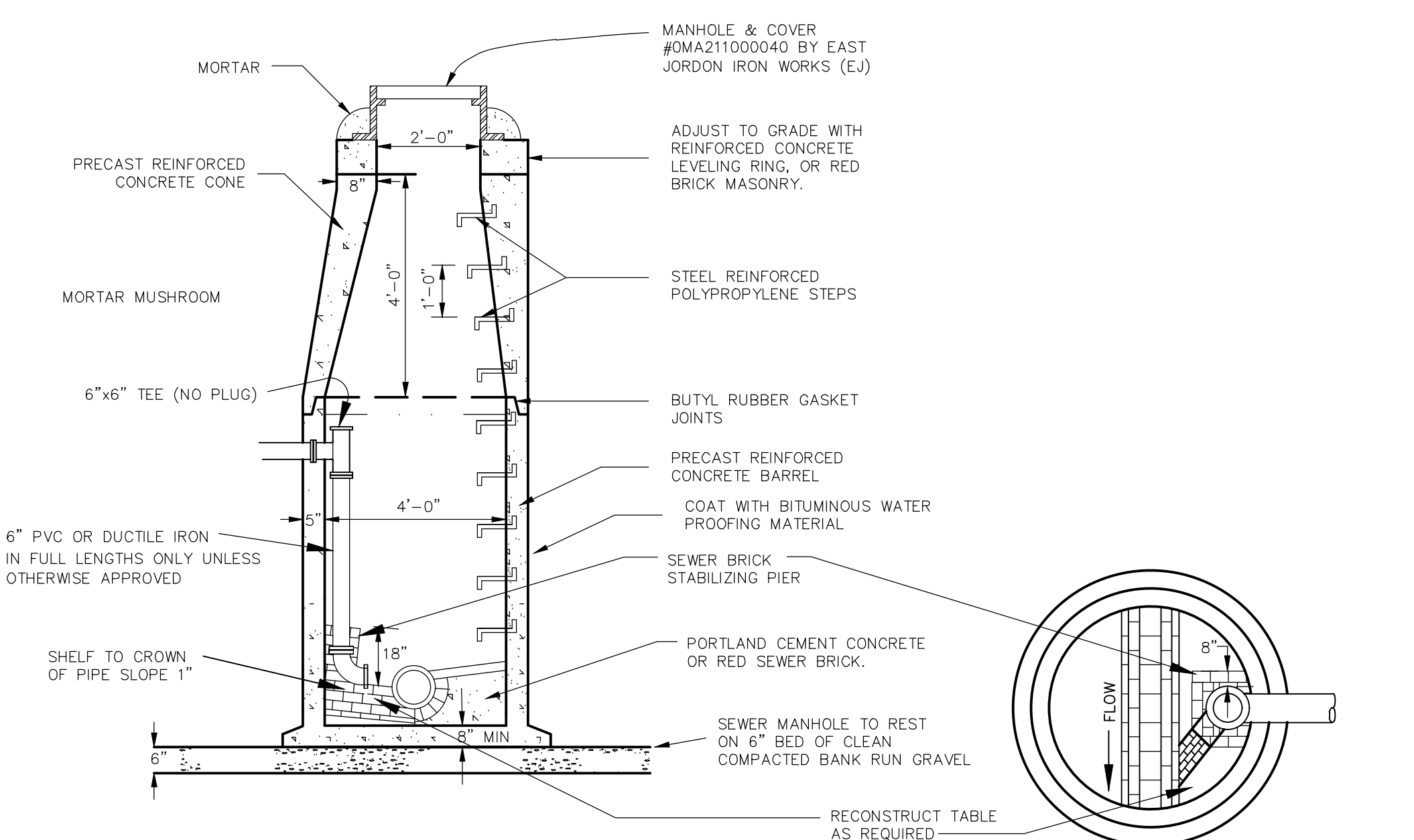
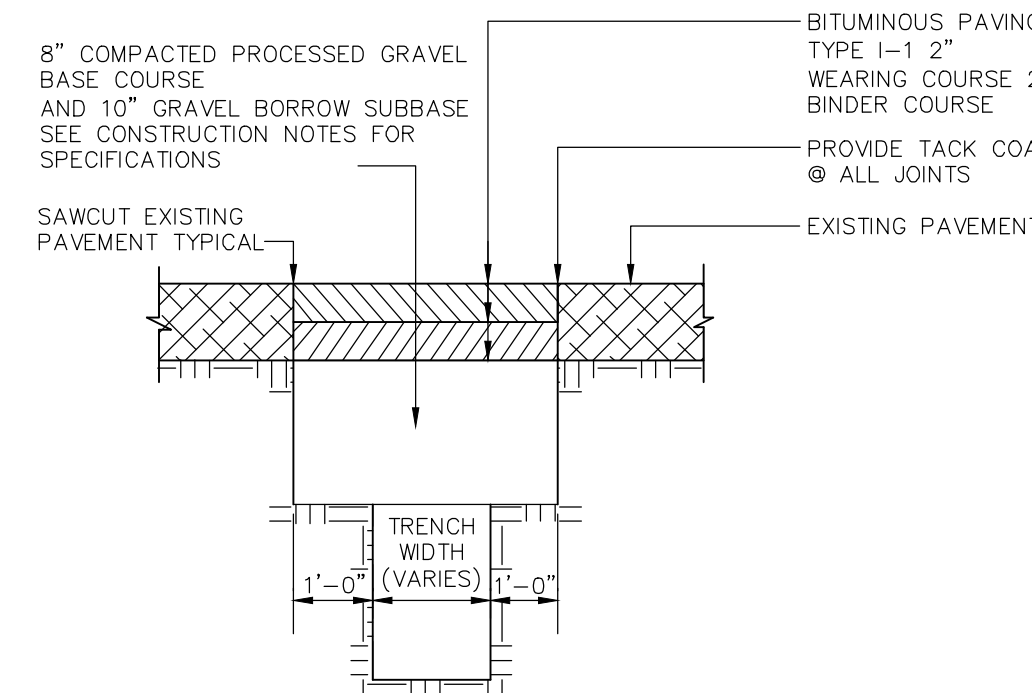
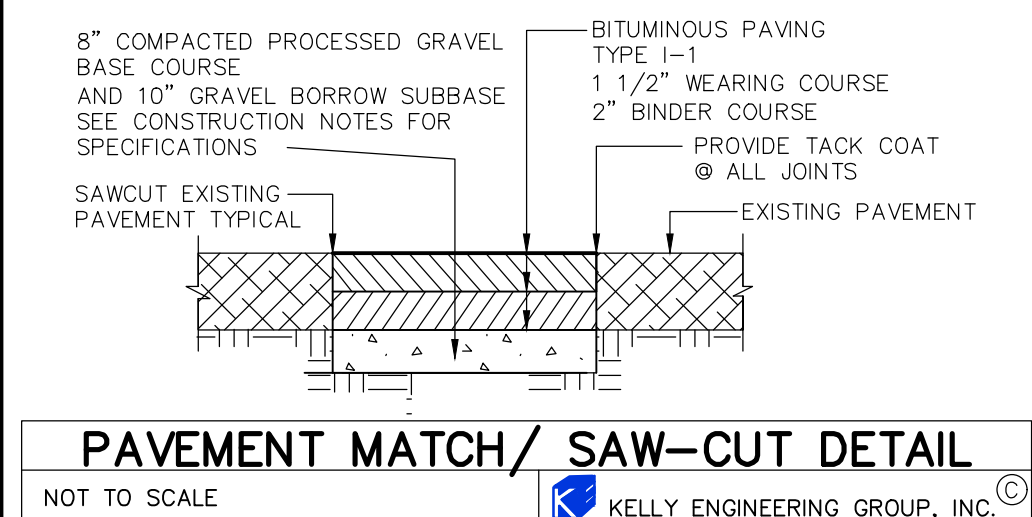
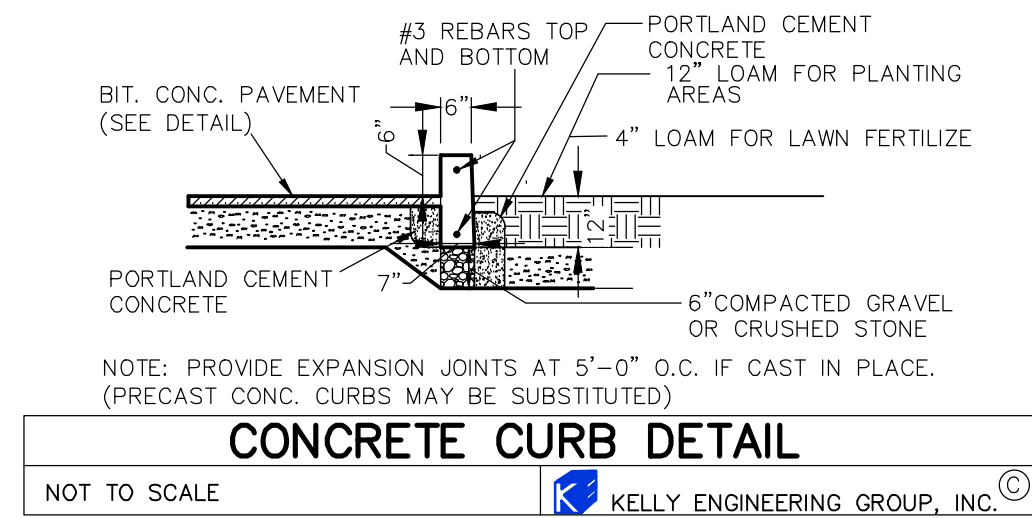
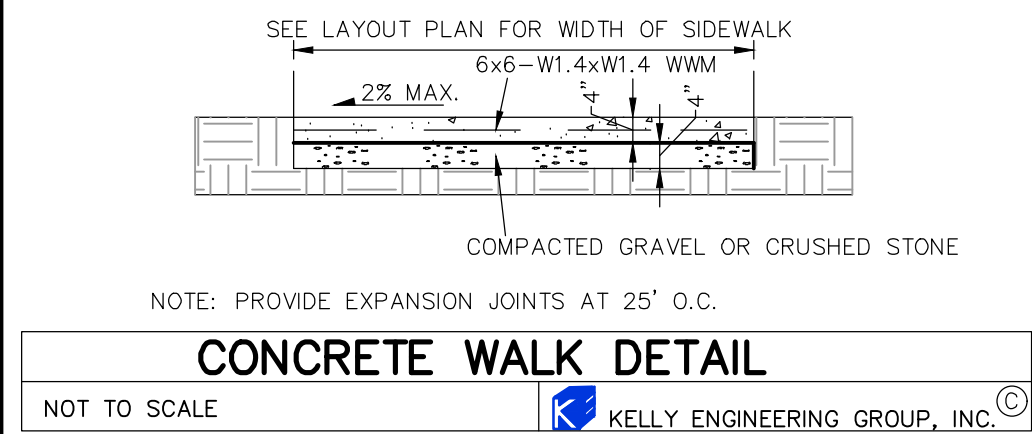
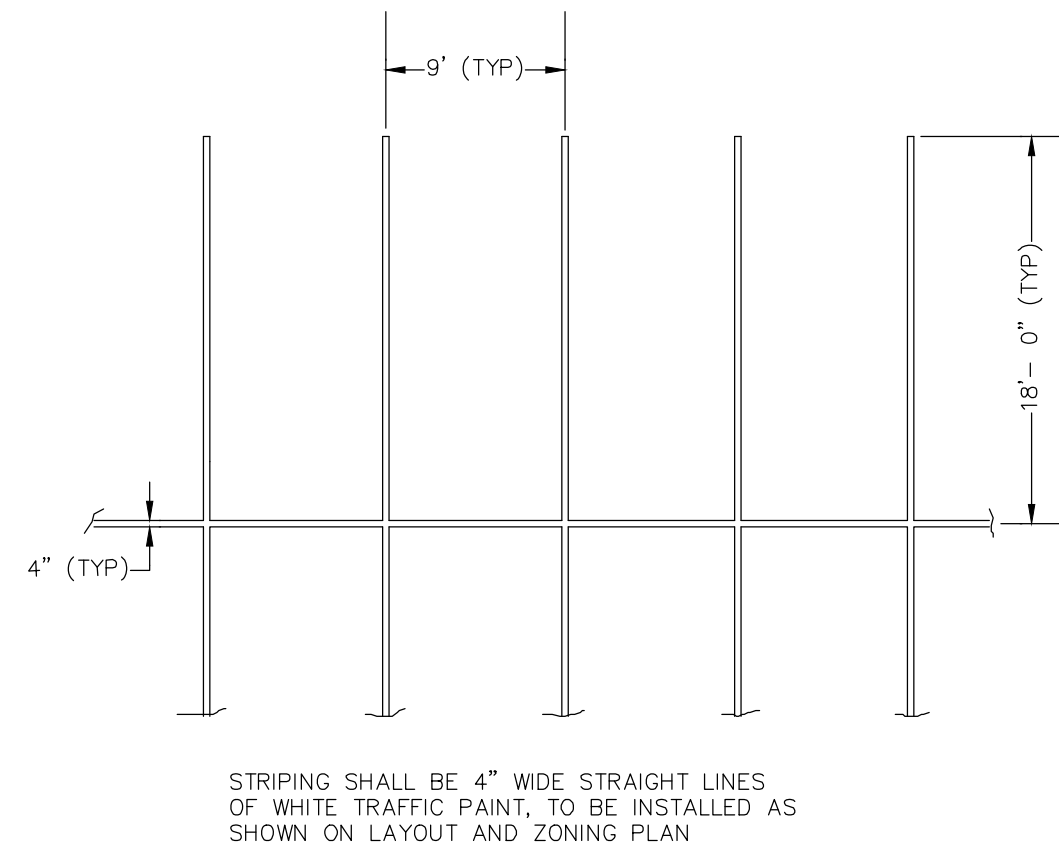
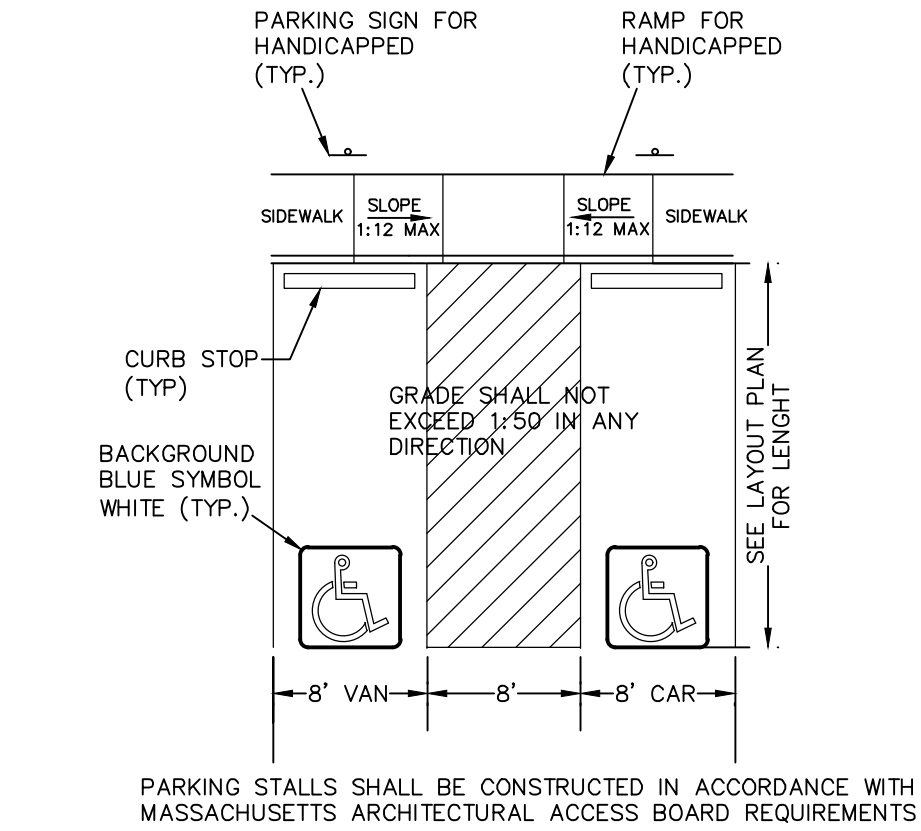
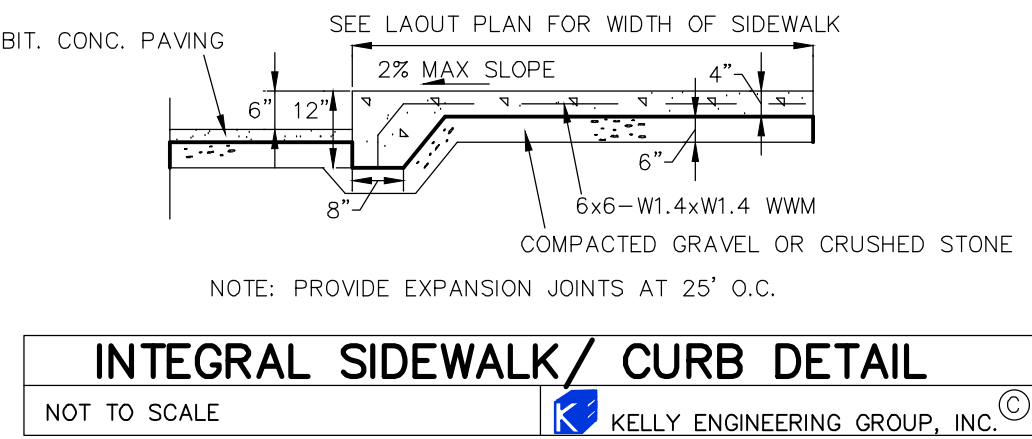
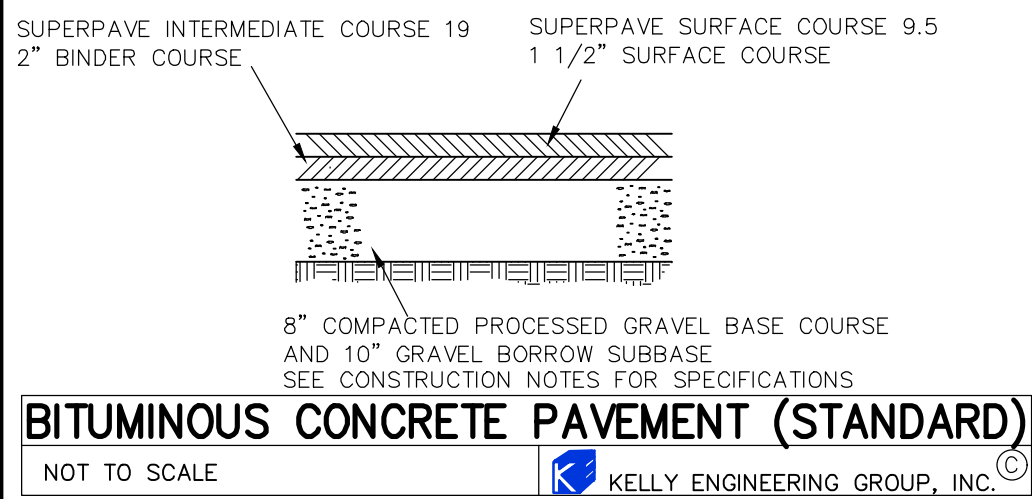
NO PART OF THIS DOCUMENT MAY BE REPRODUCED, STORED IN A RETRIEVAL SYSTEM, OR TRANSMITTED IN ANY FORM OR BY ANY MEANS, ELECTRONIC, MECHANICAL, PHOTOCOPYING, RECORDING OR OTHERWISE, WITHOUT THE PRIOR WRITTEN PERMISSION OF KELLY ENGINEERING GROUP. ANY VIOLATIONS TO THIS DOCUMENT WITHOUT THE WRITTEN PERMISSION OF KELLY ENGINEERING GROUP SHALL BECAUSE ILLEGAL AND UNLAWFUL.

	4.	11/27/23	REVISED LAYOUT	
SCALE 1"= 20'	3.	04/17/23	CONSTRUCTION SET	
	2.	02/07/23	PER TOWN COMMENTS	
DATE 09/26/22	1.	01/09/23	PER TOWN COMMENTS	
	REV	DATE	REVISION	BY
SHEET 6 of 8	HANOVER WASHINGTON L.P. "BETWEEN 1167 & 1207" WASHINGTON ST. HANOVER MA			
FILE # SDUT04	SEWER, DRAINAGE & UTILITY PLAN			
JOB # F:\P\2021-016				
DRAWN BY AJV				
CHKD BY BGL				
APPD BY BGL				
				
	KELLY ENGINEERING GROUP civil engineering consultants 0 Campanelli Drive, Braintree, MA 02184 Phone: 781-843-4333 www.kellyengineeringgroup.com			

Brandon Li
2023.11.27
14:00:42
-05'00'

SHEET NO.

6



CONSTRUCTION NOTES

- THE CONTRACTOR SHALL REPORT TO THE OWNER AND ENGINEER OF ANY SIGNIFICANT VARIATIONS IN EXISTING SITE CONDITIONS FROM THOSE SHOWN ON THESE PLANS. ANY PROPOSED REVISIONS TO THE WORK, IF REQUIRED BY THESE SITE CONDITIONS, SHALL NOT BE UNDERTAKEN UNTIL REVIEWED AND APPROVED BY THE OWNER AND THE ENGINEER.
- THE CONTRACTOR SHALL NOTIFY THE TOWN OF HANOVER DEPARTMENT OF PUBLIC WORKS AT LEAST 48 HOURS IN ADVANCE OF ANY REQUIRED INSPECTIONS.
- IN ORDER TO PROTECT THE PUBLIC SAFETY DURING CONSTRUCTION, THE CONTRACTOR IS RESPONSIBLE FOR INSTALLING AND MAINTAINING AT ALL TIMES ALL NECESSARY SAFETY DEVICES AND PERSONNEL, WARNING LIGHTS, BARRICADES, AND POLICE OFFICERS.
- ALL WORK SHALL CONFORM TO A SPECIAL PERMIT TO BE ISSUED BY THE TOWN OF HANOVER.
- FOR ANY PROJECT THAT INVOLVES 1 ACRE OR MORE OF DISTURBANCE, CONTRACTOR SHALL SECURE A NPDES PERMIT PRIOR TO BEGINNING ANY GRADING ACTIVITIES.
- THE LOCATION OF UNDERGROUND UTILITIES AS REPRESENTED ON THESE PLANS IS BASED UPON PLANS AND INFORMATION PROVIDED BY THE RESPECTIVE UTILITY COMPANIES OR MUNICIPAL DEPARTMENTS SUPPLEMENTED BY FIELD IDENTIFICATION WHEREVER POSSIBLE. NO WARRANTY IS MADE AS TO THE ACCURACY OF THESE LOCATIONS OR THAT ALL UNDERGROUND UTILITIES ARE SHOWN. THE CONTRACTOR SHALL CONTRACT DIG SAFE AT LEAST 72 HOURS PRIOR TO THE START OF CONSTRUCTION. DIG SAFE TELEPHONE NUMBER IS 1-888-344-7233.
- THE CONTRACTOR SHALL VERIFY THE LOCATION, SIZE AND DEPTH OF EXISTING UTILITIES PRIOR TO TAPPING INTO, CROSSING OR EXTENDING THEM. IF THE NEW WORK POSSES A CONFLICT WITH EXISTING UTILITIES, THE ENGINEER SHALL BE NOTIFIED PRIOR TO THE CONTRACTOR CONTINUING.
- REFER TO ARCHITECTURAL PLANS FOR EXACT BUILDING DIMENSION AND DOOR LOCATIONS.
- ALL PROPOSED SITE GAS, ELECTRIC, TELEPHONE, CATV FEATURES SHOWN ON SITE DEVELOPMENT PLANS ARE INTENDED AS A GUIDE ONLY. FINAL CONFIGURATION TO BE CONFIRMED WITH PROJECT MEP ENGINEER AND UTILITY PROVIDER.
- REFER TO PLUMBING PLANS FOR EXACT SIZE AND LOCATION OF SANITARY AND WATER CONNECTIONS.
- REFER TO ELECTRICAL PLANS FOR THE LIGHTING CIRCUITS, FIXTURE DETAIL AND BUILDING CONNECTION LOCATION.
- ALL H.D.P.E. HIGH DENSITY POLYETHYLENE PIPE SHALL BE ADS N-12 OR APPROVED EQUAL. SEWER SHALL BE SDR 35 WITH RUBBER RING JOINTS. SEE HANOVER WATER DEPARTMENT NOTES FOR WATER LINES.
- NO LEDGE, BOULDERS, OR OTHER UNYIELDING MATERIALS ARE TO BE LEFT WITHIN 6" OF THE SEWER IN THE TRENCH, NOR ARE THEY TO BE USED FOR BACKFILL FOR THE FIRST 12" ABOVE THE PIPES.
- WALKS SHALL BE 4" THICK AND SHALL BE CONSTRUCTED ON 6" OF COMPACTED BANK GRAVEL. CONCRETE FOR WALKS SHALL HAVE A MINIMUM 28 DAY COMPRESSION STRENGTH OF 4,000 PSI. WALKS SHALL BE REINFORCED WITH WMM 6x 6 W1.4/W1.4 CONFORMING TO ASTM A184.
- GRAVEL BORROW SUBBASE SHALL CONFORM TO M.D.P.W. M1.03.0 TYPE "B" AND PROCESSED GRAVEL BASE MATERIAL SHALL BE CLEAN BANK RUN GRAVEL, CONFORMING TO M.D.P.W. M1.03.1, WITH NO STONES LARGER THAN THREE (3) INCHES IN DIAMETER AND ROLLED WITH AT LEAST A TEN TON ROLLER. THE SURFACES SHALL BE WET DURING ROLLING TO BIND THE MATERIAL. ALL STONES OF 4" DIAMETER OR LARGER SHALL BE REMOVED FROM THE SUB-BASE PRIOR TO PLACING BASE MATERIAL. PULVERIZED MATERIAL MAY BE USED AS BASE MATERIAL PROVIDING IT MEETS THIS SPECIFICATIONS. AREAS TO BE REPAVED SHALL BE PULVERIZED AND REGRADED TO PROVIDE POSITIVE FLOW TO DRAINAGE AND AWAY FROM BUILDING. PAVE WITH 1 1/2" WEARING COURSE ON 1 1/2" BINDER COURSE. ALL VALVES, BOXES, MANHOLES AND OTHER UTILITIES APPURTENANCES SHALL BE ADJUSTED TO CONFORM TO FINAL GRADE.
- TRANSFORMER PAD SHALL BE INSTALLED PER PROVIDERS SPECIFICATIONS.
- PAVEMENT AREA SHALL BE PAVED TO A THICKNESS AS SHOWN ON THE PLANS MEASURED AFTER COMPACTION, WITH A SUPERPAVE INTERMEDIATE COURSE AND SUPERPAVE SURFACE COURSE.
- THE AGGREGATE SHALL BE COMPOSED, MIXED AND LAID HOT IN TWO COURSES AS SPECIFIED IN THE "COMMONWEALTH OF MASSACHUSETTS STANDARD SPECIFICATIONS FOR HIGHWAYS AND BRIDGE", 2021 EDITION. SECTION 460 HOT MIX ASPHALT PAVEMENT FOR LOCAL STREETS.

- DUMPSTER PAD SHALL BE 78" THICK REINFORCED CONCRETE SLAB WITH CONTROL JOINTS EVERY 10'. THE PAD SHALL BE CONSTRUCTED OVER 6" OF BASE COURSE AND 6" OF PROCESSED AGGREGATE BASE, COMPACT TO 95% REINFORCEMENT SHALL BE WMM 6x6-W1.4 x W1.4 PLACED AT THE CENTER OF THE SLAB. THE FRONT END OF COMPACTOR PAD SHALL HAVE EMBEDDED A 6" x 6" x 3/8" STEEL ANGLE.
- ALL EXISTING PAVING TO BE DISTURBED SHALL BE CUT ALONG A STRAIGHT LINE THROUGH ITS ENTIRE THICKNESS, BUT NEW PAVING INTO THE EXISTING PAVEMENT TO REMAIN AND TACK COAT THE JOINT.
- ANY PAVEMENT REMOVED FOR UTILITY TRENCH EXCAVATION OR OTHERWISE DAMAGED DURING CONSTRUCTION SHALL BE REPLACED WITH A PAVEMENT SECTION CONSISTING OF 1 1/2" SUPERPAVE SURFACE COURSE OVERLAYING A 1 1/2" SUPERPAVE INTERMEDIATE COURSE OVERLAYING A 12" COMPACTED GRAVEL BASE COURSE.
- ALL AREAS TO BE PLANTED WITH GRASS SHALL BE TREATED WITH 100 POUNDS OF GROUND LIME PER 1,000 S.F. OF AREA PLANTED. ALL AREAS TO BE PLANTED WITH GRASS SHALL BE FERTILIZED WITH 10-10-10 AT THE RATE OF 1,000 POUNDS PER ACRE OR AS REQUIRED BY SOIL TEST. 40% OF THE NITROGEN SHALL BE ORGANIC FORM.
- ALL LANDSCAPED AREAS TO BE LOAMED AND SEEDED SHALL HAVE THE FOLLOWING MIX:
PERENNIAL RYE 25%
KENTUCKY BLUE 25%
CREEPING RED FESCUE OR PENNLAWN FESCUE 50%
SEED AT THE RATE OF 5#/1,000 S.F.
- ALL DISTURBED AREAS TO BE LOAMED AND SEEDED SHALL HAVE A MINIMUM OF 4 INCHES OF TOPSOIL SPREAD EVENLY THROUGHOUT. PROVIDE EROSION CONTROL MEASURES AS NECESSARY TO PROVIDE SLOPE STABILITY UNTIL VEGETATION IS ESTABLISHED. (NOTE: IF THERE IS A CONFLICT BETWEEN THESE PLANS AND LANDSCAPE PLANS THE LANDSCAPE PLANS SHALL DICTATE.)
- THE CONTRACTOR SHALL REGULARLY INSPECT THE PERIMETER OF THE PROPERTY TO CLEANUP AND REMOVE LOOSE CONSTRUCTION DEBRIS BEFORE IT LEAVES THE SITE. ALL DEMOLITION DEBRIS SHALL BE PROMPTLY REMOVED FROM THE SITE TO A LEGAL DUMP SITE. ALL TRUCKS LEAVING THE SITE SHALL BE COVERED.
- IT SHALL BE THE RESPONSIBILITY OF THE CONTRACTOR TO INSTITUTE EROSION CONTROL MEASURES ON AN AS NECESSARY BASIS, SUCH THAT EXCESSIVE SOIL EROSION DOES NOT OCCUR. MEASURES SHOULD INCLUDE SILT SACKS IN DRAINAGE INLETS, MULCHING AND PLANTING OF DISTURBED AREAS.
- PRIOR TO THE COMMENCEMENT OF ANY OTHER WORK A SILT SACK SHALL BE INSTALLED IN EACH EXISTING DRAINAGE INLET.
- AFTER INSTALLATION OF EACH DRAINAGE INLET A SILT SACK SHALL BE INSTALLED IN EACH INLET TO PREVENT SEDIMENT FROM ENTERING THE STORM DRAIN SYSTEM.
- AT THE END OF CONSTRUCTION ALL DRAINAGE STRUCTURES ARE TO BE CLEANED OF SILT, STONES AND OTHER DEBRIS.
- DURING CONSTRUCTION THE EROSION CONTROL MEASURES SHALL BE INSPECTED ONCE PER WEEK AND WITHIN 24 HOURS OF ANY STORM EVENT GENERATING MORE THAN 1/2" OF RAINFALL. THE EROSION CONTROL MEASURES SHALL BE CLEANED REGULARLY AND ADJUSTED IF NECESSARY TO ENSURE THAT NO SILT OR DEBRIS LEAVES THE SITE.
- STABILIZATION MEASURES (SEEDING OR PLANTING, APPLYING MULCH OR OTHER NON-VEGETATIVE PRODUCT) OF EXPOSED SOILS SHALL BEGIN AS SOON AS PRACTICABLE AND IMMEDIATELY AFTER EARTH-DISTURBING ACTIVITIES HAVE PERMANENTLY OR TEMPORARILY CEASED. STABILIZATION TO BE COMPLETED WITHIN 14 DAYS.
- SILT SOCKS SHALL BE INSTALLED ON THE DOWNSTREAM SIDE OF ALL STOCK PILES.
- SPARE EROSION/SEDIMENT CONTROL MATERIALS SHALL BE AVAILABLE ON SITE FOR USE IN CONTINGENCY CONDITIONS.

HANOVER WATER DEPARTMENT NOTES

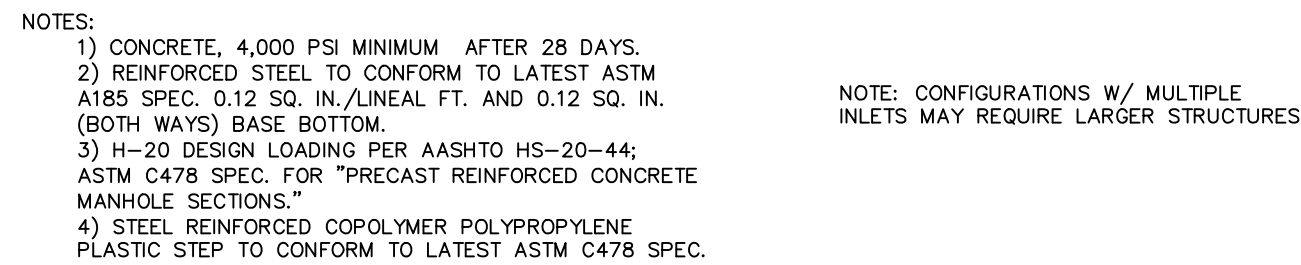
- AT ALL WATER MAIN AND SEWER CROSSING, ONE FULL LENGTH OF WATER PIPE SHALL BE LOCATED SO BOTH JOINTS WILL BE AS FAR FROM THE SEWER AS POSSIBLE.
- SEWER MATERIALS SHALL BE WATER WORKS GRADE 150 PSI PRESSURE RATED PIPE MEETING LATEST AWWA STANDARD C 151, "DUCTILE IRON PIPE, CENTRIFUGALLY CAST, FOR WATER OR OTHER LIQUIDS." PIPE SHALL HAVE A PRESSURE CLASS OF 350.
- ALL PIPE 3 INCH THROUGH 64 INCH SHALL CONFORM IN DESIGN AND MANUFACTURE TO THE LATEST ISSUE OF AWWA STANDARD C 151, "DUCTILE IRON PIPE, CENTRIFUGALLY CAST, FOR WATER OR OTHER LIQUIDS." PIPE SHALL HAVE A PRESSURE CLASS OF 350.
- ALL FITTINGS SHALL BE DUCTILE IRON AND CONFORM IN DESIGN AND MANUFACTURE TO THE LATEST ISSUE OF AWWA STANDARD C 110, "DUCTILE IRON AND GRAY-IRON FITTINGS," 3-INCH THROUGH 48-INCH FOR WATER AND OTHER LIQUIDS.
- ALL PIPE AND FITTINGS SHALL HAVE A CEMENT-MORTAR LINING INSIDE AND A BITUMINOUS SEAL COAT APPLIED BOTH INSIDE AND OUTSIDE TO CONFORM WITH LATEST ISSUE OF AWWA C104, CEMENT-MORTAR LINING FOR DUCTILE-IRON PIPE AND FITTINGS FOR WATER.
- PUSH-ON AND MECHANICAL JOINTS ARE PERMITTED AND SHALL CONFORM IN DESIGN AND MANUFACTURE TO THE LATEST ISSUE OF AWWA STANDARD C 111, "RUBBER-GASKET JOINTS FOR DUCTILE-IRON PRESSURE PIPE AND FITTINGS."
- ALL VALVES SHALL CONFORM IN DESIGN AND MANUFACTURE TO THE LATEST ISSUE OF AWWA STANDARD C509, "RESILIENT-SEATED GATE VALVES FOR WATER SUPPLY SERVICE." ALL VALVES SHALL HAVE A TWO-INCH OPERATING NUT AND OPEN IN A COUNTER-CLOCKWISE DIRECTION. THE TOWN RECOMMENDS USING MUELLER VALVES (A2362 FULL-BODY).
- ALL HYDRANTS SHALL CONFORM IN DESIGN AND MANUFACTURE TO THE LATEST ISSUE OF AWWA STANDARD C202, "DRY BARREL FIRE HYDRANTS" AND MEET ANY REQUIREMENTS OF THE HANOVER FIRE DEPARTMENT. ALL HYDRANTS SHALL HAVE A MAIN VALVE OPENING OF 5.25 INCHES AND SHALL OPEN IN A COUNTERCLOCKWISE DIRECTION. THE TOWN RECOMMENDS USING MUELLER HYDRANTS (A423/5.25").
- WATER METERS (CONSUMPTION) SHALL BE PROVIDED BY THE CONTRACTOR AND SHALL MEET THE SPECIFICATIONS OF THE TOWN OF HANOVER.
- DOMESTIC WATER LINE SHALL BE POLYETHYLENE (PE) TUBE, COPPER TUBE SIZE (CTS), 200 PSI TEST CONFORMING TO THE LATEST EDITION OF AWWA STANDARD C900 AND SHALL BE A CONTINUOUS RUN WITH NO JOINTS.
- PROVIDE BACKFLOW DEVICE FOR DOMESTIC WATER LINE AND SUBMIT TO WATER DEPT. PRIOR TO INSTALLATION.
- ALL IRRIGATION SPRINKLERS TO BE CONNECTED TO IRRIGATION WELL.

SCALE	4. 11/27/23	REVISED LAYOUT	
NA	3. 04/17/23	CONSTRUCTION SET	
DATE	2. 02/07/23	NO CHANGE	
09/26/22	1. 01/09/23	PER TOWN COMMENTS	
SHEET	REV	DATE	BY
7 of 8			
FILE #			
D04			
JOB #			
F:\P\2021-016			
DRAWN BY			
AJV			
CHKD BY			
BGL			
APPD BY			
BGL			

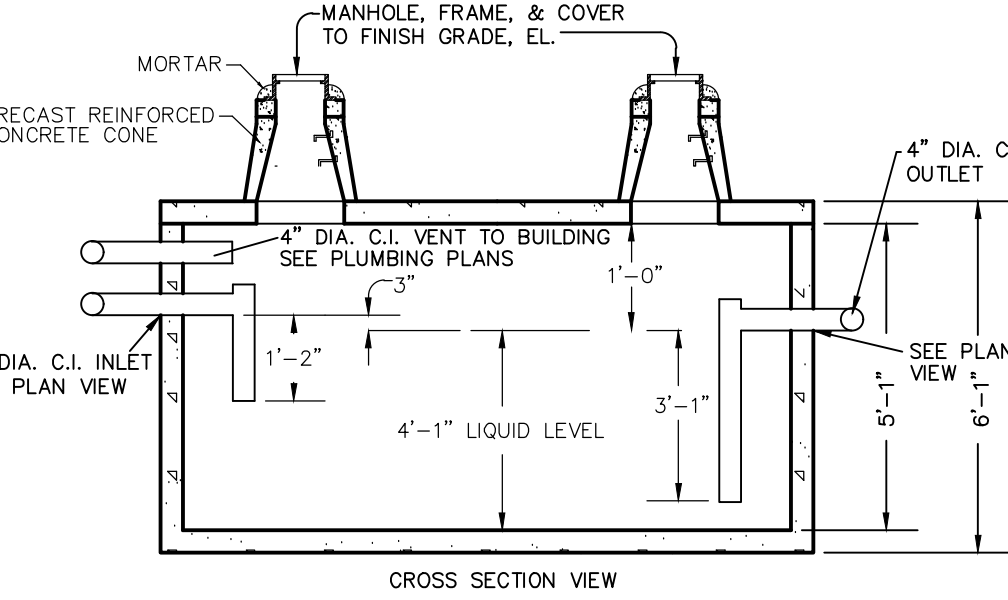
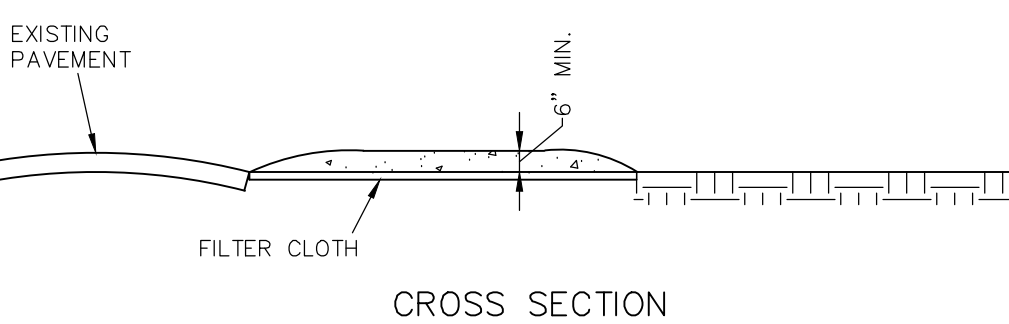
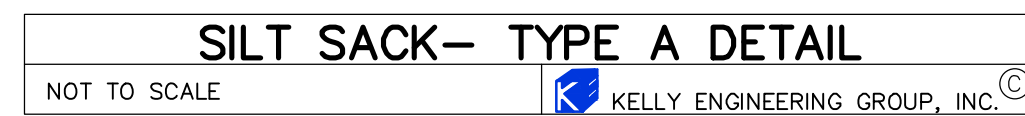
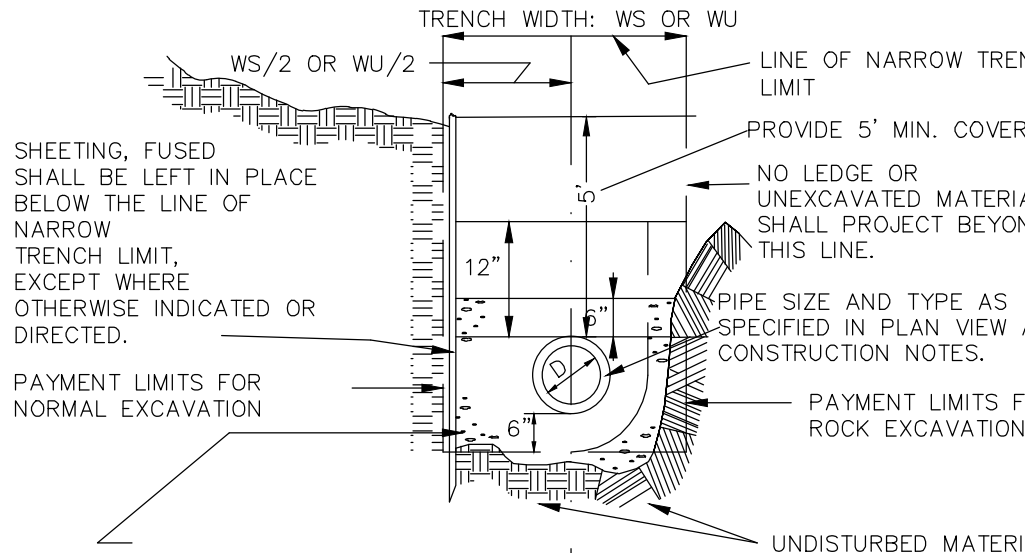
HANOVER WASHINGTON L.P.
"BETWEEN 1167 & 1207" WASHINGTON ST.
HANOVER MA
DETAIL SHEET

COMMONWEALTH OF MASSACHUSETTS
BRANDON G. LI
CIVIL
No. 57736
REGISTERED PROFESSIONAL ENGINEER
Brandon Li
2023.11.27
14:01:00
-05'00'
SHEET NO. 7

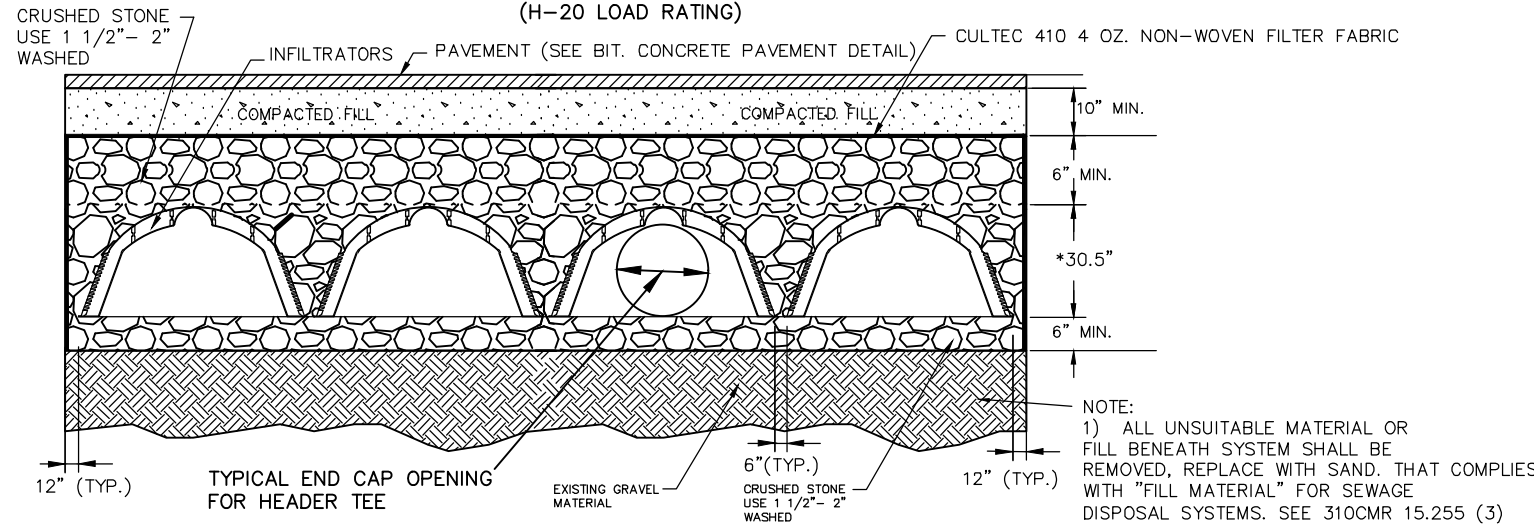
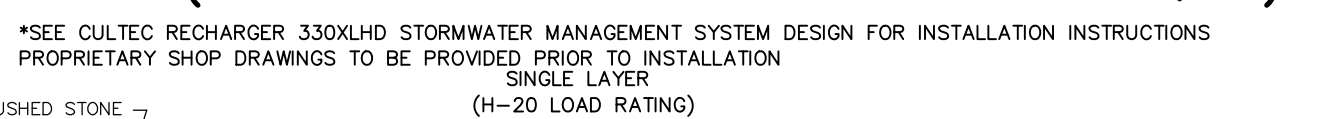
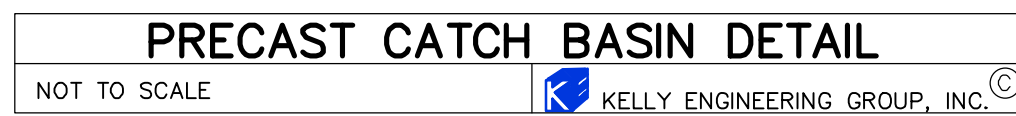
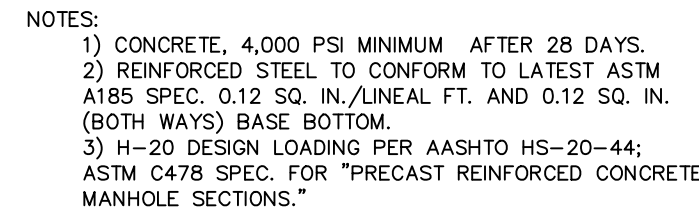
KELLY ENGINEERING GROUP SHALL NOT BE RESPONSIBLE FOR CONSTRUCTION MEANS, METHODS, TECHNIQUES, OR PROCEDURES UTILIZED BY THE CONTRACTOR, NOR FOR THE SAFETY OF PUBLIC OR CONTRACTOR'S EMPLOYEES, OR FOR THE FAILURE OF THE CONTRACTOR TO CARRY OUT THE WORKING ACCORDANCE WITH THE CONTRACT DOCUMENTS.
THE EXTENT OF KELLY ENGINEERING GROUP'S LIABILITY FOR THIS PLAN IS LIMITED TO THE EXTENT OF ITS FEE LESS THIRD PARTY COST
COPYRIGHT (C) BY KELLY ENGINEERING GROUP, INC.
All Rights Reserved
NO PART OF THIS DOCUMENT MAY BE REPRODUCED, STORED IN A RETRIEVAL SYSTEM, OR TRANSMITTED IN ANY FORM OR BY ANY MEANS, ELECTRONIC, MECHANICAL, PHOTOCOPYING, RECORDING OR OTHERWISE, WITHOUT THE PRIOR WRITTEN PERMISSION OF KELLY ENGINEERING GROUP. ANY VIOLATIONS TO THIS DOCUMENT, WITHOUT THE WRITTEN PERMISSION OF KELLY ENGINEERING GROUP, SHALL BE SUBJECT TO LITIGATION AND LAWSUIT.



NOTE: FOR FITTINGS W/LESS THAN 45°
DEFLECTION USE BEARING AREA FOR 45° BEND
BASED ON INTERNAL PRESSURE OF 80 PSI



- NOTE: VENT SHALL BE EXPED TO THE INSIDE OF THE BUILDING IN COMPLIANCE WITH 24B CMR 10.16(5)(c). VENT SHALL BE ABOVE WATER LEVEL AND INVERTS OF THE INLET TEE SHALL EXTEND TO THE MID DEPTH OF THE TANK. THE OUTLET TEE SHALL EXTEND TO WITHIN 12 INCHES OF THE BOTTOM OF THE TANK. TEE'S SHALL BE DOUBLE FLANGE AND FULLY SUPPORTED BY A HANGER, BRACKET, TRAP OR OTHER DEVICE. (310 CMR 15.230(5)).
3. SHALL BE INSTALLED ON A LEVEL STABLE BASE AND BE MECHANICALLY SECURED TO THE BASE. THE BASE SHALL BE CRUSHED STONE OR BEEN LAID TO MINIMIZE UNEVEN SETTLING.
4. THE INLET AND OUTLET SHALL BE LOCATED AT THE CENTER LINE OF THE TANK, AND THE INLET SHALL BE ABOVE THE HIGH GROUNDWATER ELEVATION.



STORMWATER MANAGEMENT SYSTEM CONSTRUCTION OPERATION + MAINTENANCE NOTES:

1. EXTREME CARE SHALL BE TAKEN DURING CONSTRUCTION TO AVOID SILTATION DURING THE CONSTRUCTION PROCESS. SILT CAGES AND HAYBALE DIKES SHALL BE INSPECTED DAILY AND REPLACED IF NECESSARY
2. EXTREME CARE SHALL BE TAKEN TO PREVENT COMPACTION OF UNDISTURBED SOILS BENEATH RECHARGE SYSTEM.
3. THERE SHALL BE NO DISCHARGE OF WATER FOR CONSTRUCTION DEWATERING ACTIVITIES INTO THE STORMWATER MANAGEMENT SYSTEM.
4. THERE SHALL BE NO DISCHARGE OF STORMWATER INTO THE RECHARGE SYSTEM UNTIL THE SITE HAS BEEN STABILIZED.

CONSTRUCTION INSPECTION AND MAINTENANCE SCHEDULE:

CONSTRUCTION INSPECTION SCHEDULE

1. WEEKLY INSPECTIONS SHALL BE PERFORMED BY THE APPLICANTS ENGINEER AND A REPRESENTATIVE FROM THE TOWN'S ENGINEERING DEPARTMENT.
2. INSPECTIONS SHALL INCLUDE THE PAVEMENT TO DETERMINE IF ACCUMULATED SEDIMENT IS TO BE REMOVED, OF THE CATCH BASINS TO DETERMINE DEPTH OF SEDIMENTS AND REQUIRED CLEANING, INSPECTION OF THE STORMCOURSE TO DETERMINE IF CLEANING IS NECESSARY AND INSPECTION OF THE LEACHING SYSTEM SHALL BE CONDUCTED BY THE ENGINEER AND THE TOWN'S ENGINEERING DEPARTMENT.
3. AN INSPECTION OF THE EXCAVATION OF THE LEACHING SYSTEM SHALL BE CONDUCTED BY THE ENGINEER AND A REPRESENTATIVE THE TOWN'S ENGINEERING DEPARTMENT PRIOR TO PLACEMENT OF ANY MATERIAL OR CHAMBERS.

CONSTRUCTION MAINTENANCE SCHEDULE

1. WHEN THE BINDER COURSE HAS BEEN INSTALLED THE PAVEMENT SHALL BE KEPT CLEAR OF ACCUMULATED SEDIMENTS. IF ACCUMULATED SEDIMENTS ARE DEPOSITED ON THE PAVEMENT THE SEDIMENT SHALL BE CLEANED IMMEDIATELY. THE PAVEMENT SHALL BE SWEEP AS NECESSARY BASED ON THE WEEKLY INSPECTIONS. THE CONTRACTOR SHALL INSPECT THE PAVEMENT ON A DAILY BASIS AND REMOVE ACCUMULATED SEDIMENTS AS NECESSARY.
2. "SILT SAKS" SHALL BE INSTALLED AT ALL CATCH BASIN AND DROP INLET LOCATIONS. THE CONTRACTOR SHALL INSPECT THE "SILT SAKS" ON A WEEKLY BASIS AND AFTER HEAVY RAINSTORMS AND EMPTIED BASED ON MANUFACTURERS RECOMMENDATIONS.
3. THE CATCH BASINS SHALL BE INSPECTED ON A WEEKLY BASIS AND AFTER HEAVY RAINSTORMS. THE CATCH BASINS SHALL BE CLEANED WHEN 6" OF SEDIMENT HAS ACCUMULATED IN THE SUMP.
4. THE STORMCEPTOR SHALL BE INSPECTED ON A WEEKLY BASIS AND AFTER HEAVY RAINSTORMS. THE STORMCEPTOR SHALL BE CLEANED ON THE MANUFACTURERS RECOMMENDATION.
5. THE INFILTRATION GALLEYS SHALL BE INSPECTED ON A WEEKLY BASIS AND AFTER HEAVY RAINSTORMS AND SHALL BE CLEANED WHEN 2" OF SEDIMENT HAS ACCUMULATED IN THE INLET CHAMBER.



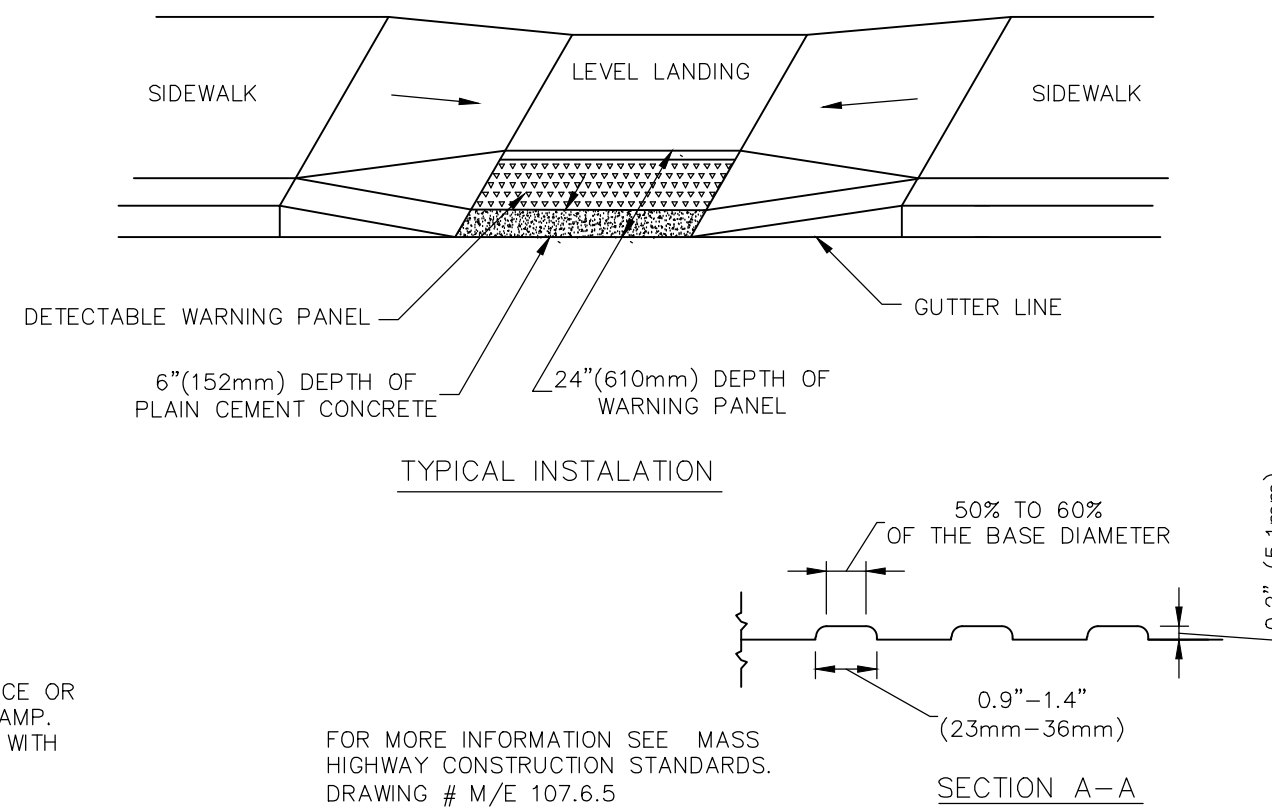
KELLY ENGINEERING GROUP SHALL NOT BE RESPONSIBLE FOR CONSTRUCTION MEANS, METHODS, TECHNIQUES, OR PROCEDURES UTILIZED BY THE CONTRACTOR, NOR FOR THE SAFETY OF PUBLIC OR CONTRACTOR'S EMPLOYEES; OR FOR THE FAILURE OF THE CONTRACTOR TO CARRY OUT THE WORKING ACCORDANCE WITH THE CONTRACT DOCUMENTS.


THE EXTENT OF KELLY ENGINEERING GROUPS LIABILITY FOR THIS PLAN IS LIMITED TO THE EXTENT OF ITS FEE LESS THIRD PARTY COST

COPYRIGHT (C) by KELLY ENGINEERING GROUP, INC.
All Rights Reserved

NO PART OF THIS DOCUMENT MAY BE REPRODUCED, STORED IN A RETRIEVAL SYSTEM, OR TRANSMITTED IN ANY FORM OR BY ANY MEANS, ELECTRONIC, MECHANICAL, PHOTOCOPYING, RECORDING OR OTHERWISE, WITHOUT THE PRIOR WRITTEN PERMISSION OF KELLY ENGINEERING GROUP ANY

DETECTABLE WARNING PANEL FOR WHEELCHAIR RAMPS



SCALE	4.	11/27/23	REVISED LAYOUT	
NA	3.	04/17/23	CONSTRUCTION SET	
	2.	02/07/23	NO CHANGE	
DATE	1.	01/09/23	NO CHANGE	
09/26/22	REV	DATE	REVISION	BY
<p>SHEET</p> <p>8 of 8</p> <p>FILE #</p> <p>D704</p> <p>JOB #</p> <p>F:\P\2021-016</p> <p>DRAWN BY</p> <p>AJV</p> <p>CHKD BY</p> <p>BGL</p> <p>APPD BY</p> <p>BGL</p>				
<p>HANOVER WASHINGTON L.P.</p> <p>"BETWEEN 1167 & 1207" WASHINGTON ST.</p> <p>HANOVER MA</p> <p>DETAIL</p> <p>SHEET</p>				
		<p>KELLY ENGINEERING GROUP</p> <p>civil engineering consultants</p> <p>0 Campanelli Drive, Braitree, MA 02184</p> <p>Phone: 761-843-4333 www.kellyengineeringgroup.com</p>		



Brandon Li
2023.11.27
14:01:17
-05'00'

SHEET NO.

8