

# SITE DEVELOPMENT PLANS

FOR

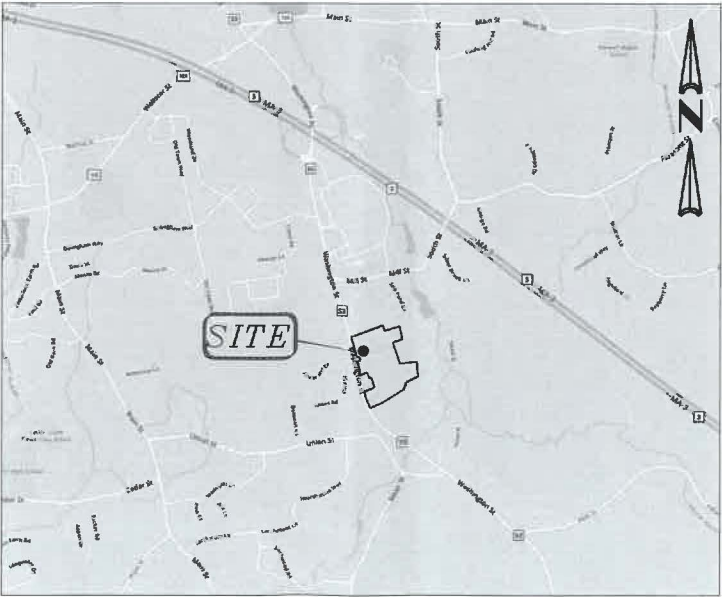
## BETWEEN 1167 & 1207 WASHINGTON ST. HANOVER, MA

SEPTEMBER 26, 2022

SHEET INDEX						
SHEET No.	DESCRIPTION	LATEST REVISED DATE	CONSTRUCTION	REVISIONS		
1	COVER SHEET					
2	OVERALL LAYOUT PLAN					
3	EXISTING CONDITIONS PLAN					
4	LAYOUT PLAN					
5	GRADING PLAN					
6	SEWER, DRAIN & UTILITY PLAN					
7	DETAIL SHEET					
8	DETAIL SHEET					

**OWNER/ APPLICANT:**  
HANOVER WASHINGTON LIMITED PARTNERSHIP  
625 MT. AUBURN ST.  
SUITE 210  
CAMBRIDGE, MA 02138

**CIVIL ENGINEERS:**  
KELLY ENGINEERING GROUP, INC.  
0 CAMPANELLI DRIVE  
BRAINTREE, MA 02184



LOCATION MAP



SCALE	JOB #
NA	F:\P\2021-016
DATE	DRAWN BY
09/28/22	C.J.L.
SHEET	CHKD BY
1 of 8	BGL
FILE #	APPD BY
TS00	DNK

BETWEEN 1167 & 1207 WASHINGTON ST.  
HANOVER, MA

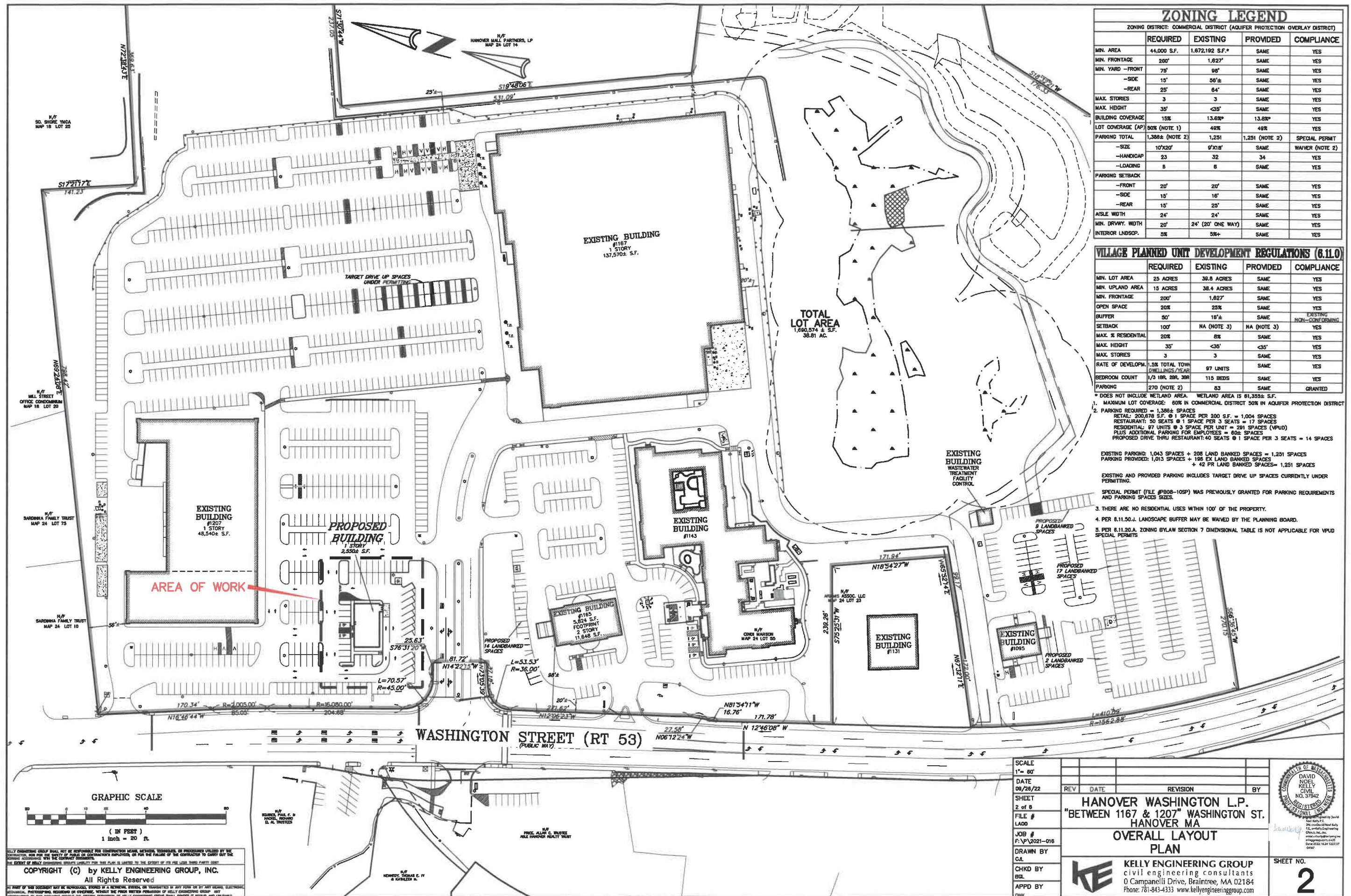


**KELLY ENGINEERING GROUP**  
civil engineering consultants  
0 Campanelli Drive, Braintree, MA 02184  
Phone: 781-843-4333 www.kellyengineeringgroup.com

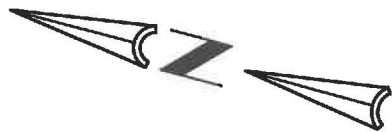
SHEET NO.  
**1**

KELLY ENGINEERING GROUP SHALL NOT BE RESPONSIBLE FOR CONSTRUCTION METHODS, TECHNIQUES, OR PROCEDURES UTILIZED BY THE CONTRACTOR, NOR FOR THE SAFETY OF PUBLIC OR CONTRACTOR'S EMPLOYEES, OR FOR THE FAILURE OF THE CONTRACTOR TO CARRY OUT THE WORKING ACCORDANCE WITH THE CONTRACT DOCUMENTS.  
THE EXTENT OF KELLY ENGINEERING GROUP'S LIABILITY FOR THIS PLAN IS LIMITED TO THE EXTENT OF ITS PROFESSIONAL LIABILITY.  
COPYRIGHT (C) by KELLY ENGINEERING GROUP, INC.  
All Rights Reserved  
NO PART OF THIS DOCUMENT MAY BE REPRODUCED, STORED IN A RETRIEVAL SYSTEM, OR TRANSMITTED IN ANY FORM OR BY ANY MEANS, ELECTRONIC, MECHANICAL, PHOTOCOPIING, RECORDING OR OTHERWISE, WITHOUT THE PRIOR WRITTEN PERMISSION OF KELLY ENGINEERING GROUP. ANY VIOLATION OF THIS DOCUMENT WITHOUT THE WRITTEN PERMISSION OF KELLY ENGINEERING GROUP SHALL BE PENALIZED AS APPLICABLE.





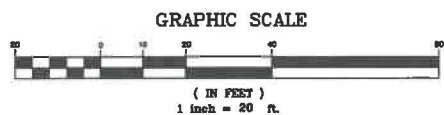




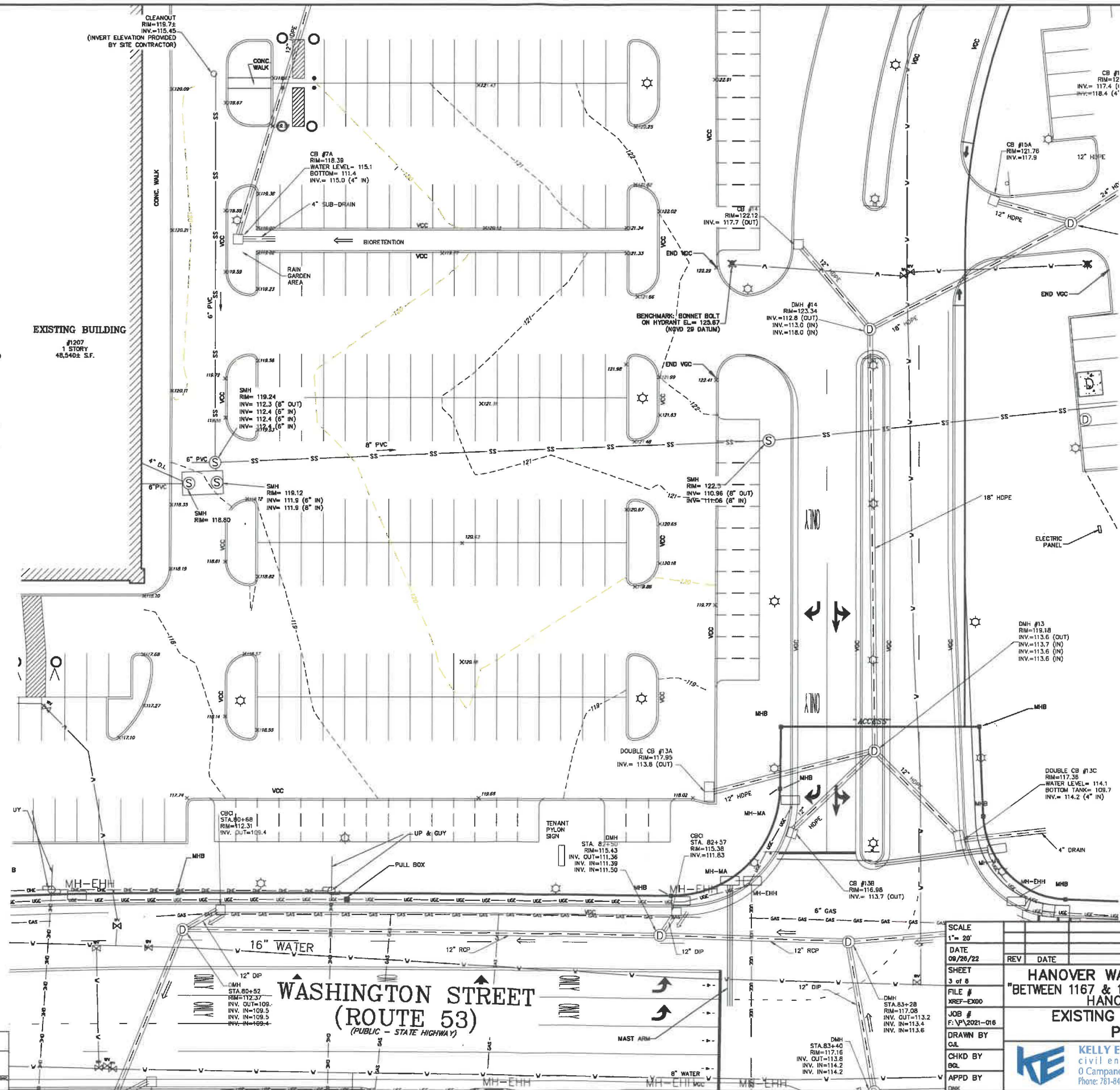
**NOTES:**  
1.) UNDERGROUND FEATURES HAVE BEEN COMPILED, IN PART, BASED UPON INFORMATION FURNISHED BY OTHERS. THIS INFORMATION IS TO BE CONSIDERED APPROXIMATE AND KELLY ENGINEERING GROUP, INC. DOES NOT TAKE RESPONSIBILITY FOR SUBSEQUENT ERRORS OR OMISSIONS WHICH MAY HAVE BEEN INCORPORATED INTO THIS PLAN AS A RESULT. ADDITIONALLY, OTHER SUCH FEATURES MAY EXIST ON THE SITE, THE EXISTENCE OF WHICH ARE UNKNOWN TO KELLY ENGINEERING GROUP, INC. THE SIZE, LOCATION, AND EXISTENCE OF ALL SUCH FEATURES MUST BE VERIFIED BY THE APPROPRIATE AUTHORITIES PRIOR TO CONSTRUCTION.  
2.) THE LOCATION OF ALL UTILITIES SHOWN HEREON HAVE BEEN ESTABLISHED USING ASCE 38-02 (STANDARD GUIDELINES FOR THE COLLECTION AND DEPICTION OF EXISTING SUBSURFACE UTILITY DATA) QUALITY LEVEL C.  
3.) THE SITE DETAIL AND SURFACE IMPROVEMENTS DEPICTED HEREON WERE OBTAINED FROM AN ON THE GROUND SURVEY PERFORMED BY KELLY ENGINEERING GROUP.  
4.) ELEVATIONS SHOWN ARE BASED ON THE NATIONAL GEODETIC VERTICAL DATUM OF 1929 (NGVD 29).

**EXISTING BUILDING**  
#1207  
1 STORY  
48,540± S.F.

LEGEND	
	DRAIN LINE
	CATCH BASIN
	DRAIN MANHOLE
	ROOF DRAIN
	SEWER LINE
	SEWER MANHOLE
	BOLLARD
	GAS VALVE
	GAS LINE
	HYDRANT
	WATER VALVE
	WATER LINE
	UTILITY POLE
	LIGHT POLE
	ELECTRIC MANHOLE
	UNDERGROUND ELECTRIC LINE
	OVERHEAD WIRES
	EDGE OF WETLANDS
	WETLANDS
	STONE WALL
	TREE LINE
	MASS. HIGHWAY/ MAST ARM
	MASS. HIGHWAY/ ELEC. HAND HOLE
	GUARDRAIL
	CHAINLINK FENCE (CLF)
	ROUND "TARGET" BOLLARD
	MONITORING WELL
	SIGN
	MASS. HIGHWAY BOUND

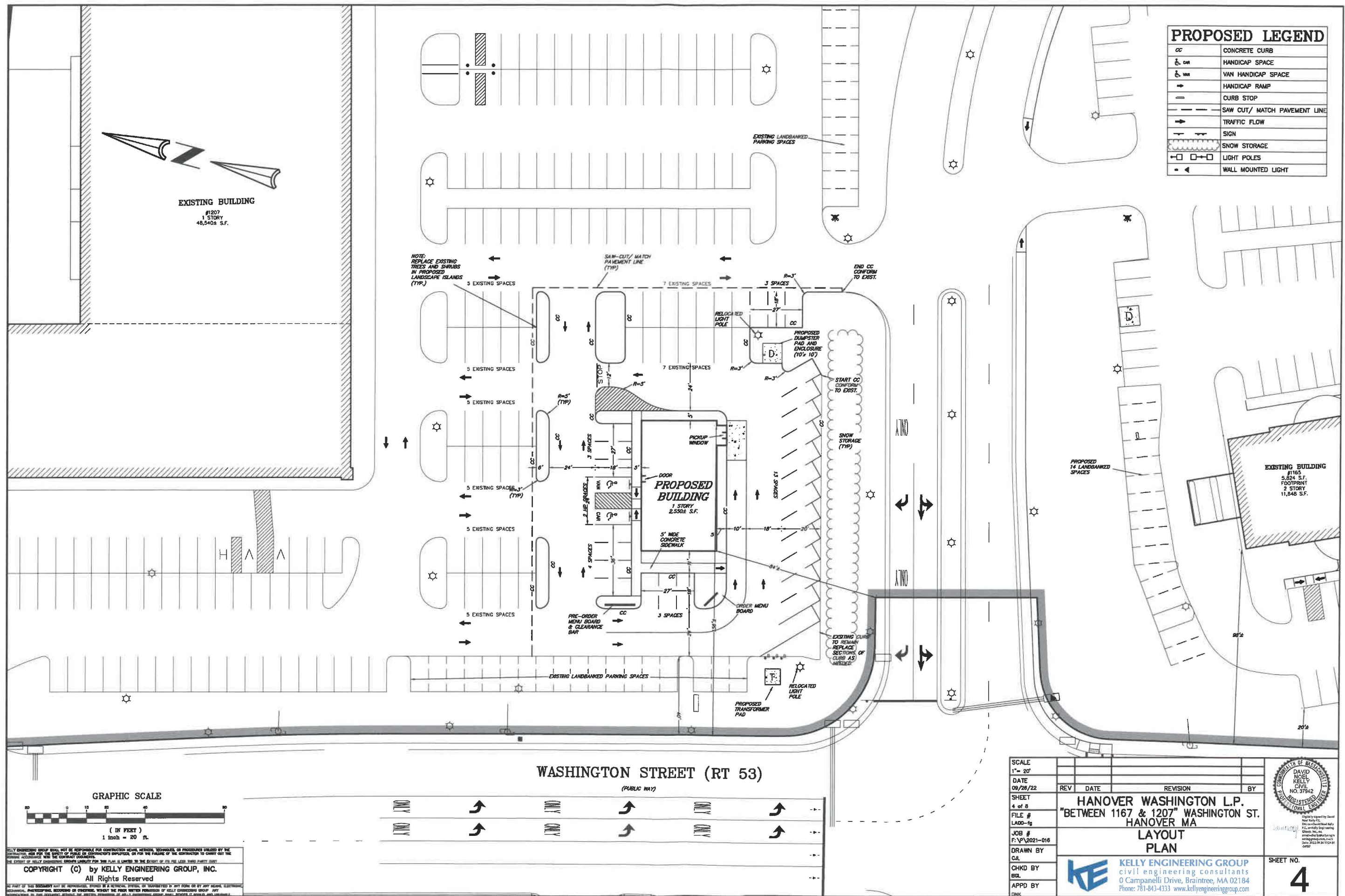


KELLY ENGINEERING GROUP SHALL NOT BE RESPONSIBLE FOR CONSTRUCTION MEANS, METHODS, TECHNIQUES, OR PROCEDURES UTILIZED BY THE CONTRACTOR, NOR FOR THE SAFETY OF PERSONS OR PROPERTY, OR FOR THE FAILURE OF THE CONTRACTOR TO CARRY OUT THE WORKING ACCORDING TO THE CONTRACT DOCUMENTS.  
THE ACTS OF KELLY ENGINEERING GROUP LIMITED FOR THIS PLAN IS LIMITED TO THE EXTENT OF THE LAST THIRD PARTY USE.  
COPYRIGHT (C) by KELLY ENGINEERING GROUP, INC.  
All Rights Reserved


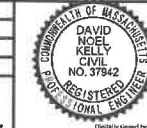


SCALE 1" = 20'	DATE 09/28/22	REVISION	BY
SHEET 3 of 8	FILE # XREF-EXD0	JOB # F:\2021-016	
DRAWN BY CUL	CHKD BY BOL	APPD BY DNK	
<b>HANOVER WASHINGTON L.P.</b> <b>"BETWEEN 1167 &amp; 1207" WASHINGTON ST.</b> <b>HANOVER MA</b> <b>EXISTING CONDITIONS</b> <b>PLAN</b>			
KELLY ENGINEERING GROUP civil engineering consultants 8 Campanelli Drive, Braintree, MA 02184 Phone: 781-843-4333 www.kellyengineeringgroup.com			
SHEET NO. <b>3</b>			

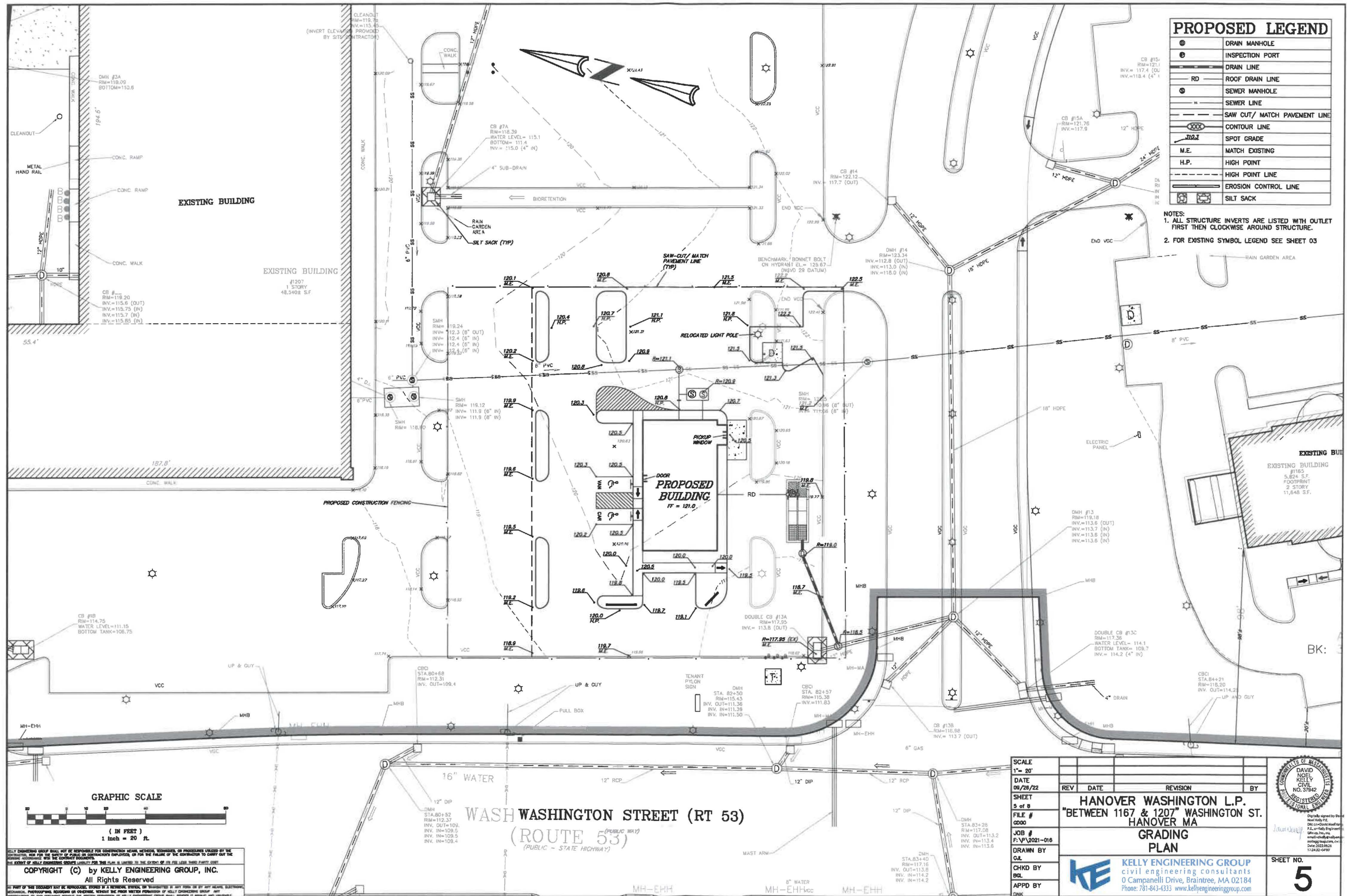




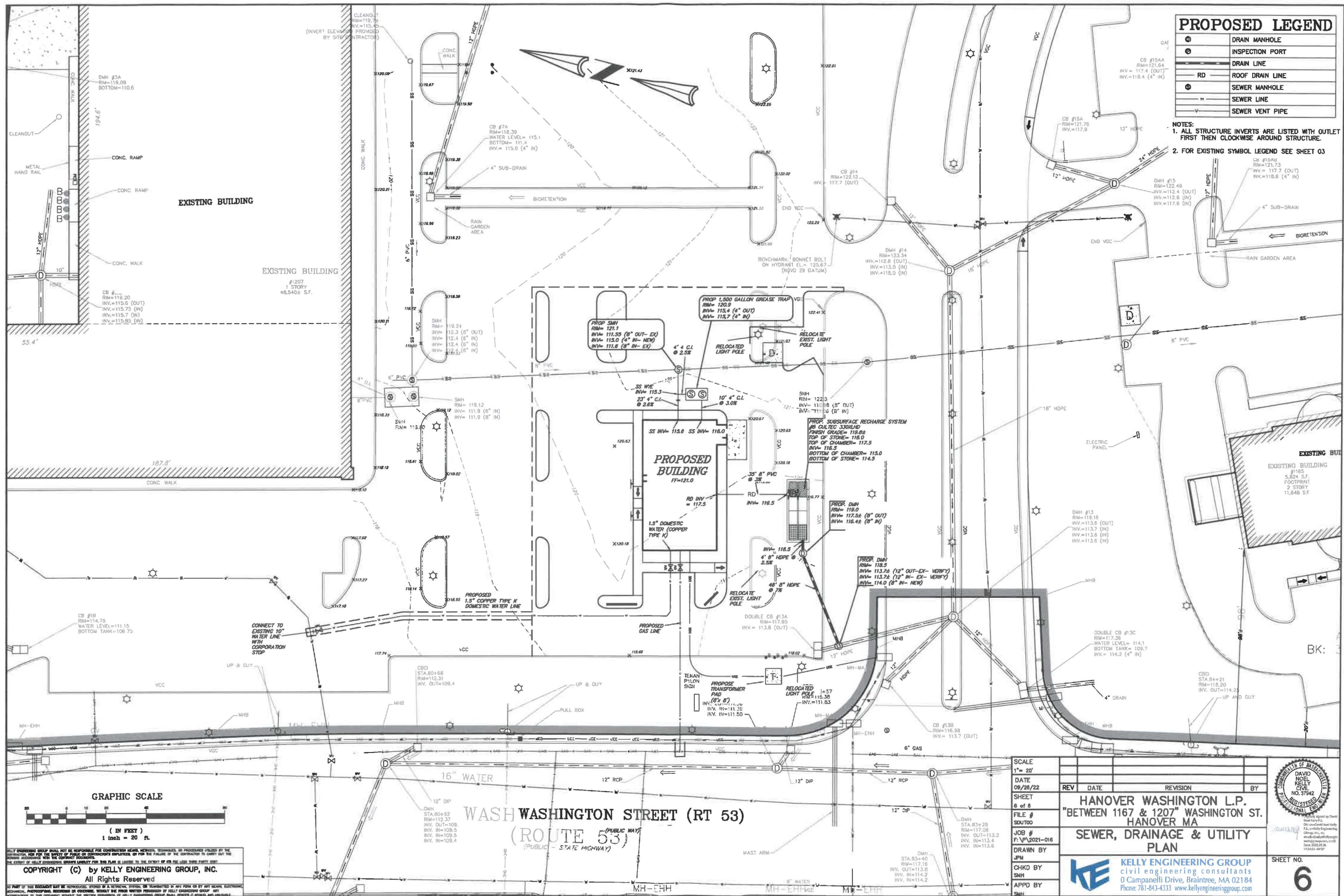
PROPOSED LEGEND	
CC	CONCRETE CURB
CH	HANDICAP SPACE
VCH	VAN HANDICAP SPACE
HR	HANDICAP RAMP
CS	CURB STOP
SL	SAW CUT/ MATCH PAVEMENT LINE
TF	TRAFFIC FLOW
SG	SIGN
SS	SNOW STORAGE
LP	LIGHT POLES
WML	WALL MOUNTED LIGHT

SCALE 1" = 20'	REV	DATE	REVISION	BY
DATE 09/28/22				
SHEET 4 of 8	HANOVER WASHINGTON L.P. "BETWEEN 1167 & 1207" WASHINGTON ST. HANOVER MA LAYOUT PLAN			
FILE # LA00-16				
JOB # F:\P\2021-016				
DRAWN BY C.A.				
CHKD BY BGL				
APPD BY CHK				
 <b>KELLY ENGINEERING GROUP</b> civil engineering consultants 0 Campanelli Drive, Braintree, MA 02184 Phone: 781-843-4333 www.kellyengineeringgroup.com				
				
SHEET NO. <b>4</b>				

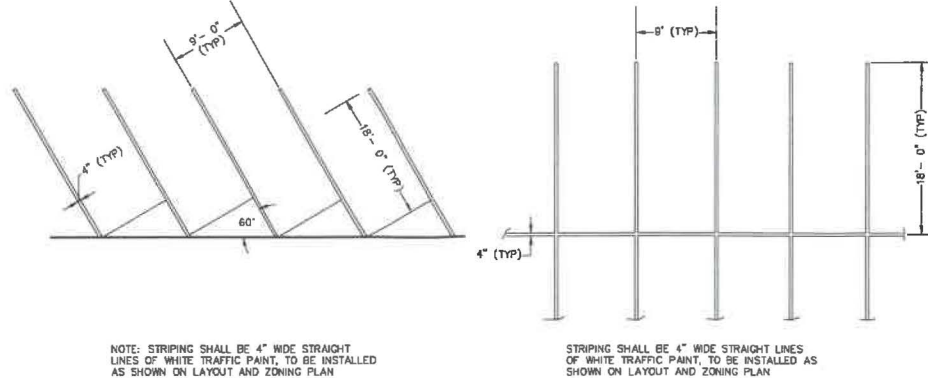
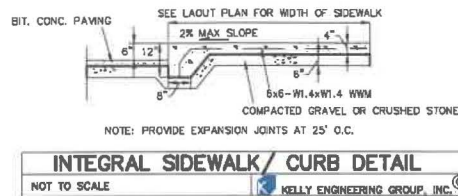
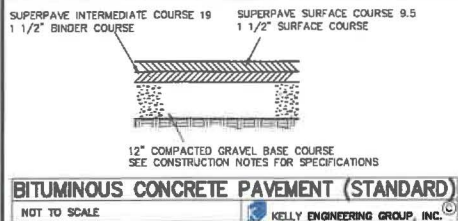












## CONSTRUCTION NOTES

A1. THE CONTRACTOR SHALL REPORT TO THE OWNER AND ENGINEER OF ANY SIGNIFICANT VARIATIONS IN EXISTING SITE CONDITIONS FROM THOSE SHOWN ON THESE PLANS. ANY PROPOSED REVISIONS TO THE WORK IF REQUIRED BY THESE SITE CONDITIONS, SHALL NOT BE UNDERTAKEN UNTIL REVIEWED AND APPROVED BY THE OWNER AND THE ENGINEER.

A2. THE CONTRACTOR SHALL NOTIFY THE TOWN OF HANOVER DEPARTMENT OF PUBLIC WORKS AT LEAST 48 HOURS IN ADVANCE OF ANY REQUIRED INSPECTIONS.

A3. IN ORDER TO PROTECT THE PUBLIC SAFETY DURING CONSTRUCTION, THE CONTRACTOR IS RESPONSIBLE FOR INSTALLING AND MAINTAINING AT ALL TIMES ALL NECESSARY SAFETY DEVICES AND PERSONNEL, WARNING LIGHTS, BARRICADES, AND POLICE OFFICERS.

A4. ALL WORK SHALL CONFORM TO A SPECIAL PERMIT TO BE ISSUED BY THE TOWN OF HANOVER.

A5. FOR ANY PROJECT THAT INVOLVES 1 ACRE OR MORE OF DISTURBANCE, THE CONTRACTOR SHALL SECURE A NPDES PERMIT PRIOR TO BEGINNING ANY GRADING ACTIVITIES.

A6. THE LOCATION OF UNDERGROUND UTILITIES AS REPRESENTED ON THESE PLANS IS BASED UPON PLANS AND INFORMATION PROVIDED BY THE RESPECTIVE UTILITY COMPANIES OR MUNICIPAL DEPARTMENTS SUPPLEMENTED BY FIELD IDENTIFICATION WHENEVER POSSIBLE. NO WARRANTY IS MADE AS TO THE ACCURACY OF THESE LOCATIONS OR THAT ALL UNDERGROUND UTILITIES ARE SHOWN. THE CONTRACTOR SHALL CONTRACT DIG SAFE AT LEAST 72 HOURS PRIOR TO THE START OF CONSTRUCTION. DIG SAFE TELEPHONE NUMBER IS 1-888-344-7233.

A7. THE CONTRACTOR SHALL VERIFY THE LOCATION, SIZE AND DEPTH OF EXISTING UTILITIES PRIOR TO TAPPING INTO, CROSSING OR EXTENDING THEM. IF THE NEW WORK POSES A CONFLICT WITH EXISTING UTILITIES, THE ENGINEER SHALL BE NOTIFIED PRIOR TO THE CONTRACTOR CONTINUING.

A8. REFER TO ARCHITECTURAL PLANS FOR EXACT BUILDING DIMENSION AND DOOR LOCATIONS.

A9. ALL PROPOSED SITE GAS, ELECTRIC, TELEPHONE, CATV FEATURES SHOWN ON SITE DEVELOPMENT PLANS ARE INTENDED AS A GUIDE ONLY. FINAL CONFIGURATION TO BE CONFIRMED WITH PROJECT MEP ENGINEER AND UTILITY PROVIDER.

B1. REFER TO PLUMBING PLANS FOR EXACT SIZE AND LOCATION OF SANITARY AND WATER CONNECTIONS.

B2. REFER TO ELECTRICAL PLANS FOR THE LIGHTING CIRCUITS, FIXTURE DETAIL AND BUILDING CONNECTION LOCATION.

B3. ALL H.D.P.E. HIGH DENSITY POLYETHYLENE PIPE SHALL BE ADS N-12 OR APPROVED ALTERNATE. SEWER SHALL BE SDR 35 WITH RUBBER RING JOINTS. WATER LINES SHALL BE CL 32 D.I.P. (DUCTILE IRON PIPE), REINFORCED CONCRETE PIPE RCP SHALL BE CLASS III.

B4. NO LEDGE, BOULDERS, OR OTHER UNYIELDING MATERIALS ARE TO BE LEFT WITHIN 6\"/>

C1. WALKS SHALL BE 4\"/>

C2. BASE MATERIAL SHALL BE CLEAN BANK RUN GRAVEL, CONFORMING TO M.D.P.M. M10.31, WITH NO STONES LARGER THAN THREE (3) INCHES IN DIAMETER AND SHALL BE PLACED AND ROLLED WITH AT LEAST A TEN TON ROLLER. THE SURFACES SHALL BE WET DURING ROLLING TO BIND THE MATERIAL. ALL STONES OF 4\"/>

C3. TRANSFORMER PAD SHALL BE INSTALLED PER PROVIDER'S SPECIFICATIONS.

C4. PAVEMENT AREA SHALL BE PAVED TO A THICKNESS AS SHOWN ON THE PLANS MEASURED AFTER COMPACTION, WITH A SUPERPAVE INTERMEDIATE COURSE AND SUPERPAVE SURFACE COURSE.

C5. THE AGGREGATE SHALL BE COMPOSED, MIXED AND LAID HOT IN TWO COURSES AS SPECIFIED IN THE "COMMONWEALTH OF MASSACHUSETTS STANDARD SPECIFICATIONS FOR HIGHWAYS AND BRIDGE", 2021 EDITION, SECTION 460 HOT MIX ASPHALT PAVEMENT FOR LOCAL STREETS.

C6. DUMPSTER PAD SHALL BE 8\"/>

C7. ALL EXISTING PAVING TO BE DISTURBED SHALL BE CUT ALONG A STRAIGHT LINE THROUGH ITS ENTIRE THICKNESS, BUTT NEW PAVING INTO THE EXISTING PAVEMENT TO REMAIN AND TACK COAT THE JOINT.

C8. ANY PAVEMENT REMOVED FOR UTILITY TRENCH EXCAVATION OR OTHERWISE DAMAGED DURING CONSTRUCTION SHALL BE REPLACED WITH A PAVEMENT SECTION CONSISTING OF 1\"/>

D1. ALL AREAS TO BE PLANTED WITH GRASS SHALL BE TREATED WITH 100 POUNDS OF GROUND LIME/STONE PER 1,000 S.F. OF AREA PLANTED. ALL AREAS TO BE PLANTED WITH GRASS SHALL BE FERTILIZED WITH 10-10-10 AT THE RATE OF 1,000 POUNDS PER ACRE OR AS REQUIRED BY SOIL TEST. 40% OF THE NITROGEN SHALL BE ORGANIC FORM.

D2. ALL LANDSCAPED AREAS TO BE LOAMED AND SEEDING SHALL HAVE THE FOLLOWING MIX:

PERENNIAL RYE	25%
KENTUCKY BLUE	25%
CREeping RED FESCUE OR PENN. BLUE FESCUE	50%

SEED AT THE RATE OF 5#/1,000 S.F.

D3. ALL DISTURBED AREAS TO BE TAPPED AND SEEDING SHALL HAVE A MINIMUM OF 4 INCHES OF TOPSOIL SPREAD EVENLY THROUGHOUT. PROVIDE EROSION CONTROL MEASURES AS NECESSARY TO PROVIDE SLOPE STABILITY UNTIL VEGETATION IS ESTABLISHED. (NOTE: IF THERE IS A CONFLICT BETWEEN THESE PLANS AND LANDSCAPE PLANS THE LANDSCAPE PLANS SHALL PREVAIL.)

E1. THE CONTRACTOR SHALL REGULARLY INSPECT THE PERIMETER OF THE PROPERTY TO CLEANUP AND REMOVE LOOSE CONSTRUCTION DEBRIS BEFORE IT LEAVES THE SITE. ALL DEMOLITION DEBRIS SHALL BE PROMPTLY REMOVED FROM THE SITE TO A LEGAL DUMP SITE. ALL TRUCKS LEAVING THE SITE SHALL BE COVERED.

E2. IT SHALL BE THE RESPONSIBILITY OF THE CONTRACTOR TO INSTITUTE EROSION CONTROL MEASURES ON AN AS NECESSARY BASIS, SUCH THAT EXCESSIVE SOIL EROSION DOES NOT OCCUR. MEASURES SHALL INCLUDE SILT SACKS IN DRAINAGE INLETS, MULCHING AND PLANTING OF DISTURBED AREAS.

E3. PRIOR TO THE COMMENCEMENT OF ANY OTHER WORK A SILT SACK SHALL BE INSTALLED IN EACH EXISTING DRAINAGE INLET.

E4. AFTER INSTALLATION OF EACH DRAINAGE INLET A SILT SACK SHALL BE INSTALLED IN EACH INLET TO PREVENT SEDIMENT FROM ENTERING THE STORM DRAIN SYSTEM.

E5. AT THE END OF CONSTRUCTION ALL DRAINAGE STRUCTURES ARE TO BE CLEANED OF SILT, STONES AND OTHER DEBRIS.

E6. DURING CONSTRUCTION THE EROSION CONTROL MEASURES SHALL BE INSPECTED ONCE PER WEEK AND WITHIN 24 HOURS OF ANY STORM EVENT GENERATING MORE THAN 1\"/>

E7. STABILIZATION MEASURES (SEEDING OR PLANTING, APPLYING MULCH OR OTHER NON-VEGETATIVE PRODUCTS) OF EXPOSED SOILS SHALL BEGIN AS SOON AS PRACTICABLE, AND IMMEDIATELY AFTER EARTH-DISTURBING ACTIVITIES HAVE PERMANENTLY OR TEMPORARILY CEASED. STABILIZATION TO BE COMPLETED WITHIN 14 DAYS.

E8. SILT SOCKS SHALL BE INSTALLED ON THE DOWNSTREAM SIDE OF ALL STOCK PILES.

E9. SPARE EROSION/SEDIMENT CONTROL MATERIALS SHALL BE AVAILABLE ON SITE FOR USE IN CONTINGENCY CONDITIONS.

## HANOVER WATER DEPARTMENT NOTES

1. AT ALL WATER MAIN AND SEWER CROSSING, ONE FULL LENGTH OF WATER PIPE SHALL BE LOCATED SO BOTH JOINTS WILL BE AS FAR FROM THE SEWER AS POSSIBLE.

2. SEWER MATERIALS SHALL BE WATER WORKS GRADE 150 PSI PRESSURE RATED PIPE MEETING LATEST AWWA STANDARDS AND SHALL BE PRESSURE TESTED TO ENSURE TIGHTNESS.

3. ALL PIPE 3 INCH THROUGH 84 INCH SHALL CONFORM IN DESIGN AND MANUFACTURE TO THE LATEST ISSUE OF AWWA STANDARD C 151, "DUCTILE IRON PIPE, CENTRIFUGALLY CAST, FOR WATER OR OTHER LIQUIDS." PIPE SHALL HAVE A PRESSURE CLASS OF 350.

4. ALL FITTINGS SHALL BE DUCTILE IRON AND CONFORM IN DESIGN AND MANUFACTURE TO THE LATEST ISSUE OF AWWA STANDARD C 110, "DUCTILE IRON AND GRAY-IRON FITTINGS," 3-INCH THROUGH 48-INCH FOR WATER AND OTHER LIQUIDS.

5. ALL PIPE AND FITTINGS SHALL HAVE A CEMENT-MORTAR LINING INSIDE AND A BITUMINOUS SEAL COAT APPLIED BOTH INSIDE AND OUTSIDE TO CONFORM WITH LATEST ISSUE OF AWWA C104, CEMENT-MORTAR LINING FOR DUCTILE-IRON PIPE AND FITTINGS FOR WATER.

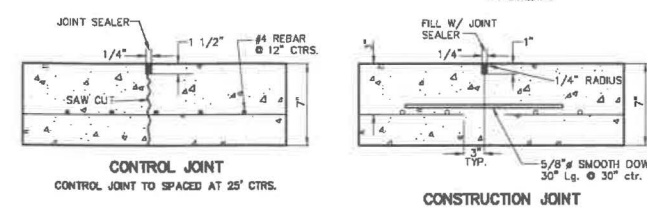
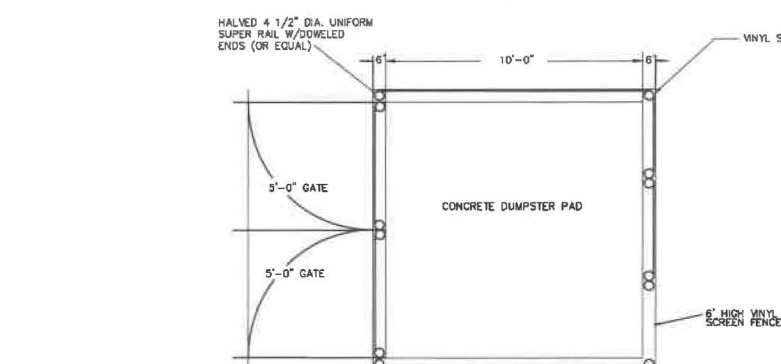
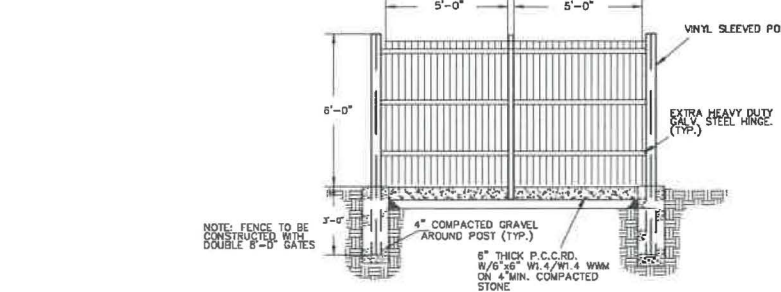
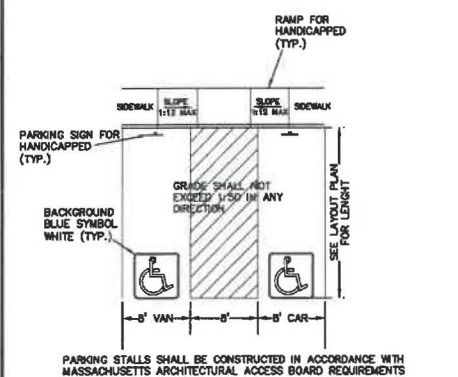
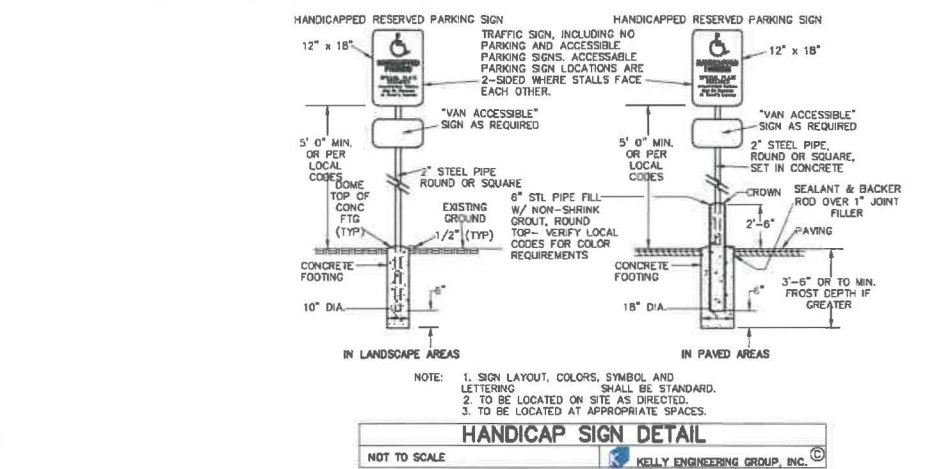
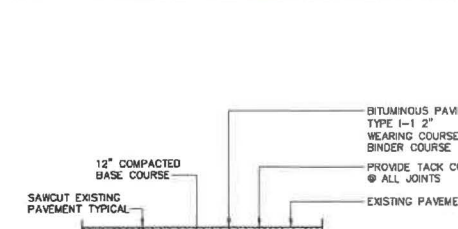
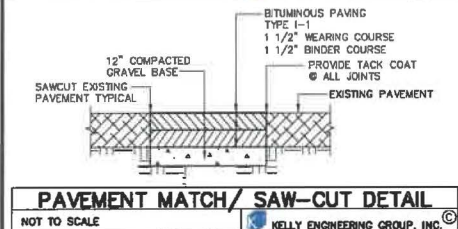
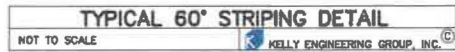
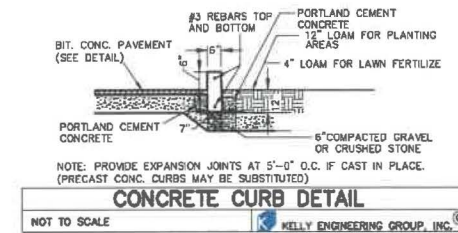
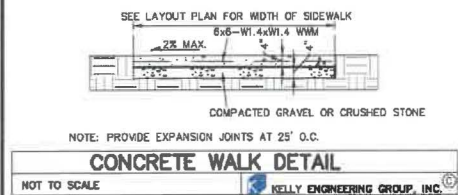
6. PUSH-ON AND MECHANICAL JOINTS ARE PERMITTED AND SHALL CONFORM IN DESIGN AND MANUFACTURE TO THE LATEST ISSUE OF AWWA STANDARD C 111, "RUBBER-GASKET JOINTS FOR DUCTILE-IRON PRESSURE PIPE AND FITTINGS."

7. ALL VALVES SHALL CONFORM IN DESIGN AND MANUFACTURE TO THE LATEST ISSUE OF AWWA STANDARD C200, "PRESSURIZED-SEATED GATE VALVES FOR WATER SUPPLY SERVICE." ALL VALVES SHALL HAVE A TWO-INCH OPERATING NUT AND OPEN IN A COUNTER-CLOCKWISE DIRECTION. THE TOWN RECOMMENDS USING MUELLER VALVES (A2382 FULL-BOODY).

8. ALL HYDRANTS SHALL CONFORM IN DESIGN AND MANUFACTURE TO THE LATEST ISSUE OF AWWA STANDARD C202, "DRY BARRIE FIRE HYDRANTS" AND MEET ANY REQUIREMENTS OF THE HANOVER FIRE DEPARTMENT. ALL HYDRANTS SHALL HAVE A MAIN VALVE OPENING OF 5.33 INCHES AND SHALL OPEN IN A COUNTERCLOCKWISE DIRECTION. THE TOWN RECOMMENDS USING MUELLER HYDRANTS (A423/5.25").

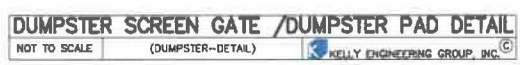
9. WATER SERVICE PIPE SHALL BE AT LEAST THREE-FOURTHS-INCH, TYPE K COPPER IN ACCORDANCE WITH THE LATEST ISSUE OF AWWA C900, "UNDERGROUND SERVICE LINE VALVES AND FITTINGS."

10. WATER METERS (CONSUMPTION) SHALL BE PROVIDED BY THE CONTRACTOR AND SHALL MEET THE SPECIFICATIONS OF THE TOWN OF HANOVER.



KELLY ENGINEERING GROUP SHALL NOT BE RESPONSIBLE FOR CONSTRUCTION METHOD, MATERIALS, OR PROCEDURES UTILIZED BY THE CONTRACTOR AND FOR THE QUALITY OF THE WORK. THE CONTRACTOR SHALL BE RESPONSIBLE FOR THE QUALITY OF THE WORK. THE CONTRACTOR SHALL BE RESPONSIBLE FOR THE QUALITY OF THE WORK. THE CONTRACTOR SHALL BE RESPONSIBLE FOR THE QUALITY OF THE WORK.

COPYRIGHT (C) by KELLY ENGINEERING GROUP, INC.  
All Rights Reserved



SCALE	DATE	REV	DATE	REVISION	BY
NA	09/28/22				
SHEET	7 of 8				
FILE #	2021-016-DT00				
JOB #	FV2021-016				
DRAWN BY	CL				
CHKD BY	BL				
APPD BY	DNK				

**HANOVER WASHINGTON L.P.**  
"BETWEEN 1167 & 1207" WASHINGTON ST.  
HANOVER MA

**DETAIL SHEET**

**KELLY ENGINEERING GROUP**  
civil engineering consultants  
0 Campanelli Drive, Baintree, MA 02184  
Phone: 781-843-4333 www.kellyengineeringgroup.com

DAVID KELLY  
REGISTERED PROFESSIONAL ENGINEER  
NO. 37542

7





Diagram illustrating the cross-section of a trench with various dimensions and construction requirements:

- TRENCH WIDTH:** WS OR WU
- WS/2 OR WU/2:** Dimension from the trench wall to the centerline.
- LINE OF NARROW TRENCH LIMIT:** The boundary of the narrow trench.
- PROVIDE 5' MIN. COVER:** Requirement for the trench cover.
- NO LEDGE OR UNEAVENED MATERIAL:** Requirement for the trench bottom.
- SMALL PROJECT BEYOND THIS LINE:** Requirement for the trench bottom.
- PIPE SIZE AND TYPE AS SPECIFIED IN PLAN VIEW AND CONSTRUCTION NOTES:** Requirement for the pipe.
- PAYMENT LIMITS FOR ROCK EXCAVATION:** Requirement for the rock excavation.
- UNDISTURBED MATERIAL:** Requirement for the material below the trench.
- COMPACTED SCREENED GRAVEL OR OTHER MATERIAL AS SPECIFIED BY PIPE MANUFACTURER OR LOCAL REQUIREMENTS:** Requirement for the material above the trench.
- HALF SECTION IN EARTH:** Dimension for the half section in earth.
- HALF SECTION IN ROCK:** Dimension for the half section in rock.

WATER TRENCH SECTION  
NOT TO SCALE  
KELLY ENGINEERING GROUP, INC. ©



BASED ON INTERNAL PRESSURE OF 80 PSI

CROSS

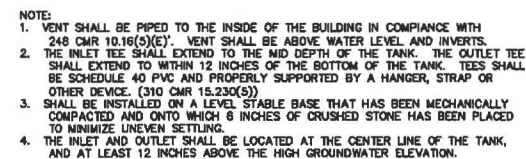
ALL CONCRETE SHALL BE 2500 P.S.I.

TEE AND WYE

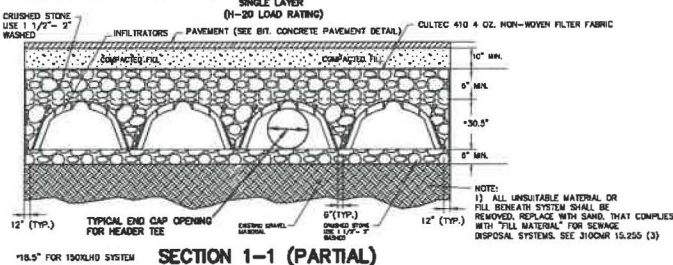
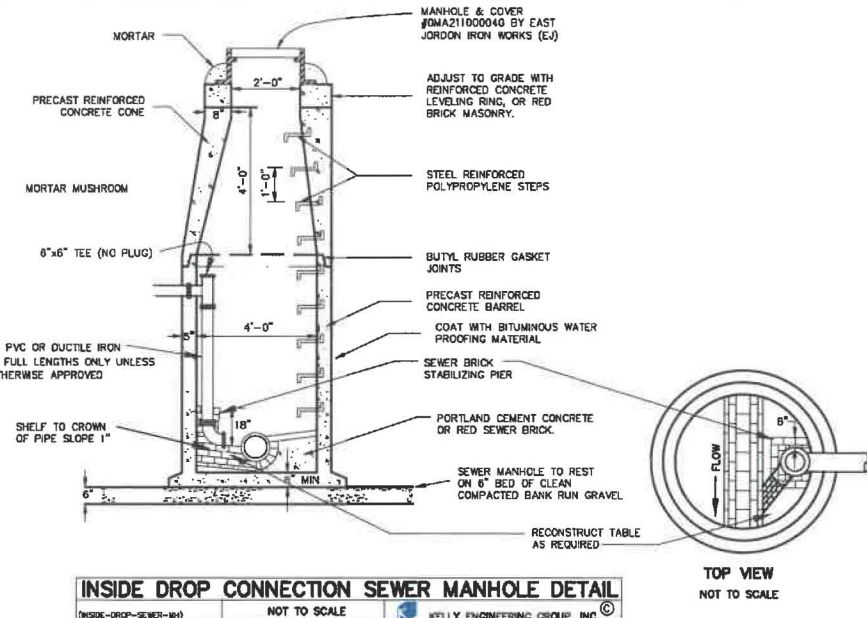
45° AND 22 1/2° BEND

90° BEND

THRUST BLOCK  
NOT TO SCALE  
KELLY ENGINEERING GROUP, INC. ©



1,500 GALLONS PRECAST GREASE TRAP		
NOT TO SCALE		KELLY ENGINEERING GROUP, INC. ©



**STORMWATER MANAGEMENT SYSTEM CONSTRUCTION OPERATION + MAINTENANCE NOTES:**

1. EXTREME CARE SHALL BE TAKEN DURING CONSTRUCTION TO AVOID SILTATION DURING THE CONSTRUCTION PROCESS. SILT CATCHES AND HALF-PIPE SHALL BE INSPECTED DAILY AND REPLACED IF NECESSARY
2. ALL RECHARGE SHALL BE TAKEN TO PREVENT CAUSING OF UNDISTURBED SOILS BENEATH RECHARGE SYSTEM.
3. THERE SHALL BE NO DISCHARGE OF WATER FOR CONSTRUCTION DEWATERING ACTIVITIES INTO THE STORMWATER MANAGEMENT SYSTEM.
4. THERE SHALL BE NO DISCHARGE OF STORMWATER INTO THE RECHARGE SYSTEM UNTIL THE SITE HAS BEEN STABILIZED.

### CONSTRUCTION INSPECTION SCHEDULE

1. WEEKLY INSPECTIONS SHALL BE PERFORMED BY THE APPLICANTS ENGINEER AND A REPRESENTATIVE FROM THE TOWN'S ENGINEERING DEPARTMENT.
2. INSPECTIONS SHALL INCLUDE THE PAVEMENT TO DETERMINE IF ACCUMULATED SEDIMENT IS TO BE REMOVED, OF THE CATCH BASINS TO DETERMINE DEPTH OF SEDIMENTS AND REQUIRED CLEANING, INSPECTION OF THE STORMSECTOR TO DETERMINE IF CLEANING IS NECESSARY AND INSPECTION OF THE LEACHING SYSTEM SHALL BE CONDUCTED BY THE ENGINEER AND THE TOWN'S ENGINEERING DEPARTMENT.
3. AN INSPECTION OF THE EXCAVATION OF THE LEACHING SYSTEM SHALL BE CONDUCTED BY THE ENGINEER AND A REPRESENTATIVE OF THE TOWN'S ENGINEERING DEPARTMENT PRIOR TO PLACEMENT OF ANY MATERIAL OR CHAMBERS.

1. WHEN THE BINDER COURSE HAS BEEN INSTALLED THE PAVEMENT SHALL BE KEPT CLEAR OF ACCUMULATED SEDIMENTS. IF ACCUMULATED SEDIMENTS ARE DEPOSITED ON THE PAVEMENT THE SEDIMENT SHALL BE CLEANED IMMEDIATELY. THE PAVEMENT SHALL BE SWEEP AS NECESSARY BASED ON THE WEEKLY INSPECTIONS. THE CONTRACTOR SHALL INSPECT THE PAVEMENT ON A DAILY BASIS AND REMOVE ACCUMULATED SEDIMENTS AS NECESSARY.
2. "SILT SACKS" SHALL BE INSTALLED AT ALL CATCH BASIN AND DROP INLET LOCATIONS. THE CONTRACTOR SHALL INSPECT THE "SILT SACKS" ON A WEEKLY BASIS AND AFTER HEAVY RAINSTORMS AND EMPTIED BASED ON MANUFACTURERS RECOMMENDATIONS.
3. THE CATCH BASINS SHALL BE INSPECTED ON A WEEKLY BASIS AND AFTER HEAVY RAINSTORMS. THE CATCH BASINS SHALL BE CLEANED WHEN "B" OF SEDIMENT HAS ACCUMULATED IN THE SUMP.
4. THE STORMCATCHER SHALL BE INSPECTED ON A WEEKLY BASIS AND AFTER HEAVY RAINSTORMS. THE STORMCATCHER SHALL BE CLEANED BASED ON THE MANUFACTURERS RECOMMENDATIONS.
5. THE INFILTRATION GALLEYS SHALL BE INSPECTED ON A WEEKLY BASIS AND AFTER HEAVY RAINSTORMS AND SHALL BE CLEANED WHEN 75% OF SEDIMENT HAS ACCUMULATED IN THE INLET CHAMBER.

INFILTRATOR SUBSURFACE DETENTION		
AREA PLAN VIEW		
NOT TO SCALE	(INFIL-SUB-DET)	VELLY ENGINEERING GROUP, INC. ©

**Copyright (C) by KELLY ENGINEERING GROUP, INC.**  
All Rights Reserved

Digitally signed by David Noel Kelly P.E.  
DN: cn=David Noel Kelly P.E., o=Kelly Engineering Group, Inc., ou, email=dnoel@kellyengineeringgroup.com, c=US  
Date: 2022.09.26  
17:25:42 -0400

SHEET NO.  
8

SCALE				
NA				
DATE				
06/28/22	REV	DATE	REVISION	BY
SHEET	<b>HANOVER WASHINGTON L.P.</b> <b>"BETWEEN 1167 &amp; 1207" WASHINGTON ST.</b> <b>HANOVER MA</b>			
8 of 8				
FILE #				
2021-016-DT00				
JOB #	<b>DETAIL</b> <b>SHEET</b>			
F:\P\2021-016				
DRAWN BY				
CJL				
CHKD BY				
BGL				
APPD BY				
DATE				