

Hanover Branch Rail Trail

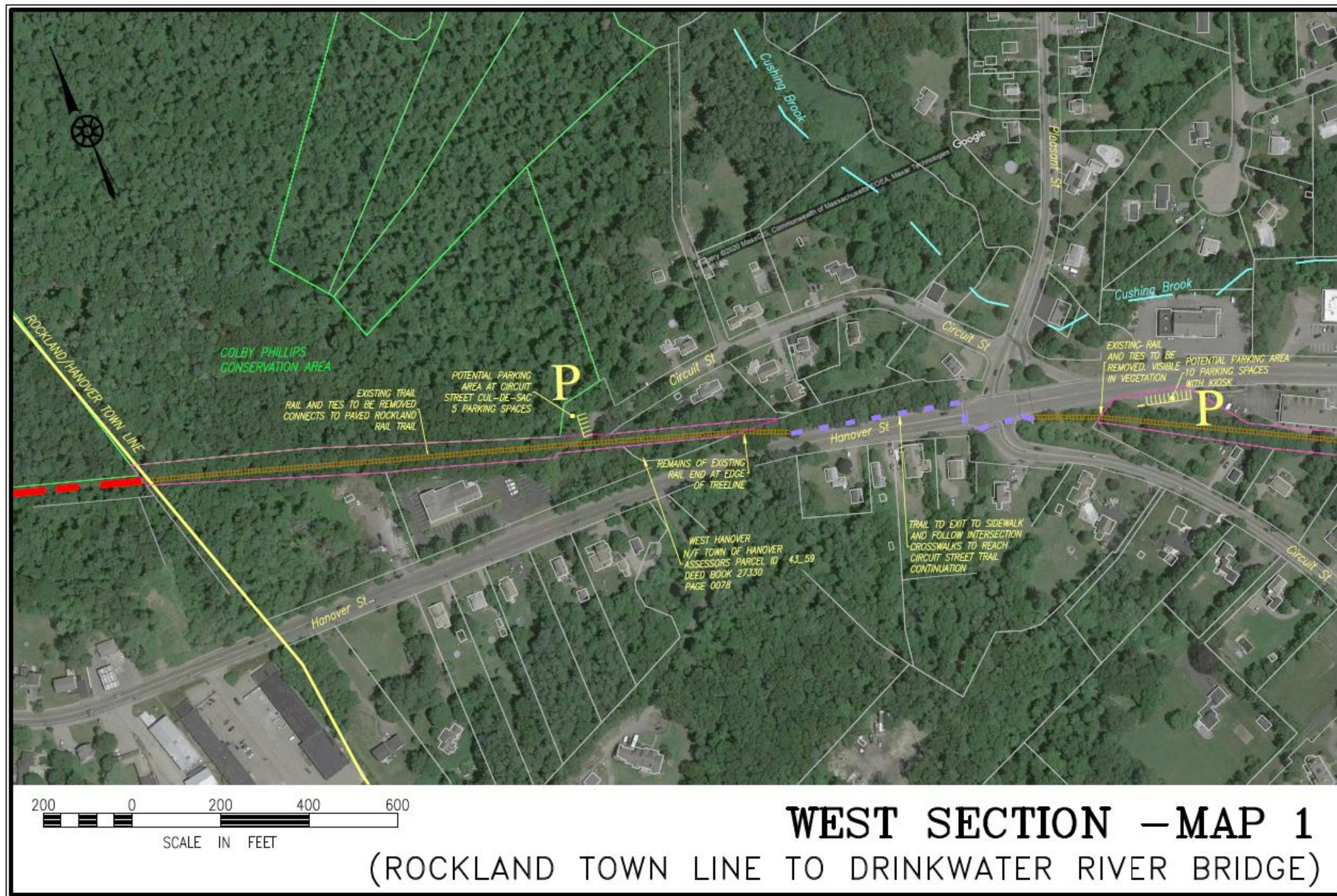
West Hanover

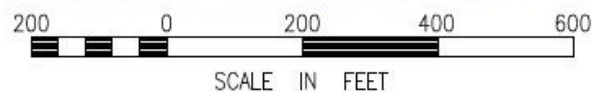
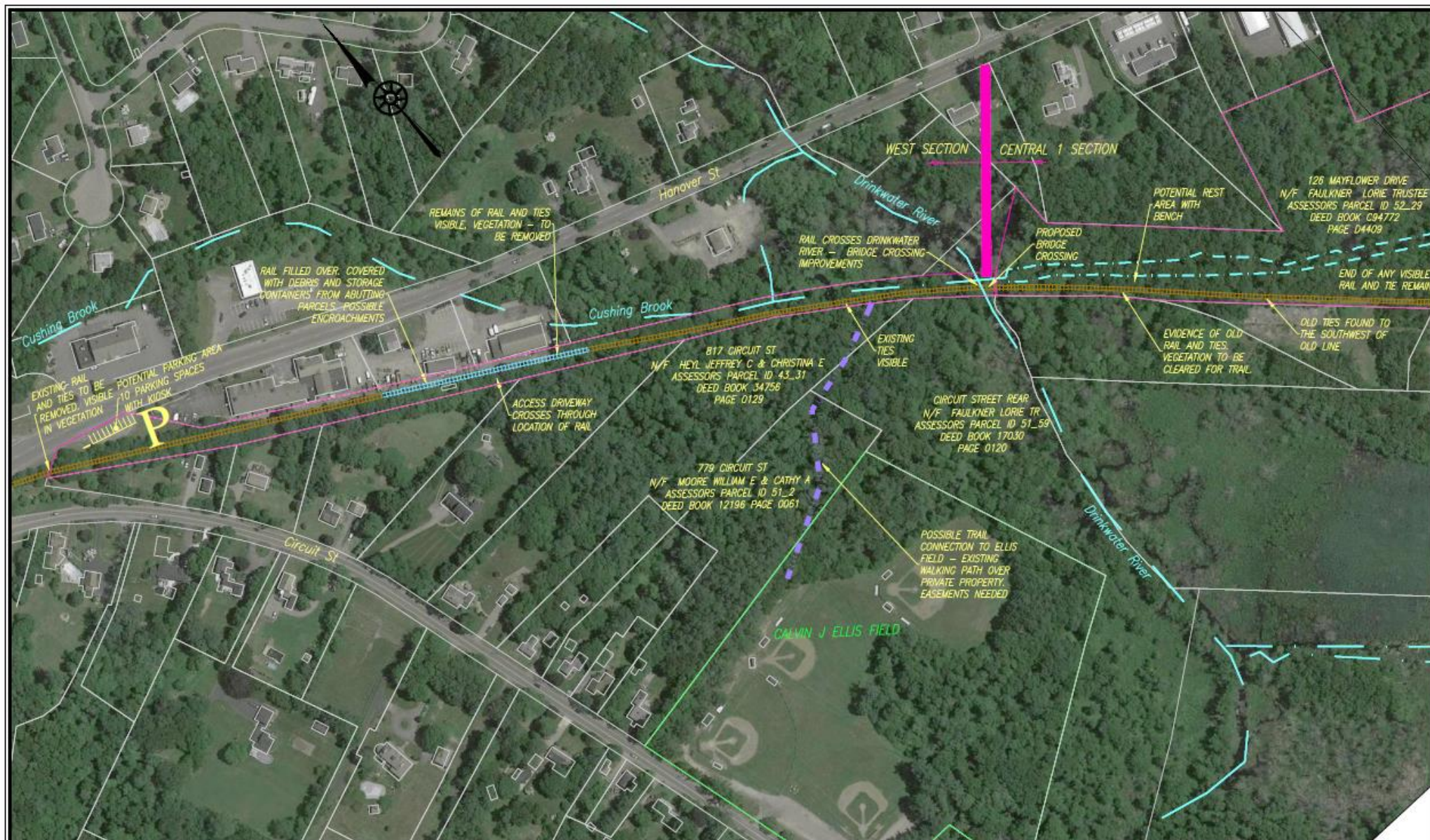
What is a Rail Trail?

- Recreational path that re-uses an old rail bed
- Access deep into nature on a smooth flat surface
- Handicap accessible
- Perfect for cycling
- Safe place for runners
- Quiet pathway to go for a walk
- Connects different parts of town
- Like a sidewalk without the cars

Where is the proposed project?

- Begins on the Hanover/Rockland town line
- Connects to the Hanover Branch Rail Trail which starts in Abington
- Has existing trail connections to the Colby-Phillips Trails
- Continues through West Hanover Square
- Has an existing parking area on Hanover Street
- Re-enters woods along Cushing Brook
- Continues to the Drinkwater River crossing behind Ellis Field





WEST SECTION - MAP 2

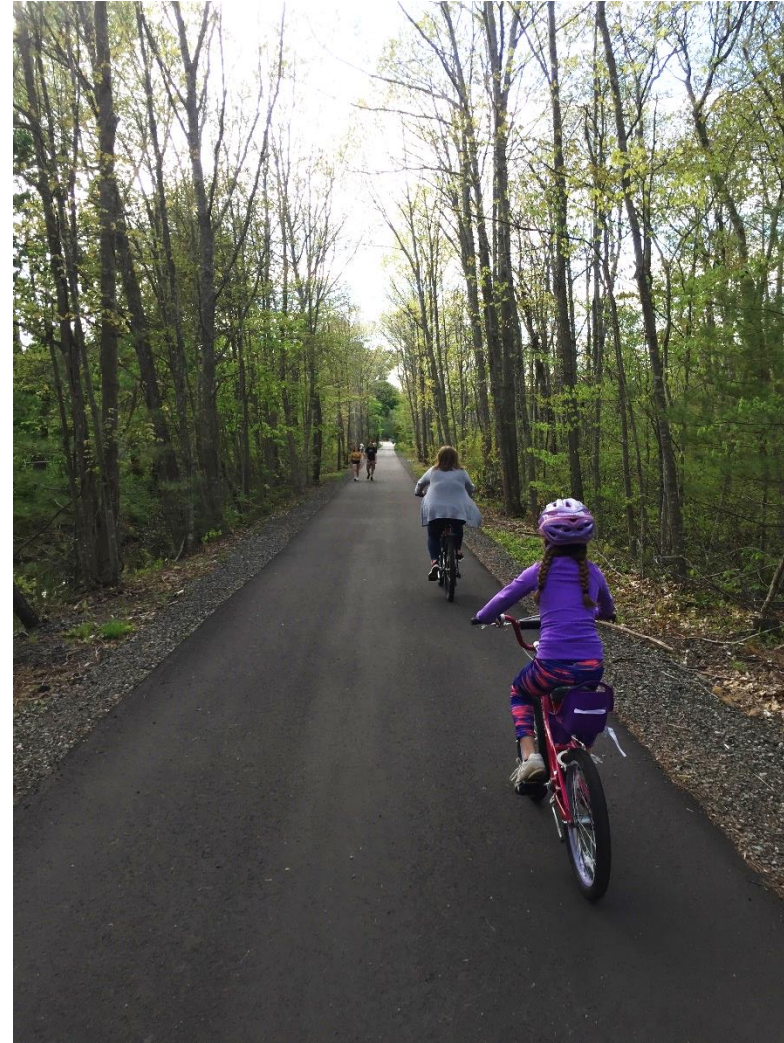
(ROCKLAND TOWN LINE TO DRINKWATER RIVER BRIDGE)

What's the big idea?

Before

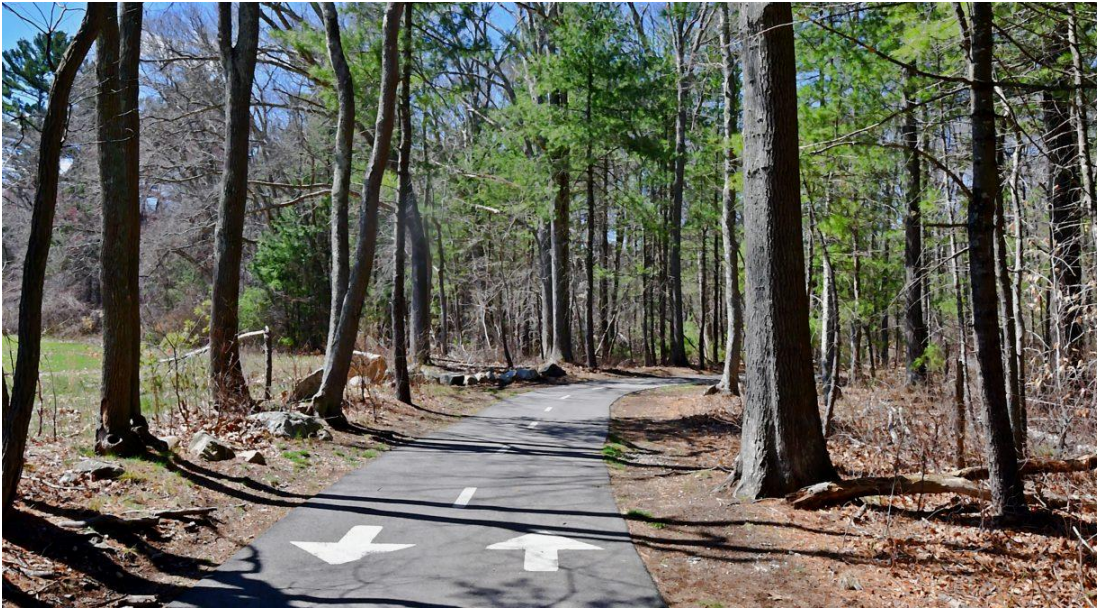


After

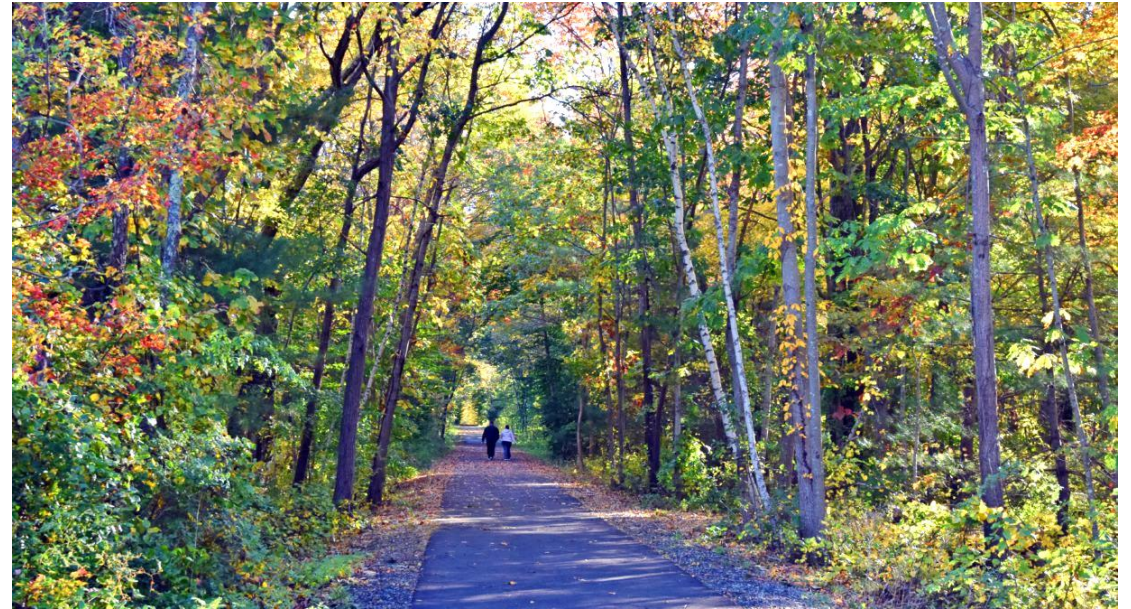


Who has trails like this?

Norwell – Norwell Pathway



Rockland – Hanover Branch Rail Trail



Who else has trails like this?

Cape Cod - Cape Cod Rail Trail



Plymouth – North Plymouth Rail Trail



How much does it cost?

Municipal Cost Estimate	\$234,612
Public Procurement - High Estimate	\$401,842
CPA Request	\$250,000
MassTrails DCR Grant Request	\$268,960
Masstrails Funding	To be awarded in June, 2021
	Up to 80% of project cost
	Costs reimbursed by grant award

Is this right for Hanover?

- Do we have an existing rail bed? Yes.
- Is there community interest in this project? Yes.
- Will this benefit Hanover residents? Yes.
- Will this benefit local businesses along the trail? Yes.
- Do we have municipal support? Yes.
- Can we afford this project? Yes.
- Will this CPA allocation make our grant application stronger? Yes.
- How should we vote on Article 24? Yes!