

# Hanover Branch Rail Trail

West Hanover

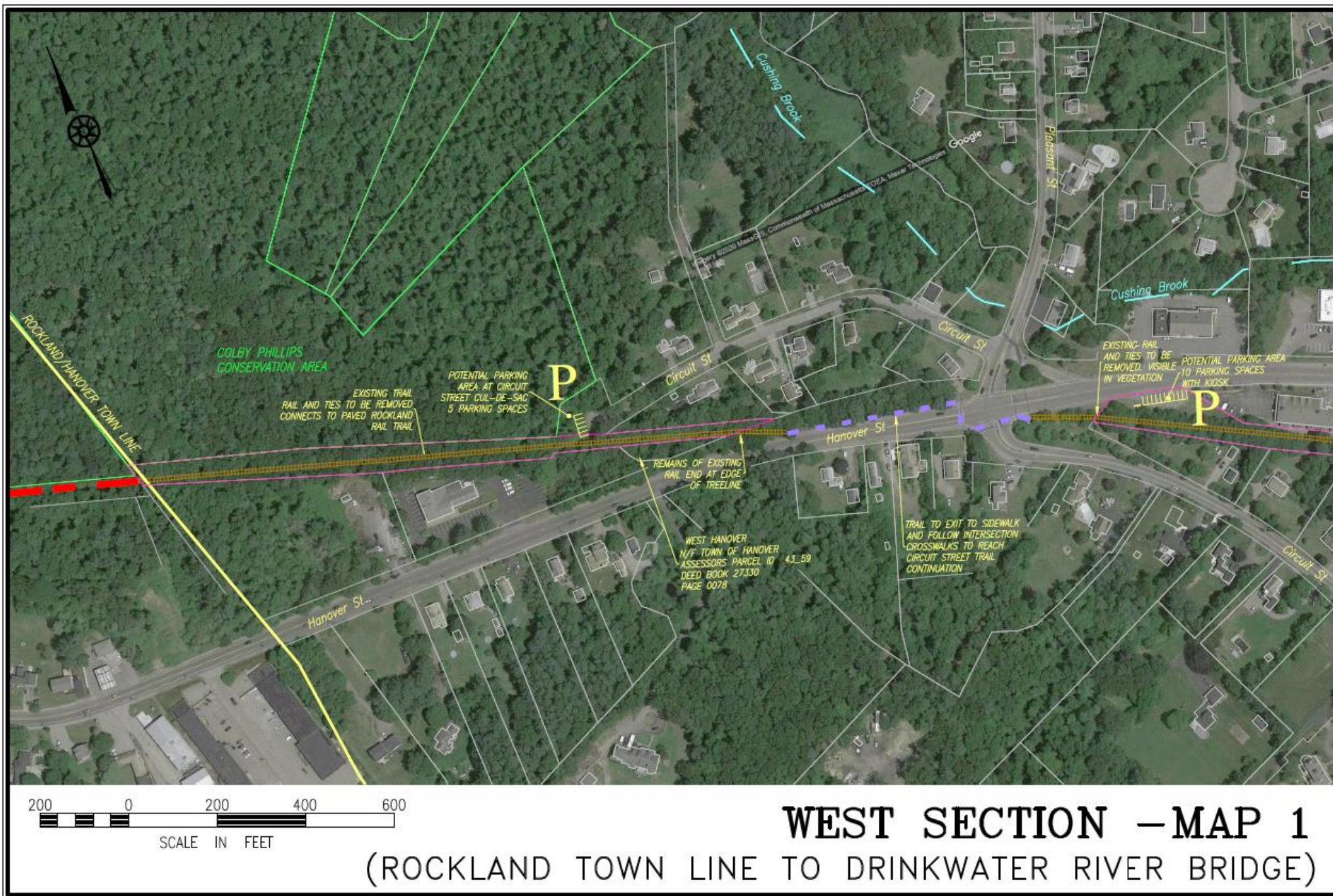
# What is a Rail Trail?

- Recreational path that re-uses an old rail bed
- Access deep into nature on a smooth flat surface
- Handicap accessible
- Perfect for cycling
- Safe place for runners
- Quiet pathway to go for a walk
- Connects different parts of town
- Like a sidewalk without the cars

# Where is the proposed project?

- This project is on the rail bed north of Hanover Street
- Connects Hanover to the Hanover Branch Rail Trail
- Begins at the Rockland Town Line
- This section ends at Route 139 in West Hanover Square
- Will connect to DOT designed improvements at Route 139
- Has existing trail connections to the Colby-Phillips Trails
- Will be accessible from new parking spots
- Connects Hanover Branch Rail Trail to West Hanover Square





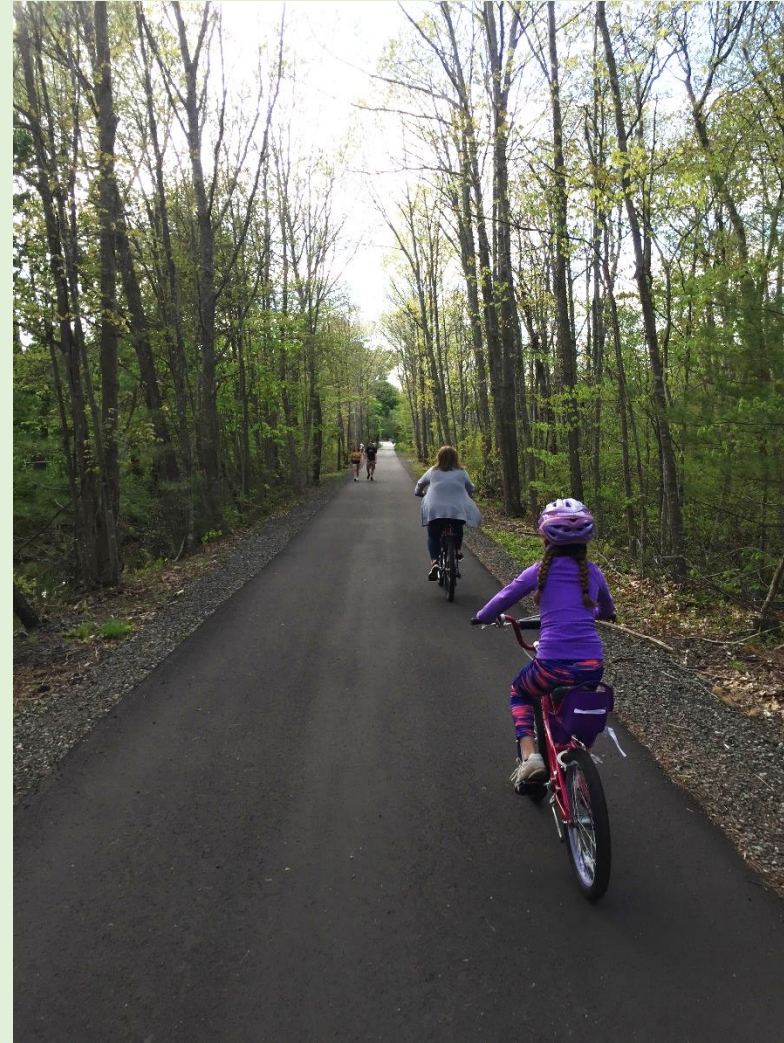


# What's the big idea?

**Before**



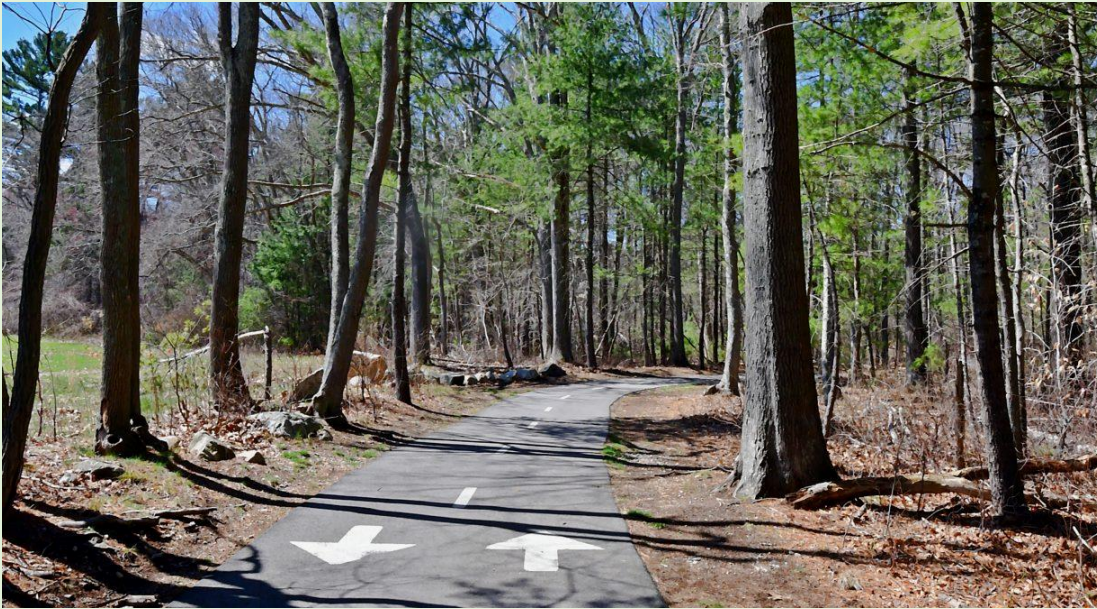
**After**



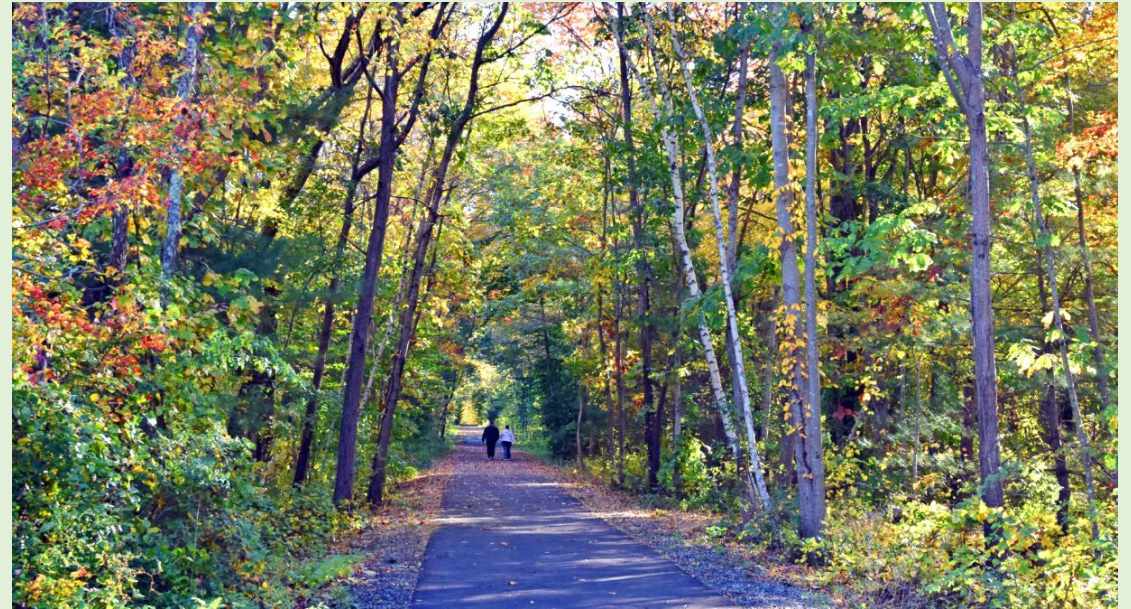


# Who has trails like this?

**Norwell – Norwell Pathway**



**Rockland – Hanover Branch Rail Trail**





# Who else has trails like this?

**Cape Cod - Cape Cod Rail Trail**



**Plymouth – North Plymouth Rail Trail**





# Recreation for all seasons.



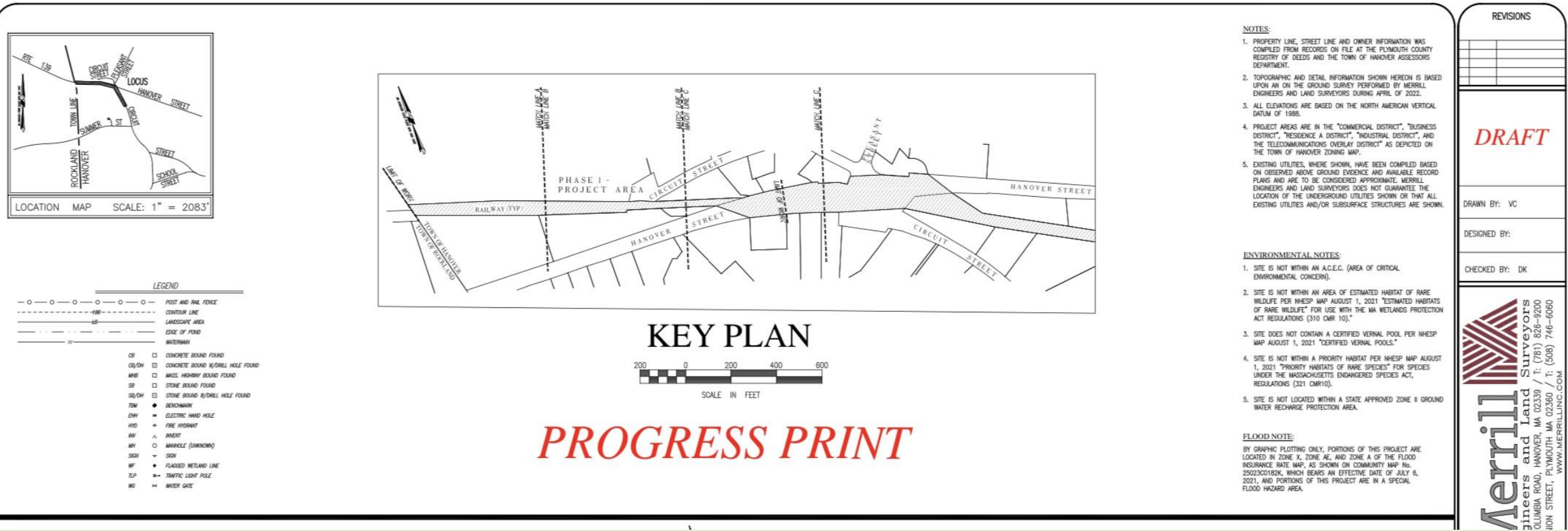


Summer shade, and footprints in the snow.





# West Hanover - Draft Site Plan



PROGRESS PRINT



# West Hanover - Draft Site Plan

PROGRESS PRINT

**Merrill**  
Engineers and  
Land  
427 COLUMBIA ROAD, HANOVER, MA 023  
26 UNION STREET, PLYMOUTH MA 0236  
WWW.MERRILLINC.COM

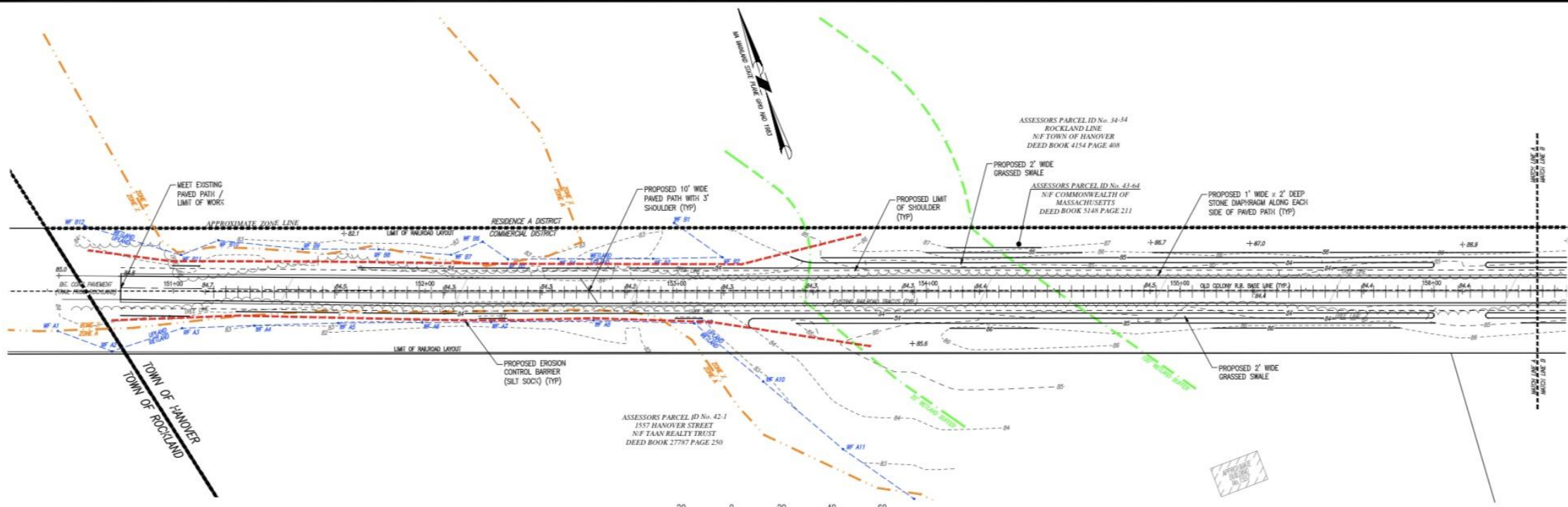
**SITE PLAN**  
HANOVER RAILS TO TRAILS  
HANOVER, MASSACHUSETTS

OWNER/APPLICANT  
CLIENT NAME  
STREET ADDRESS  
TOWN NAME, MA ZIP CODE  
MAY 2, 2022  
SCALE: 1"=20'  
JOB NO. 20-055  
LATEST REVISION:

- BM BENCHMARK
- DWH ELECTRIC HAND HOLE
- HYD FIRE HYDRANT
- INVERT
- MANHOLE (UNKNOWN)
- SDH SIGN
- WF FLOODING WETLAND LINE
- TLP TRAFFIC LIGHT POLE
- WG WATER GATE

3. THIS SITE IS NOT LOCATED WITHIN A STATE APPROVED ZONE OR VULNERABLE WATER RECHARGE PROTECTION AREA.

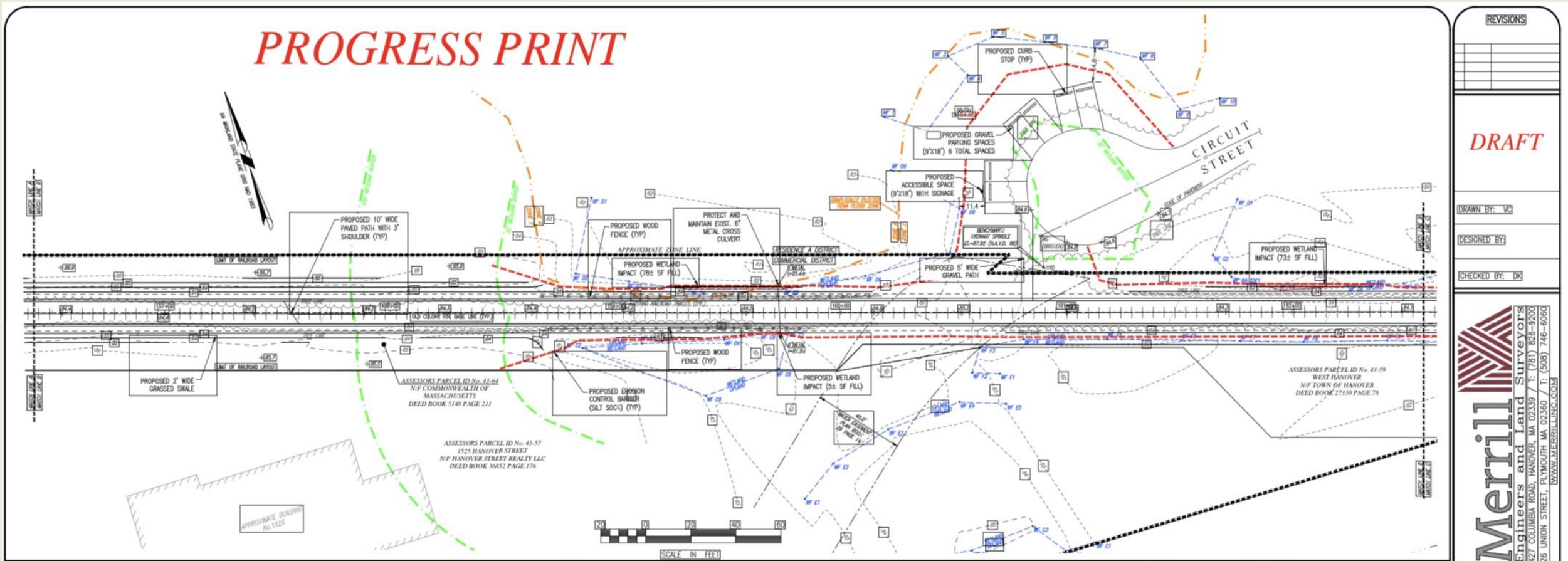
**FLOOD NOTE:**  
BY GRAPHIC PLOTTING ONLY, PORTIONS OF THIS PROJECT ARE LOCATED IN ZONE X, ZONE AE, AND ZONE A OF THE FLOOD INSURANCE RATE MAP, AS SHOWN ON COMMUNITY MAP NO. 25023C0182K, WHICH BEARS AN EFFECTIVE DATE OF JULY 6, 2021, AND PORTIONS OF THIS PROJECT ARE IN A SPECIAL FLOOD HAZARD AREA.



COPYRIGHT © BY MERRILL CORPORATION  
NO PART OF THIS DOCUMENT MAY BE REPRODUCED, STORED IN A RETRIEVAL SYSTEM, OR TRANSMITTED IN ANY FORM OR BY ANY MEANS, ELECTRONIC, MECHANICAL, PHOTOCOPYING, RECORDING, OR OTHERWISE, WITHOUT THE EXPRESS WRITTEN CONSENT OF MERRILL CORPORATION WITH THE EXCEPTION OF ANY REGULATORY AUTHORITY WHICH MAY REPRODUCE IT IN CONNECTION WITH THE PERFORMANCE OF OFFICIAL BUSINESS UNDER ITS JURISDICTION. ANY VIOLATIONS MADE TO THIS DOCUMENT WITHOUT THE EXPRESS WRITTEN CONSENT OF MERRILL CORPORATION SHALL RENDER IT UNLAWFUL.



# West Hanover - Draft Site Plan



REVISIONS	

*DRAFT*

DRAWN BY: VC

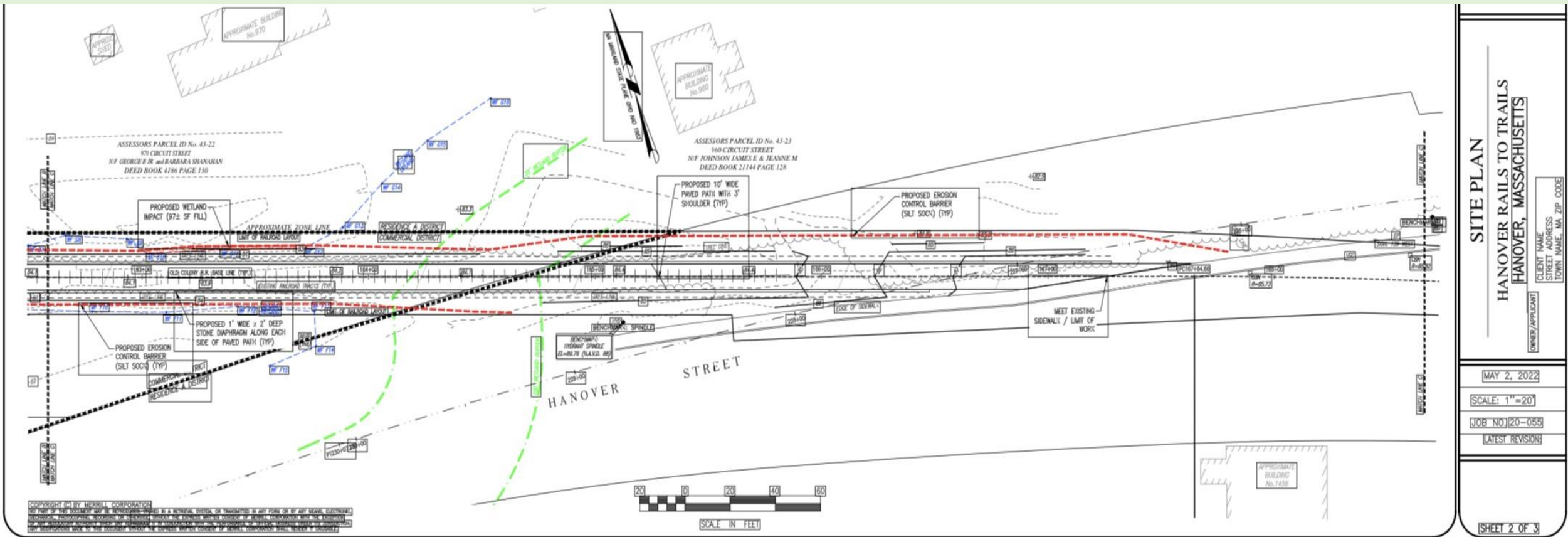
DESIGNED BY:

CHECKED BY: DK

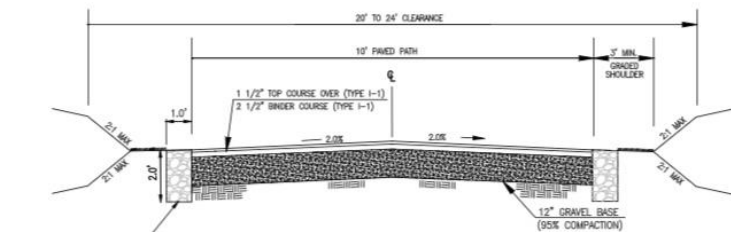




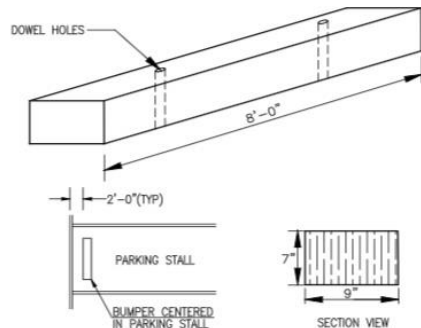
# West Hanover - Draft Site Plan



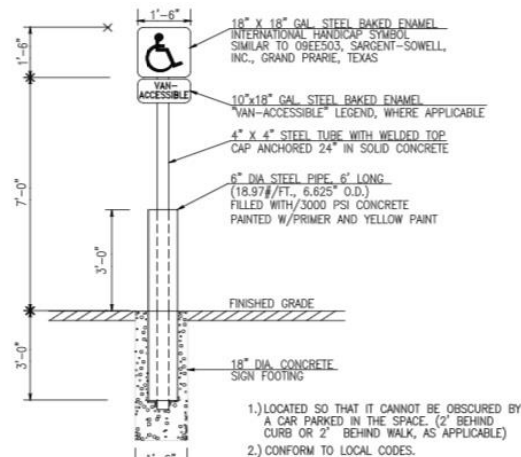
# West Hanover - Draft Site Plan



- TYPICAL CROSS SECTION OF SHARED USE PATH**  
(NOT TO SCALE)
- TYPICAL PATH SECTION NOTES:**
- SUBGRADE SHALL BE CRUSHER RUN GRAVEL, CONSISTING OF INERT MATERIAL THAT IS HARD, DURABLE STONE, AND COURSE SAND, FREE FROM LOAM AND CLAY, SURFACE COATING AND DELETERIOUS MATERIALS. IT SHALL MEET THE FOLLOWING GRADATION:
- | SEIVE | PERCENT PASSING |
|-------|-----------------|
| 3"    | 100             |
| 1.5"  | 70-100          |
| .75"  | 50-85           |
| .425" | 30-60           |
| .250" | 0-12            |
- ALL FINING MATERIAL TO BE BITUMINOUS CONCRETE TYPE 1-1 PER MASS DOT STANDARDS.
  - ALL WORK SHALL BE PERFORMED IN ACCORDANCE WITH HANOVER DPW RULES AND REGULATIONS.

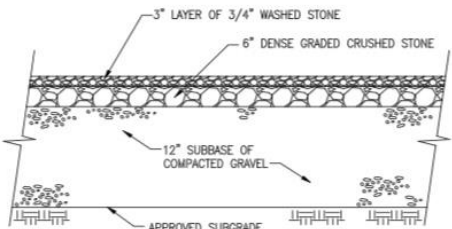


NOTE:



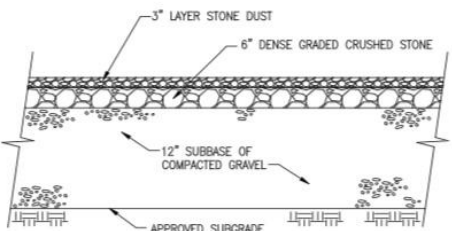
**ACCESSIBLE PARKING SIGN DETAIL**  
(NOT TO SCALE)

## PROGRESS PRINT



- NOTE:**
- ALL UNSUITABLE MATERIAL SHALL BE REMOVED AND REPLACED WITH CLEAN GRAVEL BASE (95% COMPACTION)

**GRAVEL PARKING DETAIL**  
(NOT TO SCALE)



- NOTE:**
- ALL UNSUITABLE MATERIAL SHALL BE REMOVED AND REPLACED WITH CLEAN GRAVEL BASE (95% COMPACTION)

**STONE DUST ACCESSIBLE PARKING DETAIL**

REVISIONS

**DRAFT**

DRAWN BY: VC

DESIGNED BY:

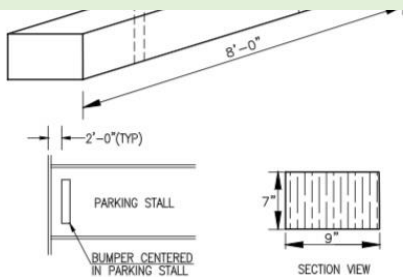
CHECKED BY: DK

**Merrill**  
Engineers and Land Surveyors  
427 COLUMBIA ROAD, HANOVER, MA 02339 / T: (781) 826-9200  
26 UNION STREET, PLYMOUTH MA 02360 / T: (508) 746-6666  
WWW.MERRILLINC.COM

AILS  
ITS

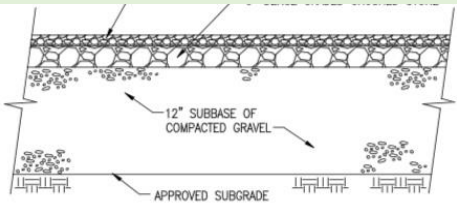


# West Hanover - Draft Site Plan



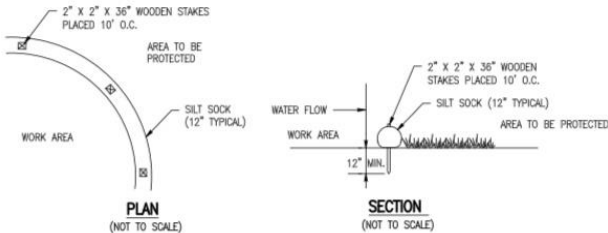
NOTE:  
FOR INSTALLATION OF EACH BUMPER LOG, DRIVE (2) 5/8" DIA x 15" LONG STEEL RODS THROUGH PROVIDED OPENINGS IN BUMPER LOG AND INTO GRAVEL UNTIL FLUSH WITH TOP OF BUMPER LOG (FOR PLACEMENT OF LOG, SEE DIAGRAM ABOVE)

**RAILROAD TIE WHEELSTOP DETAIL**  
(NOT TO SCALE)



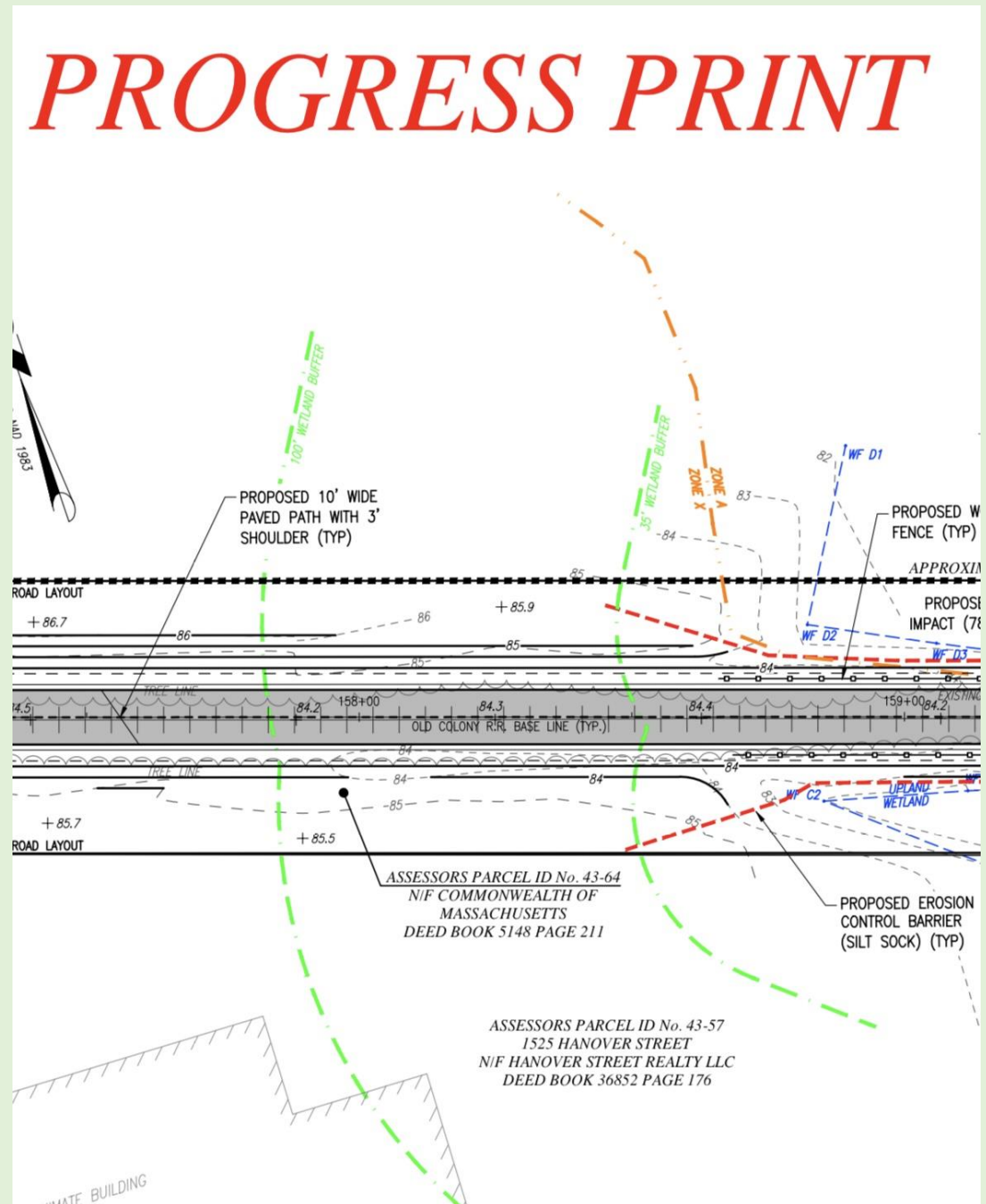
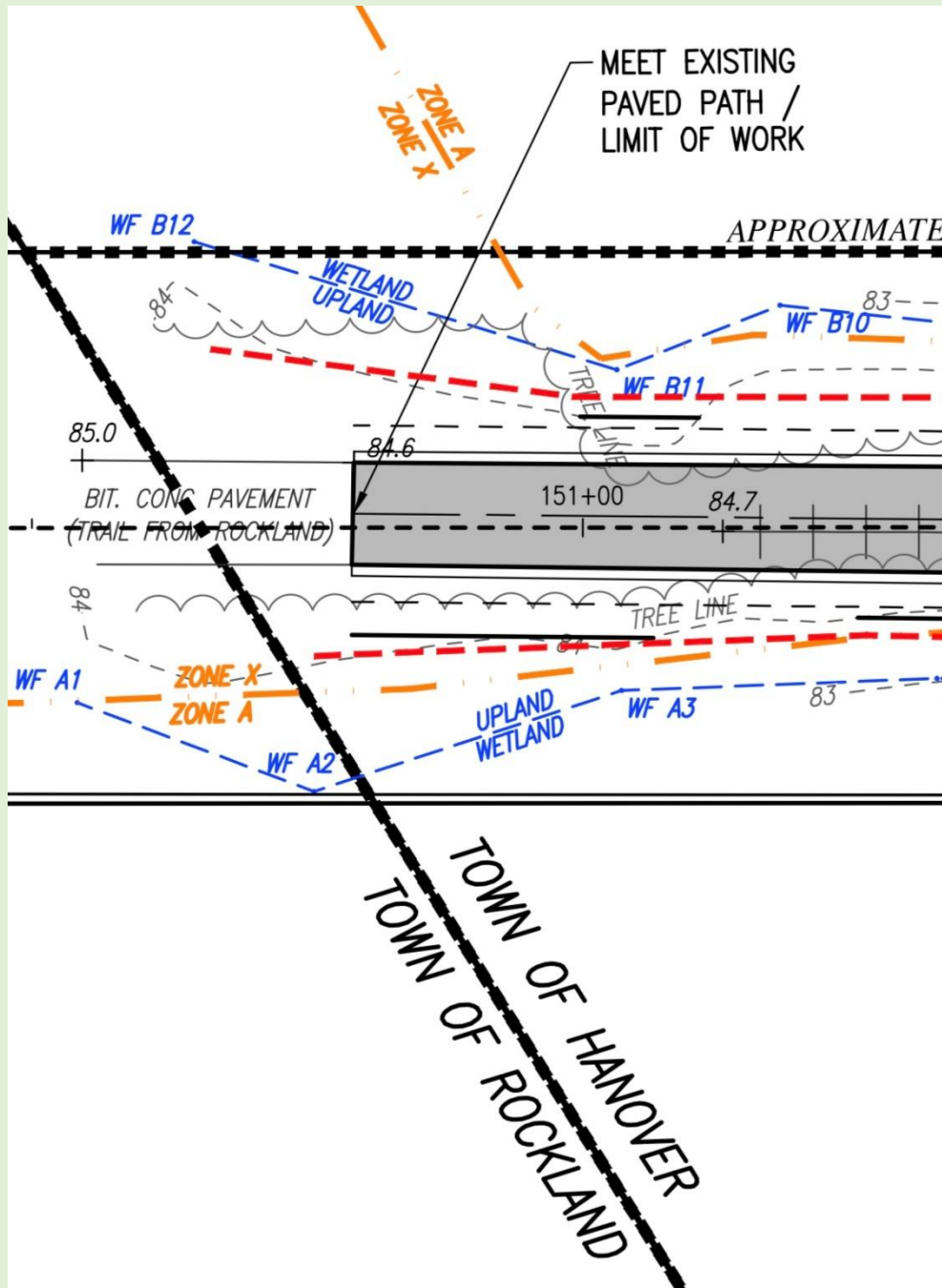
NOTE:  
1. ALL UNSUITABLE MATERIAL SHALL BE REMOVED AND REPLACED WITH CLEAN GRAVEL BASE (95% COMPACTION)

**STONE DUST ACCESSIBLE PARKING DETAIL**  
(NOT TO SCALE)

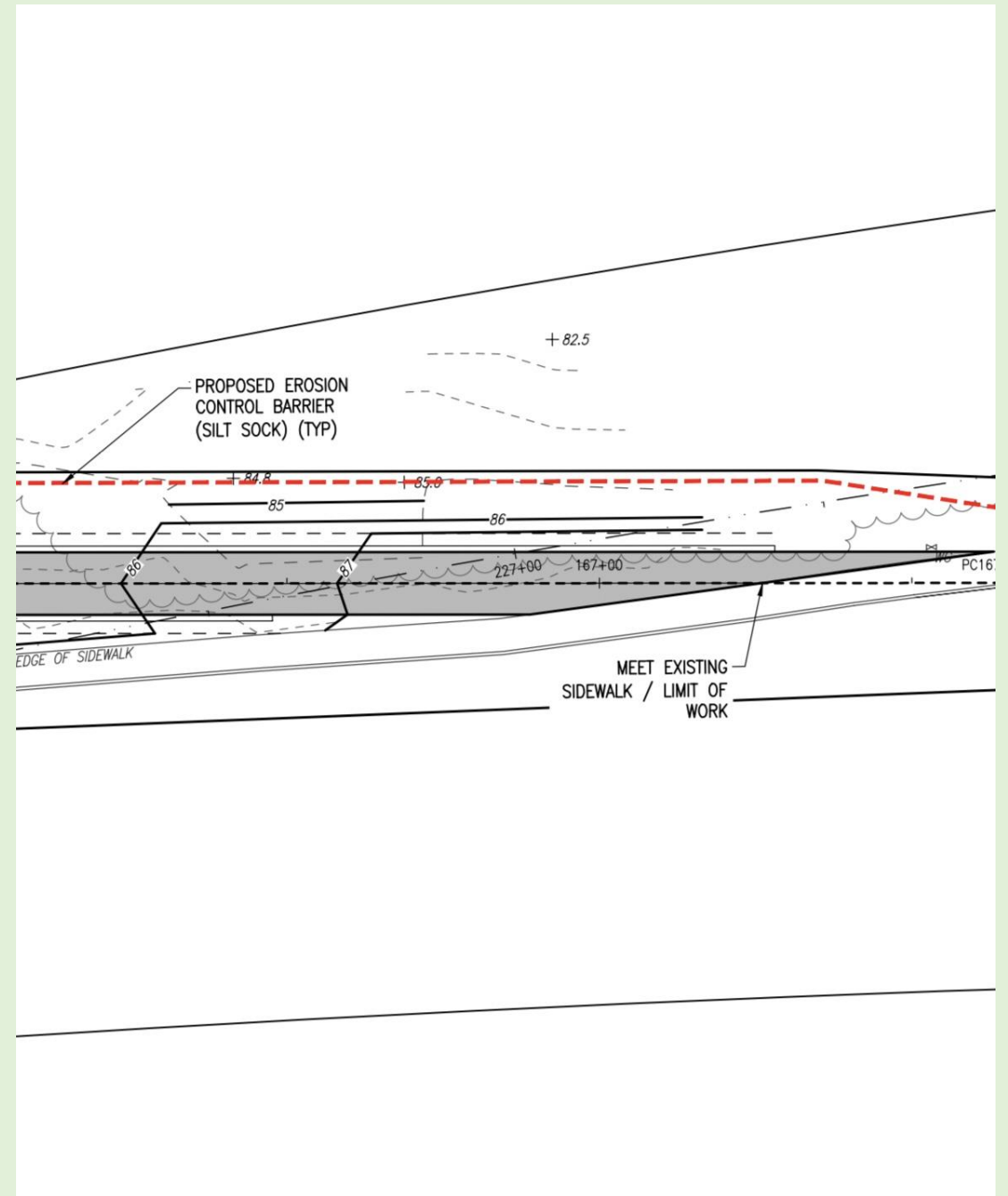
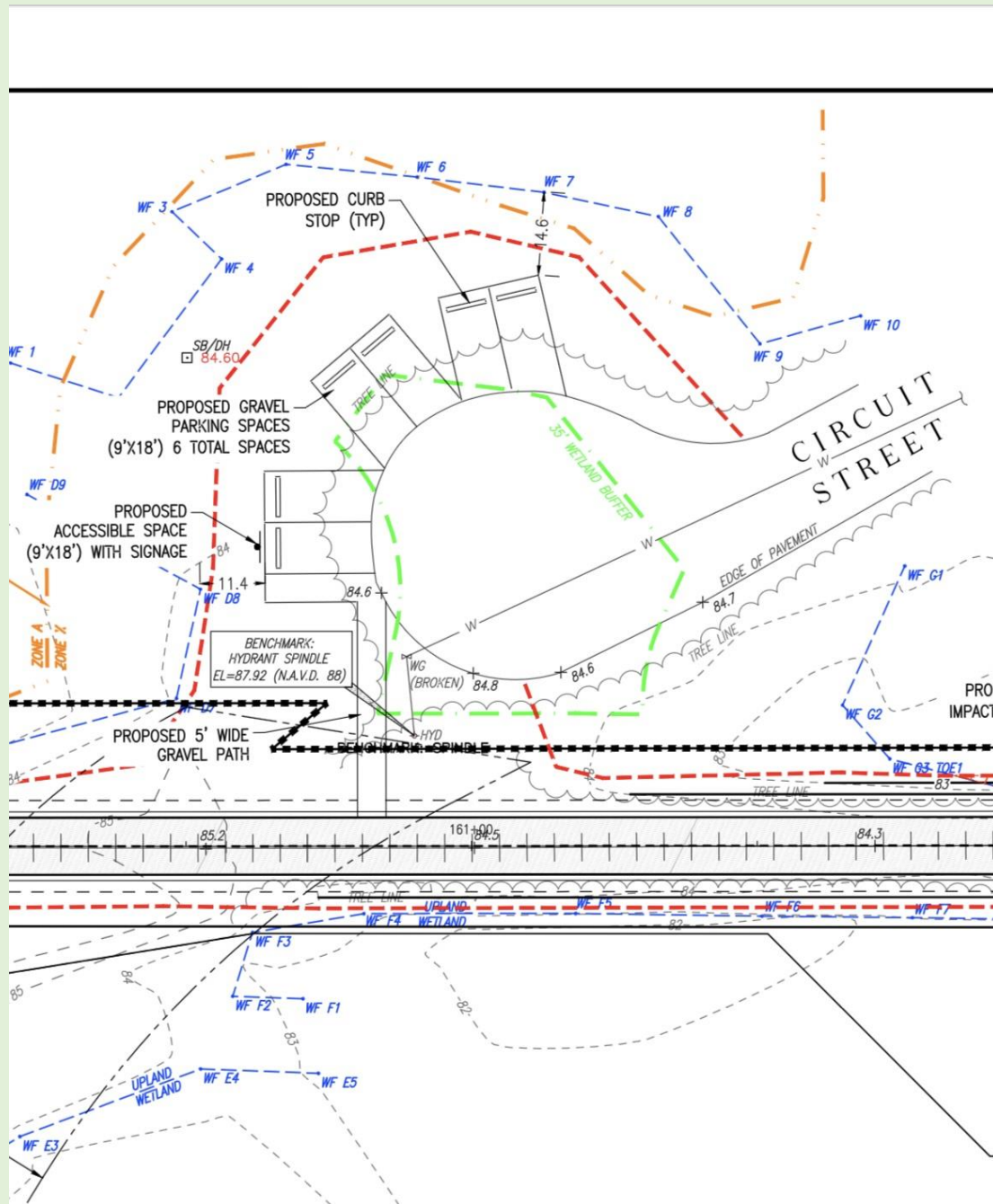


NOTE: REFER TO THE PLAN FOR PROPOSED LOCATION.

**SILT SOCK DETAIL**  
(NOT TO SCALE)







# Thank you for your support and feedback.

2022



2023...

