



# Sylvester Learning Center

Hanover, Massachusetts

## **Vision:**

**Strengthen Hanover's commitment to life long learning through programming and resources made available by repurposing the historic Sylvester School into a contemporary educational center and headquarters for the Hanover Public School System**





# Sylvester Learning Center

Hanover, Massachusetts

## Opportunities:

- Headquarters for HPS Administration
- Headquarters for Town Wide Technology
- Headquarters for Town Wide Payroll/Benefits
- Headquarters for Office of Family and Community Engagement (FACE)
- Classrooms and Training Center for Adult Learning and Higher Educational Courses
- Classrooms for Specialized Education Services and programs





# **Sylvester Learning Center**

**Hanover, Massachusetts**

**Headquarters for HPS Administration, Technology Department, and Payroll Benefits Office:**

- **Professional and sufficient office space to meet and sustain the needs of HPS Central Administration and Town Wide Service teams.**
- **Central location in Hanover for better access for technology staff to town and school buildings.**
- **More convenient location for all school/municipal employees to access Payroll/Benefits Office.**

# ROOM LEGEND

- |                         |                                 |
|-------------------------|---------------------------------|
| 1. CLASSROOM            | 11. BOILER                      |
| 2. AUDITORIUM/GYMNASIUM | 26. STORAGE                     |
| 3. TOILET               | 27. CLOSET                      |
| 4. STAFF ENTRY          | 28. UNIFORMS                    |
| 5. BPS / RESOURCE ROOM  | 29. STAFF BREAK ROOM            |
| 6. SPED LANGUAGE ROOM   | 30. PAINT                       |
| 7. OFFICE               | 31. SERVER ROOM                 |
| 8. PRINCIPAL'S OFFICE   | 32. COMPUTER LAB                |
| 9. HEALTH               | 33. CUSTODIAN'S CLOSET          |
| 10. SECRETARY           | 34. CUSTODIAN'S STORAGE         |
| 11. ENTRY               | 35. CLOSET                      |
| 12. STAGE               | 36. CORPUSCULUM ROOM            |
| 13. SUNDAY CLASSROOM    | 37. CORPUSCULUM ROOM            |
| 14. MUSIC ROOM          | 38. LITERACY ROOM               |
| 15. MEETING ROOM        | 39. UTILITY ROOM w/ ROOF ACCESS |
| 16. CAFETERIA           |                                 |
| 17. KITCHEN             |                                 |
| 18. PAN ROOM            |                                 |

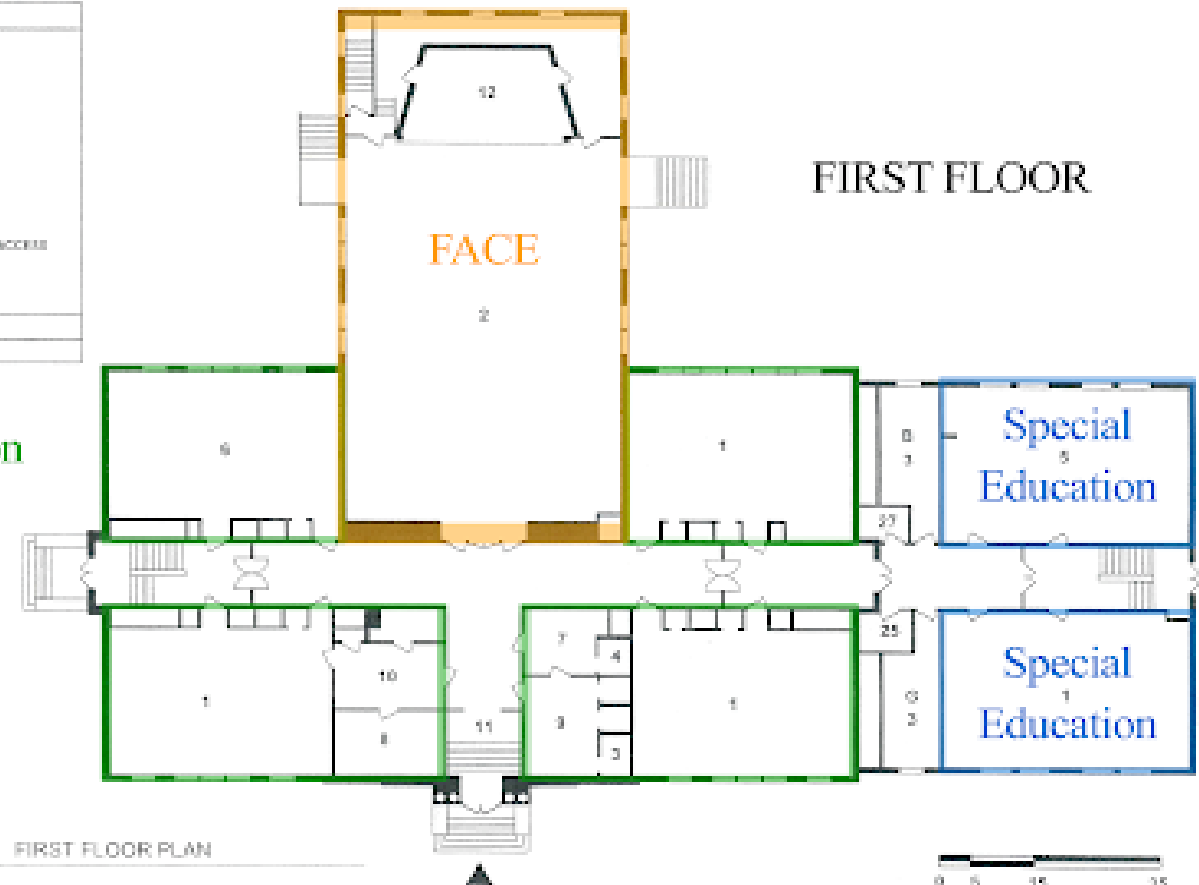
## GRAPHIC LEGEND

- ▲ - MAIN ENTRY LOCATION

School Administration

Technology and  
Payroll / Benefits

FIRST FLOOR



D·R·A

Drumey  
Rosane  
Anderson  
Inc.

Architecture  
Interior Design

Calley Hall  
141 Merrick Road  
Haverhill, MA  
02445

607-964-1700  
607-965-9554 fax

SYLVESTER SCHOOL  
TOWN BUILDING STUDY  
Hanover, Massachusetts

Scale: SEE BAR SCALE

Drawn by: MJQ

Job#: 09017.00





# Sylvester Learning Center

Hanover, Massachusetts

## Headquarters for Office of Family and Community Engagement:

- Professional and sufficient office space for FACE Administration and staff.
- Classroom and recreation space for programs and community events.
- Professional space and central location for retail School Store and back-room store operations.

# ROOM LEGEND

- |                         |                                 |
|-------------------------|---------------------------------|
| 1. CLASSROOM            | 19. BOILER                      |
| 2. AUDITORIUM/GYMNASIUM | 20. STORAGE                     |
| 3. TOILET               | 21. WARDROBE                    |
| 4. STAFF TOILET         | 22. UNLOCKED/STAGE              |
| 5. STED (RESOURCE) ROOM | 23. STAFF BREAK ROOM            |
| 6. SPED LANGUAGE ROOM   | 24. PANTRY                      |
| 7. OFFICE               | 25. SERVER ROOM                 |
| 8. PRINCIPAL'S OFFICE   | 26. COMPUTER LAB                |
| 9. HEALTH               | 27. CUSTODIAN'S CLOSET          |
| 10. SECRETARY           | 28. CUSTODIAN'S STORAGE         |
| 11. ENTRY               | 29. CLOSET                      |
| 12. STAGE               | 30. GYMNASIUM ROOM              |
| 13. GYMNASIUM CLASSROOM | 31. DRESSING ROOM               |
| 14. MUSIC ROOM          | 32. UTILITY ROOM                |
| 15. RESTROOM ROOM       | 33. UTILITY ROOM W/ ROOF ACCESS |
| 16. CAFETERIA           |                                 |
| 17. KITCHEN             |                                 |
| 18. HALL ROOM           |                                 |

## GRAPHIC LEGEND

- MAIN ENTRY LOCATION

FACE

BASEMENT

BASEMENT FLOOR PLAN

0 5 10 20

D·R·A

Drumery  
Rosane  
Anderson  
Inc.

Architecture  
Interior Design

Colby Hall  
1411 Hancock Road  
Newton Centre, MA  
02459

617-554-0300  
617-559-9054 fax

SYLVESTER SCHOOL  
TOWN BUILDING STUDY  
Hanover, Massachusetts

Scale: SEE BAR SCALE

Drawn by: E.J.L.

Job# 00017.00





# Sylvester Learning Center

Hanover, Massachusetts

**Classrooms and Training Center for Adult Learning and Higher Educational Courses:**

- Contemporary classroom space in a historic schoolhouse setting.
- Classrooms available for local colleges, universities, and training programs for adult learners.
- Classroom and meeting space for local civic and non-profit organizations.
- Classrooms to support future HPS needs for specialized spaces: virtual learning labs, transitional support environment for students, and testing center.





# Sylvester Learning Center

Hanover, Massachusetts

**Classrooms and resources for Special Education  
Services and programs:**

- Proximity to Center School is an asset for local Special Education Collaboratives to rent space for their specialized programs.
- Creates opportunities to build specialized programs with local school districts to support specific needs that we currently outsource.
- Creates opportunities for partnerships with established private schools servicing our students outside of Hanover.



# ROOM LEGEND

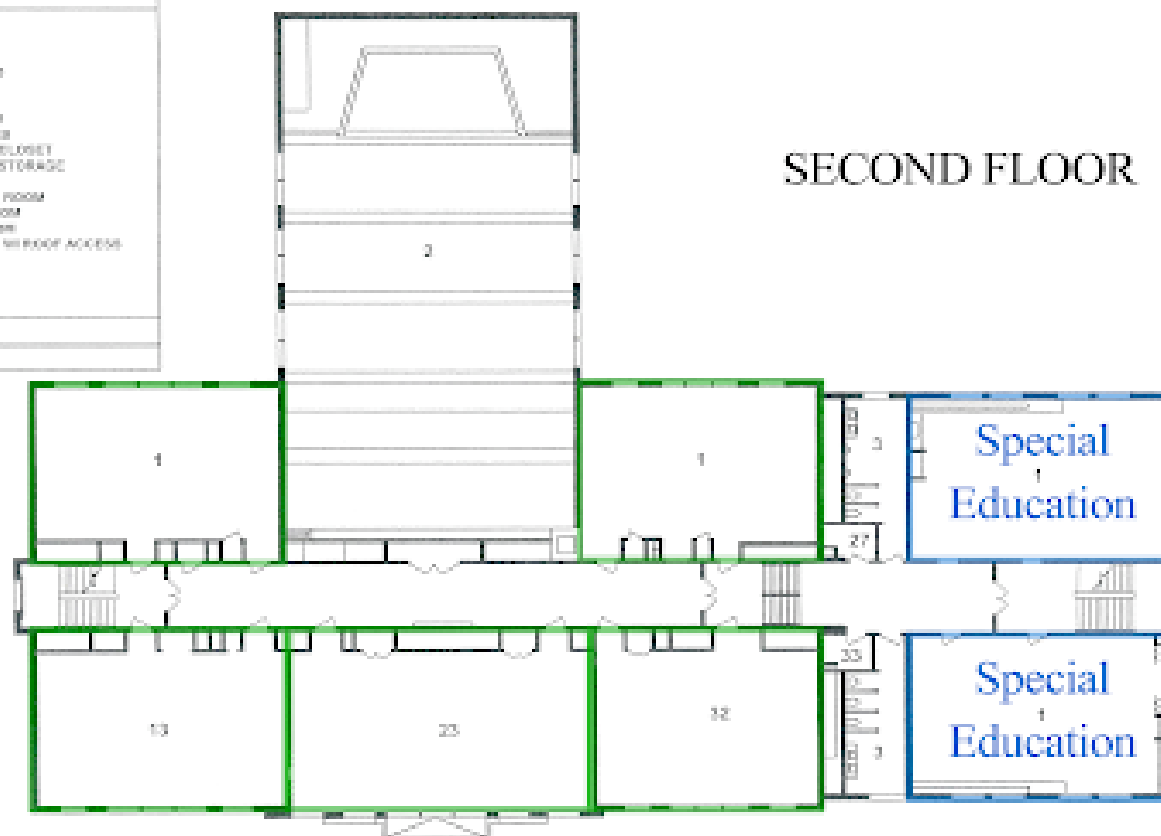
- |                          |                                 |
|--------------------------|---------------------------------|
| 1. CLASSROOM             | 19. BOILER                      |
| 2. REPTOR/MOVIE/VIDEO    | 20. STORAGE                     |
| 3. TOILET                | 21. OFFICE                      |
| 4. STAFF TOILET          | 22. OFFICE/ARTS                 |
| 5. SPECIAL RESOURCE ROOM | 23. LIBRARY                     |
| 6. SPECIAL LANGUAGE ROOM | 24. PANTRY                      |
| 7. OFFICE                | 25. SERVER ROOM                 |
| 8. PRINCIPAL'S OFFICE    | 26. COMPUTER LAB                |
| 9. HEALTH                | 27. CUSTODIAN'S CLOSET          |
| 10. SECRETARY            | 28. CUSTODIAN'S STORAGE         |
| 11. ENTRY                | 29. CLOSET                      |
| 12. STAGE                | 30. COMPRESSOR ROOM             |
| 13. BOWING CLASSROOM     | 31. DISHWASH ROOM               |
| 14. MUSIC ROOM           | 32. UTILITY ROOM                |
| 15. MEETING ROOM         | 33. UTILITY ROOM W/ ROOF ACCESS |
| 16. CAFETERIA            |                                 |
| 17. KITCHEN              |                                 |
| 18. PAID ROOM            |                                 |

## GRAPHIC LEGEND

■ - MAIN ENTRY LOCATION

## SECOND FLOOR

Adult  
Learning  
Classrooms



SECOND FLOOR PLAN

0 5 15 30

D·R·A

Drumrey  
Rocane  
Anderson  
Inc.

Architecture  
Interior Design

Colby Hall  
141 Hancock Road  
Newton Centre, MA  
02459

617-554-0700  
617-554-9004 fax

## SYLVESTER SCHOOL TOWN BUILDING STUDY Hanover, Massachusetts

Scale: SEE BAR SCALE

Drawn by: E.J.L.

Job#: 09017.00



# Sylvester Learning Center

Hanover, Massachusetts

## Next Steps:

- Establish a timeline and project benchmarks.
- Evaluate costs for Sylvester upgrades and build out to meet ADA compliance and building code requirements.
- Determine financing options and revenue sources.
- Design space to meet the needs of the HPS Administration to support the vision of a comprehensive learning center.
- Develop a business plan intended to create a sustainable/cost neutral learning center.